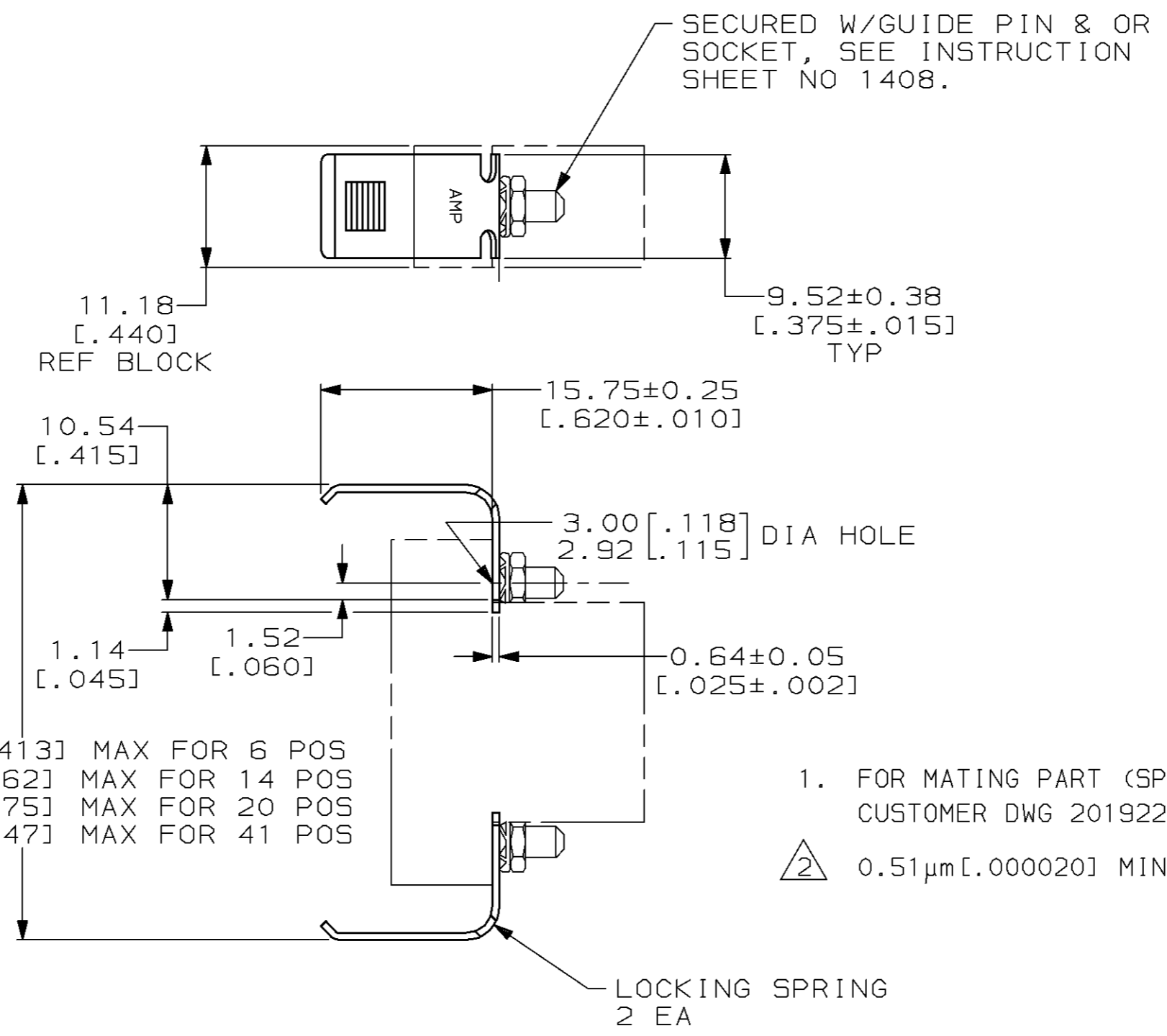


THIS DRAWING IS UNPUBLISHED. RELEASED FOR PUBLICATION ,19 .
 © COPYRIGHT 19 BY AMP INCORPORATED. ALL RIGHTS RESERVED.

LOC	DIST	REVISIONS			
P	LTR	DESCRIPTION	DATE	DWN	APVD
BD	36				
		K REDRAWN PER EC 0020-1245-95	08 NOV 95	-	-



- FOR MATING PART (SPRING CATCH) SEE CUSTOMER DWG 201922.
- 0.51µm [.000020] MIN NICKEL OVER COPPER FLASH.

THIS DRAWING IS A CONTROLLED DOCUMENT FOR AMP INCORPORATED. IT IS SUBJECT TO CHANGE AND THE CONTROLLING ENGINEERING ORGANIZATION SHOULD BE CONTACTED FOR THE LATEST REVISION.		DWN C. REIFSNYDER 08 NOV 95	AMP Incorporated Harrisburg, PA 17105-3608													
DIMENSIONS: mm [INCHES]		CHK R. STONE 17 NOV 95	NAME LOCKING SPRING KIT, UNASSEMBLED, FOR 6, 14, 20 & 41 POS BLOCKS, M SERIES													
TOLERANCES UNLESS OTHERWISE SPECIFIED:		APVD G. STEINHAUER 19 NOV 95														
<table border="0"> <tr><td>0 PLC</td><td>±-</td></tr> <tr><td>1 PLC</td><td>±-</td></tr> <tr><td>2 PLC</td><td>±0.13 [.005]</td></tr> <tr><td>3 PLC</td><td>±-</td></tr> <tr><td>4 PLC</td><td>±-</td></tr> <tr><td>ANGLES</td><td>±-</td></tr> </table>		0 PLC	±-	1 PLC	±-	2 PLC	±0.13 [.005]	3 PLC	±-	4 PLC	±-	ANGLES	±-	PRODUCT SPEC -	SIZE A3	CAGE CODE 00779
0 PLC	±-															
1 PLC	±-															
2 PLC	±0.13 [.005]															
3 PLC	±-															
4 PLC	±-															
ANGLES	±-															
MATERIAL CARBON STEEL		APPLICATION SPEC -	DRAWING NO C-201921	SCALE 2:1												
FINISH △		WEIGHT -	SHEET 1 OF 1	REV K												
CUSTOMER DRAWING																