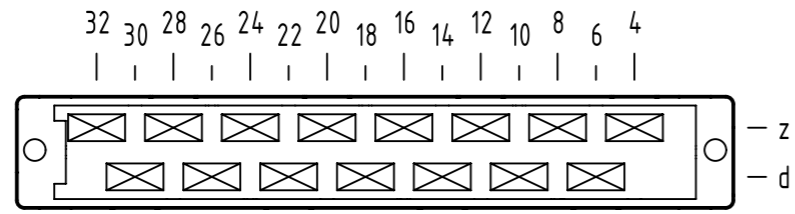


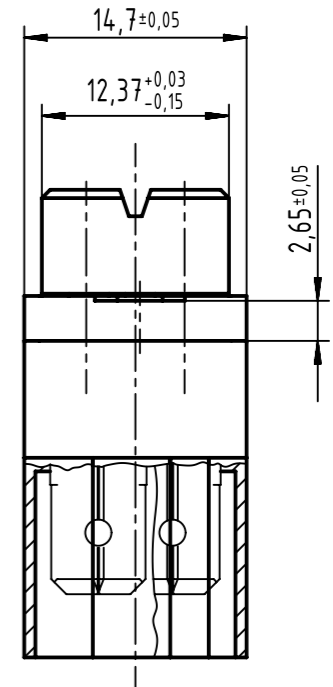
**A**  
contact arrangement



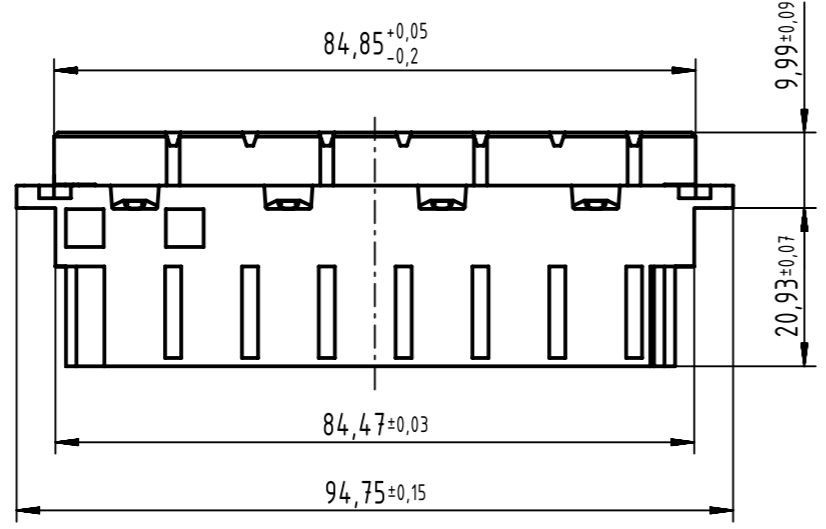
15 contacts

- = position with contact
- = position without contact

**B (2:1)**

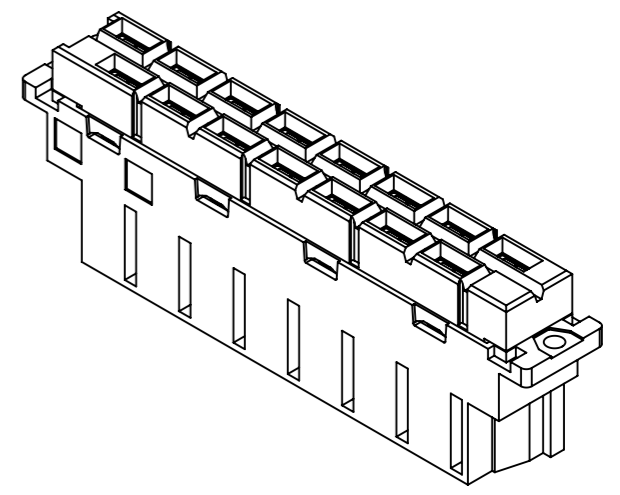
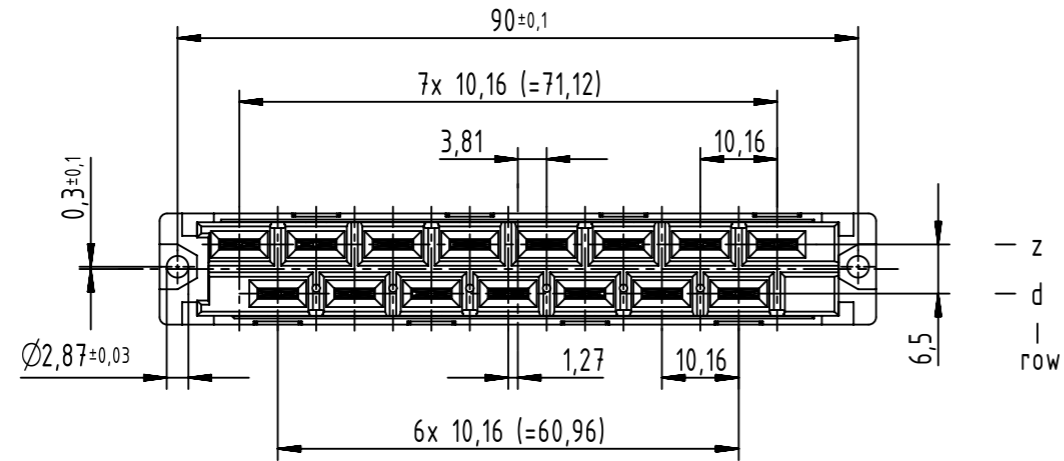


**A**



**B**

32 4 — position



contact surface Ag

	All rights reserved	Created by STORCK	Inspected by TADJE	Standardisation HOFFMANN	Date 2018-10-24	State Final Release
	Department EL PD	Title DIN Power type H15 female faston across			Doc-Key / ECM-Nr. 100142023/UGD/005/B 500000141618	
HARTING Electronics GmbH D-32339 Espelkamp		Type TB	Number 09062152811		Rev. B	Page 1/1