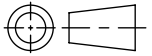


SW2014



SUPERSEDES DWG MT1013002CST, REV 02

Revision level			Revision Record	Changed	Date	Approved	Date
Drawing	State	Part					
00.1	Design Release	-	SEE ECN# 013200	KEP	7/20/2015	KAC	7/20/2015

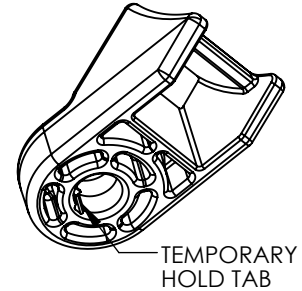
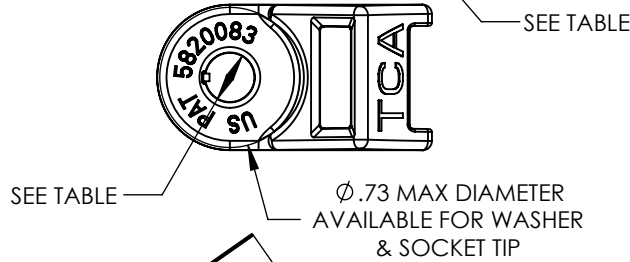
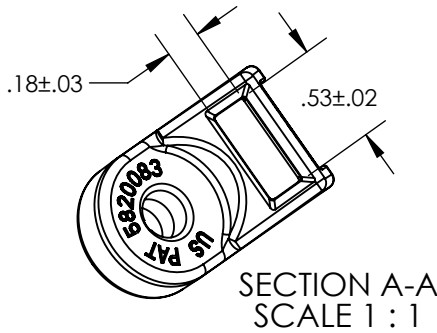
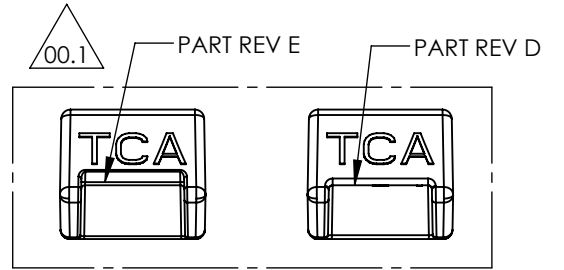
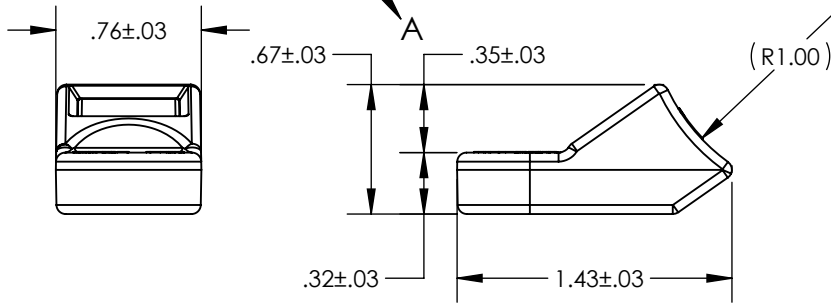
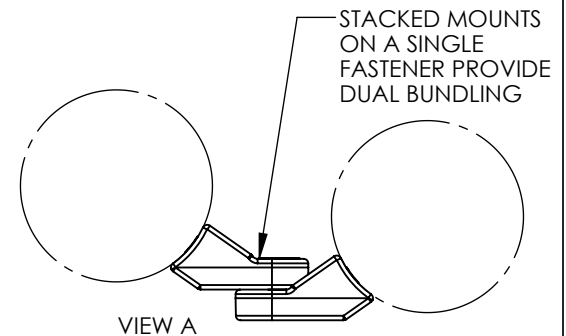
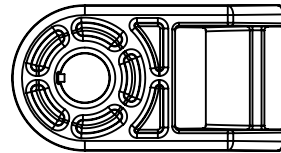


TABLE OF PART NUMBERS		
PART NUMBER	PART REV	HOLE DIA
HDM19	D or E	3/16"
HDM25	D or E	1/4"
HDM312	D or E	5/16"



REFERENCE FEATURES:
 - RUGGED HEAVY DUTY DESIGN & MATERIAL
 - 250 lb ASSEMBLY STRENGTH IN ANY DIRECTION
 - WITHSTANDS 115 in-lb OF TORQUE APPLIED TO 1/4" FASTENER WITH WASHER
 - FASTEN MOUNT WITH STUD, BOLT, SCREW, RIVET, NAIL, ETC...
 - SMALL TAB INSIDE HOLE ENGAGES THREADS TEMPORARILY
 - ACCEPTS MOST STANDARD CABLE TIES UP TO 1/2" WIDE
 - MOUNTS ARE DESIGNED TO BE VERTICALLY STACKED ON A SINGLE FASTENER TO ALLOW DUAL BUNDLING - SEE VIEW A
 - ALSO CHAINING OF MULTIPLE BUNDLES ON A SINGLE MOUNT IS AVAILABLE IF T250 WITH BUCKLE/MOUNT FEATURE IS USED
 - OPTIONAL MOUNTING HOLE DIAMETERS ARE AVAILABLE UP TO 5/16" - CONTACT TYTON FOR SPECIFIC HOLE SIZES & PRICING



Material
PA66HIRHSUV BLACK

Units: inches
 Dimension without tolerances details to:
 .xxxx = ±.0005
 .xxx = ±.005
 .xx = ±.01
 .x = ±.03
 None = ±.06
 < = ±0.5°
 Dimension Formatted in [mm]

The copyright of this drawing is reserved by HellermannTyton. It is issued on condition that it is not reproduced, copied, or disclosed to a third party, either wholly or in part, without the consent of HellermannTyton.

Drawn	KEP	7/20/2015
Approved	KAC	7/20/2015
HellermannTyton		
North America Email: corp@htamericas.com Web: www.hellermann.tyton.com		

Article/Type-No	SEE TABLE
Title	HEAVY-DUTY CABLE TIE MOUNT WITH MOUNTING HOLE
Drawing-No	15-0351-001-CSU
PRODUCTION : Phase	

Scale	1:1
Project Number	PRP 15-0351
Format	AH
Sheet	1/1