

# I.280 | Cylindrical handles

Duroplast

INCH



PF



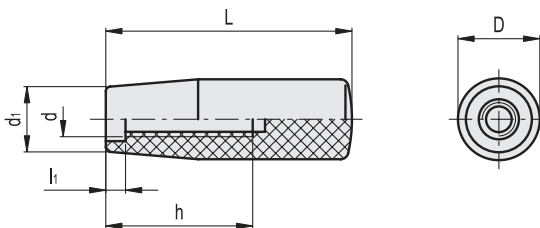
- 1
- 2
- 3
- 4
- 5
- 6
- 7
- 8
- 9
- 10
- 11
- 12
- 13
- 14
- 15
- 16
- 17
- 18

## MATERIAL

Phenolic based (PF) Duroplast, black colour, glossy finish.

## STANDARD EXECUTION

Threaded blind hole.



INCH

| Code   | Description      | D    | L    | d       | d1   | h    | l1   |      |
|--------|------------------|------|------|---------|------|------|------|------|
| 921601 | I.280/40-1/4-20  | 0.71 | 1.57 | 1/4-20  | 0.59 | 0.98 | 0.14 | 0.03 |
| 921702 | I.280/50-5/16-18 | 0.83 | 1.97 | 5/16-18 | 0.67 | 1.38 | 0.3  | 0.04 |
| 921802 | I.280/65-3/8-16  | 0.91 | 2.56 | 3/8-16  | 0.75 | 1.57 | 0.3  | 0.07 |
| 921901 | I.280/80-3/8-16  | 1.02 | 3.15 | 3/8-16  | 0.83 | 2.17 | 0.28 | 0.1  |
| 922002 | I.280/90-1/2-13  | 1.1  | 3.54 | 1/2-13  | 0.87 | 2.28 | 0.31 | 0.14 |

Fixed & Revolving handles