

General Accessories

M8 IP69K Connector Cables

Type CONB54-..W

CARLO GAVAZZI



- IP69K version
- Straight or 90° connector
- M8 version
- 4-wire
- Good resistance against chemicals
- High temperature - up to 105°C (UL 90°C)
- UL and ECOLAB approved

Product Description

Highly robust IP69K connection cables for harsh environments. Especially suitable for use in washdown industries such as food & beverage, chemical and pharmaceutical industries thanks to the high standards of UL and ECOLAB. Featuring UL certified temperatures of up to 90°C, ECOLAB certification and IP69K protection class, the CONB IP69K connectors offer a guaranteed

long term reliability even in the harshest environments. Moreover, the connectors are resistant to aggressive chemicals and cleaning agents adhering to high Ecolab standards which make them very suitable to be used in Food & Beverage industry.

For maximum flexibility, the connectors are available in straight or angled versions in M8 connector, 4 wires.

Ordering Key

CONB54NF-A2W

CONB _____
 5 = M8 DC _____
 4 = 4 wire (BN, BU, BK, WH) _____
 N= Not shielded _____
 F= Female _____
 A = Angled _____
 S = Straight _____
 2 = 2 metres _____
 5 = 5 metres _____
 W = Washdown _____

Type Selection

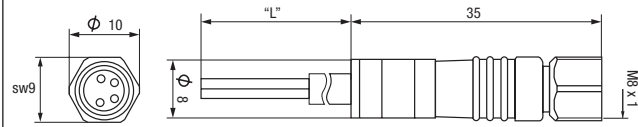
Plug type	Cable length	Ordering number TPE
4-Wire Angled	2 m	CONB54NF-A2W
	5 m	CONB54NF-A5W
4-Wire Straight	2 m	CONB54NF-S2W
	5 m	CONB54NF-S5W

Specifications

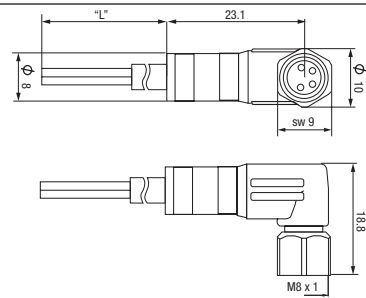
Rated operating voltage (U _B)	30V AC/DC	Tightening torque	0.5 Nm
Output current	≤ 4 A	Connection cable	TPE orange
Contact resistance	≤ 5 mΩ	Wire cross section	4 x 0.25 mm ² (jacket Ø 4.7 mm)
Contact material	Cu/Sn	Weight	approx 54g approx 130g
Coating	Cu/Au	2 m version	
Contact bearer material	PP white	5 m version	
Temperature	-40° to +105°C (90°C UL) -40° to +221°F (194°F UL)	Pollution degree	3
Degree of protection	IP69K	Overvoltage category	III
O-ring sealing	EPDM		
Rated Impulse Voltage	0.8 kV		
Insulation resistance	> 10 ⁹ Ω		
Moulded body material	PP white		
Union Locking nut	V4A		

Dimensions

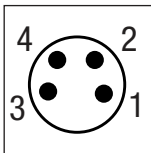
Straight Version



Angled Version



Contact layout



Colour Code

- 1 Brown
- 2 White
- 3 Blue
- 4 Black

Derating Curve (DIN EN 60512-5-2)

