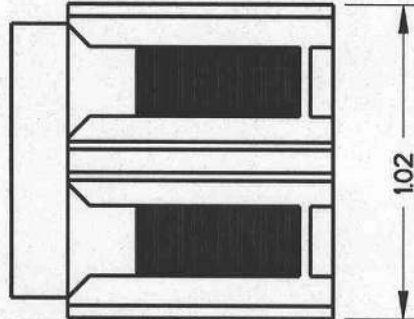
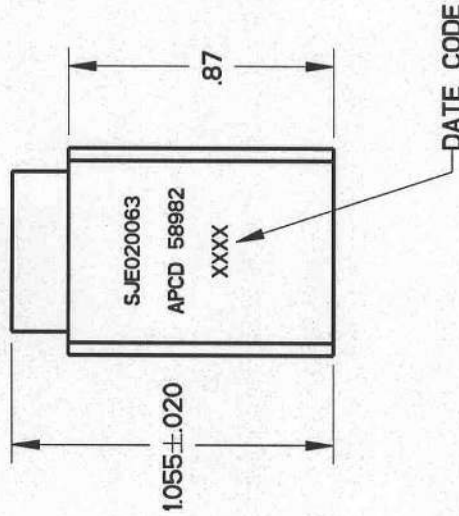
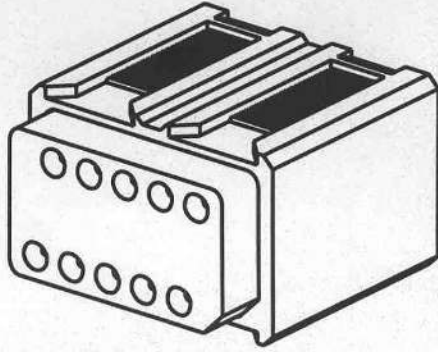
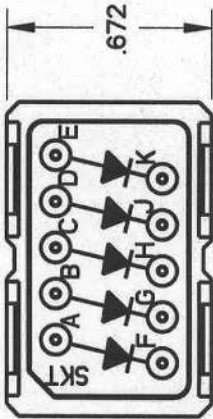


REV	ECN	APPD
1		AD 3/16/09



NOTES:

1. **MATERIALS:**
 BODY: POLYETHERIMIDE PER ASTM-D5205
 GROMMET: SILICONE BLEND ELASTOMER.
 DIODE: JANTXIN3613, QTY: 5.
 INTERNAL PIN CONTACT:
 COPPER ALLOY, HARD GOLD PLATE PER MIL-DTL-45204.
 PERFORMANCE SPECIFICATION PER MIL-T-81714.
 (SUBJECT TO LIMITATIONS OF THE ELECTRONIC COMPONENTS)
 TEMPERATURE: -65°C TO 200°C.
 INSULATION RESISTANCE: 5000 MEGOHMS MIN AT 25°C.
 DIELECTRIC WITHSTANDING VOLTAGE:
 1500 VRMS AT SEA LEVEL,
 AND 200 VRMS AT 100,000 FT. ALTITUDE.
 CURRENT RATING: 7.5A FOR SIZE 20 CONTACTS.
 VIBRATION AND SHOCK: PER MIL-T-81714 PARA 3.5.8 & 9.
 MODULE ACCEPTS SOCKET CONTACTS (10) M39029/22-192.
2. MODULE TO BE MOUNTED ON M81714/67 RAIL SYSTEM.
- 3.
- 4.

TITLE		SJE		REV
Amphenol Pcd		ELECTRONIC MODULE		1
SPECIFICATION DRAWING		JANTXIN3613		
ENGR	J. ADAMS	DATE	03/16/09	
CHKD		SCALE	NONE	SHEET 1 OF 1
APPD		CODE	58982	
		SIZE	A	
		DWG NO.	SJE020063_C	
		DATE	3/16/09	
DIMENSIONS	TOLERANCES	PROJECTION	THIS DOCUMENT CONTAINS PROPRIETARY INFORMATION WHICH IS THE CONFIDENTIAL PROPERTY OF AMPHENOL PCD BEVERLY, MA, USA	
ANSI Y14.5M	XX ±0.01			
UNITS: INCHES	XXX ±0.005			
Pro/E FILE	ANGLES ±1.0°			
ORIGINAL				