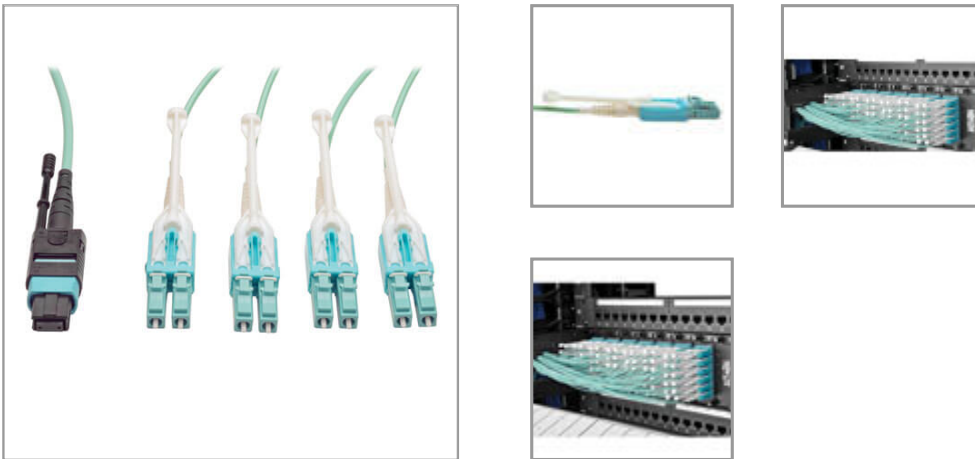


Important Note

OM3 can support 40GBASE-SR4 / 100GBASE-SR10 in applicable parallel optics networks.

MTP/MPO Fan-out Cable with Push/Pull Tab Connectors, MTP/MPO to 4xLC, 40GbE, 40GBASE-SR4, OM3 Plenum-rated - Aqua, 3M (9.84 ft.)

MODEL NUMBER: **N844-03M-8LC-PT**



Highlights

- MTP / MPO to 8 x LC Fan-out Cable
- Push/Pull tab connectors offer maximum accessibility in high density installations; install / remove with one hand without needing additional tools
- Slim uniboot design saves space and makes cables easier to manage
- Premium-grade ceramic ferrule designed specifically for 10GbE and faster applications
- Sturdy plastic housing for long-lasting durability
- OM3, 40GbE rated, 40GBASE-SR4
- Backward compatible with existing 50/125 fiber
- Plenum rated jacket

Package Includes

- 3M (9.84-ft.) MTP / MPO Fan-out Cable, MTP/MPO to 8 x LC, 40GbE OM3 Plenum

Features

- MTP / MPO to 8 x LC Fan-out Cable
- Push/Pull tab connectors offer maximum accessibility in high density installations; install / remove with one hand without needing additional tools
- Slim uniboot design saves space and makes cables easier to manage
- Premium-grade ceramic ferrule designed specifically for 10GbE and faster applications
- Sturdy plastic housing for long-lasting durability
- OM3, 40GbE rated, 40GBASE-SR4
- Backward compatible with existing 50/125 fiber
- Plenum rated jacket

Specifications

OVERVIEW	
UPC Code	037332185273
Technology	Multimode
Optical Mode	OM3

PHYSICAL	
Cable Jacket Color	Aqua
Connector Color	Aqua; Black; Aqua
Cable Jacket Material	PVC
Cable Jacket Rating	OFNP
Clad Diameter (microns)	125
Core Diameter (microns)	50
Number of Fibers	8
Cable Length (ft.)	9.8
Cable Length (m)	2.99
Cable Length (in.)	118.1
Minimum Bend Radius	20 mm (Dynamic); 10 mm (Static)
Shipping Dimensions (hwd / in.)	0.50 x 7.00 x 9.00
Shipping Dimensions (hwd / cm)	1.27 x 17.78 x 22.86
Shipping Weight (lbs.)	0.50
Shipping Weight (kg)	0.23
Fiber Cable Length	3M (9.8 ft)
ENVIRONMENTAL	
Operating Temperature Range	-4° to 140°F (-20° to 60°C)
Storage Temperature Range	-4° to 140°F (-20° to 60°C)
Operating Humidity Range	5% to 85% RH, Non-Condensing
Storage Humidity Range	35% to 65% RH, Non-Condensing
COMMUNICATIONS	
Network Compatibility	40 Gbps; 100 Gbps; 400 Gbps
Attenuation @ 850NM	3.0 dB/km
Insertion Loss	0.35 dB
CONNECTIONS	
Side A - Connector 1	12-STRAND MTP/MPO (FEMALE)
Side B - Connector 1	(8) LC DUPLEX (MALE)
Endface Polish	PC
FEATURES & SPECIFICATIONS	
Push/Pull Tabs	Yes

Breakout	Yes
Trunk	Yes
STANDARDS & COMPLIANCE	
Product Compliance	RoHS; REACH
WARRANTY & SUPPORT	
Product Warranty Period (Worldwide)	Lifetime limited warranty