

1MM & 2MM Hard Metric Plugboards

Plugboard

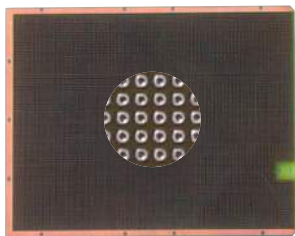
Features:

- 3UX160MM Eurocard size (3.94" x 6.3") fit in Vector 3U DIN Subracks
- 2mm Connectors can be installed
- Copper plated thru holes, solder plated
- Grid Combination Boards

Several Versions of 2MM grid / combination grid boards are manufactured in DIN Eurocard 3U standard. These utility boards become cPCI or PXI usable by installation of a J1 'Type A' or J2 'Type AB' connector onto the board end. Vector K36C series tin plated pins may be used for wiring of .025" diameter holes and a variety of solder or wire-wrap pins and terminals are available for .042" diameter holes.

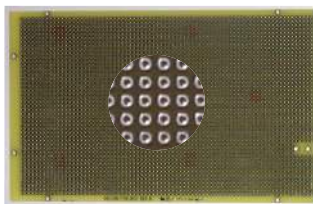
All boards are made of FR-4 Epoxy Glass, UL94 V-O, MIL-STD P13949, Type GF. All boards are .062" (1/16" or 0.6mm) thick.

All boards described here fit into our Vector-Pak CCA26 or CCK 26 series of 3U subracks.



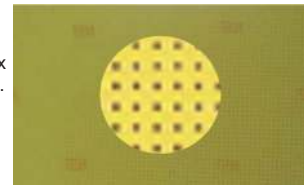
8020 100mm x 160mm x .062" TH

1mm grid in 3U Eurocard size. (3.94" x 6.3") .025" copper plated thru holes with annular rings, NO SOLDER PLATING. Accepts cPCI 2mm J1 (25 row) & J2 (22 row) connectors on edge
Material: FR4
Solder Terminals: K36



8017 100mm x 160mm x .062" TH

2mm grid Pattern Q in 3U Eurocard size (3.94" x 6.3"). .025" holes plated thru with annular ring. Accepts cPCI 2mm J1 (25 row) & J2 (22 row) connectors on edge
Material: FR4
Solder Terminals: K36



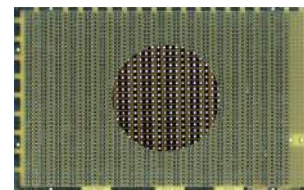
47Q78WE 2mm Grid, holes only, no Copper

Accepts cPCI 2mm J1 (25 row) & J2 (22 row) on edge.
Material: FR-4



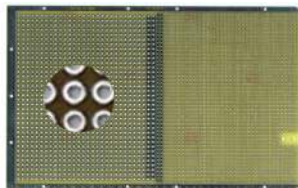
8017J1 2mm grid, Pad-Per-Hole Connector

Same as 8017 but with cPCI 2mm, J1 25 row connector installed



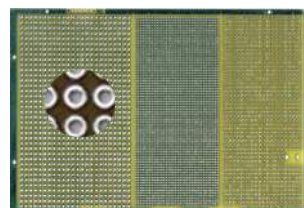
8024 3.94"H x 6.3"L x .062" TH 100mm x 160mm

2mm grid in 3U Eurocard size. 3-hole solder pad pattern with voltage and ground busses between pads and on board perimeter both sides. Row and column legends. .025" plated-thru holes with annular ring. Card accepts 25-row J1 Hard Metric connector (order 8024J1 for connector installed version).
Material: FR-4
WW Terminals: K36
Card Cage: CCA26



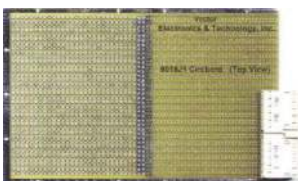
8018 100mm x 160mm x .062" TH

Combo: 0.100" & 2mm grid in 3U Eurocard size (3.94" x 6.3"), Pad-Per-Hole. Dual copper rows in middle for Vcc/Gnd use. .025" & .042" holes plated thru with annular ring. Accepts cPCI 2mm J1 (25 row) & J2 (22 row) connectors on edge
Material: FR4
Solder Terminals: .025" dia. K36
.042" dia. T42-1, T46



8028 3.94"H x 6.3"L x .062" TH 100mm x 160mm

THREE-GRID COMBO. .100", .050" AND 2mm all in 3U Eurocard size. Pad-per-hole with voltage and ground busses on board perimeter. .042" (.100" grid) and .025" (.050" and 2mm) plated thru holes with annular ring. Card edge accepts 25-row J1 Hard Metric connector (order 8028J1 for connector installed version).
Material: FR-4
WW Terminals: (.025" holes) = K36
WW Terminals: (.042" holes) = T44, T46, T49, T68
Card Cage: CCA26



8018J1 2mm/.100" Pad-Per-Hole Grid Combo wJ1

Same as 8018 but with cPCI 2mm J1 25 row connector installed