

- * LVDS Output
- * Industry Standard Outline

- Applications**
- * Serial Communications
 - * Routers
 - * Switches
 - * WAN Interfaces
 - * Test Equipment



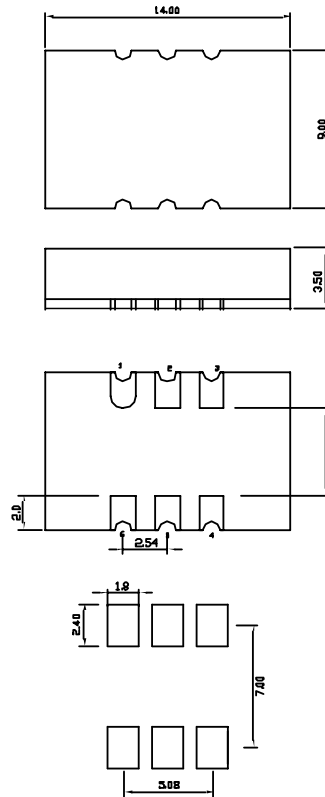
Part Numbering Example: CFL Z - A5 BP - 222.5792 TS

CFL	Z	A5	BP	222.5792	TS
SERIES	PACKAGING OPTIONS	OPERATING TEMP.	STABILITY	FREQUENCY	TRI-STATE
CFL	Blank = Bulk Z = Tape and Reel	Blank = 0°C ~ +70°C A5 = -20°C ~ +70°C A7 = -40°C ~ +85°C	Blank = ±100 ppm BP = ±50 ppm		TS = Tri-State

Specifications:	Min	Typ	Max	Unit
Frequency Range:	38		640	MHz
Stability:	-50		+ 50	ppm
Supply Voltage:	3.135	3.3	3.465	V
Operating Temperature:	-40		+ 85	°C
Storage Temperature:	-55		+ 125	°C
Duty Cycle:	45		55	%
Start-Up Time:		3	10	mS
Aging: (ppm/1st Year) Ta=25C, Vdd=3.3V			5	ppm
Supply Current:			100	mA
Short Circuit Current:		± 50		mA
RMS Period Jitter:		5		pS
RMS Integrated Jitter: 12kHz to 20MHz		0.7		pS
Phase Noise @ 10kHz:			-120	dBc/Hz
Output Voltage: Voh Vol	Vdd - 0.9		Vdd - 1.6	V V
Output Differential Voltage:	247	355	454	mV
Rise/Fall Time:		0.4	0.8	nS
Output Level:	LVDS			
Packaging:	Tape and Reel 1000 pcs per Reel			

CFL

Dimensions are in mm



- PIN Function**
- 1 ENABLE
 - 2 NO CONNECT
 - 3 Ground
 - 4 LVDS +
 - 5 LVDS -
 - 6 Vdd

LVDS Levels Test Circuit

