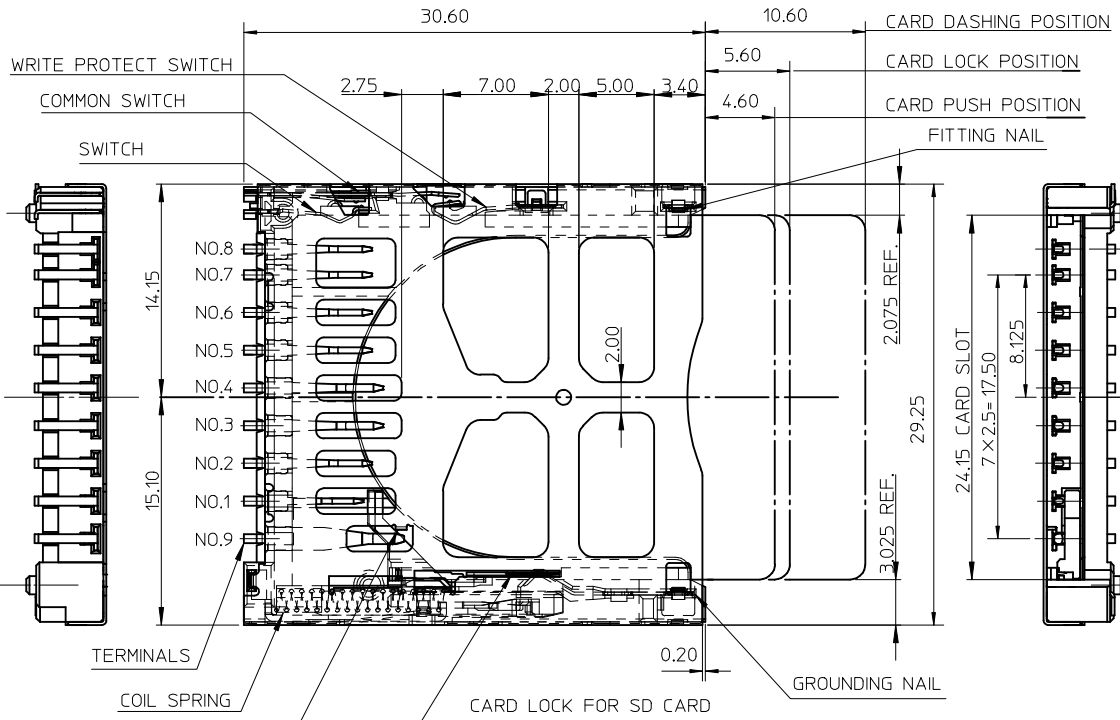
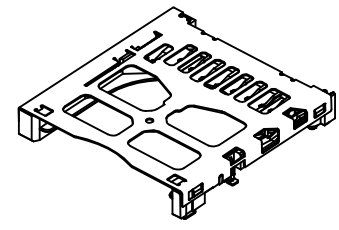
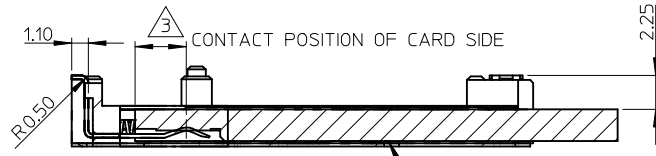
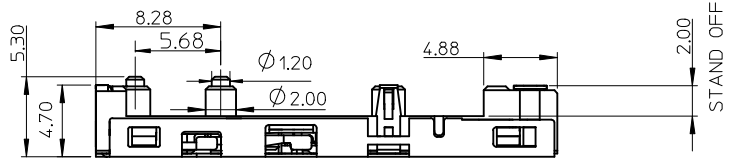


10 9 8 7 6 5 4 3 2 1



NOTES:
 1. HOUSING: HIGH TEMPERATURE THERMOPLASTIC, GLASS FIBER FILLED. UL94V-0. COLOR: BLACK
 TERMINAL: COPPER ALLOY, SELECTIVE Au PLATING
 METAL SHELL: STAINLESS STEEL
 EACH SWITCHES: COPPER ALLOY, SELECTIVE Au PLATING.
 EACH NAILS: COPPER ALLOY, SELECTIVE AU PLATING.
 COIL SPRING: STEEL WIRE.
 CAM PIN: STAINLESS STEEL
 2. TERMINAL AND NAIL COPLANARITY TO BE 0.1MAX
 3. CONTACT POSITION OF CARD SIDE

TERMINAL NO.	CONTACT POSITION
NO.1	2.4
NO.2,5,6,7,8	2.9
NO.3,4	3.4
NO.9	5.2

4. OPEN/CLOSE OF EACH SWITCH

	WRITE PROTECT SWITCH		SWITCH
	WRITE PROTECT POSITION	WRITE ENABLE POSITION	
CARD UNINSERTION	OPEN	OPEN	OPEN
CARD HALF INSERTION	CLOSE	CLOSE	OPEN
CARD INSERTION	OPEN	CLOSE	CLOSE

- 5. WHEN DELIVERING, THE PUSH/PUSH MECHANISM IS IN THE STATE OF THE UNLOCK.(CARD DASHING OUT POSITION)
- 6. CARD READ ONLY BY THE TIME THE CARD DETECTION.
- 7. I/O CONTACTS, BASE ON SD I/O ASSOC. REV.G.
- 8. PRODUCT SPECIFICATION: SEE TABLE
- 9. TERMINAL 1 TO BE SIGNAL DETECTING WHEN SD CARD INSERTING.
- 10. PRODUCT COMPLIANT TO RoHS DIRECTIVE 2002/95/EC AND ELV 2000/53/EC.

PART NO.	DESCRIPTION	PRODUCT SPECIFICATION	REMARK
67955-8001	STANDARD	PS-67913-003	FOR SD ONLY
67955-8002	STANDARD W/O CARD LOCK PIN		SD/MMC

UPDATE DRAWING
 EC NO: SH2009-0154
 DRWN: LSONG 2008/09/18
 CHKD: XJSONG 2008/09/18
 APPR: HWANG 2008/10/23

QUALITY SYMBOLS
 ▽=0
 ▽=0
 GENERAL TOLERANCES (UNLESS SPECIFIED)
 4 PLACES ± --- ± ---
 3 PLACES ± --- ± ---
 2 PLACES ± 0.25 ± ---
 1 PLACE ± 0.25 ± ---
 ANGULAR ± 3°
 DRAFT WHERE APPLICABLE MUST REMAIN WITHIN DIMENSIONS

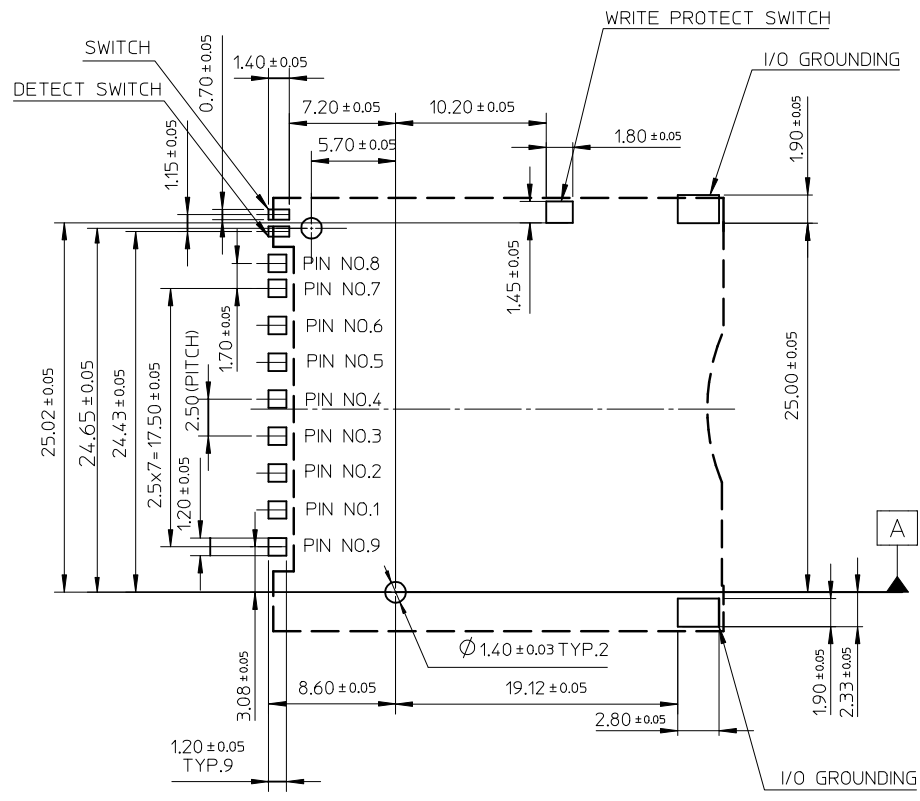
DIMENSION STYLE
MM ONLY
 DRAWN BY: QLZHANG
 CHECKED BY: HARVEY
 APPROVED BY: VINCENT
 DATE: 2005/04/06
 DATE: 2005/04/06
 DATE: 2005/04/06

SCALE: 3:1
 DESIGN UNITS: METRIC
 THIRD ANGLE PROJECTION
 TITLE: SD/I/O CARD CONN. STAND OFF 2.0 MM(LEAD-FREE, PUSH-PUSH & REVERSE)
 MOLEX MOLEX INCORPORATED
 MATERIAL NO. SEE TABLE
 DOCUMENT NO. SD-67955-003
 SHEET NO. 1 OF 3
 THIS DRAWING CONTAINS INFORMATION THAT IS PROPRIETARY TO MOLEX INCORPORATED AND SHOULD NOT BE USED WITHOUT WRITTEN PERMISSION

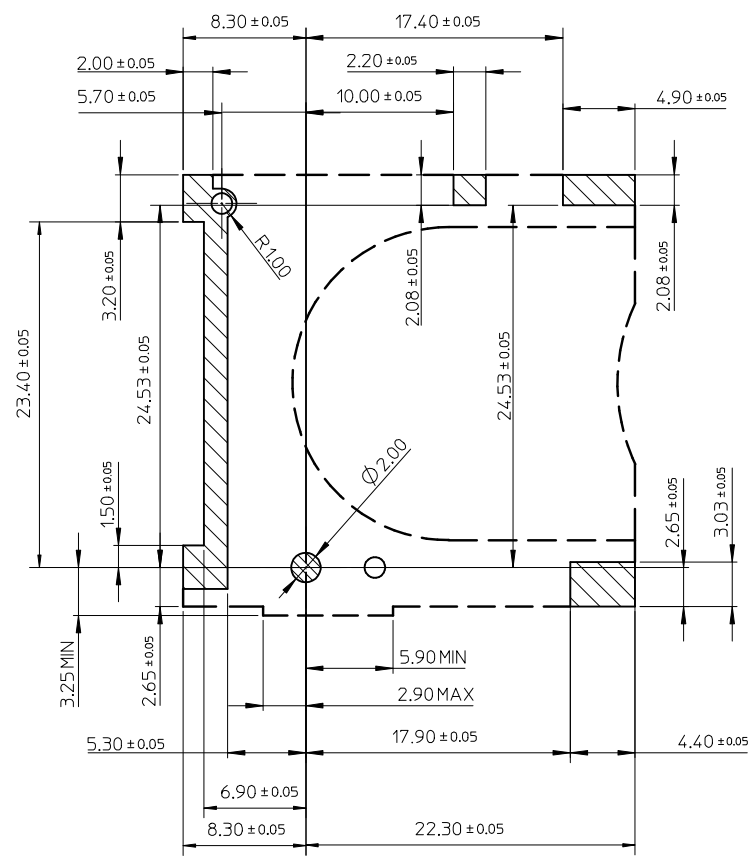
9 8 7 6 5 4 3 2 1

10 9 8 7 6 5 4 3 2 1

F
E
D
C
B
A



RECOMMENDED PCB PATTERN LAYOUT

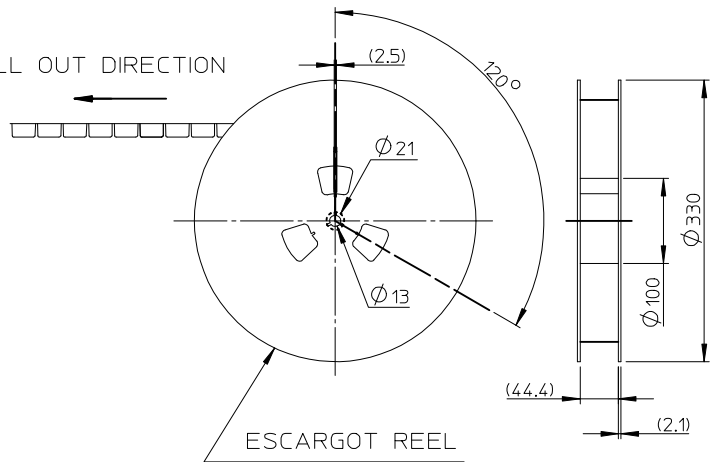


STAND OFF AREA FOR PATTERN PROHIBITION

SEE SHEET 1 EC NO: SH2009-0154 DRWN: SONG9 CHKD: XJSONG APPR: HWANG 2008/09/18 2008/09/18 2008/10/23	QUALITY SYMBOLS ▽=0 ◻=0	GENERAL TOLERANCES (UNLESS SPECIFIED)		DIMENSION STYLE MM ONLY		SCALE 3:1	DESIGN UNITS METRIC	THIRD ANGLE PROJECTION			
		4 PLACES ± --- ± ---	3 PLACES ± --- ± ---	2 PLACES ± 0.25 ± ---	1 PLACE ± 0.25 ± ---	ANGULAR ± 3 °	DRAWN BY QLZHANG	DATE 2005/04/06	TITLE SD/IO CARD CONN.STAND OFF 2.0 MM(LEAD-FREE, PUSH-PUSH & REVERSE)		
		DRAFT WHERE APPLICABLE MUST REMAIN WITHIN DIMENSIONS					APPROVED BY VINCENT	DATE 2005/04/06	MOLEX INCORPORATED		
		SEE SHEET 1					MATERIAL NO.	DOCUMENT NO.	SD-67955-003		SHEET NO. 2 OF 3

9 8 7 6 5 4 3 2 1

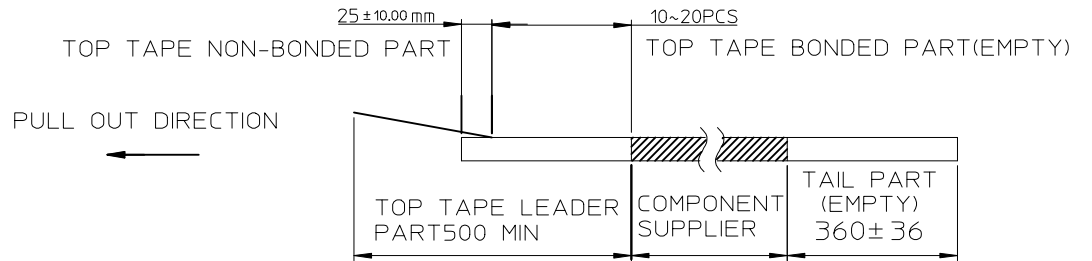
PULL OUT DIRECTION



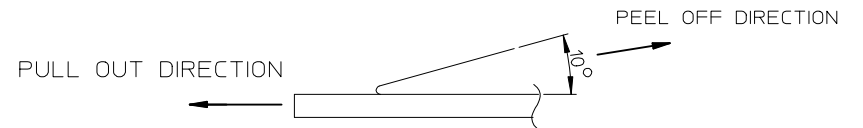
ESCARGOT REEL

NOTES

1. NUMBER OF CONNECTORS:250 PCS/REEL
- 2.

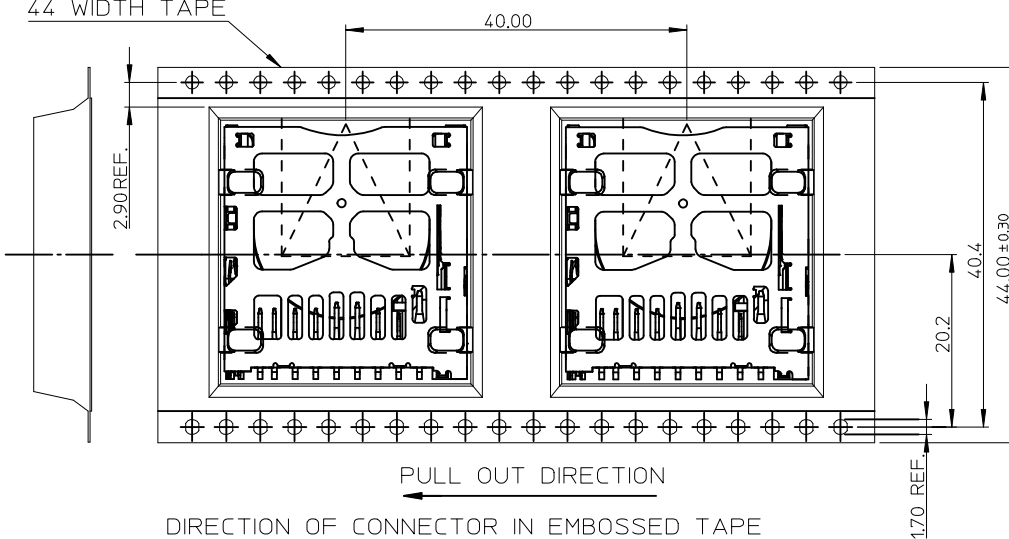


3. PEEL OFF FORCE OF TOP TAPE: 0.1~1.3 N (10.2~130gf)
PEELING DIRECTION AS SHOWN IN FOLLOWING FIG.)
(PEEL OFF SPEED: 300mm/min.REF.)



4. PACKAGING DRAWING REFERS TO PK-67955-001.

44 WIDTH TAPE



DIRECTION OF CONNECTOR IN EMBOSSED TAPE

SEE SHEET 1	EC NO: SH2009-0154	2008/09/18
	DR:WNLSONG09	2008/09/18
	CHKD:XJSONG	2008/09/18
	APPR:HWANG	2008/10/23

QUALITY SYMBOLS	▽=0
	∇=0

GENERAL TOLERANCES (UNLESS SPECIFIED)	mm	INCH	
	4 PLACES	± ---	± ---
	3 PLACES	± ---	± ---
	2 PLACES	± 0.25	± ---
	1 PLACE	± 0.25	± ---
	ANGULAR ± 3 °		
DRAFT WHERE APPLICABLE MUST REMAIN WITHIN DIMENSIONS			

DIMENSION STYLE		SCALE	DESIGN UNITS	THIRD ANGLE PROJECTION
MM ONLY		1:1	METRIC	
DRAWN BY	DATE	TITLE		
QLZHANG	2005/04/06	SD/IO CARD CONN.STAND OFF 2.0 MM(LEAD-FREE, PUSH-PUSH & REVERSE)		
CHECKED BY	DATE	MOLEX INCORPORATED		
HARVEY	2005/04/06	DOCUMENT NO. SD-67955-003		
APPROVED BY	DATE	SHEET NO. 3 OF 3		
VINCENT	2005/04/06			
MATERIAL NO.		THIS DRAWING CONTAINS INFORMATION THAT IS PROPRIETARY TO MOLEX INCORPORATED AND SHOULD NOT BE USED WITHOUT WRITTEN PERMISSION		
SEE SHEET 1				