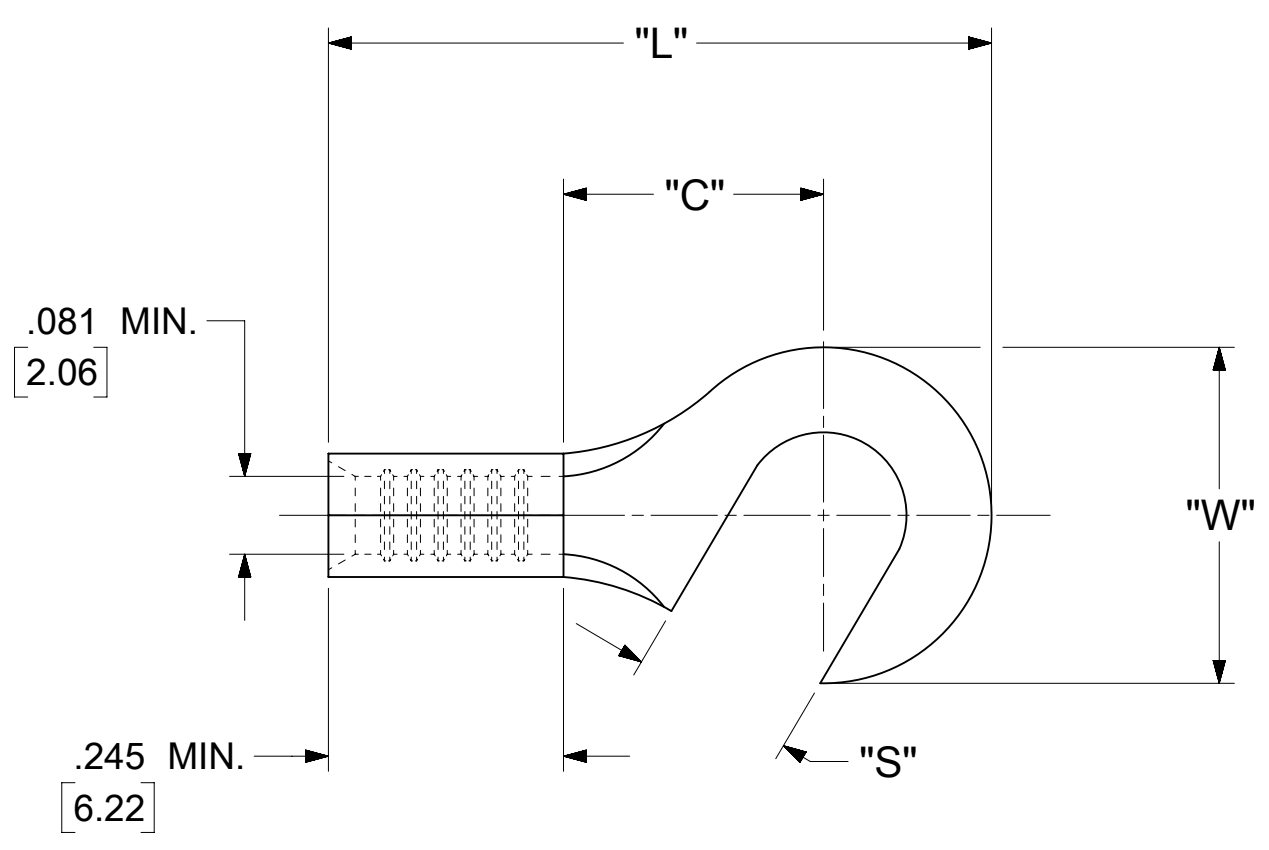


LOOSE PIECE		SPECIFICATIONS				
MATERIAL NUMBER	ENGINEERING NUMBER	STUD SIZE	"S" ±.005 [0.13]	"W" ±.010 [0.25]	"C" MIN.	"L" MAX.
191700007	B-119-06	6	.146 [3.71]	.350 [8.89]	.271 [6.88]	.752 [19.10]
191700009	B-119-08	8	.173 [4.39]			
191700011	B-119-10	10	.198 [5.03]			



- NOTES:
- MATERIAL:  
TERMINAL: COPPER ( STOCK TKN .031±.001 [0.79] )  
PLATING: ELECTRO-TIN (.0003 MIN).
  - WIRE SIZE: 16 -14 AWG  
1.0 - 2.5 MM<sup>2</sup>
  - "UL" LISTING #E32244  
"CSA" LISTING #18689
  - ALL DIMENSIONS IN INCHES/[MM].
  - PARTS ARE ROHS COMPLIANT.
  - DIMS. SHOWN ARE FOR REFERENCE ONLY.

SYMBOLS	THIS DRAWING CONTAINS INFORMATION THAT IS PROPRIETARY TO MOLEX ELECTRONIC TECHNOLOGIES, LLC AND SHOULD NOT BE USED WITHOUT WRITTEN PERMISSION					
	DIMENSION UNITS	SCALE		CURRENT REV DESC:		
▽ = 0	INCH/MM	NTS		<b>molex</b> HOOK TONGUE TERMINAL KRIMPTITE 100-SERIES PRODUCT CUSTOMER DRAWING		
▽ = 0	GENERAL TOLERANCES (UNLESS SPECIFIED)		EC NO: 625848			
▽ = 0		MM	INCH			DRWN: ABENJAMINLW 2019/09/13
▽ = 0	4 PLACES	±	---	±	---	CHK'D: GROJAS01 2019/10/17
▽ = 0	3 PLACES	±	---	±	.005	APPR: JMACNEIL 2019/10/18
▽ = 0	2 PLACES	±	0.13	±	.01	INITIAL REVISION:
▽ = 0	1 PLACE	±	0.25	±	---	DRWN: KO 1984/10/15
▽ = 0	0 PLACES	±	---	±	---	APPR:
▽ = 0	ANGULAR TOL	±	0.5 °	THIRD ANGLE PROJECTION		
▽ = 0	DRAFT WHERE APPLICABLE MUST REMAIN WITHIN DIMENSIONS	DRAWING		SERIES	MATERIAL NUMBER	CUSTOMER
▽ = 0		C-SIZE		19170	SEE TABLE	GENERAL MARKET
					DOCUMENT NUMBER	DOC TYPE
					BCD10102	PSD
					DOC PART	001
					REVISION	A
					SHEET NUMBER	1 OF 1