

4

3

2

1

THIS DRAWING IS UNPUBLISHED.

RELEASED FOR PUBLICATION

© COPYRIGHT

ALL RIGHTS RESERVED.

LOC DIST

REVISIONS

P	LTR	DESCRIPTION	DATE	DWN	APVD
	D2	ECR-13-005581	01APR2013	XZ	LZ

REPLACED BY OCEAN STYLE APPLICATOR PART NUMBER 2151405-1

FOR REPLACEMENT PARTS FOR APPLICATOR 1852314
REFER TO ADDITIONAL PAGE(S). SPARE PARTS KIT (IF LISTED)
WILL REMAIN AVAILABLE.

THE REPLACEMENT OCEAN STYLE APPLICATOR HAS THE
SAME TERMINATOR/PRESS INTERFACE AS APPLICATOR
1852314

Dimensioning and tolerancing per ASME Y14.5M-2009


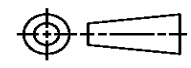
B

A

Dimensioning and tolerancing per ASME Y14.5M-2009

B

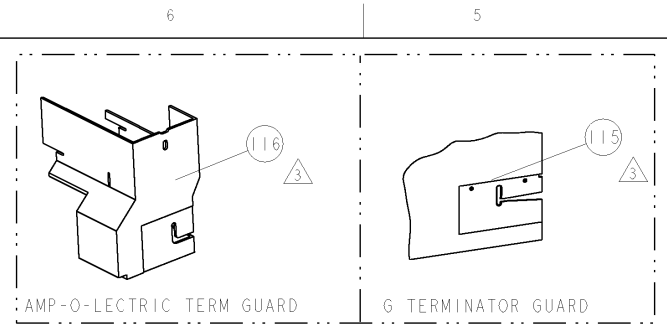
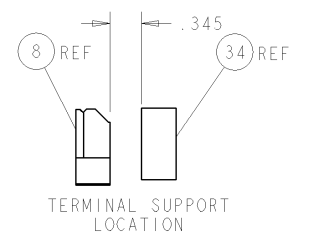
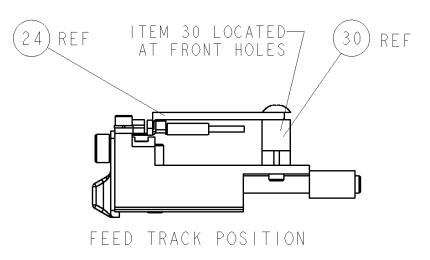
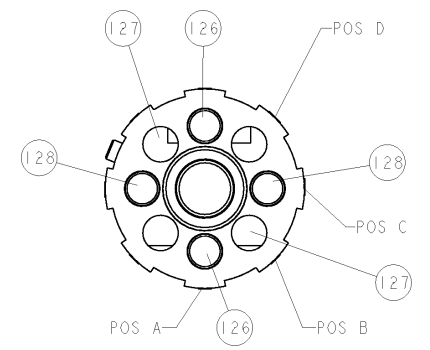
A

THIS DRAWING IS A CONTROLLED DOCUMENT.		DWN X. ZHAO	 TE Connectivity		
DIMENSIONS:		CHK L. ZHANG			
		APVD L. ZHANG	NAME		
TOLERANCES UNLESS OTHERWISE SPECIFIED:		PRODUCT SPEC	SIDE FEED HDM APPLICATOR		
0 PLC ±	1 PLC ±	APPLICATION SPEC	SIZE	CAGE CODE	DRAWING NO
2 PLC ±	3 PLC ±		A3		©- 1852314
4 PLC ±	ANGLES ±				RESTRICTED TO
MATERIAL	FINISH	WEIGHT			
			SCALE	SHEET 1 OF 2	REV D2

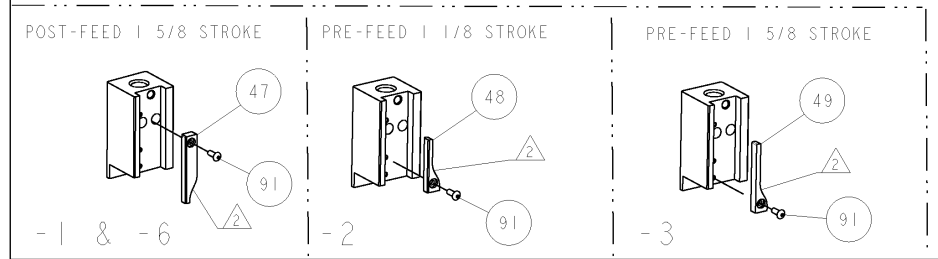
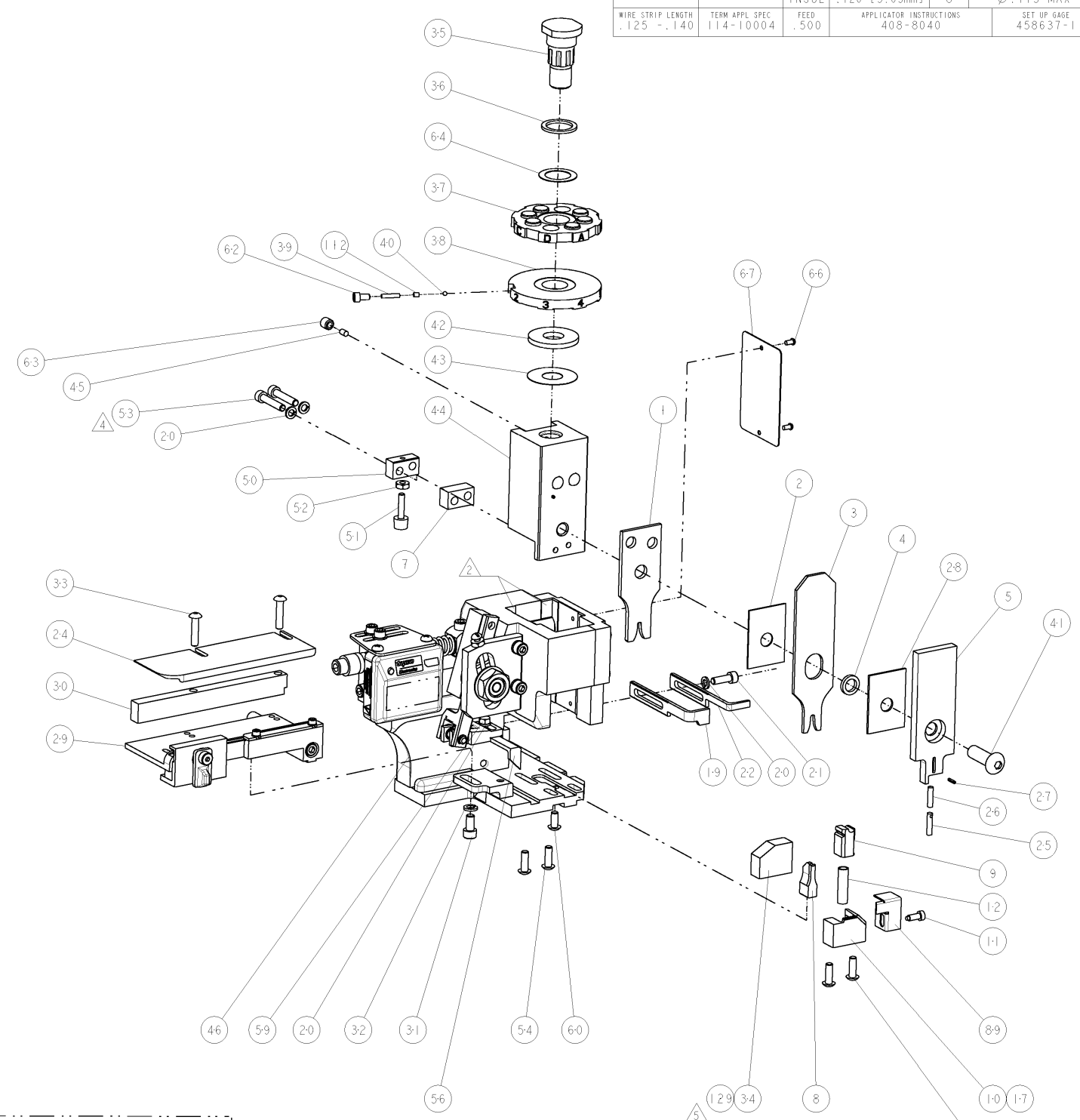
Dimensioning and tolerancing per ASME Y14.5M-2009

PART NUMBER	REV	FIRST USED	POWER UNIT	FEED TYPE	DESCRIPTION
1852314-1	D	122500-1	LEADMAKER	POST FEED	CUTS CARRIER
1852314-2	D	565435-5	BENCH MODEL K	PRE FEED	CUTS CARRIER
1852314-3	D	354500-1	BENCH MODEL G	PRE FEED	CUTS CARRIER
1852314-6	D	122500-1	LEADMAKER	POST FEED	CONTINUOUS CARRIER
7-1852314-7	B	-	-	-	SPARE PARTS

- △ RECOMMENDED SPARE PARTS
- △ GREASE LIGHTLY
- △ GUARD MUST BE IN PLACE WHEN OPERATING APPLICATOR IN A BENCH MACHINE
- △ CUT TO LENGTH AT ASSEMBLY.
- △ USE ITEM 34 FOR PIN TERMINALS AND ITEM 129 FOR SOCKET TERMINALS.



SOCKET		PIN		TE TERMINAL - TE CRIMP SPECS	
66598	213603				
-	66597	PAD LTR	CRIMP HEIGHT	WIRE SIZE	
-	-	A	.068±.002 [1.73±0.05mm]	14 AWG	
-	-	B	.059±.002 [1.50±0.05mm]	16 AWG	
-	-	C	.052±.002 [1.32±0.05mm]	18 AWG	
-	-	D	-	-	
-	-	CRIMP	SIZE	TYPE	RANGE
-	-	WIRE	.090 [2.29mm]	F	18-14 AWG
-	-	INSUL	.120 [3.05mm]	O	∅.115 MAX
WIRE STRIP LENGTH	TERM APPL SPEC	FEED	APPLICATOR INSTRUCTIONS		SET UP GAGE
.125 ±.140	114-10004	.500	408-8040		458637-1



LOC	REV	DESCRIPTION	DATE	BY	APPV
A	66	ECR-07-029943	12DEC2007	MY	TE

QTY	UNIT	DESCRIPTION	ITEM NO
1		690786-1	TERMINAL SUPPORT
2		2-354779-2	PIN, WIRE DISC, .3100
2		354779-6	PIN, WIRE DISC, .3020
2		8-354778-7	PIN, WIRE DISC, .2930
-	REF	455749-1	GUARD WINDOW
-	REF	679532-1	INSERT, GUARD
1		690603-1	SPRING ASSIST AMP-O-MATOR APPLICATOR
1		1-21002-7	SCR, BTN SKT HD CAP 6-32 X .375
1		318563-1	GUARD, FRONT CHIP
1		4088040	SF APPL INST 408-8040
1		217238-1	GENERAL INSTRUCTION PKG
1		461264-1	PLATE, IDENTIFICATION
2		21017-2	SCREW, DRIVE
1		986950-1	WASHER, FLAT PRECISION
1		21009-2	SCR, SET, SELF LOCKING 1/4-20 X .250
1		23030-1	SCR, SKT HD CAP 6-32 X .25
1		22733-8	SCR, BHSC, SELF-LOCKING, 8-32 X .375
1		2-22603-0	SCR, HEX HD CAP 8-32 X .312
1		458537-2	PAWL, FEED
4		2-21002-2	SCR, BTN SKT HD CAP 8-32 X .500
2		3-21000-0	SCR, SKT HD CAP 8-32 X .875
1		21018-5	NUT, HEX, REG 6-32
1		811242-2	BUMPER, HOLD DOWN
1		690753-1	SPACER, TONKER
-	-	690602-6	CAM, PRE FEED, 1 5/8
-	-	690602-5	CAM, PRE FEED, 1 1/8
-	-	690501-4	CAM, POST FEED, 1 5/8
1		459456-6	APPL. BASIC SUB ASSY (SIDE WISE MOCA)
1		690191-1	PLUG, NYLON
1		455673-1	RAM, SIDE FEED
1		690125-1	SHIM SUB-ASSY
1		690124-1	WASHER, RAM (.115)
1		7-21002-9	SCR, BTN SKT HD CAP 5/16-24 X 1.00
1		23241-6	BALL, STEEL
1		690170-1	SPRING, COMPRESSION
1		690142-1	DISC, INSULATION
1		354777-1	WIRE DISC, ASSEMBLY
1		22480-5	SPRING, COMPRESSION
1		690212-1	POST, RAM
1		690786-2	TERMINAL SUPPORT
2		2-21002-4	SCR, BTN SKT HD CAP 8-32 X .750
1		21024-5	WASHER, SPRG LOCK, REG NO 10
1		3-21000-4	SCR, SKT HD CAP 10-32 X .375
1		1320908-1	SPACER, STRIP GUIDE
1		1633091-7	ASSEMBLY, STRIP GUIDE
1		1-455888-0	SPACER, CRIMPER
1		21028-2	PIN, SLOTTED SPRING .062 X .250
1		1-22278-0	SPRING, COMPRESSION
1		854769-1	HOLDER, INS
1		1320928-5	PLATE, STRIP GUIDE
1		690472-2	STRIPPER
1		2-21000-7	SCR, SKT HD CAP 8-32 X .500
4		21024-4	WASHER, SPRG LOCK, REG NO 8
-	-	691353-1	STRIPPER
1		679625-1	SHEAR HOLDER, FRONT (NO CUT)
1		3-22280-3	SPRING, COMPRESSION
1		690461-1	STOP, SHEAR
1		690459-1	SHEAR HOLDER, FRONT
1		462006-1	FLOATING SHEAR, FRONT
1		1-1633110-1	ANVIL, COMBINATION .090
1		6-240641-2	SPACER
1		854772-1	DEPRESSOR, SHEAR
1		2-238011-2	BLOCK, CRIMPER SPACER
1		2-456135-4	CRIMPER, INSULATION O PREMIUM
1		455888-6	SPACER, CRIMPER
1		5-456406-5	CRIMPER, WIRE PREMIUM

DIMENSIONS: INCHES		TOLERANCES UNLESS OTHERWISE SPECIFIED:		DRAWN: M. HERR		DATE: 02AUG2006	
0	PLC	+		CHKD: G. BAILEY		DATE: 03AUG2006	
1	PLC	±		APPV: T. FABIN		DATE: 03AUG2006	
2	PLC	±	.01	NAME: tyco			
3	PLC	±	.001	Tyco Electronics			
4	PLC	±	.0001	Harrisburg, PA 17105-3608			
MATERIAL:				PRODUCT SPEC:			
FINISH:				APPLICATION SPEC:			
WEIGHT:				114-10004			
CUSTOMER DRAWING:				SIZE: A			
				CAGE CODE: 00779			
				DRAWING NO: 1852314			
				RESTRICTED TO:			
				SCALE: 3:5			
				SHEET 1 OF 1			
				REV'D:			

CUSTOMER VIEWABLE ASSEMBLY