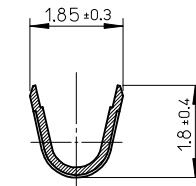
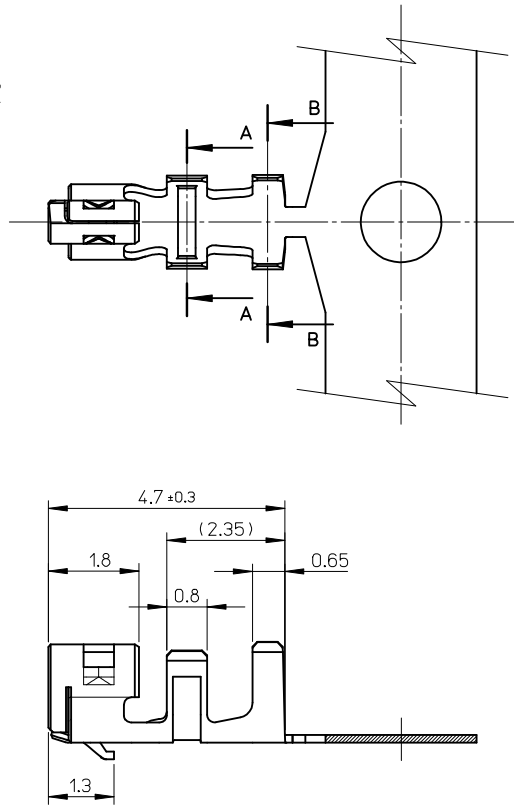
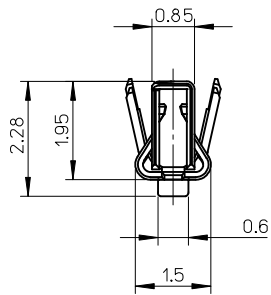
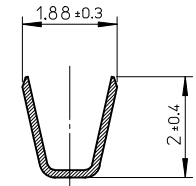


NOTES

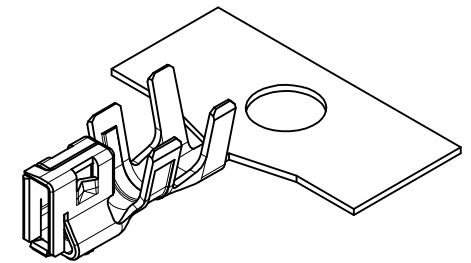
1. Applicable housing: 502351-**00
2. Material: Phosphor bronze, pre-tinned, t=0.152



SECTION A-A



SECTION B-B



WIRE RANGE AWG: #22~#26
INSULATION RANGE Ø1.4 MAX.

REVISED EC NO: JTR2013-0056 DRWN: YAMAKI 2013/03/19 CHKD: HKOMATSU 2013/03/19 APPR: MAYAMOTO 2013/03/21 REV: 0	DESCRIPTION GENERAL TOLERANCES (UNLESS SPECIFIED) 10 UNDER ± 0.2 10 OVER 30 UNDER ± 0.25 30 OVER ± 0.3 ANGULAR ± 3 ° DRAFT WHERE APPLICABLE MUST REMAIN WITHIN DIMENSIONS	DIMENSION STYLE MM ONLY	SCALE 10:1	DESIGN UNITS METRIC	THIRD ANGLE PROJECTION	
		DRAWN BY YAMAKI	DATE 2013/03/19	TITLE 2.0 WIRE TO BOARD CONN. CRIMP RECEPTACLE (DuraClik)		
		CHECKED BY HKOMATSU	DATE 2013/03/19	MATERIAL No. 560085-0101 CHAIN FORM		
		APPROVED BY MAYAMOTO	DATE 2013/03/21	DOCUMENT NO. SD-560085-001 SHEET NO. 1 OF 1		
MATERIAL NO. SEE CHART		THIS DRAWING CONTAINS INFORMATION THAT IS PROPRIETARY TO MOLEX INCORPORATED AND SHOULD NOT BE USED WITHOUT WRITTEN PERMISSION				