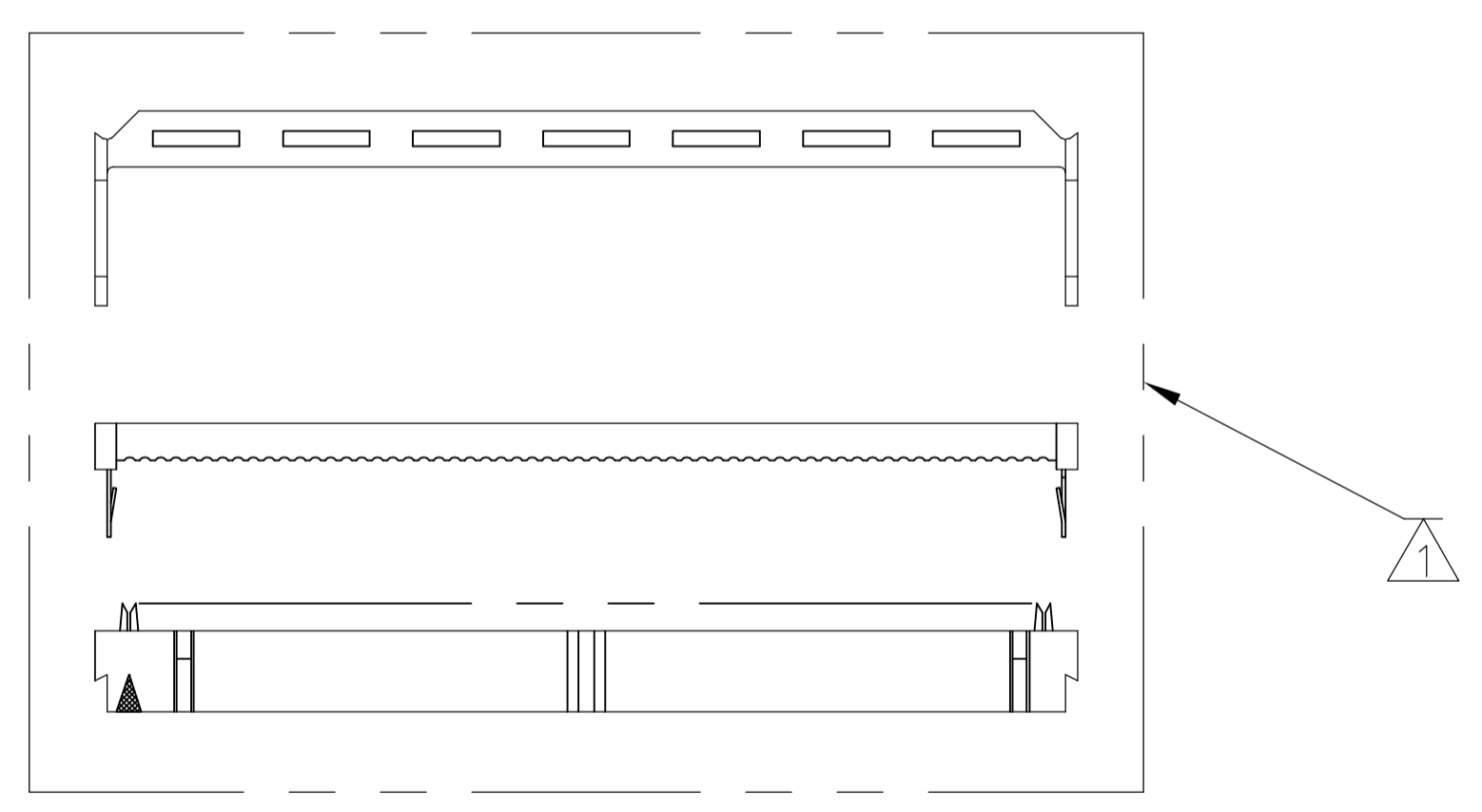
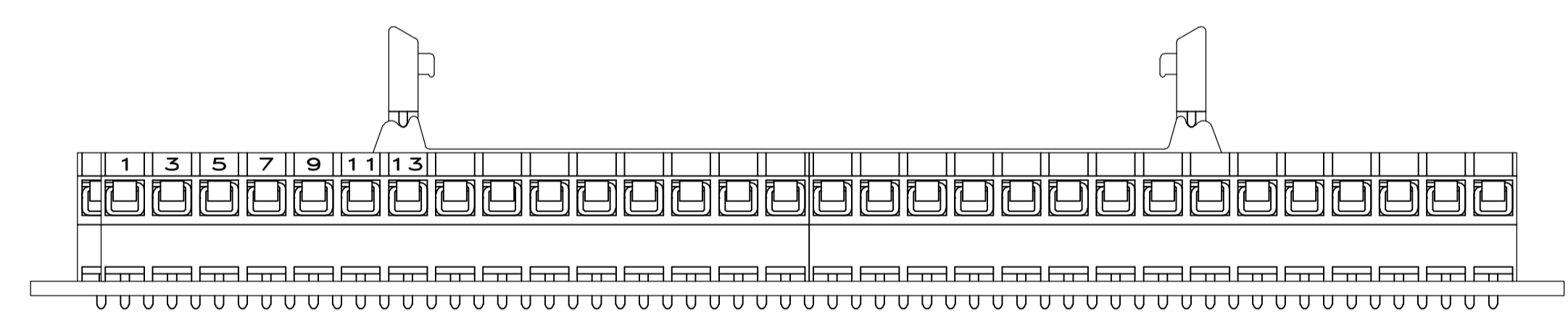
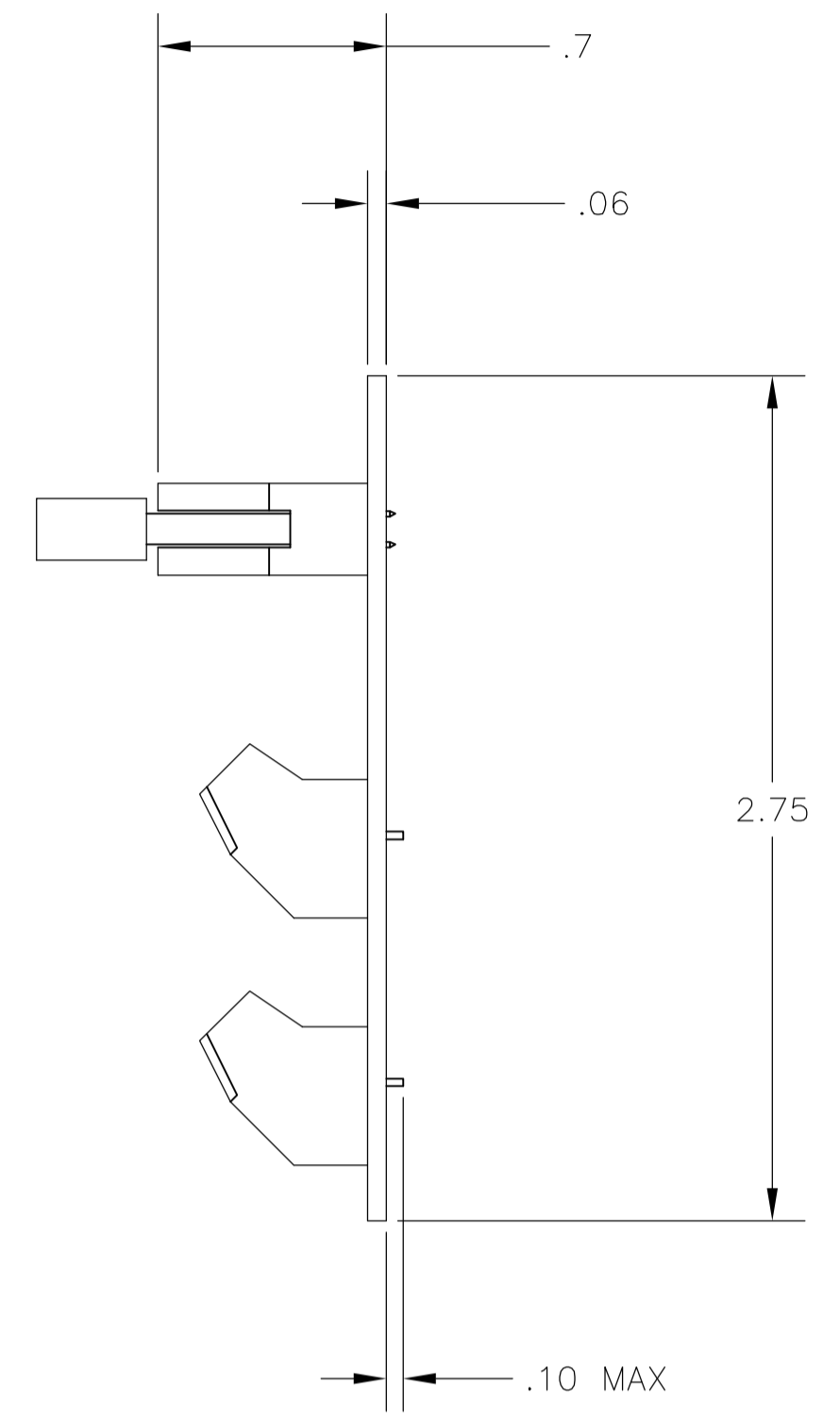
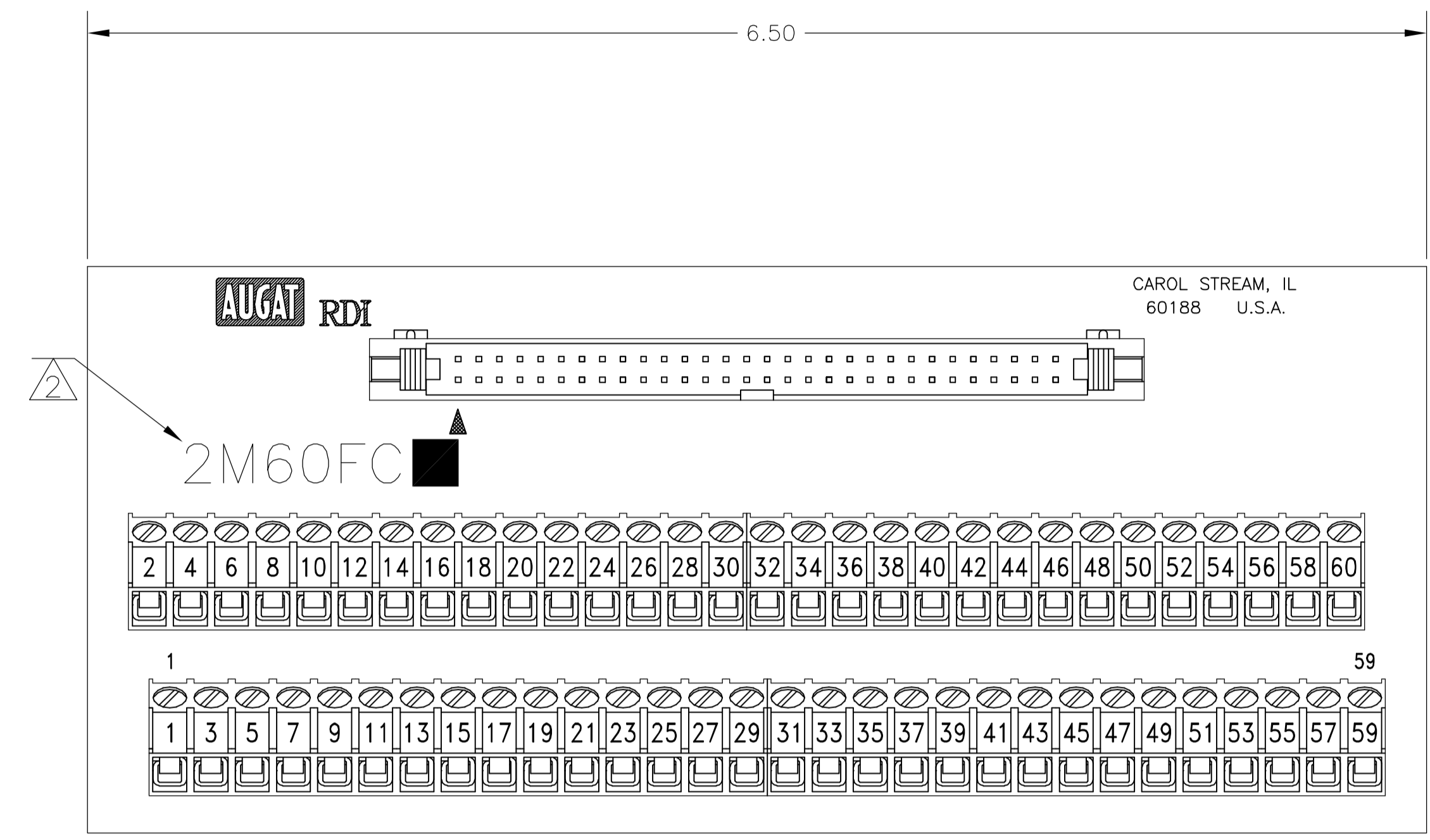


LOC		DIST		REVISIONS			
FT	O	REV	DATE	BY	APPV	DATE	BY
A		1	9/30/05	SS	SRV		

HEADER:
MATERIALS:
 HEADER: COPPER ALLOY, GOLD PLATED,
 94V-0 THERMOPLASTIC.
 CONNECTOR: COPPER ALLOY, GOLD PLATED,
 94V-0 THERMOPLASTIC.
ELECTRICAL:
 RATING: 1 AMPERE MAX. (CONNECTOR).
MECHANICAL:
 WIRE RANGE: 26-30 AWG SOLID, 28 AWG STRANDED.
TERMINAL BLOCK:
MATERIALS:
 HOUSING: THERMOPLASTIC NYLON, BLACK, 94V-0.
 TERMINALS: COPPER ALLOY, TIN PLATED.
 SCREWS: 3M, BRASS, NICKEL PLATED.
ELECTRICAL:
 RATING: 10A, 300V(UL).
MECHANICAL:
 WIRE RANGE: 14-22 AWG.
MOUNTING:
MATERIALS:
 MOUNTING: 2TK2 AND 2TK2D SERIES SNAPTRACK
 (SOLD SEPARATELY).
 ⚠ ALL CONNECTOR/STRAIN RELIEF COMPONENTS TO BE
 SHIPPER LOOSE AND UNASSEMBLED.
 ⚠ CATALOG NUMBER MARKED HERE.
 ⚠ CONTAINS NO TIN-LEAD PLATING.



2M60FCL	1776644-1
2M60FC	3-1437684-3
CATALOG NUMBER	PART NUMBER

THIS DRAWING IS A CONTROLLED DOCUMENT.		DWN M.S. FEHER 02APR2004		Tyco Electronics Corporation	
DIMENSIONS: INCHES		CHK S. YODER 02APR2004		Harrisburg, PA 17105-3608	
TOLERANCES UNLESS OTHERWISE SPECIFIED:		APPV S. YODER 02APR2004		NAME	
0 PLC	± -	PRODUCT SPEC		2M60FC ASSEMBLY	
1 PLC	± .1	APPLICATION SPEC		-	
2 PLC	± .01	SIZE		A1	
3 PLC	± -	CAGE CODE		00779	
4 PLC	± -	DRAWING NO		3-1437684-3	
ANGLES	± -	RESTRICTED TO		-	
MATERIAL	FINISH	WEIGHT		CUSTOMER DRAWING	
		SCALE		NTS	
		SHEET		1 OF 1	
		REV		A	