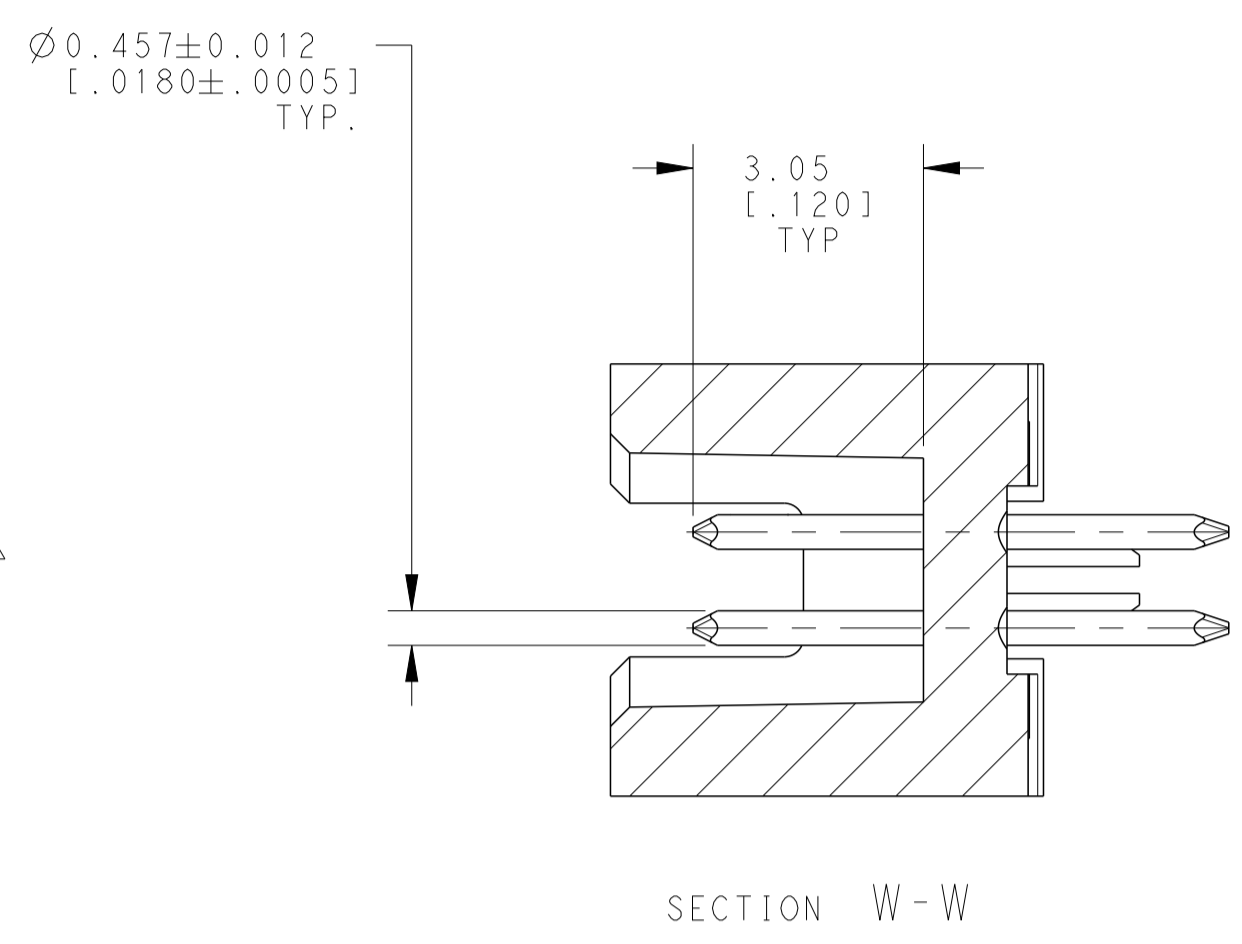
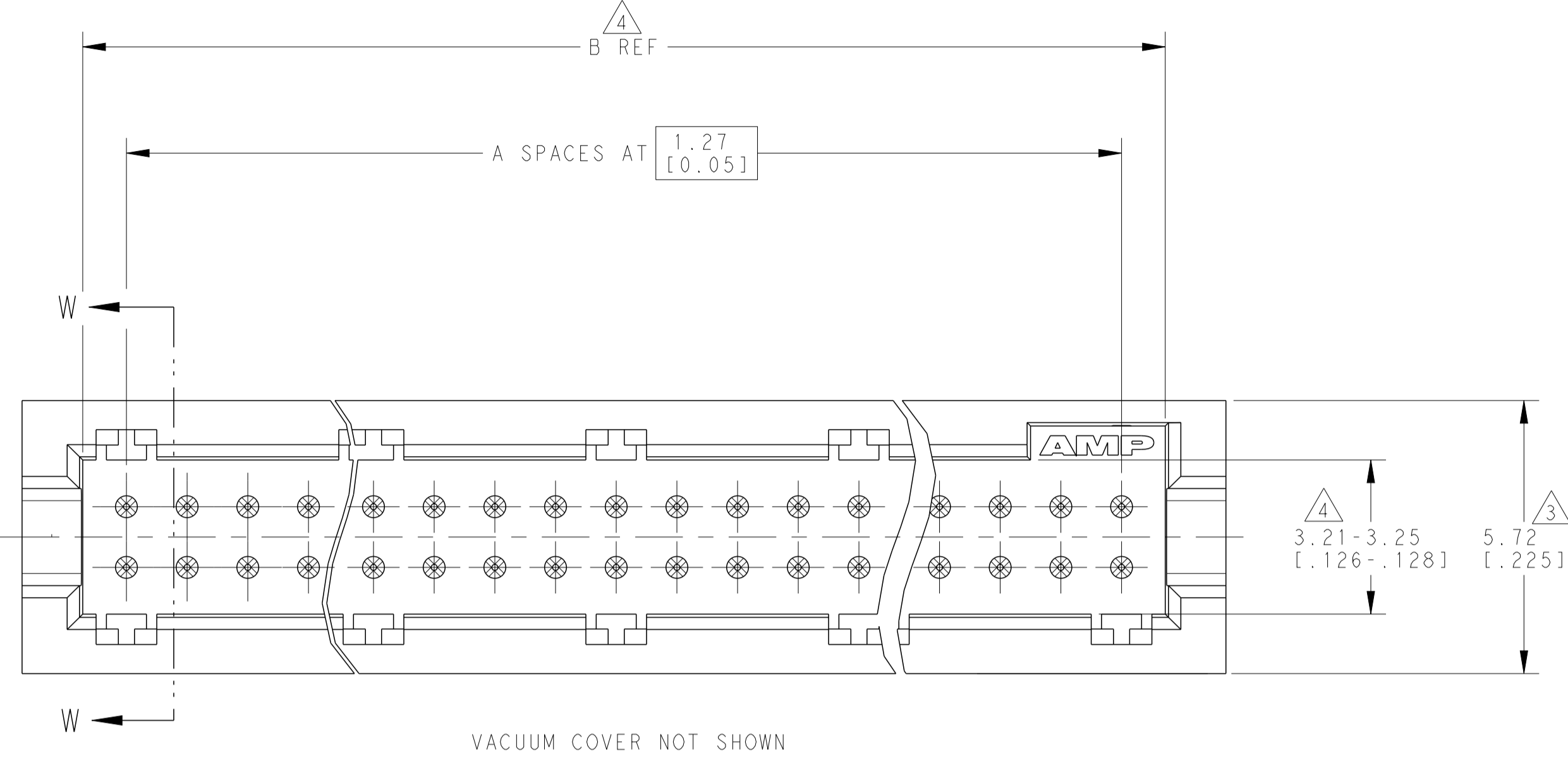
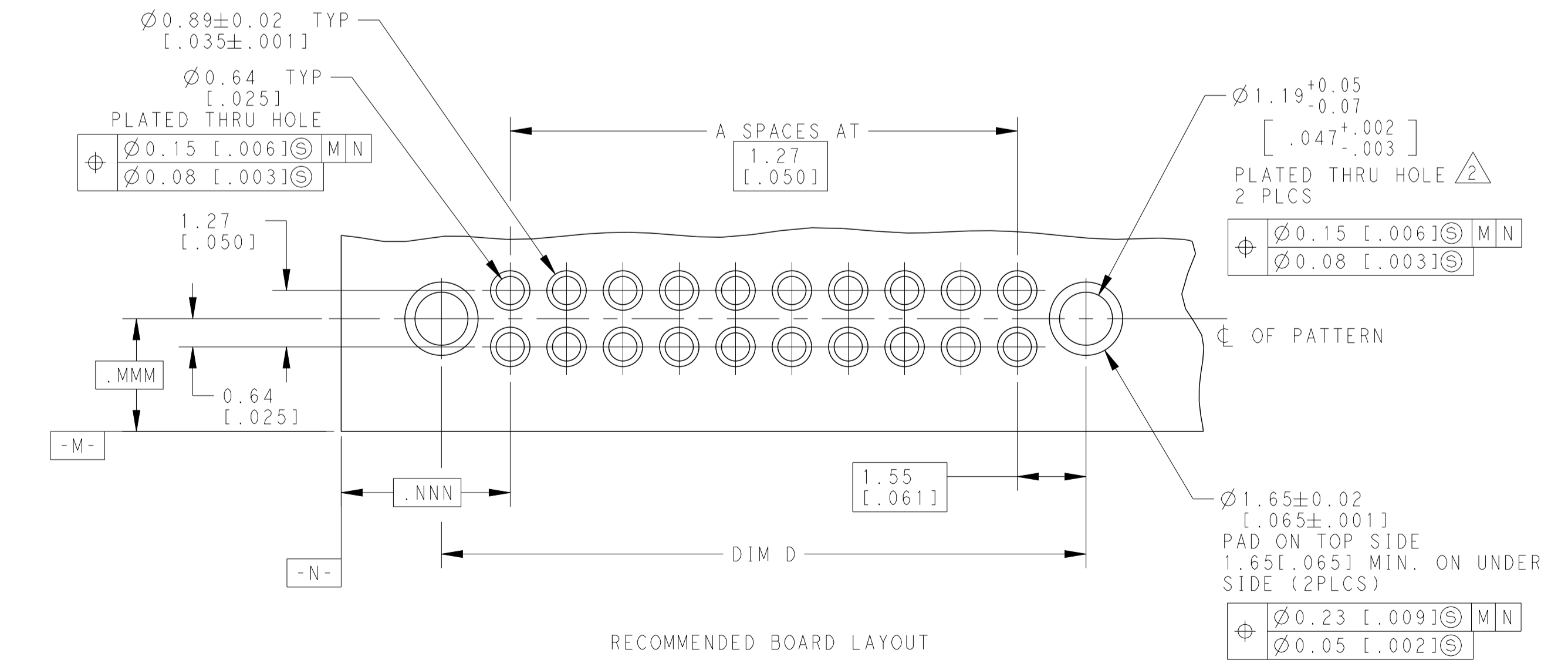
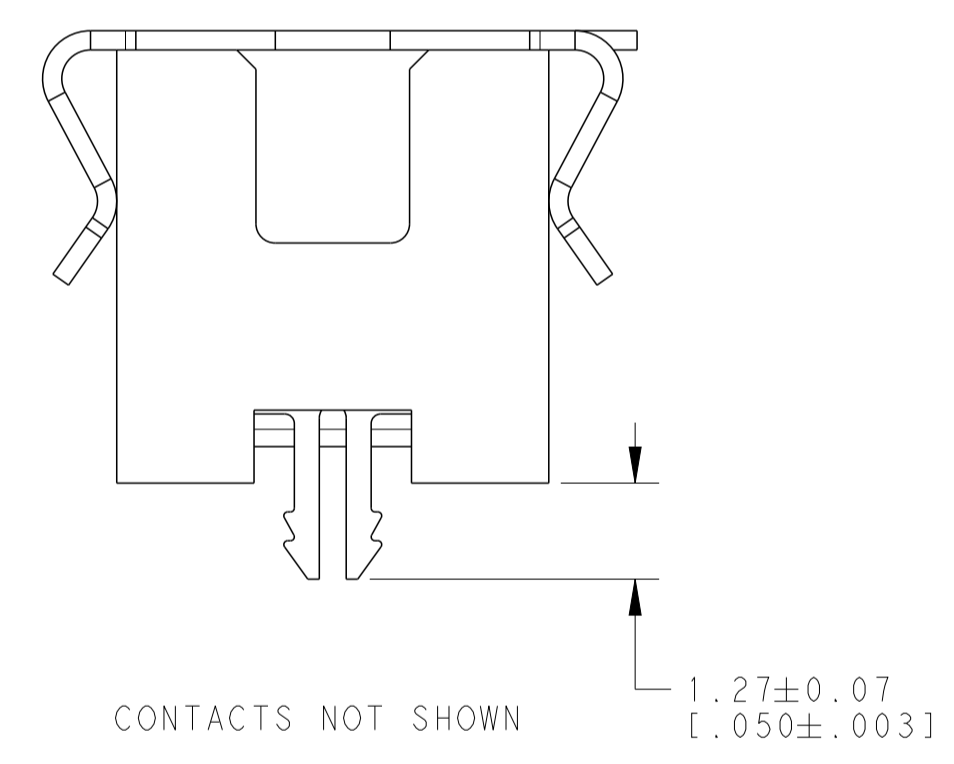
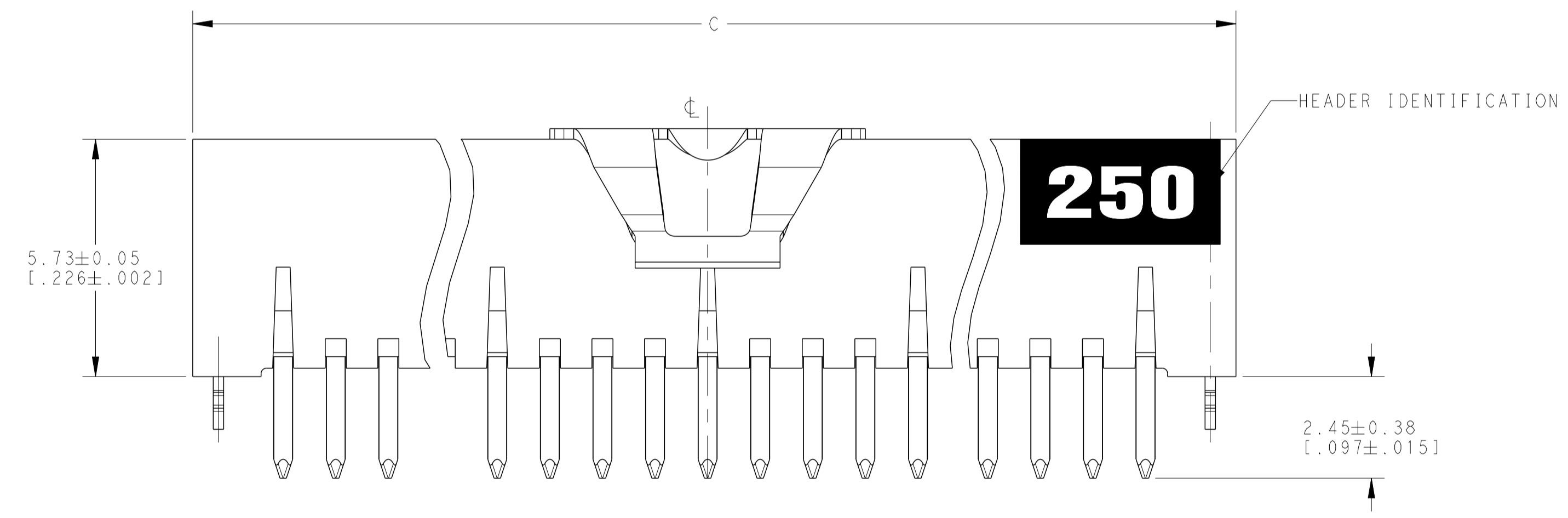


| REVISIONS |     |                 |           |       |
|-----------|-----|-----------------|-----------|-------|
| P         | LTN | DESCRIPTION     | DATE      | APVD  |
| A         |     | REDRAWN IN CREO | 05APR2019 | RS JO |



- 1 0.00076[.000030] GOLD AT POINT OF MEASUREMENT, 0.00051[.000020] MIN AT THE END OF AREA G, (LOCALIZED GOLD PLATE AREA), 0.0038[.000150] TIN-LEAD ON LOCALIZED TIN PLATED AREA, ALL OVER 0.0013[.000050] NICKEL
- 2 USE 1.32±0.002[.052±.001] DRILLED HOLE (#55 DRILL). FINISH TO BE TIN OVER 0.02[.001]MIN COPPER.
- 3 DIMENSION APPLIES AT BASE OF SHROUD.
- 4 THE NOTED DIMENSIONS APPLY AT THE MATING FACE OF THE HOUSING.
- 5 0.0038 [0.000150] TIN LEAD ON HOLD DOWN, ALL OVER 0.0013 [0.000050] NICKEL.
- 6. PACKAGED IN TUBES
- 7 DIMENSIONS NOTED APPLY FROM THE BASIC DIMENSION LINE (NOT THE CIRCUIT CAVITY CENTER LINE) TO THE SURFACE INDICATED.
- 8. IF PLANNING TO USE MORE THAN ONE MATING PAIR OF CONNECTORS TO INTERCONNECT 2 BOARDS, PLEASE REFER TO THE SPACING PARAGRAPH IN APPLICATION SPEC, #114-7010
- 9. PACKAGED IN EIA 481 TAPE AND REEL. SEE TABLE FOR TAPE WIDTHS.
- 10 5.5 [1.216] MIN TARGET AREA FOR VACCUM PICK-UP
- 11 HOUSING: LCP,COLOR: BLACK  
POST: PHOSPHOR BRONZE  
HOLD DOWN: COPPER ALLOY  
VACCUM COVER: ALUMINIUM
- 12 0.00076[.000030] GOLD AT POINT OF MEASUREMENT, 0.00051[.000020] MIN AT THE END POINTS OF AREA G, (LOCALIZED GOLD PLATE AREA), 0.0038[.000150] TIN ON LOCALIZED TIN PLATED AREA, ALL OVER 0.00127[.000050] NICKEL.
- 13 USE 1.55±.02 [1.0610±.0010] DRILLED HOLE (1.55mm DRILL). WITH 0.02(.001) MIN COPPER.
- 14 0.00381 (.000150) TIN ON HOLDDOWN, ALL OVER 0.00127 (.000050) NICKEL



| FINISH | TAPE WIDTH | D             |                |                | A              | NUMBER OF POSITIONS | PART NUMBER |             |
|--------|------------|---------------|----------------|----------------|----------------|---------------------|-------------|-------------|
|        |            | 88mm          | 72mm           | 56mm           |                |                     |             |             |
| 1,2,14 | 88mm       | 65.33 [2.572] | 66.59 [2.622]  | 64.05 [2.522]  | 49             | 100                 | 6-2267258-0 |             |
|        | 88mm       | 58.98 [2.322] | 60.248 [2.372] | 57.708 [2.272] | 44             | 90                  | 5-2267258-9 |             |
|        | 72mm       | 52.63 [2.072] | 53.89 [2.122]  | 51.35 [2.022]  | 39             | 80                  | 5-2267258-8 |             |
|        | 72mm       | 46.28 [1.822] | 47.54 [1.872]  | 45.00 [1.772]  | 34             | 70                  | 5-2267258-7 |             |
|        | 56mm       | 39.93 [1.572] | 41.19 [1.622]  | 38.65 [1.522]  | 29             | 60                  | 5-2267258-6 |             |
|        | 56mm       | 33.58 [1.322] | 34.84 [1.372]  | 32.30 [1.272]  | 24             | 50                  | 5-2267258-5 |             |
|        | 44mm       | 27.23 [1.072] | 28.49 [1.122]  | 25.95 [1.022]  | 19             | 40                  | 5-2267258-4 |             |
|        | 32mm       | 20.88 [1.822] | 22.14 [1.872]  | 19.60 [1.772]  | 14             | 30                  | 5-2267258-3 |             |
|        | 24mm       | 14.53 [1.572] | 15.79 [1.622]  | 13.25 [1.522]  | 9              | 20                  | 5-2267258-2 |             |
|        | 24mm       | 8.18 [0.322]  | 9.44 [1.372]   | 6.90 [1.272]   | 4              | 10                  | 5-2267258-1 |             |
|        | 1,5        | 88mm          | 65.33 [2.572]  | 66.59 [2.622]  | 64.05 [2.522]  | 49                  | 100         | 1-2267258-0 |
|        |            | 88mm          | 58.98 [2.322]  | 60.248 [2.372] | 57.708 [2.272] | 44                  | 90          | 2267258-9   |
| 72mm   |            | 52.63 [2.072] | 53.89 [2.122]  | 51.35 [2.022]  | 39             | 80                  | 2267258-8   |             |
| 72mm   |            | 46.28 [1.822] | 47.54 [1.872]  | 45.00 [1.772]  | 34             | 70                  | 2267258-7   |             |
| 56mm   |            | 39.93 [1.572] | 41.19 [1.622]  | 38.65 [1.522]  | 29             | 60                  | 2267258-6   |             |
| 56mm   |            | 33.58 [1.322] | 34.84 [1.372]  | 32.30 [1.272]  | 24             | 50                  | 2267258-5   |             |
| 44mm   |            | 27.23 [1.072] | 28.49 [1.122]  | 25.95 [1.022]  | 19             | 40                  | 2267258-4   |             |
| 32mm   |            | 20.88 [1.822] | 22.14 [1.872]  | 19.60 [1.772]  | 14             | 30                  | 2267258-3   |             |
| 24mm   |            | 14.53 [1.572] | 15.79 [1.622]  | 13.25 [1.522]  | 9              | 20                  | 2267258-2   |             |
| 24mm   |            | 8.18 [0.322]  | 9.44 [1.372]   | 6.90 [1.272]   | 4              | 10                  | 2267258-1   |             |

THIS DRAWING IS A CONTROLLED DOCUMENT. DWG: RAVI.S 05APR2019  
 CHK: J. OLSON 05APR2019  
 APVD: J. OLSON 05APR2019

TE Connectivity

HDR ASSY, THROUGH HOLE  
 AMPMODU 50/50 GRID  
 (6.35 [1.250] MATED HEIGHT)

SCALE 10:1 SHEET 1 OF 1 REV A