



5555 N. Elston Ave. • Chicago, Illinois 60630
Phone (312) SW2-2700 • TWX: 910-221-5199

DW "Multi-Switch"® Switch Specifications

U. S. Patent 3,517,140

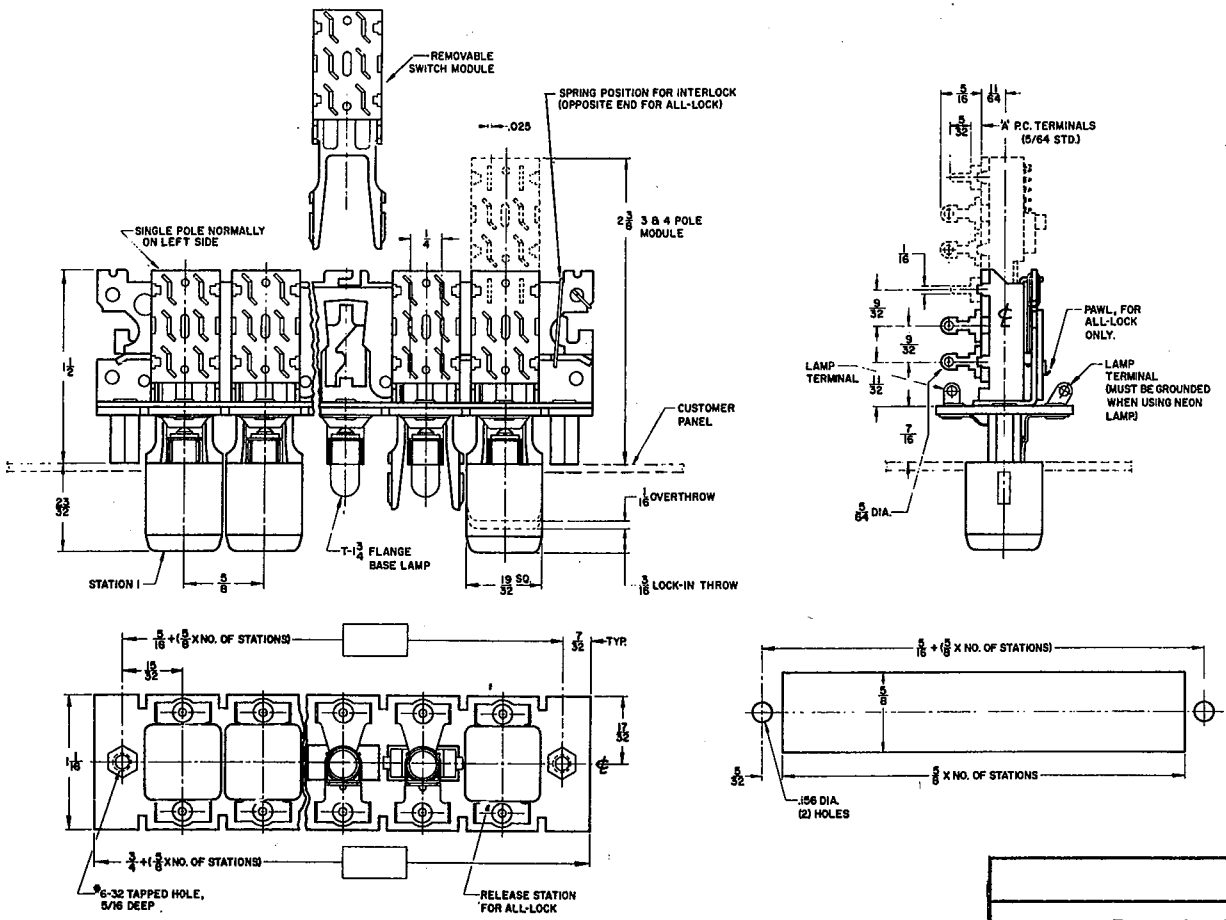
SERIES 66000, 67000

THIS PRINT DESCRIBES A DESIGN CONSIDERED PROPRIETARY IN NATURE, DEVELOPED AND MANUFACTURED BY SWITCHCRAFT, INC., AND IS RELEASED ON A CONFIDENTIAL BASIS FOR IDENTIFICATION PURPOSES ONLY.
WE RESERVE THE RIGHT TO CHANGE THE SPECIFICATIONS AND/OR PART NUMBERS CONTAINED HEREIN WHEN CIRCUMSTANCES MAKE IT NECESSARY.

CIRCUITS																		
PUSHBUTTON COLOR																		
ENGRAVING OR HOT STAMPING (Indicate Orientation)																		
FOR SWITCHCRAFT USE ONLY	REAR SECTION																	
	FRONT SECTION																	
STATION NO.	1	2	3	4	5	6	7	8	9	10	11	12	13	14	15	16	17	18

FOR COMPLETE DATA, REFER TO SWITCHCRAFT DW "MULTI-SWITCH"® SWITCH CATALOG

- FRAME:** Series 66000 Series 67000
(Less Lamp Socket Assem.)
- NO. OF STATIONS:** (Including Release Station) _____
- SWITCH MOUNTING POSITION:**
Horizontal Vertical
- MECHANICAL FUNCTION:**
Interlock (to 12 Sta.) Push-Lock/Push-Release
Non-Lock Push-Lock/Push-Release With common release
All-Lock (to 12 Sta.) (to 12 Sta.)
Note: When combined mechanical functions are required, give details in "NOTE" column.
- LOCK-OUT FUNCTION:**
With Without
- SPECIAL FEATURES:**
SOLENOID RELEASE—115 VAC, 60 Hz (Std.)
Other AC Source (Specify) _____
DC Source (Specify) _____
GANGED ASSEMBLIES—No. of Rows _____
No. of Stations, each Row _____
Twin Row (2 Rows Only, Back-to-Back, Row Centers):
Series 66000... 3/4" std. Series 67000... 1 1/8" std.
Multiple Row (2 or More), Row Centers, 1 3/8" (Std.)
Row Centers, Special, to 3" (Specify) _____
Banking Only (No Interaction Between Rows)
Banking and Coupling (Interaction Between Rows)
BARRIERS: (Series 67000 Only)
Shipped with switch for field installation
Shipped installed on switch (special order)
- PUSHBUTTONS:**
Red Green Blue
White (Std.) Yellow Amber
- LAMPS:** (Series 67000 Only; not furnished unless specified)
28V (P-1593-1) 6V (Low Heat) (P-1593-5)
6V (P-1593-2) 5-6V (P-1890) (Requires T-1 Adapter) _____
- CIRCUIT FORMS:** (Specify Above)
- CONTACT & TERMINAL PLATING:**
Silver (Std.) Other (Specify) _____
- TERMINALS:** Solder Type (Std.)
PC Type (Specify "A" Dim. From Catalog) _____



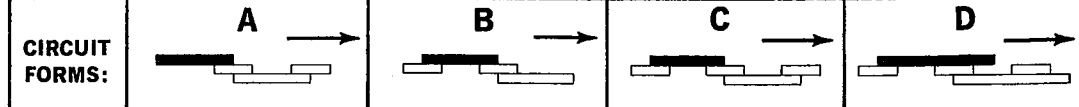
"NOTES" FOR GANGED ASSEMBLY, SPECIAL SWITCH, OR OTHER SPECIAL REQUIREMENTS, INDICATE PANEL ARRANGEMENT, ENVELOPE SIZE, LEGEND HEIGHT, ETC., BELOW.

Area reserved for user notes regarding panel arrangement, envelope size, legend height, and other special requirements for ganged assemblies, special switches, or other specific needs.

GENERAL SPECIFICATIONS

Frame, Latch Bar, Switch Housing, and Mounting Studs—steel with iridescent iridite over cadmium plating per QQ-P-416a.
 Pushbuttons—Molded thermoplastic.
 Pushbutton Actuators—Molded nylon.
 Terminals—Brass, silver plated, ((Gold plated, special order).
 Contactors—Special alloy of spring brass, silver plated, (Gold plated, special order)
 Terminal Board—XXXP paper base phenolic.
 Lamp Socket Board (Series 67000)—XXXP Phenolic.
 Lamp Socket (Series 67000)—Brass & nickel silver, silver plated.

NOTE: RETURN THIS TRANSPARENCY OR 3 COPIES WITH INQUIRY OR ORDER.



REVISIONS:

CUSTOMER		ENG.		DATE	
CUST. NO.		SWITCH-CRAFT PART NO.		SAMPLE NO. XM-	
REF. NO.					