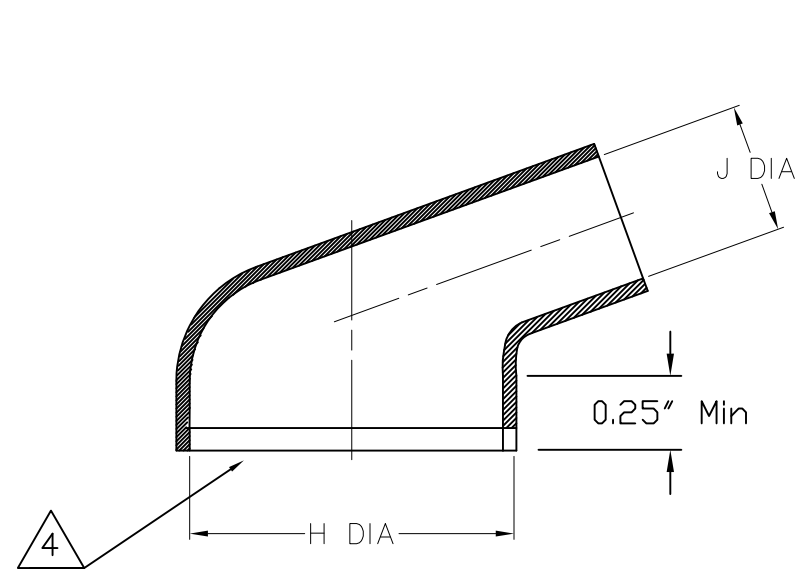


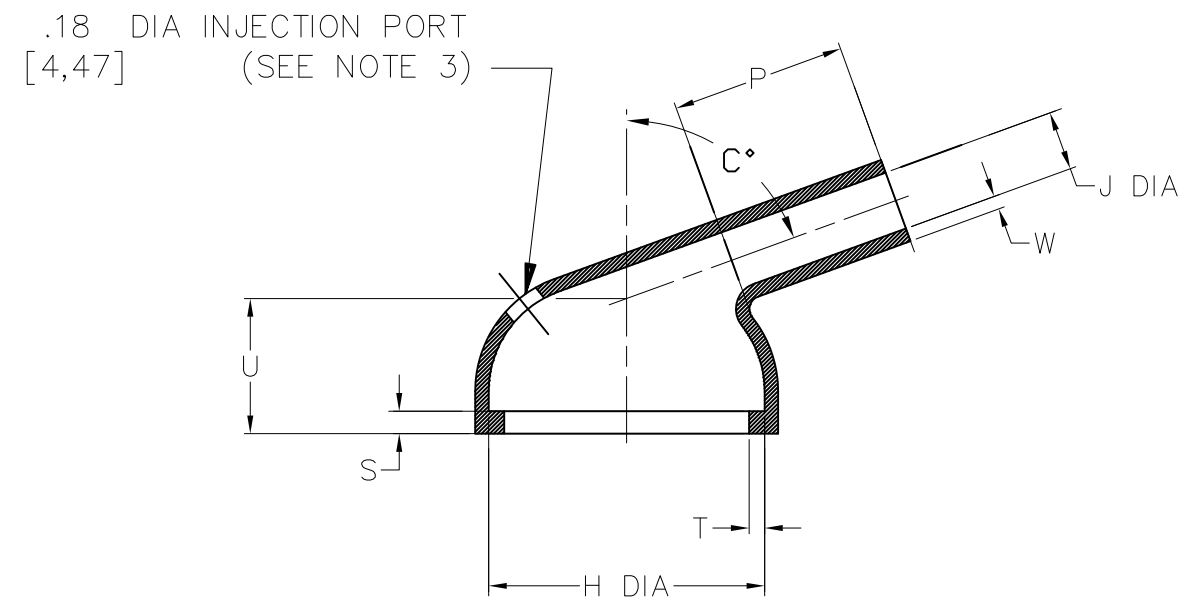
NOTES

1. ALL DIMENSIONS ARE IN  $\frac{\text{INCHES}}{\text{[MILLIMETERS]}}$
2. DIMENSIONS APPEARING IN TABLE ARE AS FOLLOWS:
  - a - AS SUPPLIED
  - b - AFTER UNRESTRICTED RECOVERY
3. INJECTION PORT REQUIRED, WILL BE LOCATED AS SHOWN AND SUPPLIED WITH PLUG 002A011.
4. H END TO BE 'FLAT' AS EXPANDED. WITH 2.5MM TOLERANCE.

DIMENSIONING AND TOLERANCING PER ASME Y14.5M (ISO STANDARDS)		
REVISIONS		
LTR	DESCRIPTION	DATE
B	REVISED PER ECO-12-017886	10/03/2012



AS SUPPLIED



AFTER UNRESTRICTED RECOVERY

PART NUMBER	H		J		P	U	S	T	W	C°
	MIN	MAX	MIN	MAX	±10%	±10%	REF	REF	±20%	±5%
	a	b	a	b	b	b	b	b	b	b
283A100-25-01	$\frac{1.50}{[38,1]}$	$\frac{1.35}{[34,3]}$	$\frac{.60}{[15,2]}$	$\frac{.34}{[8,6]}$	$\frac{.36}{[9,1]}$	$\frac{.60}{[15,2]}$	$\frac{.10}{[2,5]}$	$\frac{.07}{[1,8]}$	$\frac{.06}{[1,5]}$	70°

Raychem Molded Parts  
**CUSTOMER DRAWING**

If this document is printed it becomes uncontrolled. Check for the latest revision

UNLESS OTHERWISE SPECIFIED DIMENSIONS ARE INCHES. METRIC DIMENSIONS ARE IN BRACKETS.

DECIMAL TOLERANCES  
 .XXX ± 0.005 [0.13 mm]  
 .XX ± 0.01 [0.25 mm]  
 .X ± 0.1 [0.50 mm]

ANGLE TOLERANCE  
 .X ± 1 DEG.

DRAWN: MMAZARIEGOS DATE: 09/25/2012

RPN

THIRD ANGLE PROJECTION

© 2012 Tyco Electronics Corporation. All rights reserved.

**TE** TE Connectivity

TITLE: **BOOT, ANGULAR, WITH LIP**

SIZE: B CODE IDENT. NO.: 06090 DWG. NO.: 283A100-25-01

DO NOT SCALE THIS DRAWING SHEET 1 OF 1

MATERIAL DASH NO.	MATERIAL DESCRIPTION	RT SPEC	COATING NO.	COATING SPEC
-25	ELASTOMER, FLUID RESISTANT	RT-1325	N/A	N/A