

XLM-12.1-M5

Industrial LCD Monitors (Touch Optional)

Since 1994 EarthLCD has supplied LCD monitor solutions for industrial machines, CRT replacement, point-of-sale and medical equipment. Available interfaces include NTSC, HDMI and VGA. Touchscreens are available in resistive and capacitive touch interfaces. By using our open frame, our LCD expertise has been honed to help customers meet their specific needs.

Earth Computer Technologies, Inc is a maker of industrial LCDs and embedded products including the award-winning ezLCD technology from EarthLCD, the recognized leader in smart touch LCDs.



12.1" Industrial LCD Monitor

Commercial and industrial applications include: ATM machines, industrial equipment, instrumentation, kiosks, military, medical, arcade games, marine, security, test equipment, gaming, or any application requiring a color LCD display.

Features:

- 12.1" XGA LCD panel with LED backlight
- HDMI, VGA and NTSC/PAL video inputs
- Commercial and industrial applications
- -30°C ~ +80°C operating temperature range
- High contrast ratio: 700:1 typical
- 500 cd/m² Brightness typical
- 20,000 hours LED life typical
- OSD Controls: contrast, phase, clock, color, H&V position, auto-tune, recall
- VESA and multiple mounting hole options
- Base stand with tilt included
- +12v power supply included

Options (sold separately):

- USB four wire resistive touchscreen
- HDMI or VGA Cable

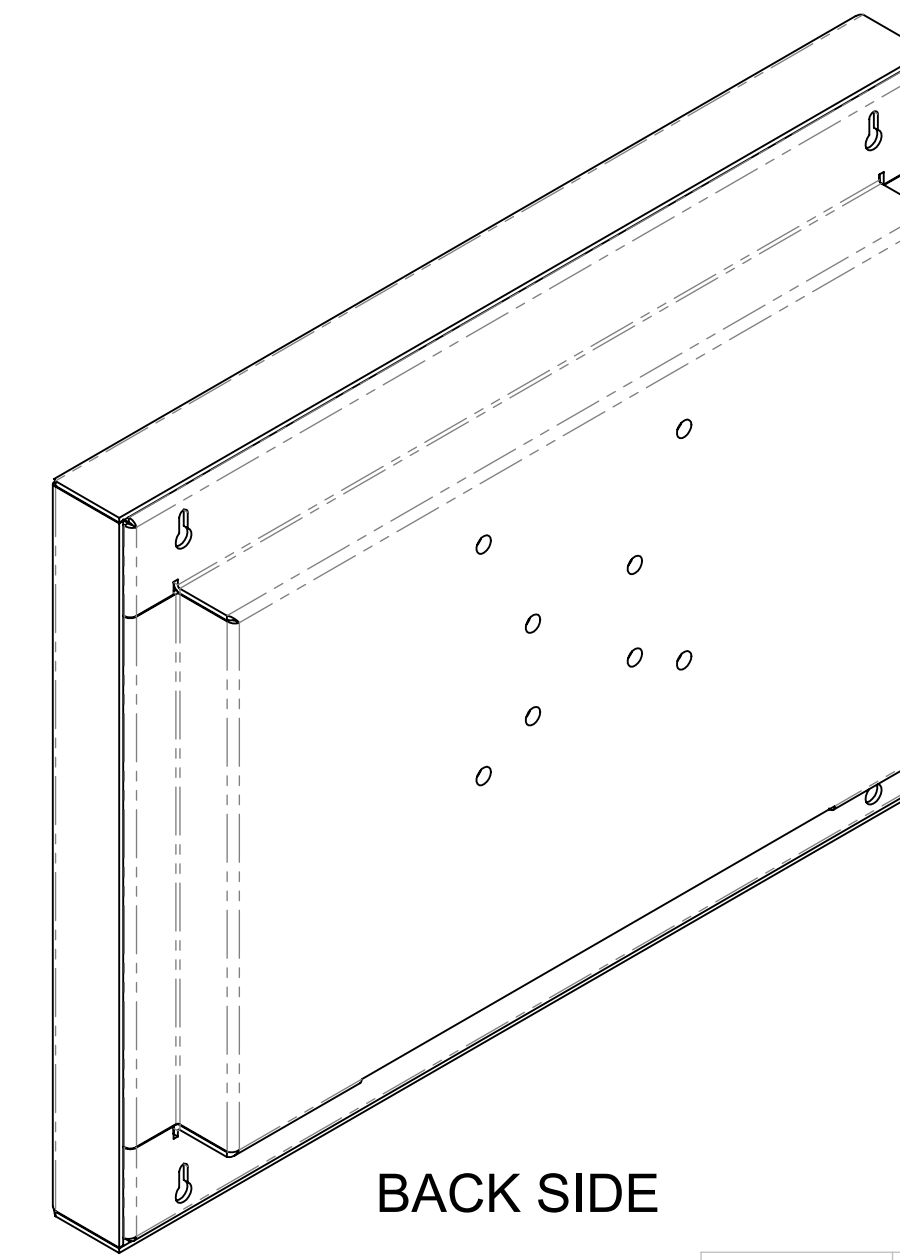
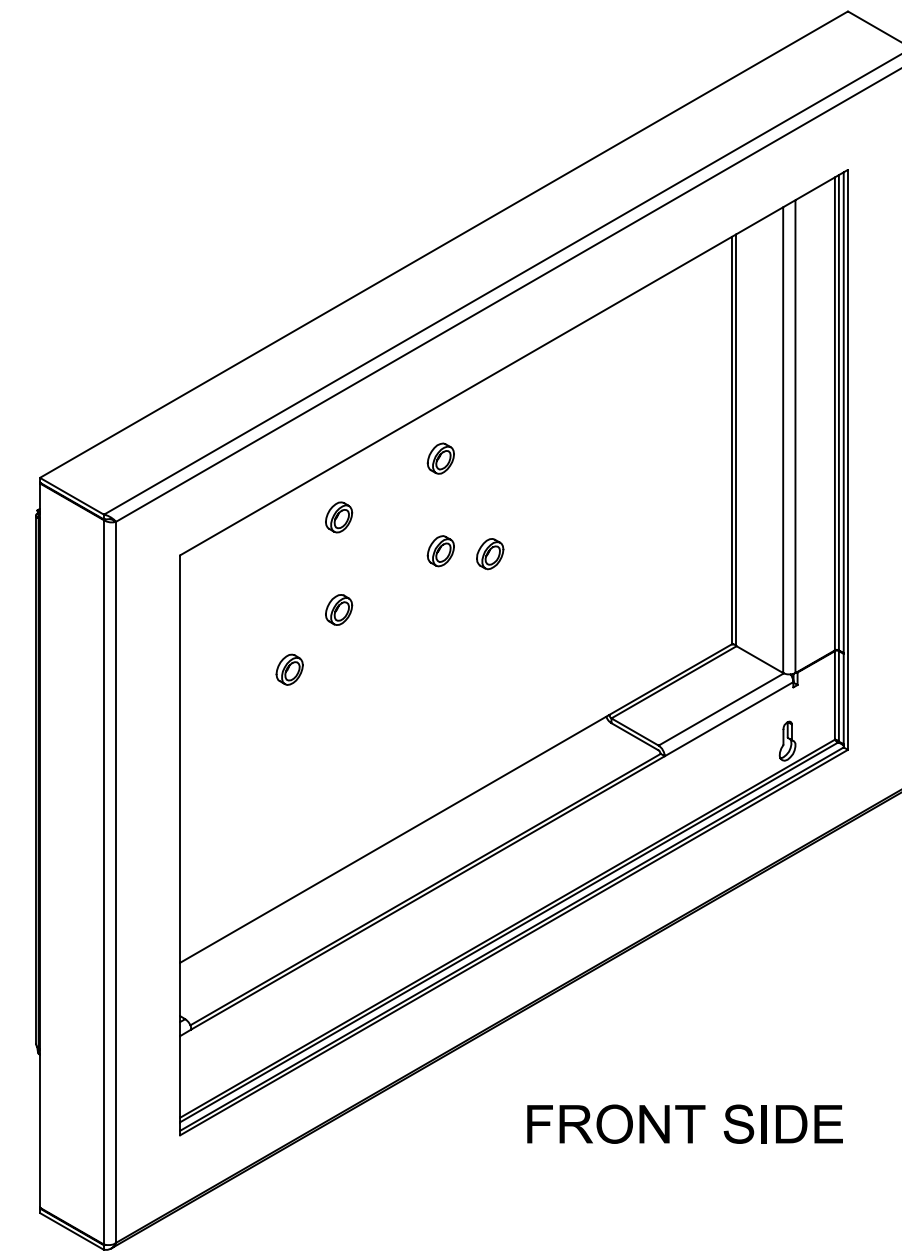
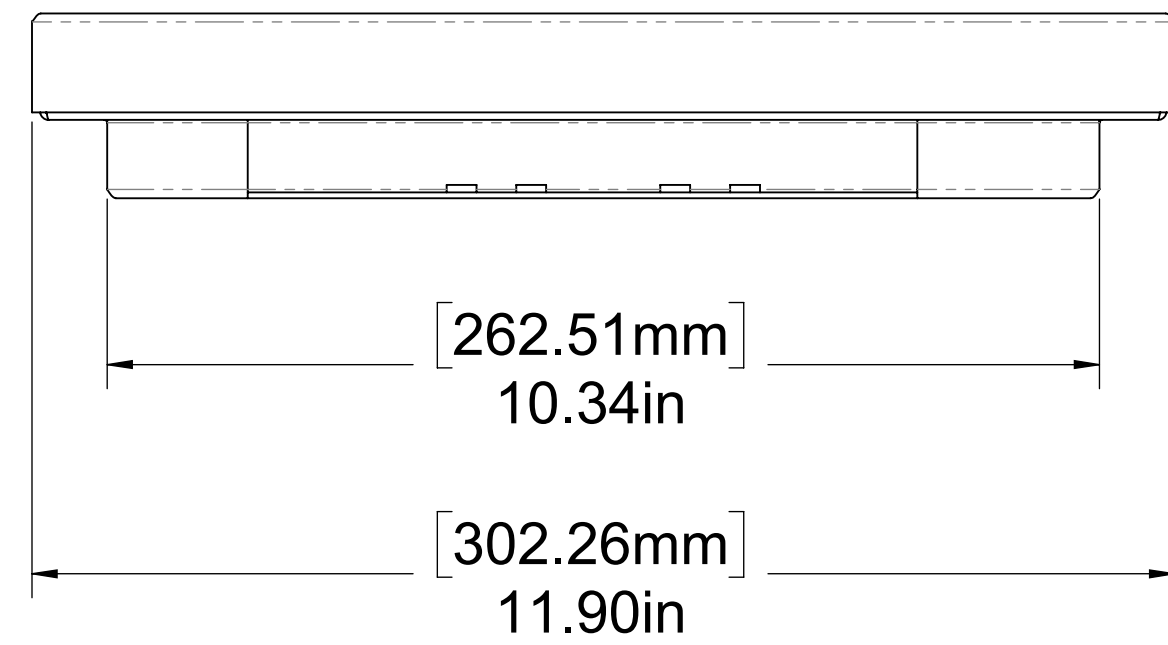
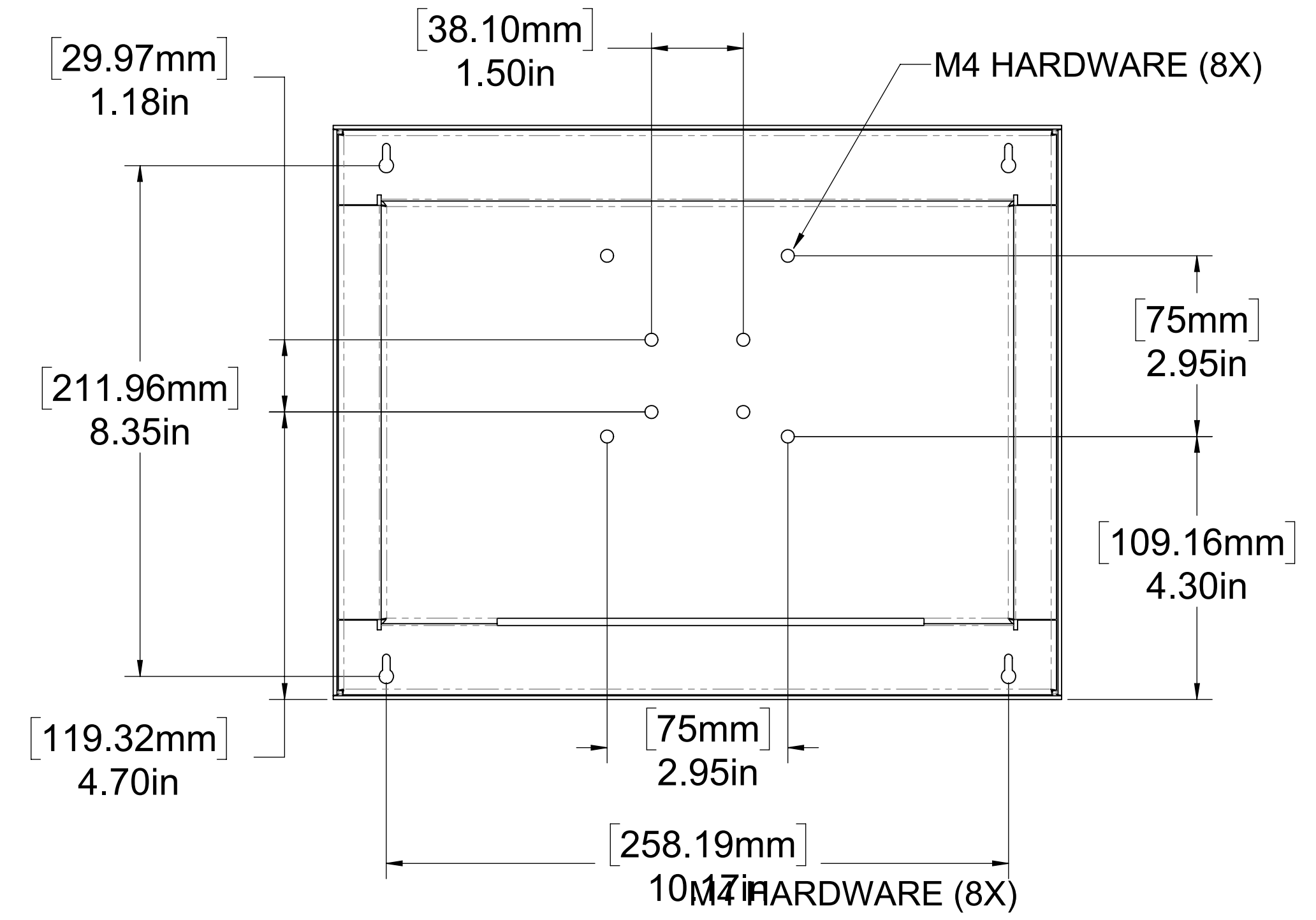
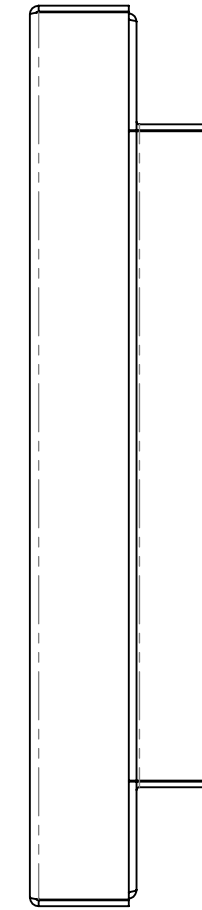
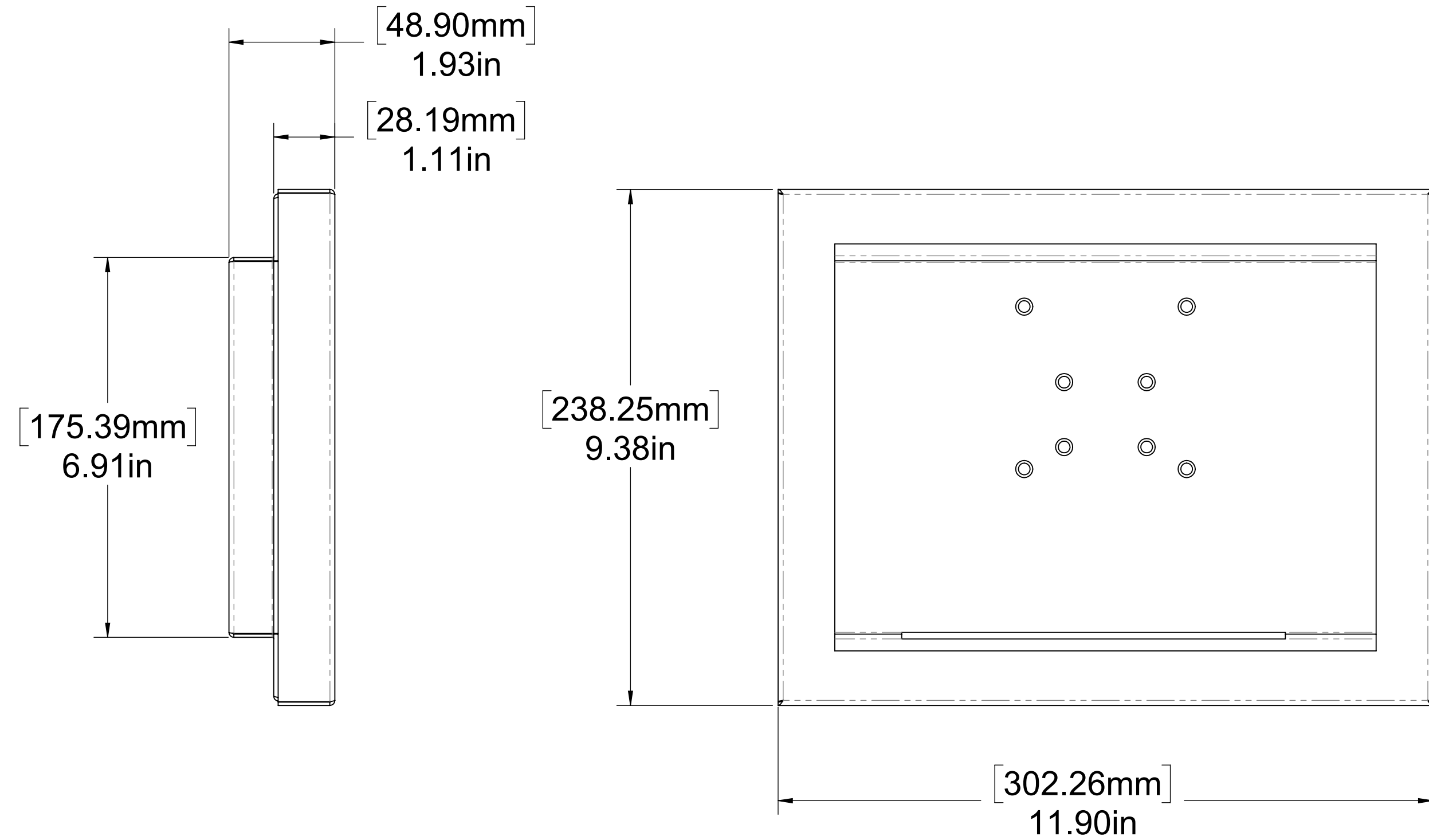
Product Specifications:

- Screen Size (Diagonal): 12.1"
- Display Technology: TFT
- Resolution: 1024 x 768 (XGA)
- Brightness: 500 Nits
- Interface Input Modes: VGA
- Colors: 262,144
- Active Area (mm): 245.76 x 184.32
- Contrast Ratio: 700:1
- Horizontal Viewing Angle: 80° L/R
- Vertical Viewing Angle: 80° U/D
- Operating Temperature: -30°C to 80°C
- Storage Temperature: -30°C to 80°C
- Input Voltage: +12V DC
- Power Consumption: 950 mA
- Display Backlight: LED
- RoHS Compliant: Yes
- Outline Dimensions (mm): 238.25 x 302.26
- Outline Dimensions (in): 11.90 x 9.38
- Cable Sold Separately
- Touch Screen Version Available: Yes
- Non-Touch: XLM-12.1-M5
- Resistive Touch: XLM-12.1-M5-RT-USB

GENERAL NOTES:

/1/ XLM-12.1M5 DATASHEET REFERENCE

REVISIONS				
ZONE	REV.	DESCRIPTION	DATE	APPROVED
	X1	XLM-12.1M5 DATASHEET REFERENCE	2020-06-24	



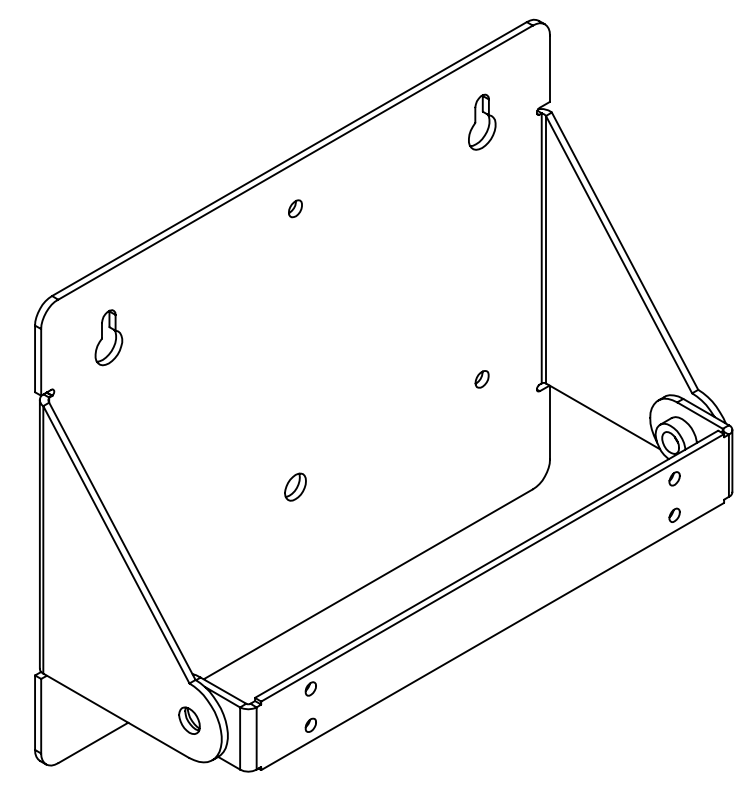
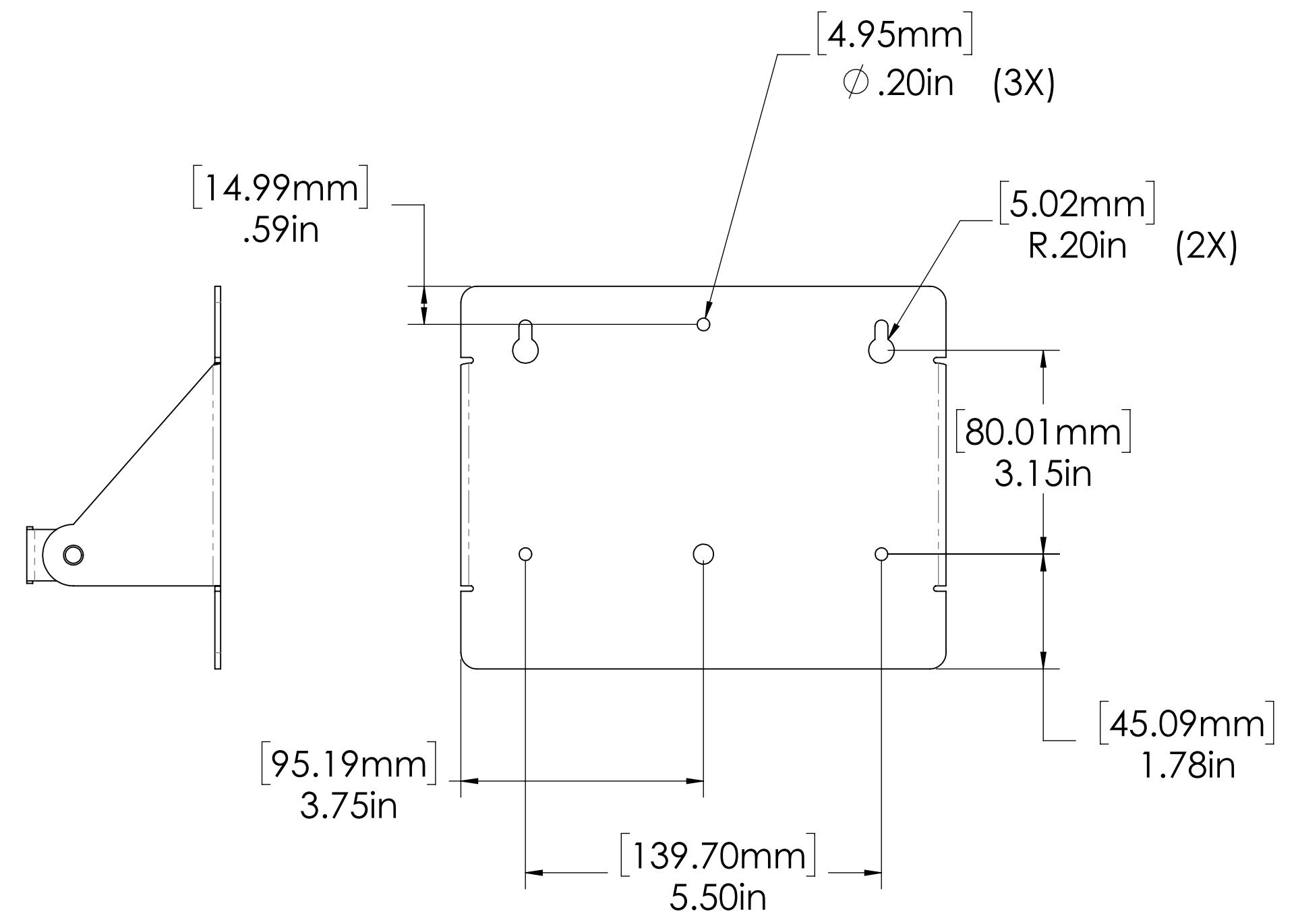
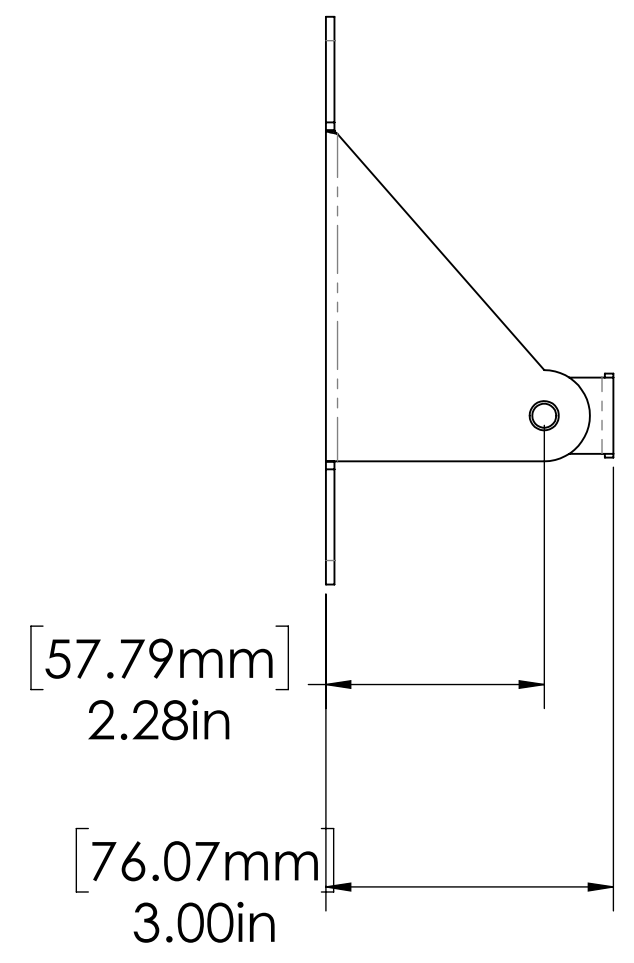
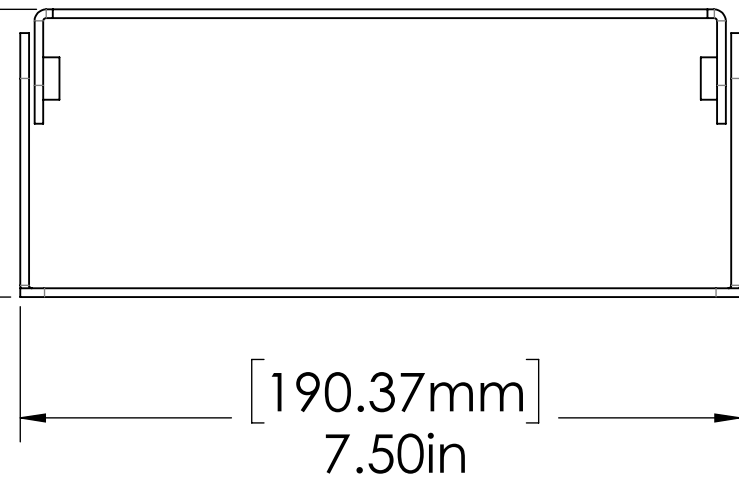
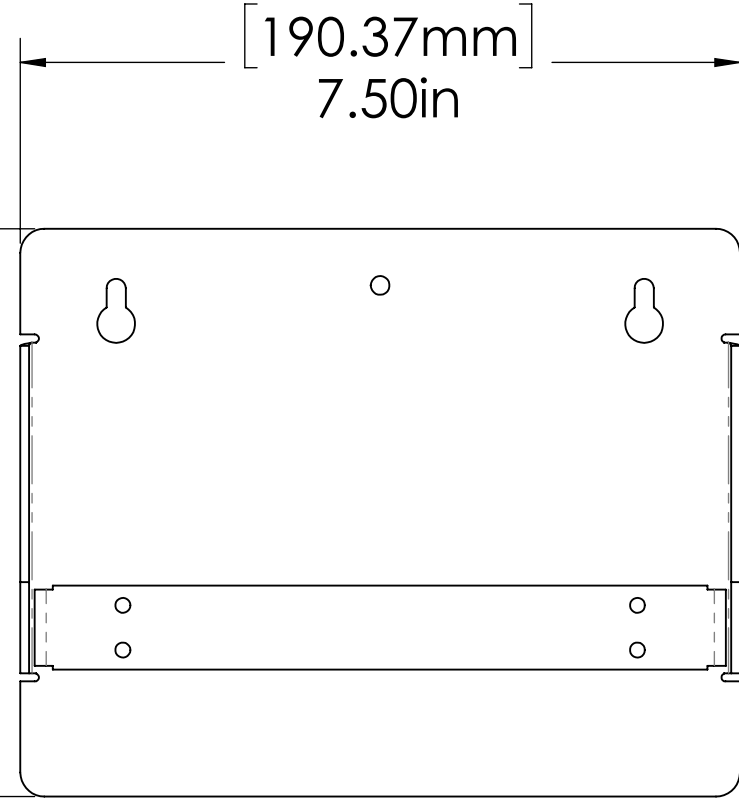
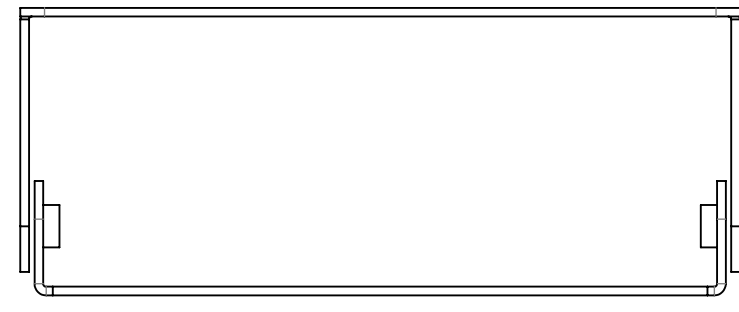
THIRD ANGLE PROJECTION

PROPRIETARY AND CONFIDENTIAL
THE INFORMATION CONTAINED IN THIS DRAWING IS THE SOLE PROPERTY OF EARTH LCD. ANY REPRODUCTION IN PART OR AS A WHOLE WITHOUT THE WRITTEN PERMISSION OF EARTH LCD IS PROHIBITED.

UNLESS OTHERWISE SPECIFIED:		DRAWN	NAME	DATE	EarthLCD TITLE: XLM-12.1-M5
DIMENSIONS ARE IN INCHES		CHECKED	JTU	2020-06-24	
TOLERANCES:		ENG APPR:			
FRACTIONAL ± 1/32"		MFG APPR:			
ANGULAR BEND ± 1/2°		Q.A.			SIZE PART NO: REV D XLM-12.1_M5 X1
TWO PLACE DECIMAL ±0.01		DRAWING NO:			
THREE PLACE DECIMAL ±0.005		MATERIAL			SCALE: 1:2 WEIGHT: SHEET 1 OF 1
INTERPRET GEOMETRIC TOLERANCING PER:		FINISH			
SEE NOTES		APPLICATION			
NEXT ASSY	USED ON				

GENERAL NOTES:
 /1/ TILT STAND DATASHEET.

REVISIONS				
ZONE	REV.	DESCRIPTION	DATE	APPROVED
	X1	TILT STAND	2020-06-25	



THIRD ANGLE PROJECTION <small>PROPRIETARY AND CONFIDENTIAL</small> <small>THE INFORMATION CONTAINED IN THIS DRAWING IS THE SOLE PROPERTY OF EARTH LCD. ANY REPRODUCTION IN PART OR AS A WHOLE WITHOUT THE WRITTEN PERMISSION OF EARTH LCD IS PROHIBITED.</small>			<small>UNLESS OTHERWISE SPECIFIED:</small> <small>DIMENSIONS ARE IN INCHES</small> <small>TOLERANCES:</small> <small>FRACTIONAL ±</small> <small>ANGULAR: BEND ± 1/2°</small> <small>TWO PLACE DECIMAL ±0.01</small> <small>THREE PLACE DECIMAL ±0.005</small>	<small>DRAWN</small> <small>CHECKED</small> <small>ENG APPR.</small> <small>MFG APPR.</small> <small>Q.A.</small> <small>DRAWING NO:</small>	<small>NAME</small> <small>DATE</small>	EarthLCD <small>TITLE:</small> TILT STAND <small>SIZE</small> C <small>PART NO:</small> TILT STAND <small>REV</small> X1 <small>SCALE: 1:2</small> <small>WEIGHT:</small> <small>SHEET 1 OF 1</small>
		TC_PROG_2020_006	<small>INTERPRET GEOMETRIC TOLERANCING PER:</small> <small>MATERIAL</small> <small>SEE MATERIAL</small> <small>FINISH</small> <small>SEE MATERIAL</small>	<small>DRAWN</small> JYU <small>DATE</small> 2020-06-25		
			<small>APPLICATION</small> <small>DO NOT SCALE DRAWING</small>	<small>TILT_STAND_ASY_X1</small>		