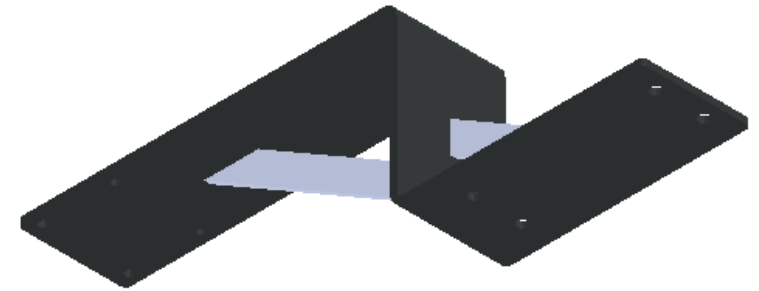
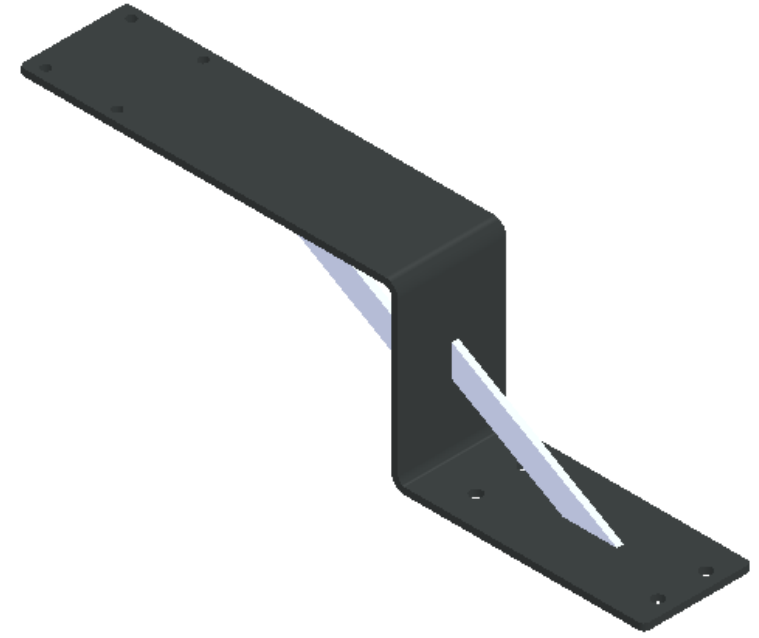
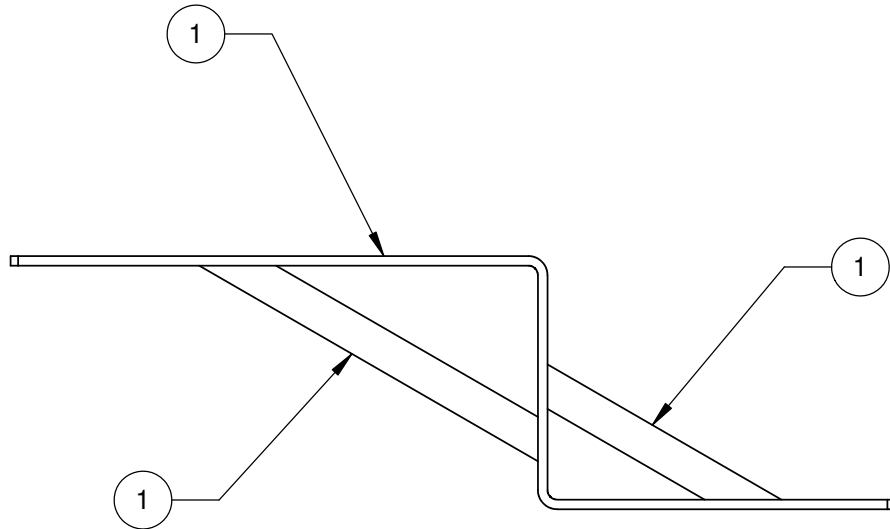
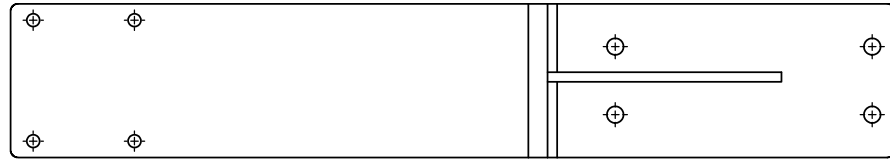


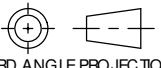


© 2016 MURRPLASTIK SYSTEMS, INC. THIS DOCUMENT IS THE SOLE AND EXCLUSIVE PROPERTY OF MURRPLASTIK SYSTEMS, INC. THE DOCUMENT AND ANY INFORMATION CONTAINED HEREIN MAY NOT BE COPIED, REPRODUCED OR USED IN ANY MANNER WITHOUT THE EXPRESS WRITTEN CONSENT OF MURRPLASTIK SYSTEMS, INC.



ITEM NO.	PART NUMBER	DESCRIPTION	QTY.
1	83800023-C	GUSSET, LONG	1
2	83800023-D	GUSSET, SHORT	1
3	83800023	BENT PLATE	1

UNLESS OTHERWISE SPECIFIED DIMENSIONS ARE IN MM TOLERANCES ARE: DECIMALS ANGLES X ± .5 ± 1° .X ± .25 .XX ± .125	MATERIAL: 1/4" HRS	  Murrplastik Systems, Inc. 1175 US Highway 50 Milford, OH 45150 513-201-3069
	FINISH: PAINT, BLACK	
 THIRD ANGLE PROJECTION	SCALE 1:5	TITLE 83800023 WELDMENT
	APPROVALS	DATE
DO NOT SCALE DRAWING	DRAWN MM 6/26/18	SIZE DWG. NO. A3 83800023 REV 1
	CHECKED RH 6/26/18	REV 1

ECN	REV.	DESCRIPTION	DATE	CHG. BY