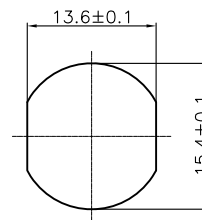
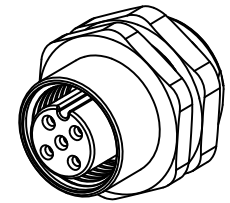


section A-A



PG9 Recommended
Panel CUT-Out
Thickness:4.0mm



Specifications:
 Current Rating:5A AC/DC
 Voltage Rating:60V AC/DC
 Contact Resistance:5m ohm. Max.
 Insulation Resistance:100M ohm. Min.
 Withstanding Voltage:500V AC/Minute
 Waterproof rate:IP68
 Operating Temperature Range:-40°C ~ +100°C
 Material and Finish
 See Table

PIN ASSIGNMENTS FRONT VIEW

A CODING	3Pin	4Pin	5Pin	8Pin	12Pin

ITEM	DESCRIPTION	MATERIAL	REMARK	Q'TY
1	Insulator	Nylon	UL94V-0 Black	1
2	Terminal	Copper Alloy	Gold Plated 3u"	3~8
3	Shell	Copper Alloy	Nickel Plated 60u"	1
4	Seal ring	Silica Gel	Red	2
5	Nut	Copper Alloy	PG9 Nickel Plated 60u"	1

RoHS Compliant

				DRAWN:	GENERAL TOLERANCE: .X=±0.30 .XX=±0.2	CnC Tech Industrial Cable and Connector Technology	
				CHECKED:	UNIT: MM		DESCRIPTION: M12 A CODE SOCKET SOLDER TYPE
				APPROVAL:	SCALE: 1:1	PART NO:	A4
REV	DATE	FILE	BY		SHEET: 1 / 1	11072F-XX-2-1-1	
					PROJECTION:		