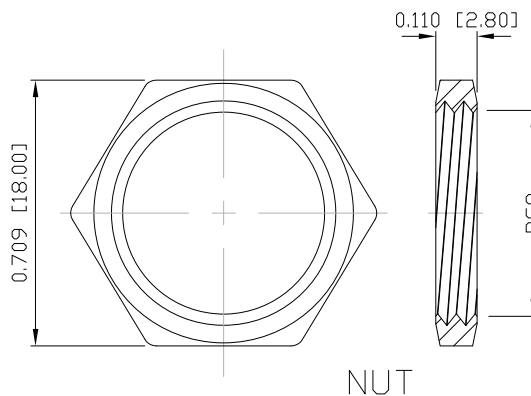
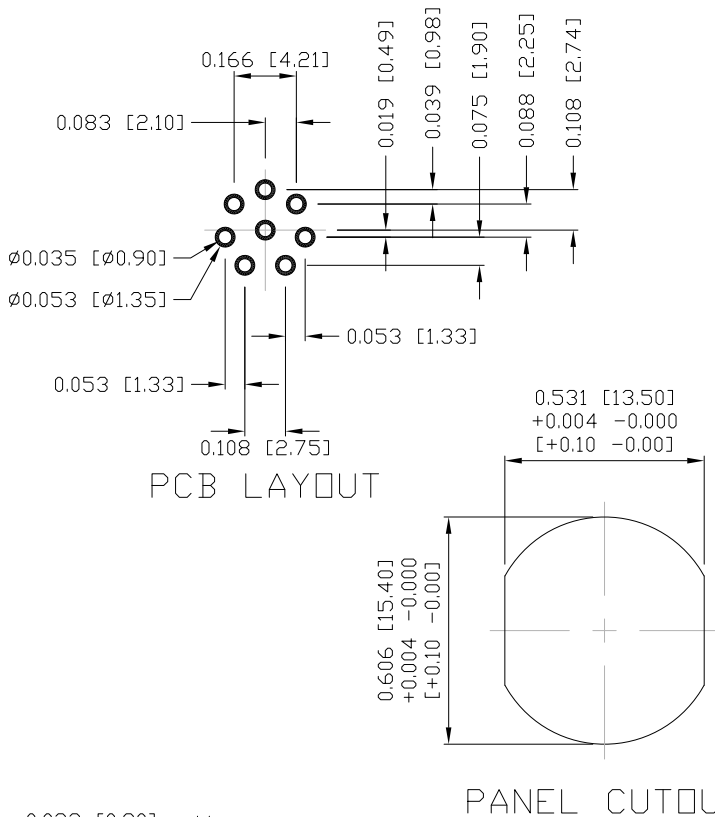


DESCRIPTION: M12 MALE - BOARD MOUNT - 8 POS.



NOTE:

MATERIAL

HOUSING:  
CONTACT:  
SHELL  
NUT:  
O-RING:

PBT UL94V-0, BLACK  
BRASS  
BRASS  
BRASS  
EPDM, BLACK

FINISH

CONTACT:

GOLD PLATED  
OVER 50u" NICKEL  
NICKEL PLATED  
NICKEL PLATED

SHELL:  
NUT

ELECTRICAL:

RATED CURRENT:  
RATED VOLTAGE:  
INSULATION RESISTANCE:  
CONTACT RESISTANCE:  
WATER PROOF:

2A  
30V  
100 MOhms MIN.  
10 mOhms MAX.  
IP67

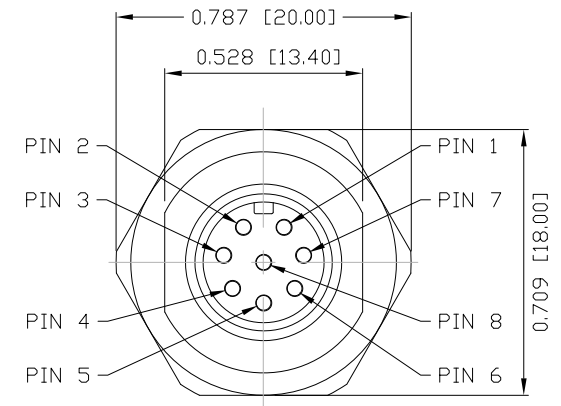
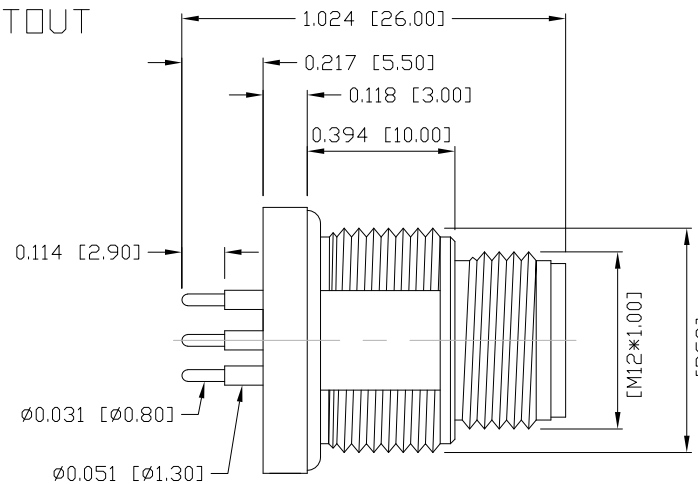
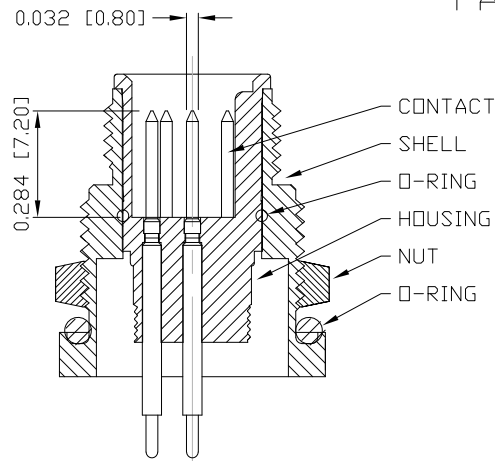
ENVIRONMENT:

OPERATION TEMPERATURE: -40°C TO +85°C

860-008-113R00Y

3 = BRASS/NICKEL SHELL & NUT  
S = STAINLESS STEEL SHELL & NUT

1 = GOLD FLASH  
4 = 10u" GOLD



RoHS COMPLIANT

UNITS = INCHES [MM]

DO NOT SCALE FROM DRAWING



THESE DRAWINGS AND SPECIFICATIONS ARE THE PROPERTY OF NorComp AND SHALL NOT BE REPRODUCED, COPIED OR USED AS THE BASIS FOR THE MANUFACTURE OR SALE OF APPARATUS WITHOUT WRITTEN PERMISSION.

DRAWN:

M. SIGMON

DATE:

09-05-14

NorComp

SCALE:

NTS

SHEET

OF

1 1

REV

5

DWG NO.

860-008-113R00Y