

Test Procedure for the NCP692, 1A, LDO

ON Semiconductor



Test Setup:

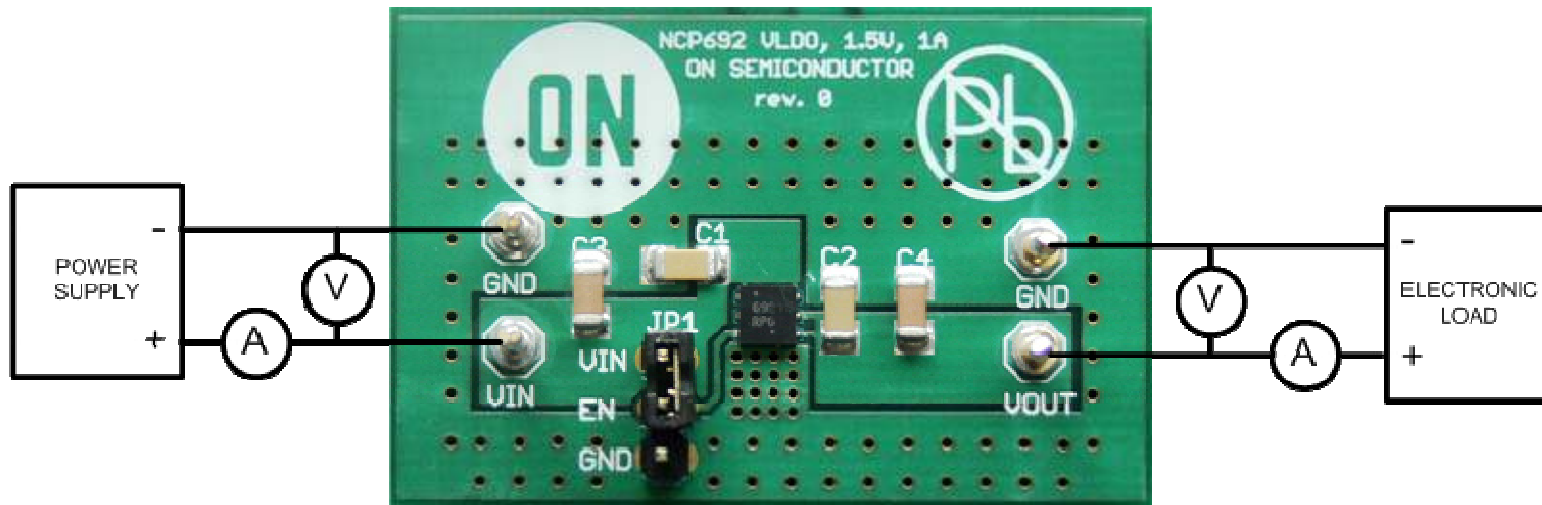


Figure 1

Required Equipment:

- 2 x Voltmeters
- 2 x Ampere meters
- DC Power Supply – up to 6V at 1A
- Electronic Load

Test Procedure for the NCP692, 1A, LDO

ON Semiconductor



Test Procedure:

1. Connect the test setup as shown on Figure 1.
2. Place the Jumper JP1 to connect VIN and EN pins (Figure 1).
3. Set the Electronic Load to constant current mode at 1 amp.
4. Apply the Input Voltage of exactly .5 volts higher than the specified output voltage on the silkscreen.
5. Verify that the Voltage Regulator turns on and that the output voltage is equal to the required nominal value.
6. Move the JP1 position from VIN-EN to GND-EN.
7. Verify that the regulator turns off.