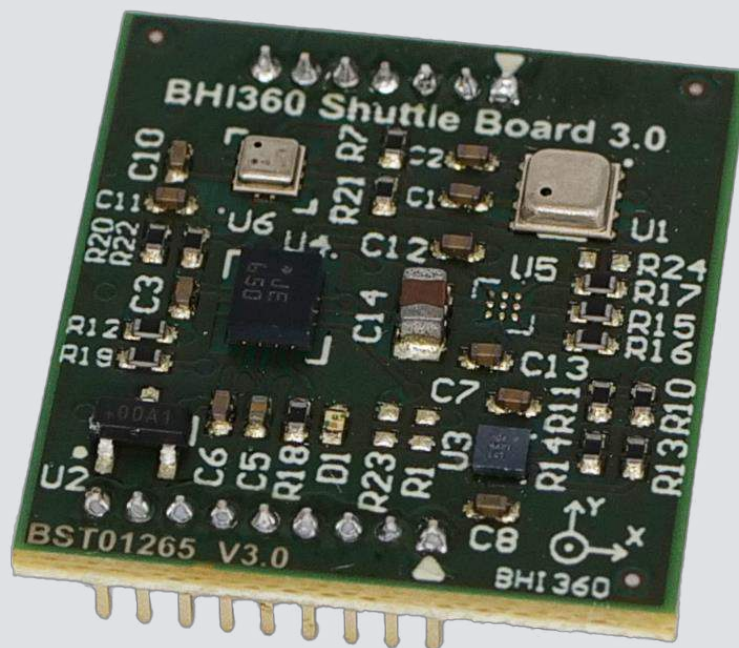




BOSCH

BHI360

Shuttle board 3.0 flyer

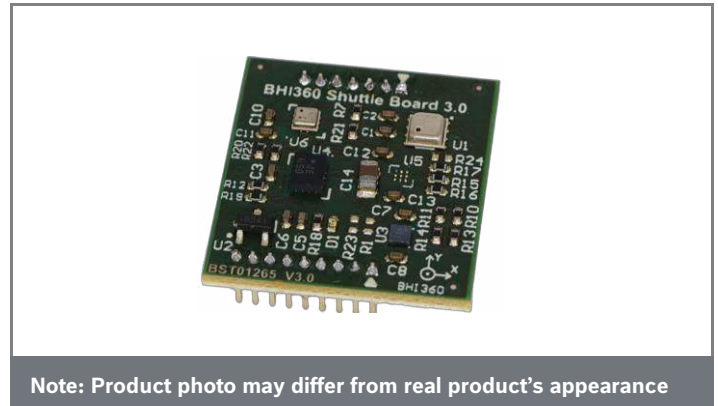


1 General description

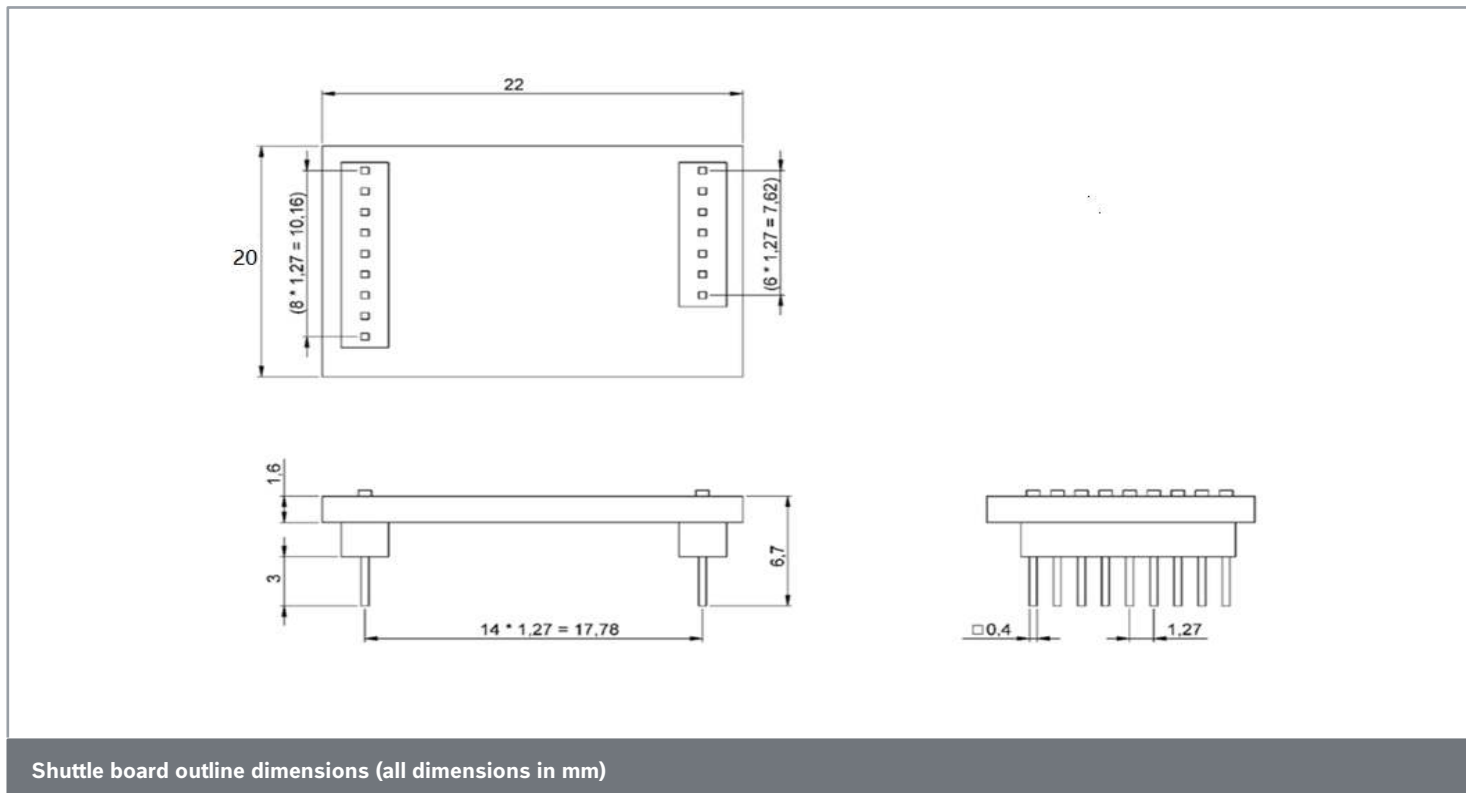
The Bosch Sensortec BHI360 shuttle board 3.0 is a PCB with the smart sensor BHI360 mounted on it. In combination with Bosch Sensortec’s application board 3.0, this shuttle board can be used to evaluate various functionalities provided on the BHI360. The shuttle board allows easy access to the sensor pins via a simple socket. The shuttle board includes following major components:

- BHI360 smart sensor
- BME688 environmental sensor (I2C interface)
- BMP580 pressure sensor (I2C interface)
- BMM150 magnetometer (AUX Interface)
- BMM350 magnetometer (AUX Interface)
- On-board EEPROM

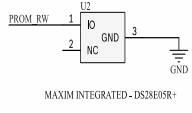
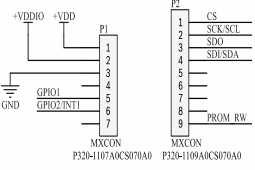
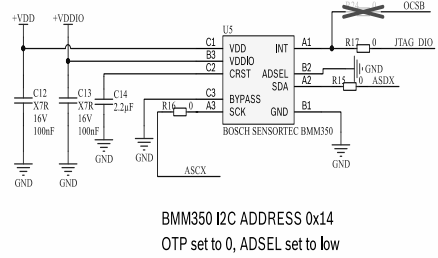
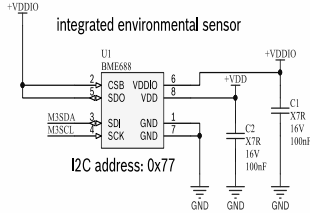
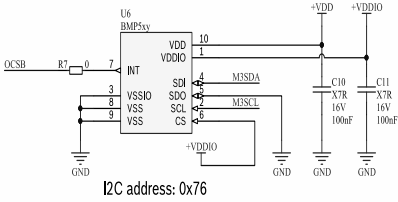
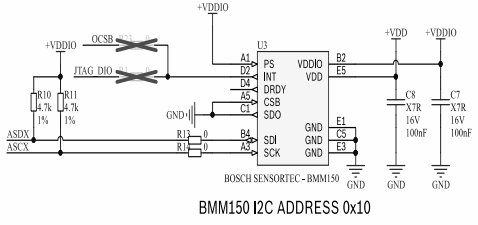
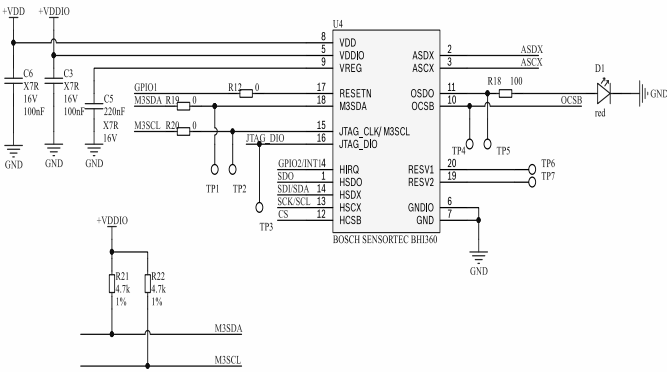
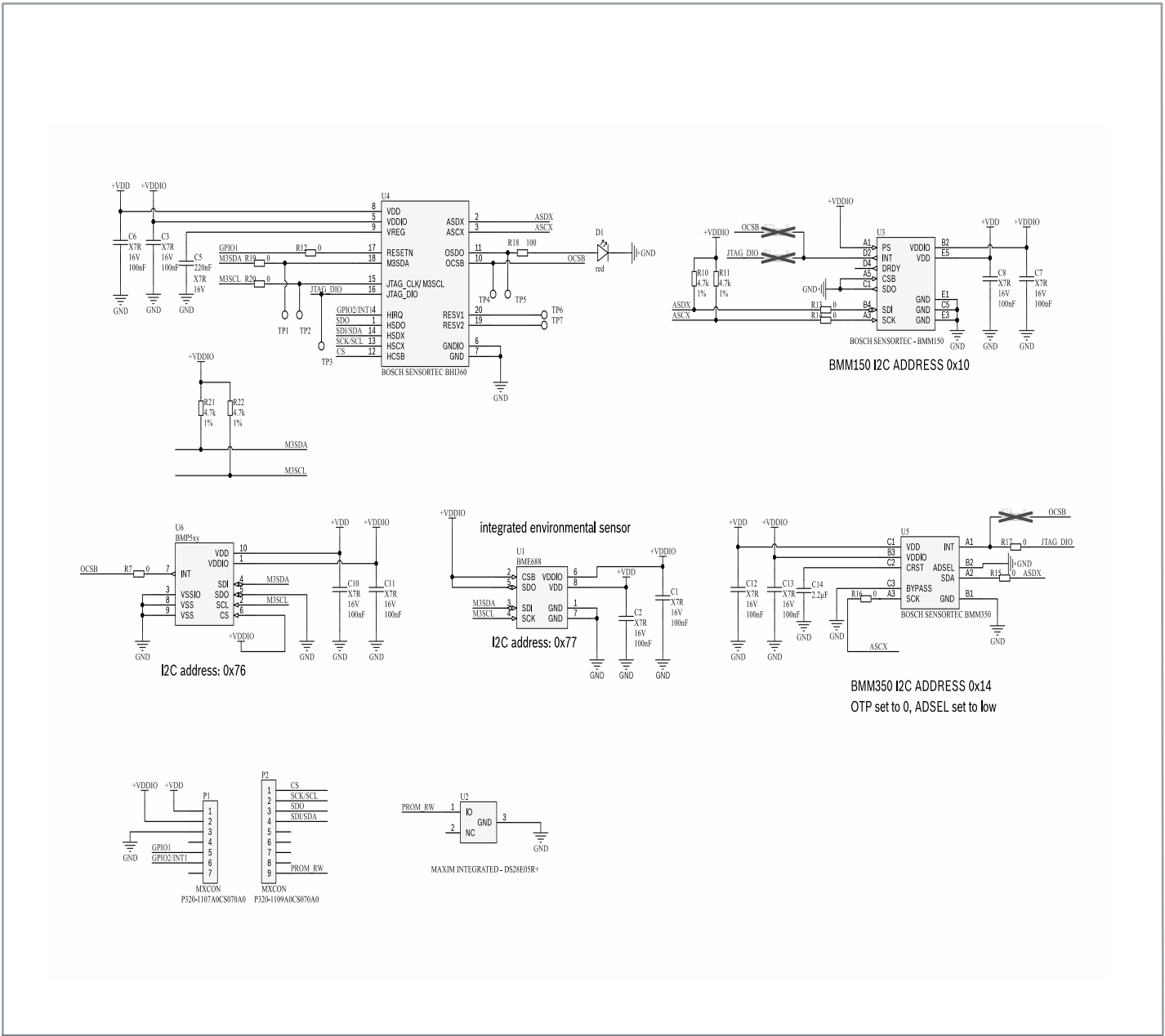
The shuttle board 3.0 can be directly plugged into the application board 3.0.



Note: Product photo may differ from real product’s appearance



Shuttle board outline dimensions (all dimensions in mm)



BHI360 shuttle board electrical layout

2 Designator P1 shuttle board connector

Pin	Pin name	Description
1	VDD	Power supply (1.8 V only!)
2	VDDIO	Power supply (1.8 V only!)
3	GND	Ground
4	NC	(Not Connected)
5	GPIO1	BHI360 reset input, active low
6	GPIO2/INT1	Host interrupt pin (connected to BHI360 host interrupt)
7	NC	

Shuttle board identification:

- Shuttle ID: 101111001
- Shuttle board identifier: BST01265

3 Designator P2 shuttle board connector

Pin	Pin name	Description
1	CS	Chip select pin of SPI bus (connected to BHI360 host interface)
2	SCK	Clock pin of both SPI and I2C bus (connected to BHI360 host interface)
3	SDO	Master-input-slave-output data pin of SPI bus (connected to BHI360 host interface)
4	SDI	Master-input-slave-output data pin of SPI bus (connected to BHI360 host interface)
5	NC	
6	NC	
7	NC	
8	NC	
9	PROM_RW	Connected to EEPROM

Headquarters Bosch Sensortec GmbH

Gerhard-Kindler-Strasse 9
72770 Reutlingen · Germany
Telephone +49 7121 3535 900
Fax +49 7121 3535 909

www.bosch-sensortec.com