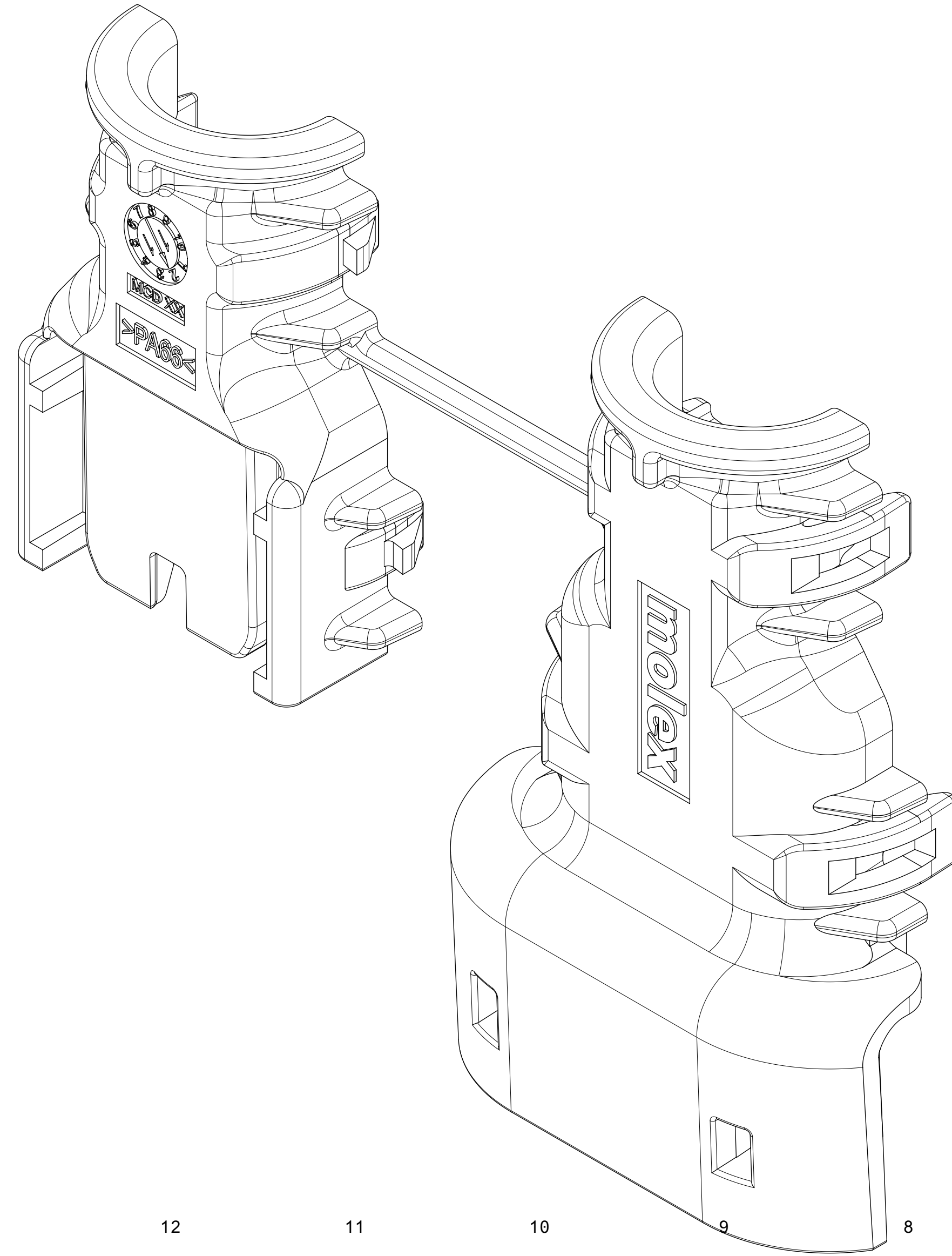


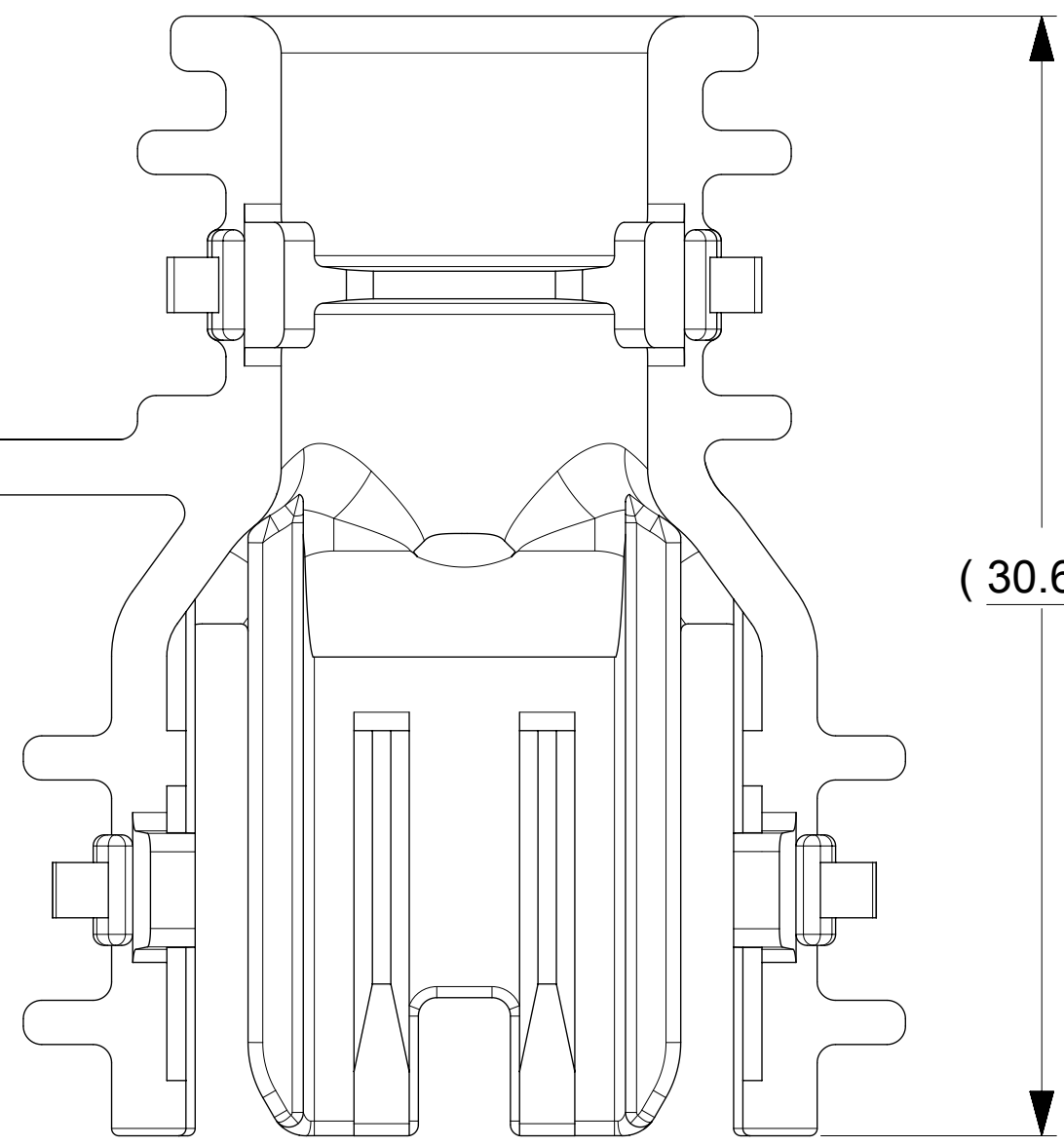
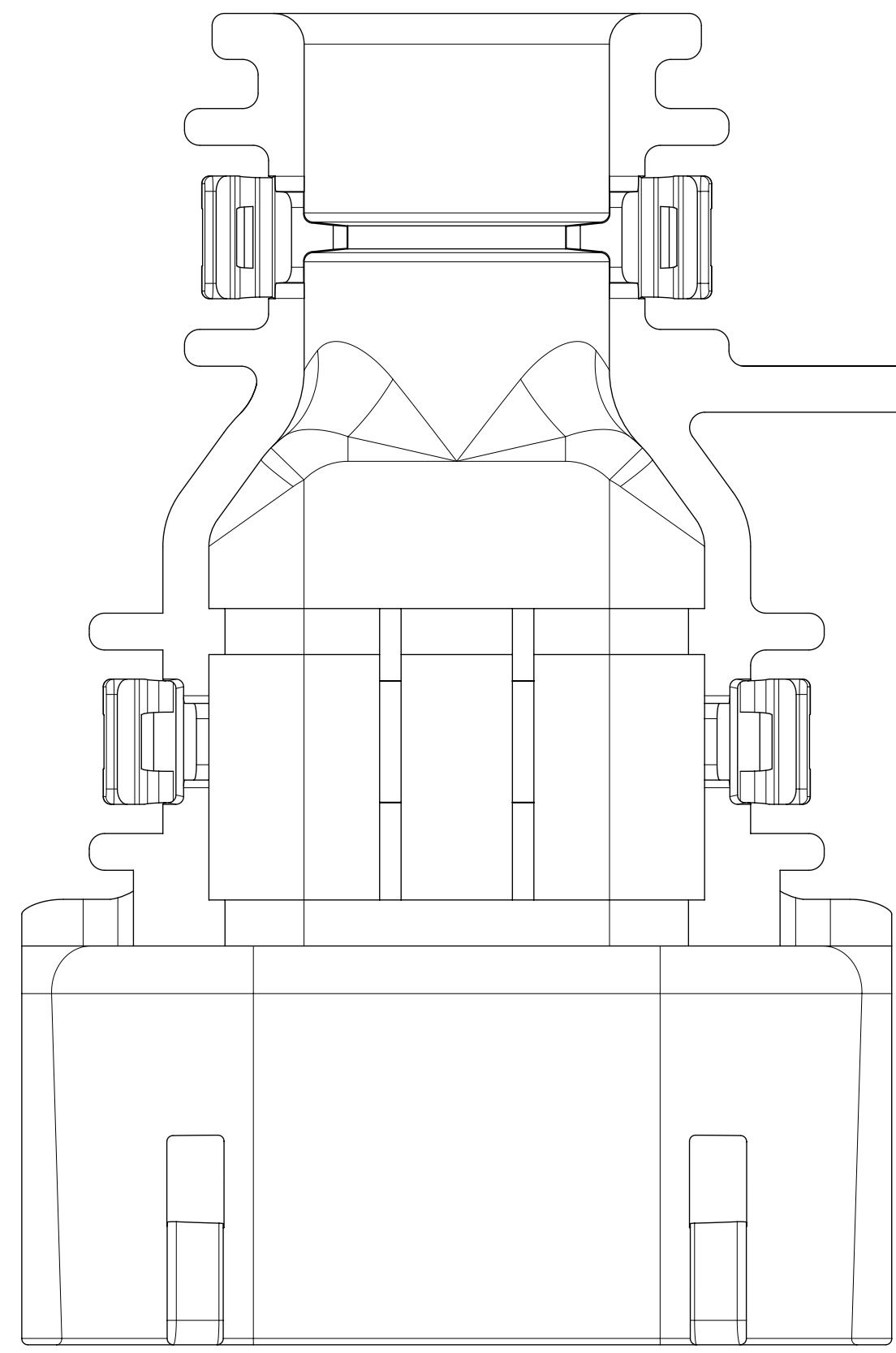
BILL OF MATERIALS (BOM)							
DESCRIPTION	PART NUMBER	CIRCUIT SIZE	COLOR	RIBS	MATING DRAWING	CONVOLUTE SIZE	STATUS
1X3 C.S., WITH RIB	204351-0301	1X3 C.S.	BLACK	YES	SD-160073-001	AD 10 SOFANO	OK TO TOOL



BACKSHELL NOTES: VALID UNLESS OTHERWISE SPECIFIED

1. GENERAL:
  - a. APPLICATION SPECIFICATION SEE: AS-34951-001
    - DESIGNED TO MATE WITH CONNECTOR AS SPECIFIED IN THE BOM
    - COMPONENTS ARE OPTIONAL AND MUST BE PURCHASED SEPERATELY
  - b. PRODUCT SPECIFICATION SEE: TBD
  - c. PACKAGING SPECIFICATION SEE: TBD
  - d. PARTS MUST BE IN COMPLIANCE TO MOLEX CHEMICAL SUBSTANCES FOR PRODUCTS AND PACKAGING SPECIFICATION: QEHS-699000-300
  - e. DATA MUST BE SUBMITTED UNDER THE MOLEX PART NUMBER TO IMDS (COMPANY ID#13255)
  - f. FOLLOWING PRODUCTION CODES TO BE PRESENT
    - DATE CODE
    - MOLD CAVITY CODE
    - MOLEX LOGO
    - RECYCLE CODE
2. DESIGN - MATERIALS:
  - a. PA66 0% GLASS FILLED
  - b. BLACK
3. DESIGN GEOMETRY:
  - a. THIS IS A 100% CAD GENERATED PART. THE CAD MATHEMATICAL DATA IS THE MASTER FOR THIS PART. FOR DIMENSIONAL OR ANY INFORMATION NOT SHOWN ON THIS DRAWING, ANALYZE THE CAD MODEL.
  - b. GEOMETRIC DIMENSIONS AND TOLERANCES PER ASME Y14.5M - 2009.
  - c. CORNERS SHOWN AS SHARP TO BE R 0.1.
  - d. VISUAL DEFECTS SHALL MEET COSMETIC STANDARD PS-45499-002 (CLASS B).
  - e. ALLOWABLE FLASH, PARTING LINES MISMATCH, EJECTOR PINS MARK, AND GATE VESTIGE TO BE +0.30 MAX PROTUSION.

QUALITY SYMBOLS ▽ = 0 ▽ = 0 ▽ = 0 ▽ = 0 ▽ = 0 ▽ = 0 ▽ = 0 ▽ = 0	THIS DRAWING CONTAINS INFORMATION THAT IS PROPRIETARY TO MOLEX ELECTRONIC TECHNOLOGIES, LLC AND SHOULD NOT BE USED WITHOUT WRITTEN PERMISSION		DIMENSION UNITS <b>mm</b>		SCALE <b>5:1</b>				
	GENERAL TOLERANCES (UNLESS SPECIFIED) ANGULAR TOL ± °		DRWN BY <b>CBOWDEN</b>		DATE <b>2017/09/13</b>				
4 PLACES ± 3 PLACES ± 2 PLACES ± 1 PLACE ± 0 PLACES ±		CHKD BY <b>CHKD BY</b>		DATE <b>2017/09/14</b>		<b>PRODUCT CUSTOMER DRAWING</b>			
DRAFT WHERE APPLICABLE MUST REMAIN WITHIN DIMENSIONS		APPR BY <b>MVANSLAMBROU</b>		DATE <b>2017/09/14</b>					SERIES MATERIAL NUMBER CUSTOMER <b>204351</b>
A1		EC NO: 168534 DRWN: CBOWDEN CHKD: MVANSLAMBROU REV APPR:		DRAWING SIZE <b>D</b>		THIRDO ANGLE PROJECTION 		DOCUMENT NUMBER DOC TYPE DOC PART SHEET NUMBER <b>2043510301 PSD 000 1 OF 2</b>	



( 30.60 MAX )

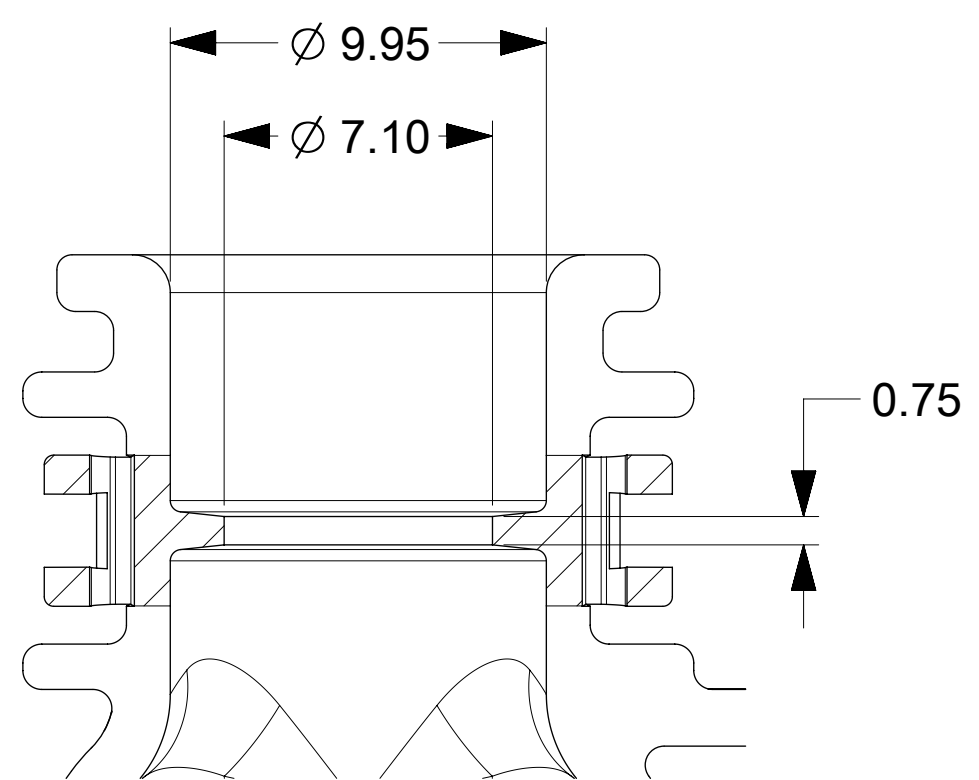
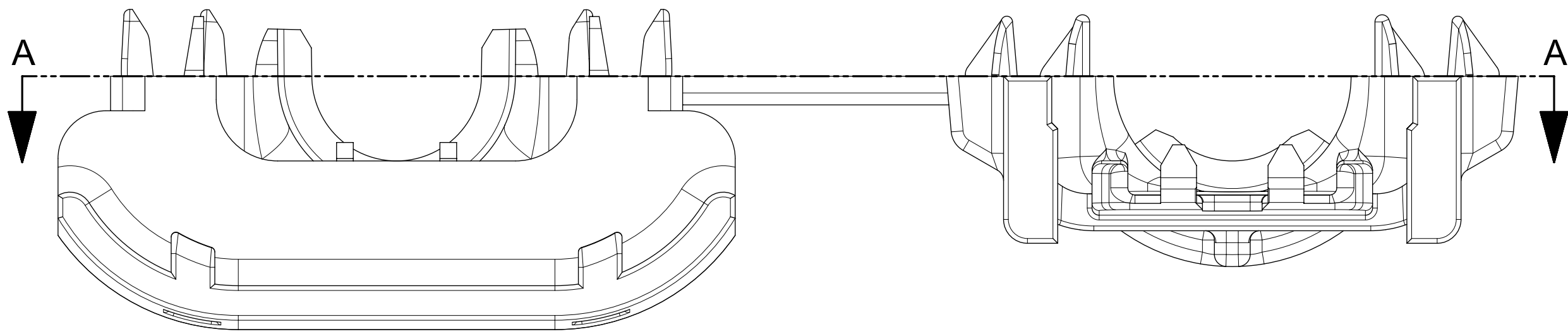
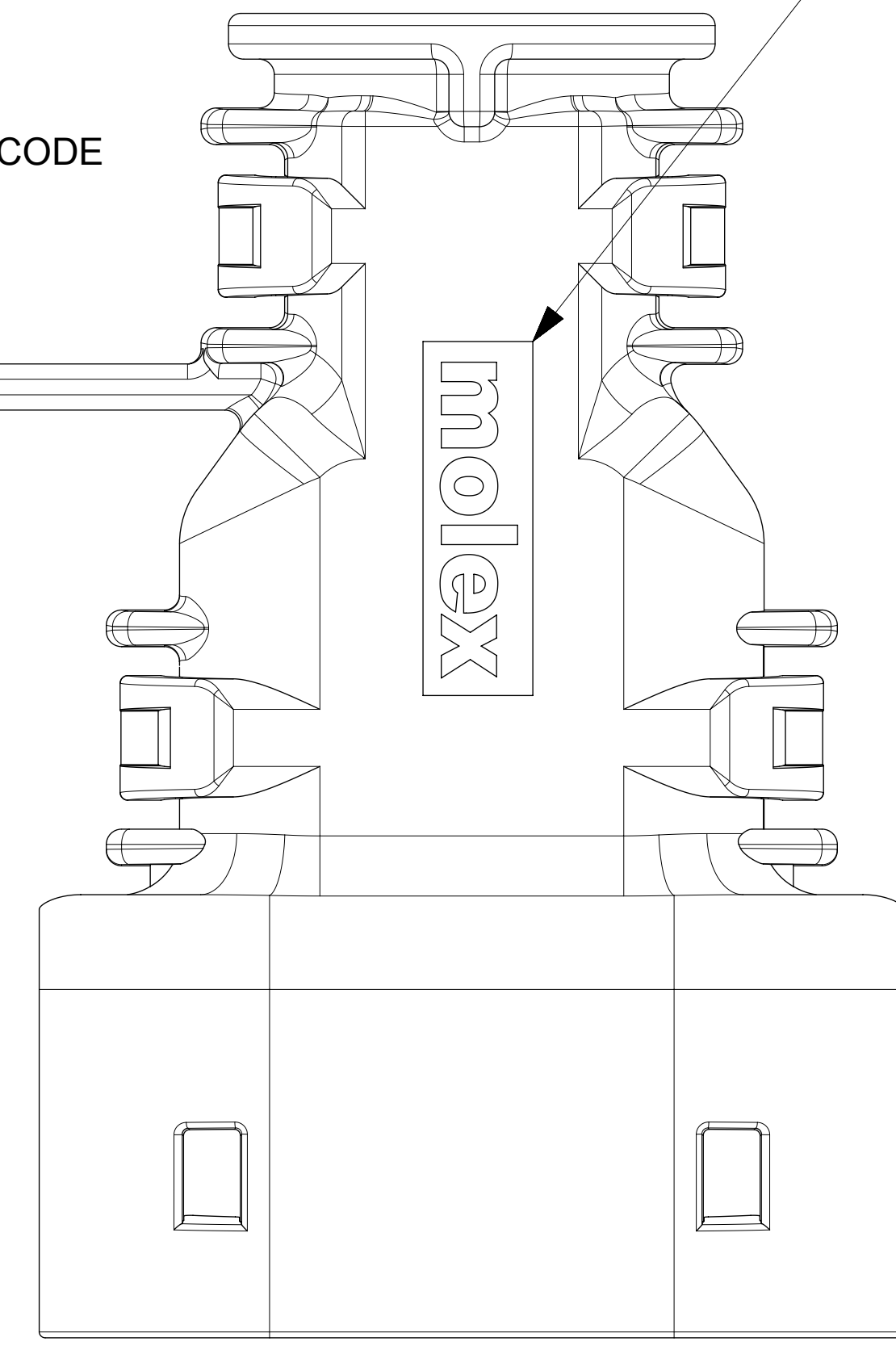
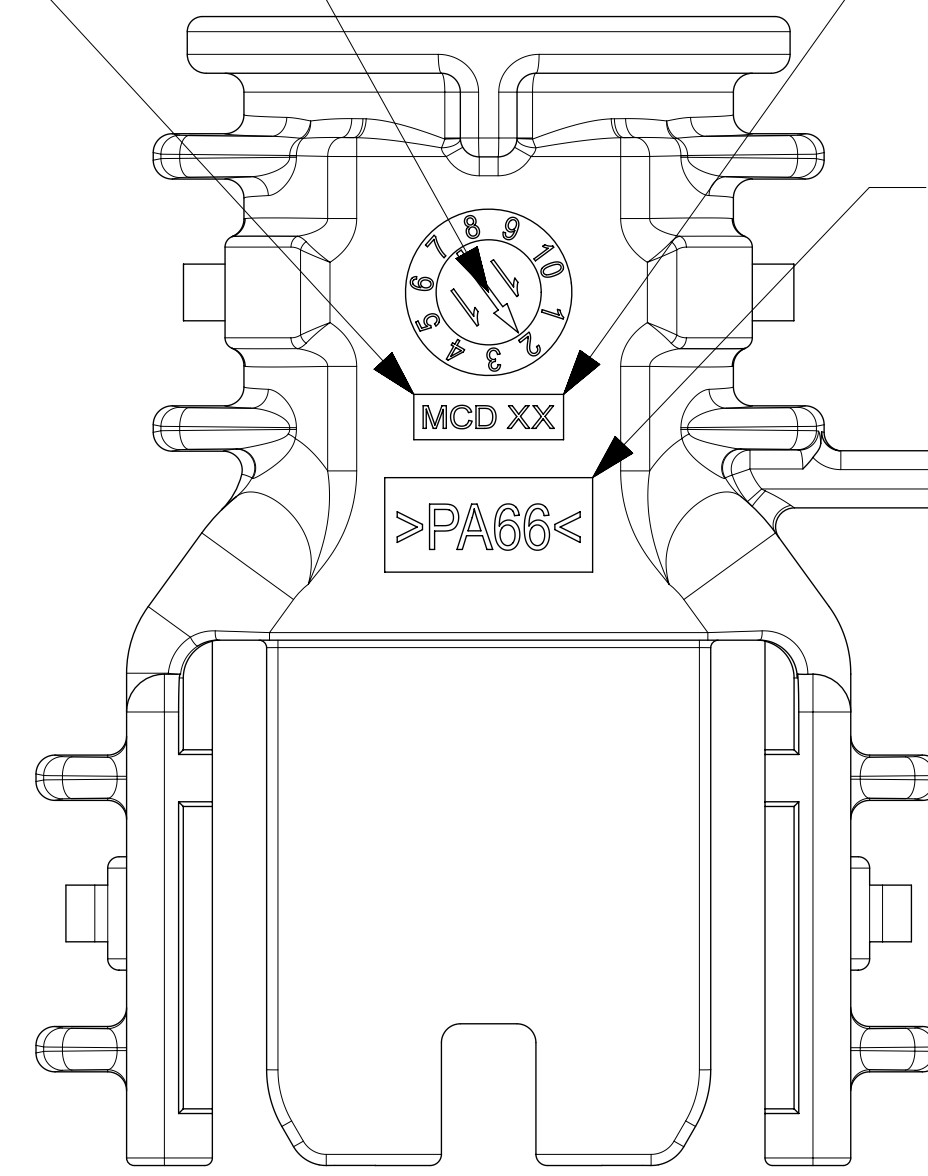
DATE WHEEL

MANUFACTURING LOCATION

MOLD CAVITY I.D.

MOLEX LOGO

RECYCLING CODE



SECTION A-A

THIS DRAWING CONTAINS INFORMATION THAT IS PROPRIETARY TO MOLEX ELECTRONIC TECHNOLOGIES, LLC AND SHOULD NOT BE USED WITHOUT WRITTEN PERMISSION											
<b>QUALITY SYMBOLS</b> ▽ = 0 ▽ = 0 ▽ = 0 ▽ = 0 ▽ = 0 ▽ = 0 ▽ = 0 ▽ = 0 ▽ = 0 ▽ = 0 ▽ = 0 ▽ = 0 ▽ = 0		EC NO: 168534 DRWN: CBOWDEN CHK'D: REV: APPR: MVANSLAMBROU		2017/11/29 2017/12/14		<b>GENERAL TOLERANCES (UNLESS SPECIFIED)</b> ANGULAR TOL ± ° 4 PLACES ± 3 PLACES ± 2 PLACES ± 1 PLACE ± 0 PLACES ± DRAFT WHERE APPLICABLE MUST REMAIN WITHIN DIMENSIONS		DIMENSION UNITS: mm SCALE: 1:1 DRWN BY: CBOWDEN DATE: 2017/09/13 CHKD BY: DATE: APPR BY: MVANSLAMBROU DATE: 2017/09/14			
RELEASE STATUS: P1 RELEASE DATE: 14.12.2017 02:49:53		SERIES: 204351 MATERIAL NUMBER: 20435110301 CUSTOMER:		PRODUCT CUSTOMER DRAWING		DOCUMENT NUMBER: 2043510301 DOC TYPE: PSD DOC PART: 000 SHEET NUMBER: 2 OF 2					