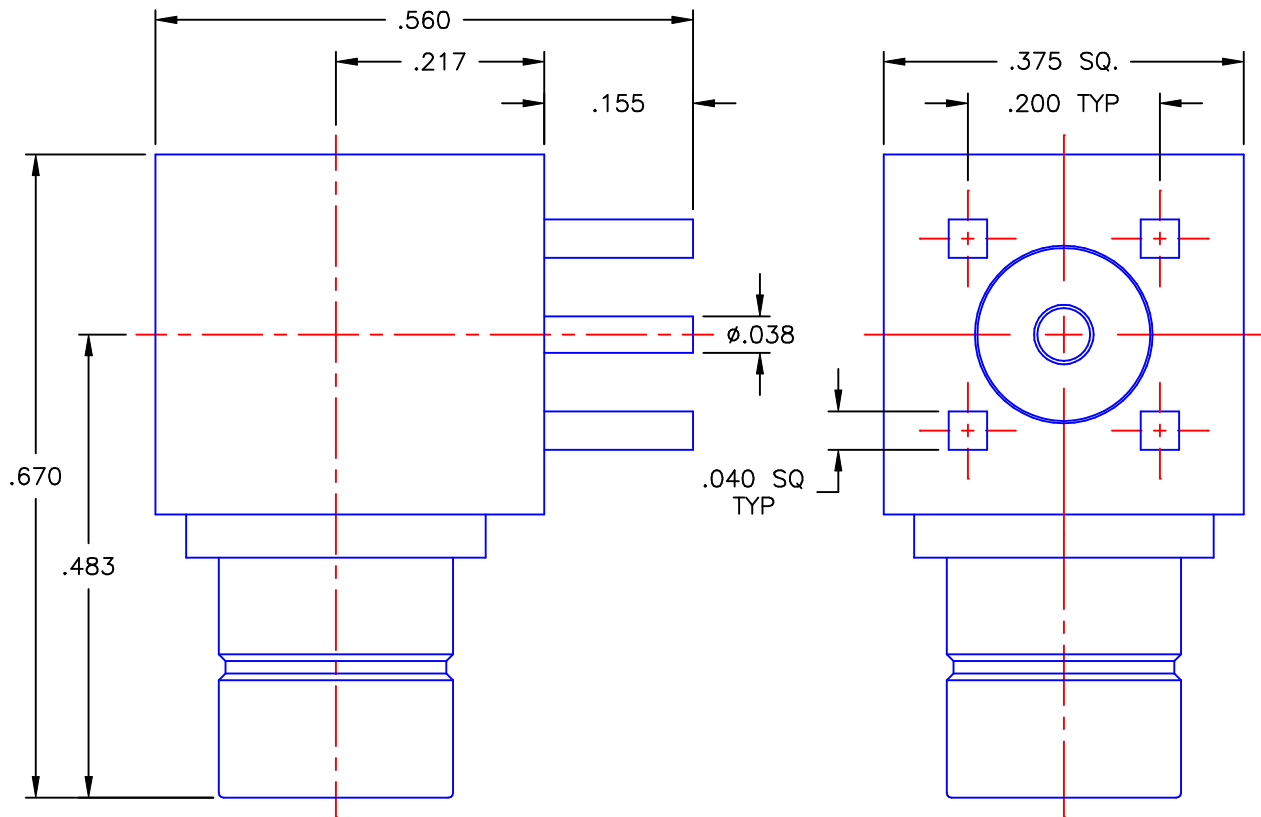


REVISIONS			
REV	DESCRIPTION	DATE	APPROVED
A	ECO #7508	03/19/09	A.D.M.



NOTES:


MATERIALS:

1. INSULATORS = VIRGIN WHITE TEFLON PER ASTM D1710, GRADE 1, TYPE I, CLASS "B".
2. ALL OTHER METAL PARTS = BRASS PER ASTM B16, ALLOY C36000, TEMPER H02.

FINISHES:

1. CONTACTS = GOLD PLATE PER MIL-G-45204, TYPE II, CLASS 1, GRADE C, OVER .00010 TO .00020 STRESS FREE SULFAMATE NICKEL PER QQ-N-290.
2. ALL OTHER METAL PARTS = GOLD PLATE PER MIL-G-45204, TYPE II, CLASS 0, GRADE C, OVER .00010 TO .00020 COPPER STRIKE PER MIL-C-14550.

Property of Radiall Incorporated  
 This document cannot be reproduced or  
 communicated to a third party without prior  
 written permission of RADIALL Incorporated.

UNLESS OTHERWISE SPECIFIED DIMENSIONS ARE IN INCHES TOLERANCES ON		DWN: A.D.M.	DATE 03/19/09	 <b>APPLIED ENGINEERING PRODUCTS</b> 104 John W. Murphy Dr. New Haven, CT 06513
		CHKD: D.N.	DATE 03/19/09	
DECIMAL	ANGLE	APVD: J.M.	DATE 03/19/09	
				<b>75 OHM SMB RIGHT ANGLE          MALE JACK P.C.B.          MOUNT RECEPTACLE</b>
REFERENCE:		MATERIALS & FINISHES:  SEE NOTES		SIZE A
ORIGINATOR: D.N. DATE: 03/19/00				FSCM NO. 19505
				DWG NO. 2710-1511-000
				REV A
				SCALE 5:1
				THIRD ANGLE PROJECTION
				SHEET 1 OF 1

2710-1511-000