

## Pin strip - PST 1,3/ 6-5,0 R56 - 1720330

Please be informed that the data shown in this PDF Document is generated from our Online Catalog. Please find the complete data in the user's documentation. Our General Terms of Use for Downloads are valid (<http://phoenixcontact.com/download>)



Header, Nominal current: 12 A, Rated voltage (III/2): 320 V, Number of positions: 6, Pitch: 5 mm, Color: black, Contact surface: Tin, Assembly: Taped SMD/THT/THR components, Voltage and current depend on the plug-in terminal block used.

### Product Features

- Various pin lengths and pin geometries available on request
- Pin strip with pad pushed on for suction pipette for optional tape-on-reel packing
- 5.0 mm pitch
- Optimum pin geometry so as to not damage the plug
- Pin strip available in machine-capable packaging (tube magazine or tape)
- Reflow solderable pin strip, optimized for COMBICON compact connectors



### Key commercial data

|                                      |          |
|--------------------------------------|----------|
| Packing unit                         | 1 pc     |
| Minimum order quantity               | 250 pc   |
| Weight per Piece (excluding packing) | 3.18 GRM |
| Custom tariff number                 | 85366990 |
| Country of origin                    | Germany  |

### Technical data

#### Dimensions

|                |        |
|----------------|--------|
| Length         | 2.8 mm |
| Pitch          | 5 mm   |
| Dimension a    | 25 mm  |
| Pin dimensions | 1,3 mm |
| Hole diameter  | 1.6 mm |

#### General

|                   |              |
|-------------------|--------------|
| Range of articles | PST 1,3/..-V |
|-------------------|--------------|

## Pin strip - PST 1,3/ 6-5,0 R56 - 1720330

### Technical data

#### General

|   |                                 |
|---|---------------------------------|
| Insulating material group               | IIIa                            |
| Rated surge voltage (III/3)             | 4 kV                            |
| Rated surge voltage (III/2)             | 4 kV                            |
| Rated surge voltage (II/2)              | 4 kV                            |
| Rated voltage (III/3)                   | 250 V                           |
| Rated voltage (III/2)                   | 320 V                           |
| Rated voltage (II/2)                    | 400 V                           |
| Connection in acc. with standard        | EN-VDE                          |
| Nominal current I <sub>N</sub>          | 12 A (depends on the plug used) |
| Maximum load current                    | 12 A (depends on the plug used) |
| Insulating material                     | PA                              |
| Inflammability class according to UL 94 | V0                              |
| Color                                   | black                           |
| Number of positions                     | 6                               |

### Classifications

#### eCl@ss

|            |          |
|------------|----------|
| eCl@ss 4.0 | 272607xx |
| eCl@ss 4.1 | 27260701 |
| eCl@ss 5.0 | 27260701 |
| eCl@ss 5.1 | 27260701 |
| eCl@ss 6.0 | 27260704 |
| eCl@ss 7.0 | 27440402 |
| eCl@ss 8.0 | 27440402 |

#### ETIM

|          |          |
|----------|----------|
| ETIM 3.0 | EC001121 |
| ETIM 4.0 | EC002637 |
| ETIM 5.0 | EC002637 |

#### UNSPSC

|               |          |
|---------------|----------|
| UNSPSC 6.01   | 30211801 |
| UNSPSC 7.0901 | 39121432 |
| UNSPSC 11     | 34131203 |
| UNSPSC 12.01  | 39121432 |
| UNSPSC 13.2   | 39121432 |

# Pin strip - PST 1,3/ 6-5,0 R56 - 1720330

## Approvals

### Approvals

---

#### Approvals

CSA / UL Recognized / SEV / cUL Recognized / GOST / GOST / cULus Recognized

---


#### Ex Approvals


---

#### Approvals submitted


---

## Approval details

|  |       |       |
|--|-------|-------|
| CSA  |       |       |
|  | B     | D     |
| Nominal current IN   | 5 A   | 5 A   |
| Nominal voltage UN   | 300 V | 300 V |

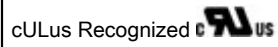
|   |       |       |
|---|-------|-------|
| UL Recognized  |       |       |
|   | B     | D     |
| Nominal current IN  | 16 A  | 10 A  |
| Nominal voltage UN  | 300 V | 300 V |

|                    |  |       |
|--------------------|--|-------|
| SEV                |  |       |
| Nominal current IN |  | 10 A  |
| Nominal voltage UN |  | 250 V |

|  |       |       |
|--|-------|-------|
| cUL Recognized  |       |       |
|  | B     | D     |
| Nominal current IN   | 16 A  | 10 A  |
| Nominal voltage UN   | 300 V | 300 V |

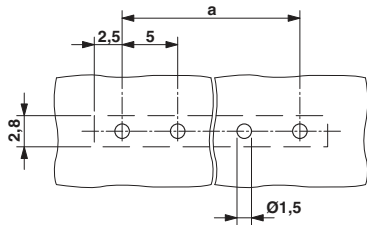
# Pin strip - PST 1,3/ 6-5,0 R56 - 1720330

## Approvals

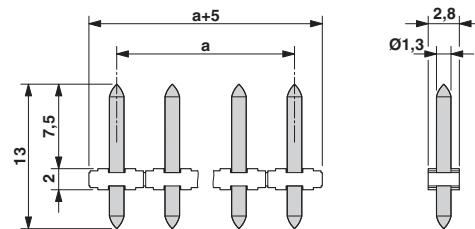


## Drawings

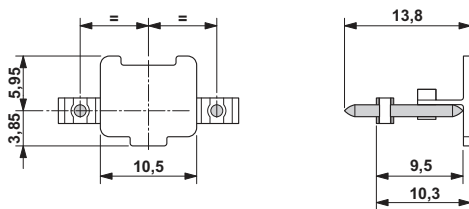
Drilling diagram



Dimensioned drawing



Dimensioned drawing



Dimensioned drawing

