

**注記 NOTES**

**1. 使用材料 MATERIAL**

- ハウジング : 液晶ポリマー ガラス充填, UL94-V0(ベージュ)
- HOUSING : LIQUID CRYSTAL POLYMER GLASS FILLED, UL94V-0(BEIGE)
- アクチュエータ : PPS ガラス充填, UL94V-0(黒)
- ACTUATOR : PPS GLASS FILLED, UL94V-0(BLACK)
- ターミナル : リン青銅(t=0.15)
- TERMINAL : PHOSPHOR BRONZE
- 金具 : リン青銅(t=0.15)
- FITTING NAIL : PHOSPHOR BRONZE

△ R0.3は、FPC導体部にかからないこと。  
R0.3 MUST NOT BE OVERLAPPED TO PATTERN OF FPC.

- 6. N: 極数 N: CIRCUIT.
- 7. ELV及びRoHS適合品  
ELV AND RoHS COMPLIANT

**2. めっき仕様 PLATING**

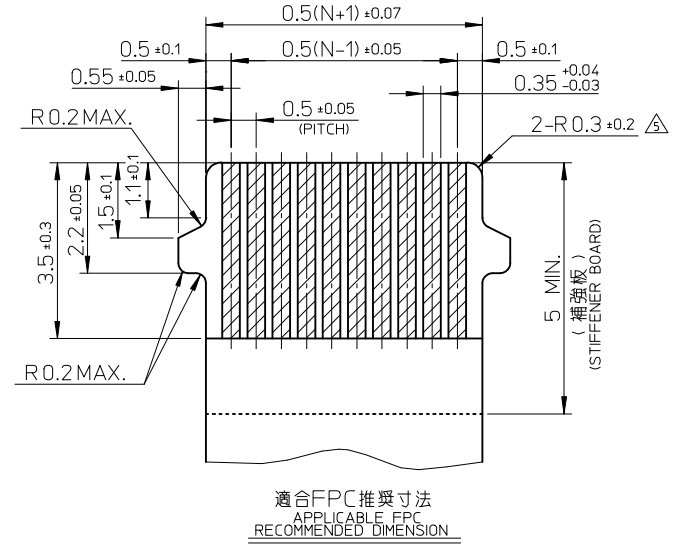
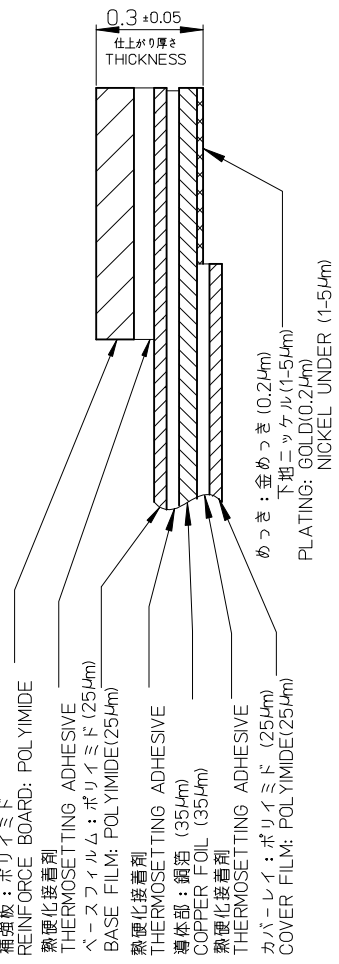
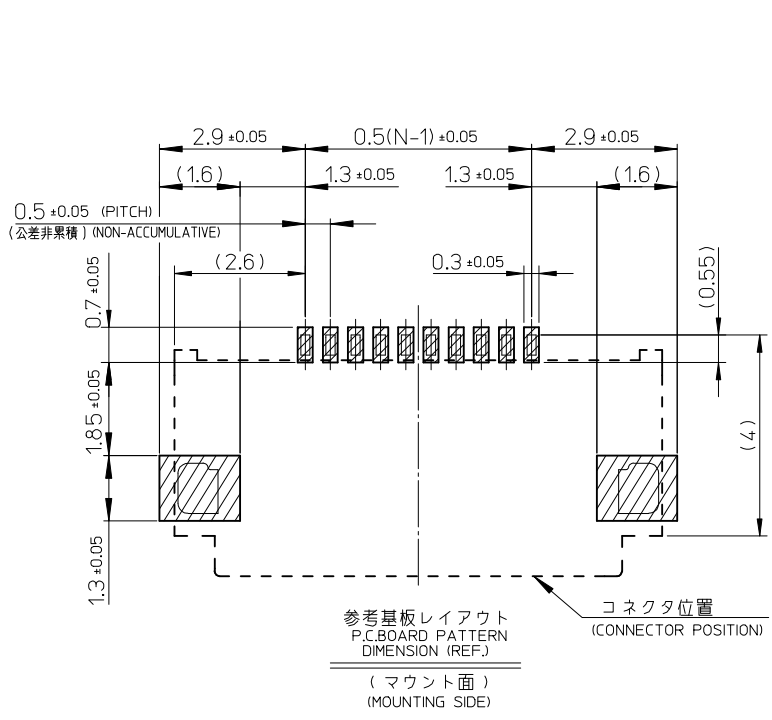
- ターミナル TERMINAL  
ニッケル下地 接点部: 金めっき、半田付け部: 錫めっき  
CONTACT AREA: GOLD(Au), TAIL AREA: TIN(Sn)  
UNDER: NICKEL(Ni) PLATING.
- 金具 FITTING NAIL  
ニッケル下地 錫めっき  
TIN(Sn) UNDER NICKEL(Ni) PLATING.

**3. エンボスターペーパー梱包時は、アクチュエータが閉じた状態とする。**  
IN THE PACKAGE, ACTUATOR OF PART 503199-97\*\* SHOULD BE CLOSED.

△ パターン剥離止め用金具  
FITTING NAIL FOR PREVENTION OF PEELING OF P.C.B. PATTERN.

40.1	36.5	41.7	503199-9674	503199-9774	74
36.1	32.5	37.7	503199-9666	503199-9766	66
25.6	22.0	27.2	503199-9645	503199-9745	45
C	B	A	EMBOSSD TAPE	MATERIAL NO.	CIRCUIT
ORDER No. オーダー番号					

REVISED EC NO: J2009-2234 DRWN:MTAKASAKI 2009/04/08 CHKD:MHAYASHI 2009/04/09 APPR:NUKITA 2009/04/10	GENERAL TOLERANCES (UNLESS SPECIFIED)		DIMENSION STYLE MM ONLY		SCALE ---	DESIGN UNITS METRIC	THIRD ANGLE PROJECTION
	10 UNDER	± ---	DRAWN BY M. HAYASHI	DATE 2008/02/20	TITLE 0.5 FPC CONN ZIF E/O 2 CONTACTS TYPE HSG ASSY (H=2.5)		
	10 OVER 30 UNDER	± ---	CHECKED BY T. HARUYAMA	DATE 2008/02/20	MOLEX INCORPORATED		
	30 OVER	± ---	APPROVED BY N. UKITA	DATE 2008/02/20	DOCUMENT NO. SD-503199-001		
ANGULAR ± --- °	DRAFT WHERE APPLICABLE MUST REMAIN WITHIN DIMENSIONS		SEE CHART		SHEET NO. 1 OF 2		
SIZE A3		THIS DRAWING CONTAINS INFORMATION THAT IS PROPRIETARY TO MOLEX INCORPORATED AND SHOULD NOT BE USED WITHOUT WRITTEN PERMISSION					



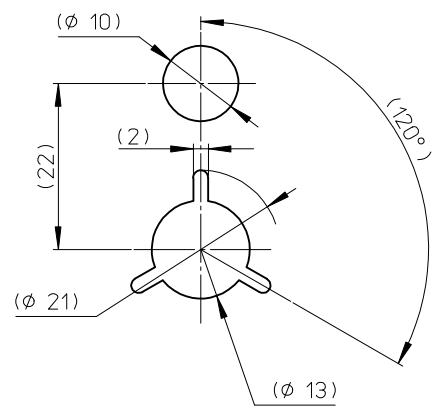
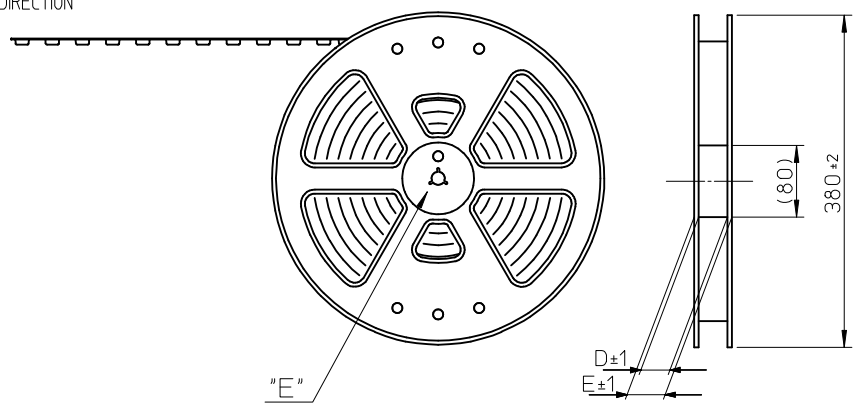
**FPC について:**  
 打ち抜き方向は導体側から補強板側を推奨します。  
 導体部については軟銅箔35μmまたは50μmを推奨します。  
 補強フィルム材質はポリイミドを推奨します。ベースフィルムは25μmを推奨します。  
 接着剤は熱硬化接着剤を推奨します。  
 尚、接着剤の接点部への付着は導通不良の原因になりますので、染み出しが無い様お願い致します。

**ABOUT FPC**  
 RECOMMENDED PUNCHER DIRECTION : FROM CONDUCTOR SIDE TO STIFFENER FILM SIDE.  
 RECOMMENDED CONDUCTOR SPEC :  
 THICKNESS OF SOFT COPPER FOIL : 35 MICROMETER OR 50 MICROMETER.  
 RECOMMENDED MATERIAL/THICKNESS.  
 STIFFENER FILM : POLYIMIDE  
 BASE FILM THICKNESS : 25 μm  
 BONDING AGENT : THERMOSETTING BONDING AGENT  
 PLEASE PUT APPROPRIATE AMOUNT OF ADHESIVE ON ADHEREND BECAUSE THERE IS A POSSIBILITY THAT THE EXTRA ADHESIVE CAUSES THE DEFECT IN ELECTRICAL CONTINUITY.

FPC構成推奨仕様  
 STRUCTURE OF FPC

SEE SHEET 1 OF 2 EC NO: J2009-2234 DRWN:MTAKASAKI 2009/04/08 CHKD:HAYASHI 2009/04/09 APPR:NUKITA 2009/04/10	GENERAL TOLERANCES (UNLESS SPECIFIED)		DIMENSION STYLE MM ONLY		SCALE ---	DESIGN UNITS METRIC	THIRD ANGLE PROJECTION
	10 UNDER	± ---	DRAWN BY M. HAYASHI	DATE 2008/02/20	TITLE 0.5 FPC CONN ZIF E/O 2 CONTACTS TYPE HSG ASSY (H=2.5)		
	10 OVER 30 UNDER	± ---	CHECKED BY T. HARUYAMA	DATE 2008/02/20	MOLEX INCORPORATED		
	30 OVER	± ---	APPROVED BY N. UKITA	DATE 2008/02/20	DOCUMENT NO. SD-503199-001		
REV	DESCRIPTION	ANGULAR ± --- °		MATERIAL NO. SEE SHEET 1		SHEET NO. 2 OF 2	
DRAFT WHERE APPLICABLE MUST REMAIN WITHIN DIMENSIONS		THIS DRAWING CONTAINS INFORMATION THAT IS PROPRIETARY TO MOLEX INCORPORATED AND SHOULD NOT BE USED WITHOUT WRITTEN PERMISSION					

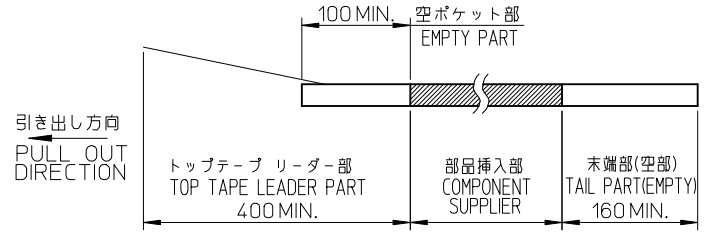
引き出し方向  
PULL OUT DIRECTION



DETAIL "E"

NOTES

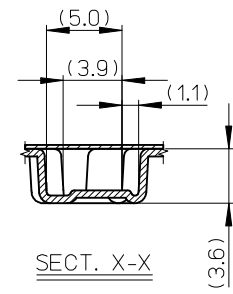
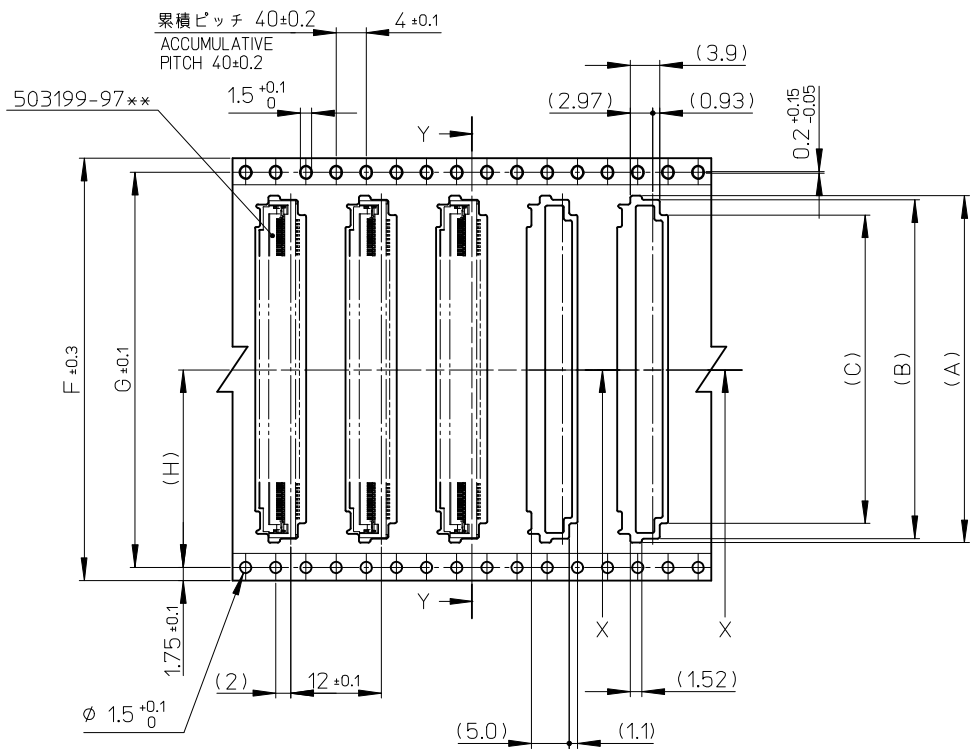
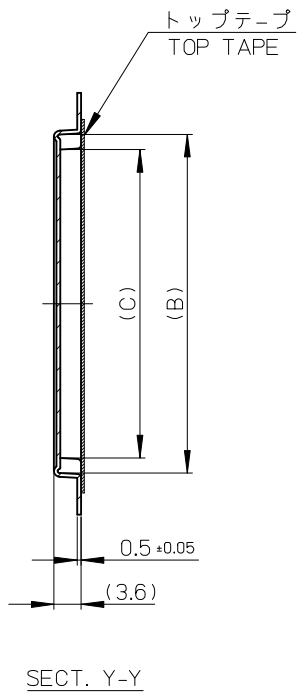
1. 梱包数量 : 2000個/リール  
NUMBER OF CONNECTORS : 2000PIECES/REEL
2. リードテープ長さ  
LEAD TAPE LENGTH



3. 製品詳細寸法については図面 SD-503199-001を参照下さい。  
FOR DIMENSIONS OF PRODUCT, REFER TO SD-503199-001.
4. 材料 MATERIAL  
キャリアテープ : ポリスチレン  
CARRIER TAPE : POLYSTYRENE  
トップテープ : ポリエチレンテレフタレート 他  
TOP TAPE : POLYETHYLENE TEREPHTHALATE , OTHER  
リール : ポリスチレン<リサイクル材を含む>  
REEL : POLYSTYRENE<RECYCLE MATERIAL CONTAINED>
5. ELV及びRoHS適合品 ELV AND RoHS COMPLIANT

REVISED EC NO: J2009-2234 DR: M. TAKASAKI 2009/04/08 CHKD: M. HAYASHI 2009/04/09 APPR: N. UKITA 2009/04/10	DESCRIPTION REV	GENERAL TOLERANCES (UNLESS SPECIFIED)		DIMENSION STYLE MM ONLY		SCALE --	DESIGN UNITS METRIC	THIRD ANGLE PROJECTION		
		10 UNDER	± ---	DRAWN BY M. HAYASHI	DATE 2008/02/21	TITLE 0.5 FPC CONN ZIF E/O 2 CONTACTS TYPE EMBSTP PACKAGE (H=2.5)				
		10 OVER 30 UNDER	± ---	CHECKED BY T. HARUYAMA	DATE 2008/02/21	MOLEX MOLEX INCORPORATED				
		30 OVER	± ---	APPROVED BY N. UKITA	DATE 2008/02/21	MATERIAL NO. SEE SHEET 1	DOCUMENT NO. SD-503199-002	SHEET NO. 1 OF 2		
		ANGULAR ± --- ° DRAFT WHERE APPLICABLE MUST REMAIN WITHIN DIMENSIONS		THIS DRAWING CONTAINS INFORMATION THAT IS PROPRIETARY TO MOLEX INCORPORATED AND SHOULD NOT BE USED WITHOUT WRITTEN PERMISSION						

引き出し方向  
PULL OUT  
DIRECTION



56	26.2	52.4	56	61.4	57.4	37.9	41.9	43	503199-9674	74
44	20.2	40.4	44	49.4	45.4	33.9	37.9	39	503199-9666	66
キャリアテープ幅 CARRIER TAPE WIDTH	(H)	G	F	E	D	(C)	(B)	(A)	製品番号 MATERIAL NO.	極数 CIRCUIT

SEE SHEET 1 OF 2 EC NO: J2009-2234 DRWN:MTAKASAKI 2009/04/08 CH'KD:MHAYASHI 2009/04/09 APPR:NUKITA 2009/04/10	GENERAL TOLERANCES (UNLESS SPECIFIED)		DIMENSION STYLE MM ONLY		SCALE --	DESIGN UNITS METRIC	THIRD ANGLE PROJECTION			
	10 UNDER	± ---	DRAWN BY M. HAYASHI	DATE 2008/02/21	TITLE 0.5 FPC CONN ZIF E/O 2 CONTACTS TYPE EMBSTP PACKAGE (H=2.5)					
	10 OVER 30 UNDER	± ---	CHECKED BY T. HARUYAMA	DATE 2008/02/21	MOLEX INCORPORATED					
	30 OVER	± ---	APPROVED BY N. UKITA	DATE 2008/02/21	DOCUMENT NO. SD-503199-002		SHEET NO. 2 OF 2			
ANGULAR ± --- °		DRAFT WHERE APPLICABLE MUST REMAIN WITHIN DIMENSIONS		SEE CHART		THIS DRAWING CONTAINS INFORMATION THAT IS PROPRIETARY TO MOLEX INCORPORATED AND SHOULD NOT BE USED WITHOUT WRITTEN PERMISSION				