

**MATERIALS AND FINISHES:**

**SMA JACK STR CONNECTOR:**

BODY, CRIMP TUBE, JAM NUT: BRASS  
PLATED GOLD

CENTER CONTACT: BERYLLIUM COPPER  
PLATED GOLD

INSULATOR: TEFLON

LOCK WASHER: PHOSPHOR BRONZE  
PLATED GOLD

**CONNECTOR:**

MHF® I LK

CABLE: 1.32MM CABLE BLACK

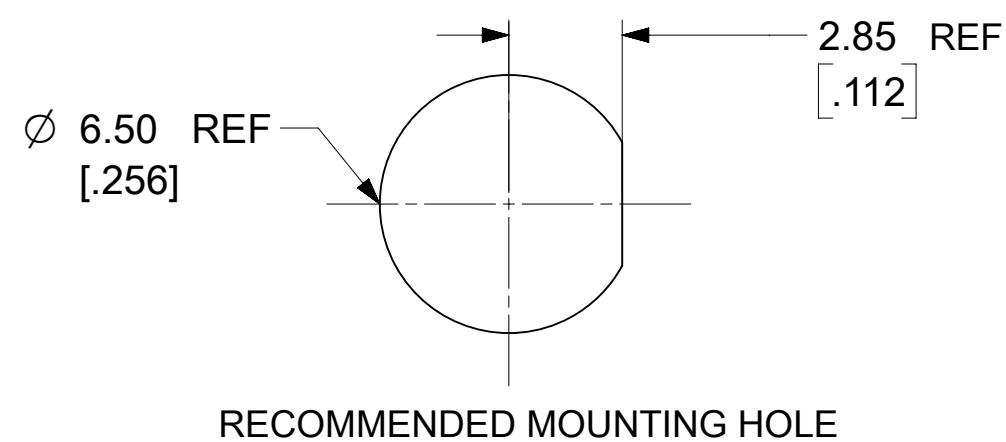
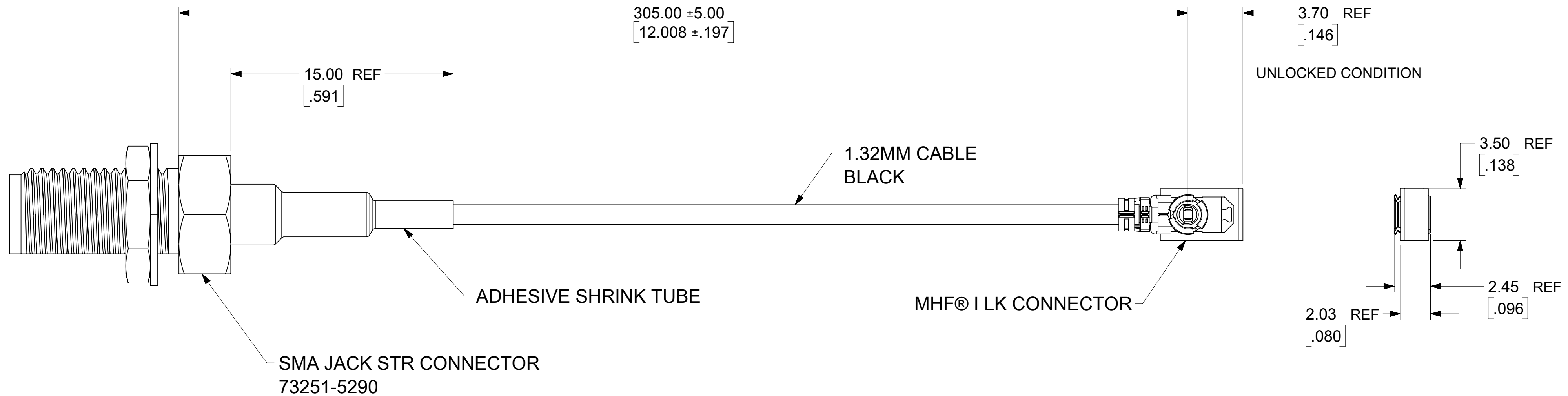
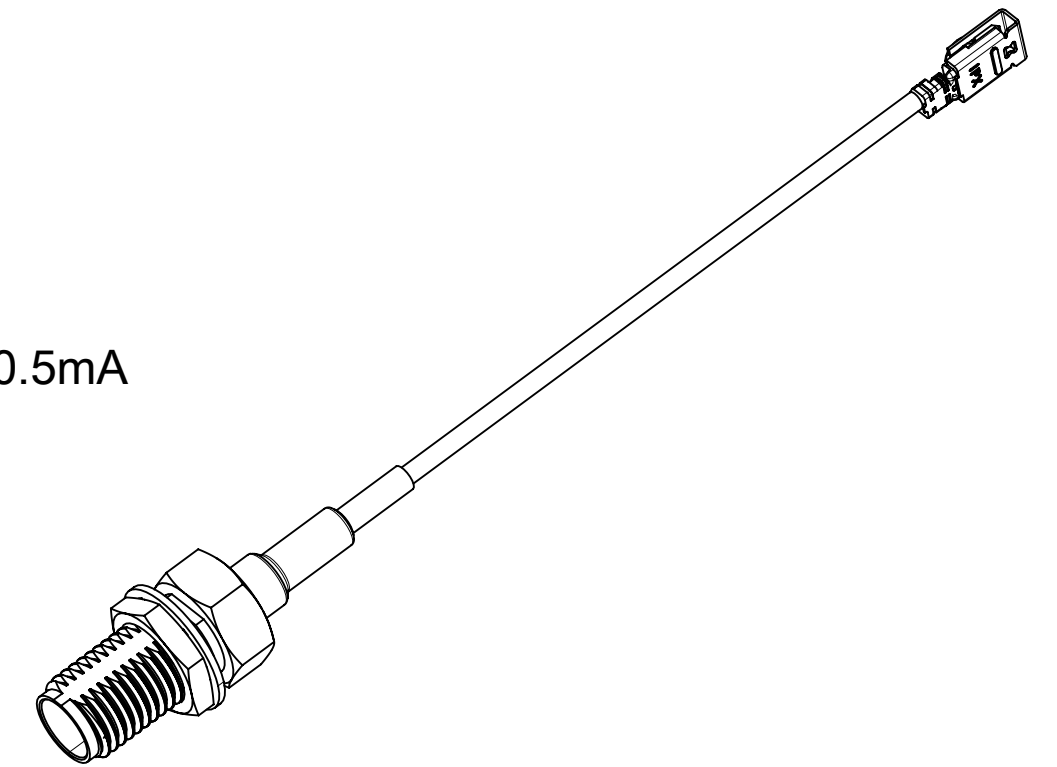
MATED HEIGHT: 2.90MM MAX

NOTES:

PACKAGING BY PLASTIC BAG

**PERFORMANCE REQUIRMENTS:**

1. FREQUENCY: DC~ 6GHz
2. IMPEDANCE: 50 OHMS
3. TEST 100% CONTINUITY
4. TEST 100% HI-POT: AC 350 V@0.5mA



**PART # 73230-6110**

FUNCTIONAL SYMBOLS										THIS DRAWING CONTAINS INFORMATION THAT IS PROPRIETARY TO MOLEX ELECTRONIC TECHNOLOGIES, LLC AND SHOULD NOT BE USED WITHOUT WRITTEN PERMISSION																					
DIMENSION UNITS		SCALE		CURRENT REV DESC: NEW RELEASE																											
mm		NTS		EC NO: 721426																											
GENERAL TOLERANCES (UNLESS SPECIFIED)										DRWN: JCHEN108 2022/07/07										CA,SMA JACK STR TO MHF® I LK WITH 1.32MM CABLE EWR#15293-A PRODUCT CUSTOMER DRAWING											
ANGULAR TOL ± °										CHK'D: MYLU07 2022/09/19																					
DIVISIONAL SYMBOLS										APPR: LCHEN03 2022/09/22										DOCUMENT NUMBER				DOC TYPE		DOC PART		REVISION			
4 PLACES ±										INITIAL REVISION:										732306110				PSD		000		A			
3 PLACES ±										DRWN: JCHEN108 2022/07/07										MATERIAL NUMBER				CUSTOMER		SHEET NUMBER					
2 PLACES ±										APPR: LCHEN03 2022/09/22										73230-6110				GENERAL MARKET		1 OF 1					
1 PLACE ±										DRAFT WHERE APPLICABLE MUST REMAIN WITHIN DIMENSIONS										THIRD ANGLE PROJECTION		DRAWING		SERIES		MATERIAL NUMBER		CUSTOMER		SHEET NUMBER	
0 PLACES ±												C-SIZE		73230		73230-6110		GENERAL MARKET		1 OF 1											