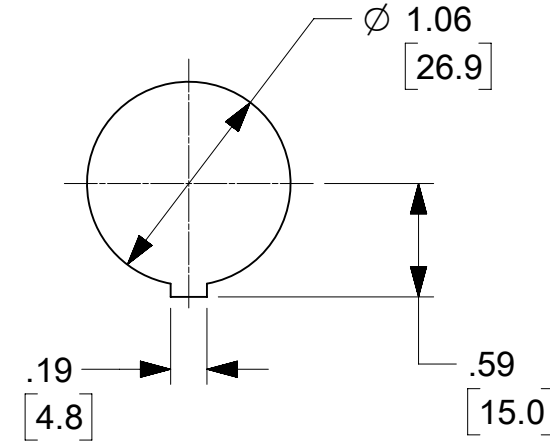
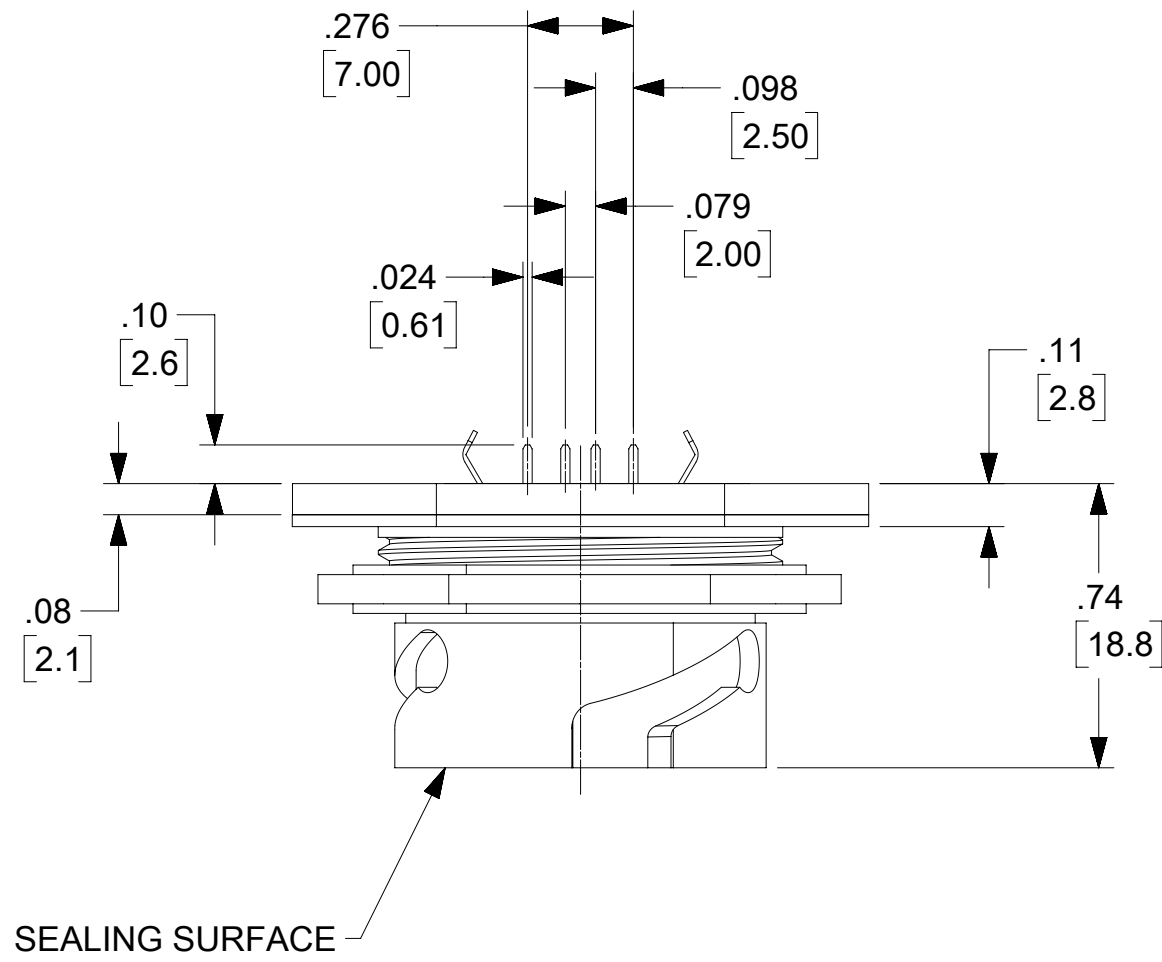
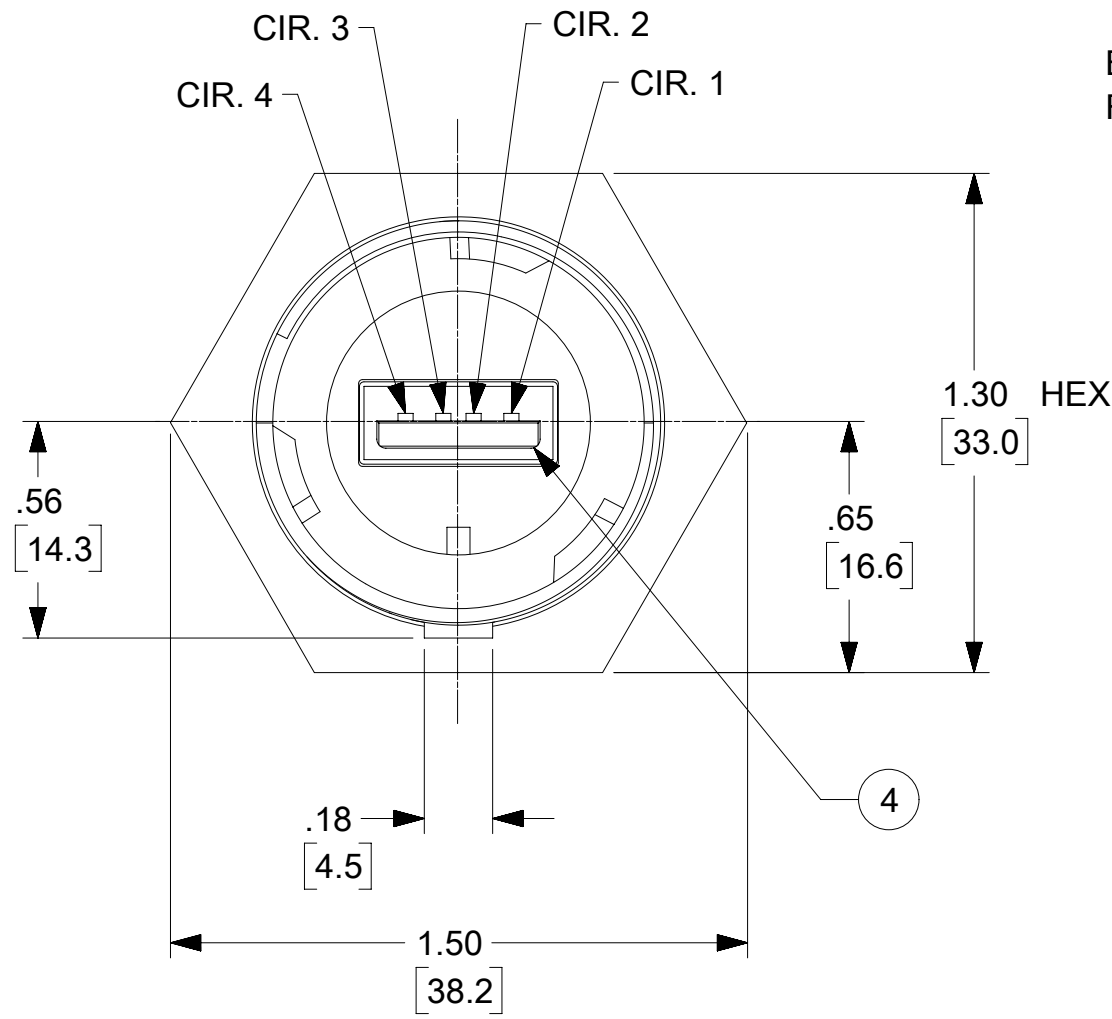
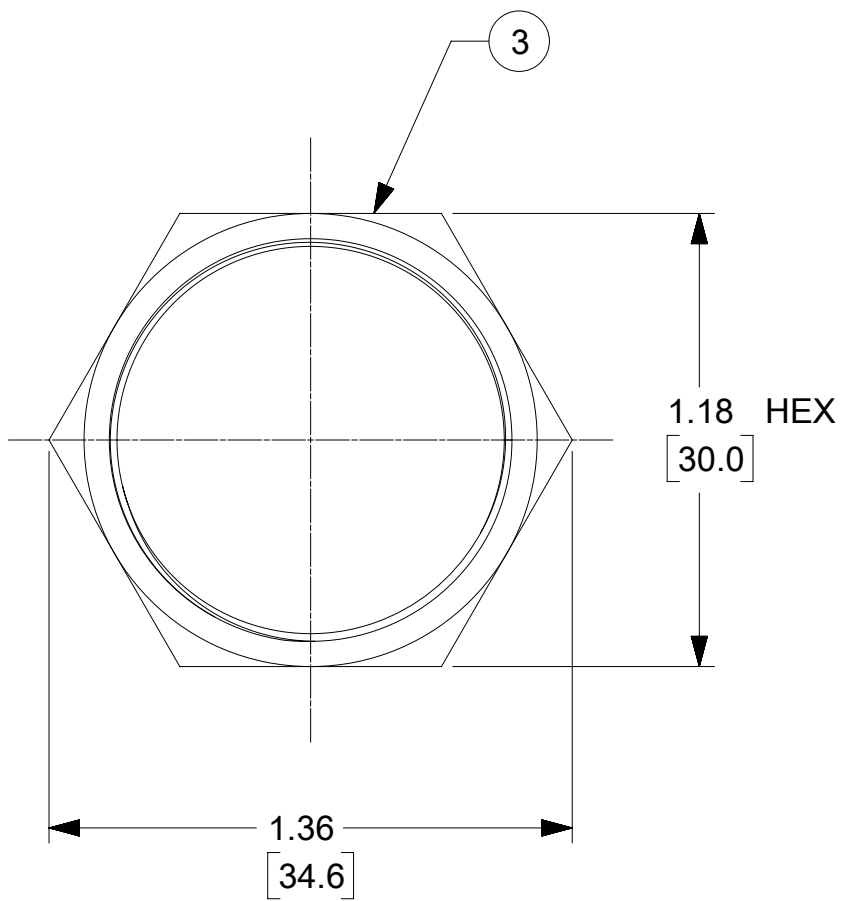
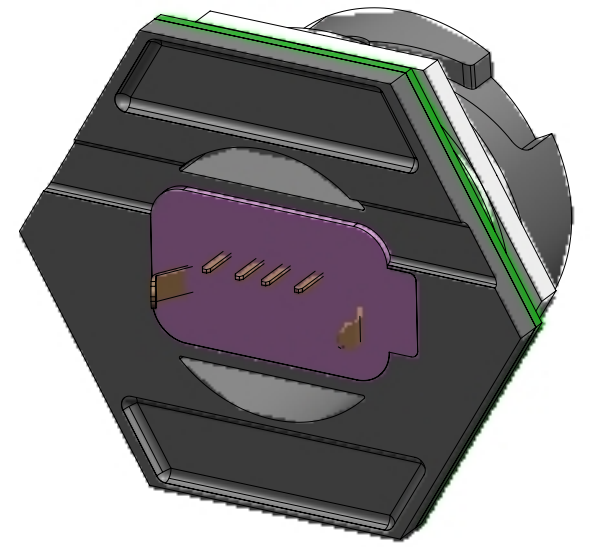
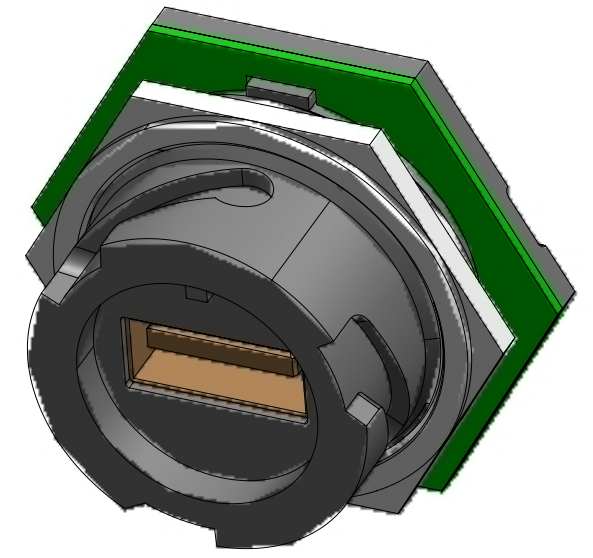


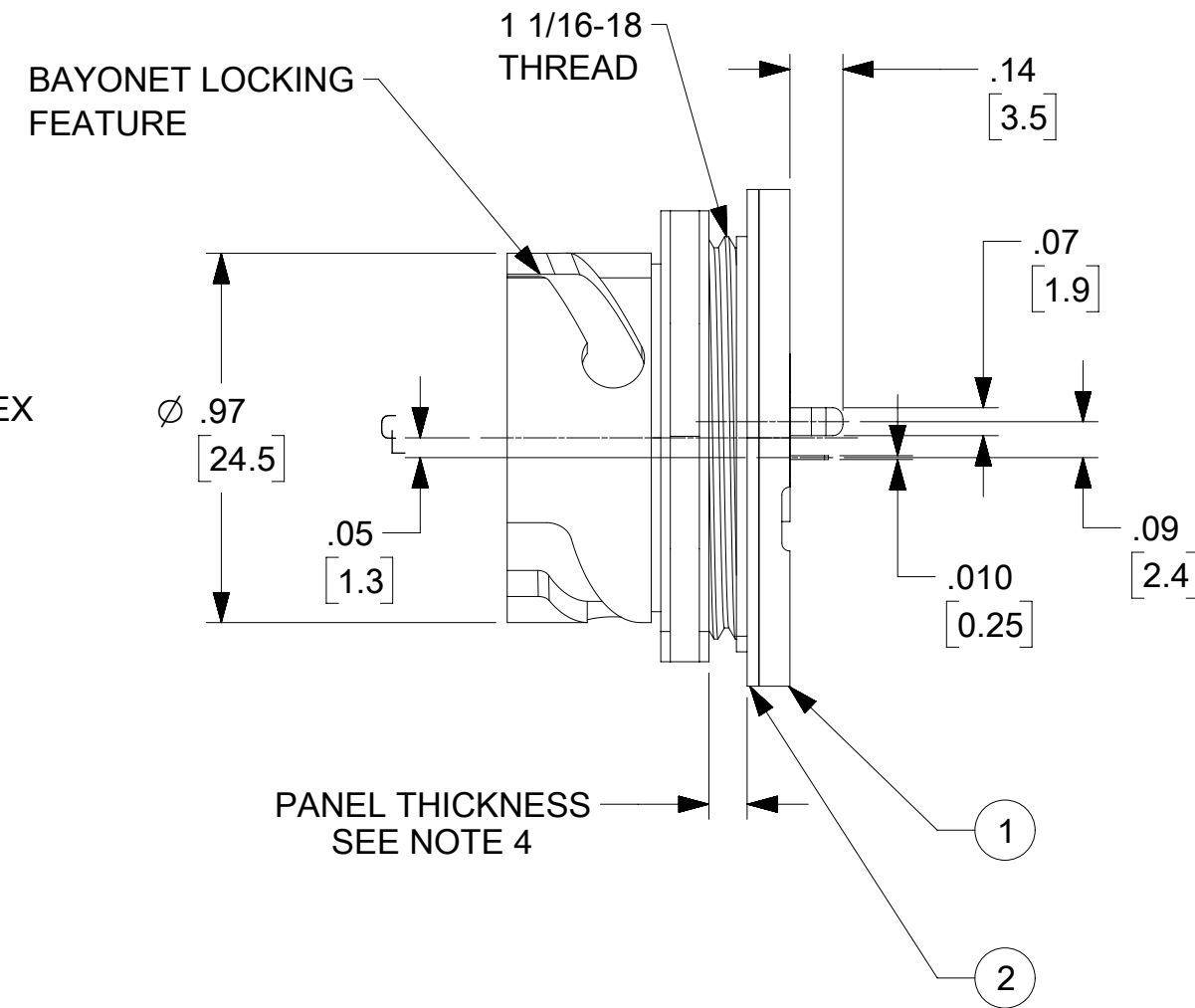
PCB LAYOUT



REF. PANEL CUTOUT
SCALE: 1X



FACE VIEW SHOWN
WITHOUT LOCKNUT
OR GASKET SEAL



1. MATERIALS: SEE TABLE
2. FINISHES: SEE TABLE
3. ELECTRICAL SPECS:
VOLTAGE: 30V
CURRENT: 1.0A
4. MAX PANEL THICKNESS: .10
5. PANEL NUT TORQUE: 24 ±4 IN. LBS
6. DIMS SHOWN ARE FOR REFERENCE
UNLESS NOTED OTHERWISE
7. PRODUCT SPEC: PS-84727-002

TABLE

ITEM	DESCRIPTION	MATERIAL	FINISH
4	USB-A RECEPTACLE	SHELL & CONT: Cu ALLOY	GOLD PLTD CONTACTS
3	LOCKNUT	NYLON	BLACK
2	GASKET SEAL	NEOPRENE	BLACK
1	USB RECEPTACLE, PANEL MOUNT	PBT	BLACK
ITEM	DESCRIPTION	MATERIAL	FINISH

QUALITY SYMBOLS		THIS DRAWING CONTAINS INFORMATION THAT IS PROPRIETARY TO MOLEX ELECTRONIC TECHNOLOGIES, LLC AND SHOULD NOT BE USED WITHOUT WRITTEN PERMISSION		DIMENSION UNITS	SCALE
▽ = 0	▽ = 0	2017/06/07	2017/07/19	INCH	2:1
▽ = 0	▽ = 0	GENERAL TOLERANCES (UNLESS SPECIFIED)		DRWN BY	DATE
▽ = 0	▽ = 0			R. STONE	2005/11/21
▽ = 0	▽ = 0			CHK'D BY	DATE
▽ = 0	▽ = 0			R. DERROSS	2006/01/05
▽ = 0	▽ = 0			APPR BY	DATE
▽ = 0	▽ = 0			R. DERROSS	2006/01/05
▽ = 0	▽ = 0			DRAWING SIZE	THIRD ANGLE PROJECTION
▽ = 0	▽ = 0			C	
▽ = 0	▽ = 0			PRODUCT CUSTOMER DRAWING	
▽ = 0	▽ = 0			SERIES	MATERIAL NUMBER
▽ = 0	▽ = 0			84729	847290009
▽ = 0	▽ = 0			CUSTOMER	
▽ = 0	▽ = 0			GEN MARKET	
▽ = 0	▽ = 0			DOCUMENT NUMBER	DOC TYPE
▽ = 0	▽ = 0			SD-84729-004	PSD
▽ = 0	▽ = 0			DOC PART	SHEET NUMBER
▽ = 0	▽ = 0			000	1 OF 1