

XLR CHASSIS CONNECTORS

3 PIN E SERIES - VERTICAL PCB MOUNT

Locking vertical PCB mount 3 pin chassis connector with plastic body for audio and lighting control.

Other Available Mounting Option: Horizontal PCB Mount



IO-XLR3-M-EV

IO-XLR3-F-EV

SPECIFICATIONS

PRODUCT

Gender: **Male (IO-XLR3-M-EV)**

Female (IO-XLR3-F-EV)

Contacts: **3**

ELECTRICAL

Capacitance Between Contacts: **≤ 2 pF**

Capacitance Between Contact and Ground: **≤ 2.5 pF**

Contact Resistance: **< 6 mΩ**

Insulation Resistance: **≥ 5000 MΩ**

Dielectric Strength: **1500V @ 60s**

Current Rating: **6A / 50V AC**

Grounding: **Separate Ground Terminal. Grounds to Panel.**

ENVIRONMENTAL

Standard Compliance: **IEC 61076-2-103**

UL Flammability: **UL94V-0**

Temperature Range: **-40°C ~ +70° C (-40°F ~ +158°F)**

MECHANICAL

Lifetime: **> 1000 Mating Cycles**

Wiring: **Vertical PCB Mount**

Locking Device: **Latch Lock**

Mounting Direction: **Rear**

Solderability: **Complies with IEC 60068-2-20**

MATERIAL

Contacts: **Gold Plated Brass**

Ground Terminal: **Nickel Plated Brass**

Shell: **Polyamide**

Shell Finish: **Black**

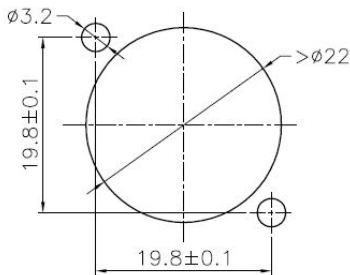
Push Button: **Nickel Plated Brass**

Latch: **Nickel Plated Carbon Steel**

Product specifications may change without prior notification



Panel Cutout



FEATURES & APPLICATIONS

E Series XLR chassis connectors offer the most cost-effective solution for design-in applications where the termination method is to a printed circuit board. The small footprint makes this our XLR receptacle with the highest packing density available. These connectors feature a compact all plastic housing with precision machined, one piece, gold plated contacts to help prolong the useful life of the connectors. They also come with a separate nickel plated ground pin that grounds the connector to the panel. The compact form factor of these connectors makes them perfect for situations where space saving is a priority or space for a connector is limited.

Available in 3, 4, or 5 pin, Male or Female variations with options for vertical or horizontal PCB mounting.

PART NUMBER BREAKDOWN:

IO-XLR3-M-EV
 Series Identifier
 IO-XLR3-M-EV
 Number of Pins
 IO-XLR3-M-EV
 Gender
 IO-XLR3-M-EV
 Series Identifier
 IO-XLR3-M-EV
 V = Vertical PCB Mount
 H = Horizontal PCB Mount

STANDARDS & CLASSIFICATIONS



Product specifications may change without prior notification