

RECEPTACLE

REMOVE OBSOLETE EC NO: UCP2016-4886 DRWNS:APPELDORN 2016/06/28 CHKD:MK/PPER 2016/06/29 APPR:FSM/TH 2016/07/06	QUALITY SYMBOLS	GENERAL TOLERANCES (UNLESS SPECIFIED)		DIMENSION STYLE	SCALE	DESIGN UNITS	THIRD ANGLE PROJECTION
	▽=0	mm	INCH	IN/MM	1:1	INCH	
	▽=0	4 PLACES ± ---	± ---	DRAWN BY	DATE	TITLE	
	▽=0	3 PLACES ± ---	± .007	GEP	1988/05/05	.125/(3.17) HOUSING PLUG AND RECEPTACLE 1 CIRCUIT	
	▽=0	2 PLACES ± 0.18	± .010	CHECKED BY	DATE	molex SD-42179-1*	
	1 PLACE ± 0.25	± ---	RW	1988/05/05	MATERIAL NO.		
	0 PLACE ±	±	APPROVED BY	DATE	SEE CHART		SHEET NO.
		ANGULAR ±1/2°					1 OF 3
		DRAFT WHERE APPLICABLE MUST REMAIN WITHIN DIMENSIONS					
				SIZE	THIS DRAWING CONTAINS INFORMATION THAT IS PROPRIETARY TO MOLEX INCORPORATED AND SHOULD NOT BE USED WITHOUT WRITTEN PERMISSION		

13

12

11

10

9

8

7

6

42179

4

3

2

1

J

I

H

G

F

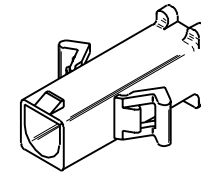
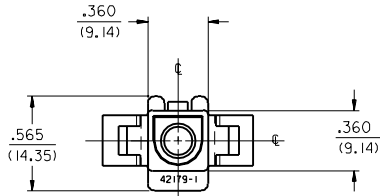
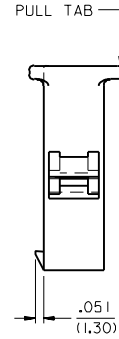
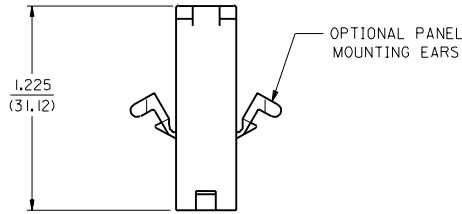
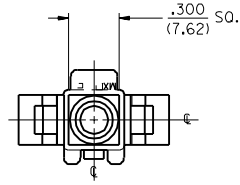
E

D

C

B

A



PLUG

G1	SEE SHEET 1
G	SEE SHEET 1
E	SEE SHT. 1
C	SEE SHT. 1
B	SEE SHT. 1
A	SEE SHT. 1
I	SEE SHT. 1
LTR.	REVISIONS

DIMENSIONS SHOWN (METRIC) INCH	
UNLESS OTHERWISE SPECIFIED TOLERANCES: ANGULAR ± .04° 10	
INCH	METRIC
3 PLACE ± .007	---
2 PLACE ± .010	± 0.18
1 PLACE ---	± 0.25
DRAFT WHERE APPLICABLE MUST REMAIN WITHIN DIMENSIONS	
DRWG. BY: CEP	CHKD. BY: RW
APP'D. BY: RAS	SCALE: 2 : 1

▽ = 0		▼ = 0		REVISE ONLY ON CAD SYSTEM	
TITLE .125/(3.17) HOUSING, PLUG AND RECEPTACLE, 1 CKT.				SHEET NO. 2	DATE 5/6/88
MOLEX INCORPORATED LITTLE ROCK, AR 60532 U.S.A.				DRWG. NO. SD-42179-1	SIZE CP C
SEE CHART				THIS DRAWING CONTAINS INFORMATION THAT IS PROPRIETARY TO MOLEX INC. AND SHOULD NOT BE USED WITHOUT WRITTEN PERMISSION.	

13

12

11

10

9

8

7

6

5

4

3

2

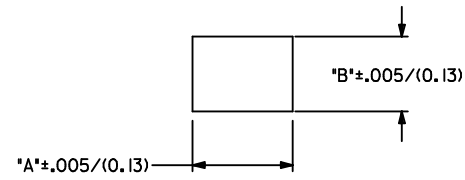
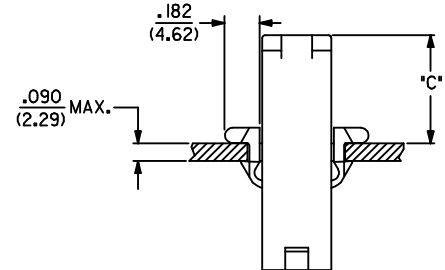
NO P.S.1

42179

A

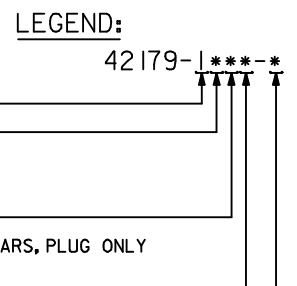
PLUG		
PART NO.	ENG. NO.	
03-12-2016	42179-IP1	
03-12-2015	42179-IP	
03-12-7014	42179-IPRD	OBSOLETE
03-12-7015	42179-IPBU	OBSOLETE
03-12-7016	42179-IPRD	OBSOLETE
03-12-2071	42179-IPBK	OBSOLETE
03-12-2072	42179-IPIGN	OBSOLETE
03-12-2073	42179-IPYW	OBSOLETE
03-12-2074	42179-IPIBU	OBSOLETE
03-12-2075	42179-IPIGY	OBSOLETE

RECEPTACLE		
PART NO.	ENG. NO.	
03-12-1016	42179-IR1	
03-12-6014	42179-IRRD	
03-12-6015	42179-IRIBU	OBSOLETE
03-12-2081	42179-IRBK	OBSOLETE
03-12-2082	42179-IRIGN	OBSOLETE
03-12-2083	42179-IRYW	OBSOLETE
03-12-2084	42179-IRIGY	OBSOLETE



RECOMMENDED HOLE CUTOUT

HOUSING	DIM. "A"	DIM. "B"	DIM. "C"
PLUG	.521/(13.23)	.440/(11.18)	.55/(14.0)



LEGEND:

CIRCUIT SIZE: _____

HOUSING TYPE: _____

P = PLUG

R = RECEPTACLE

MOUNTING EAR OPTION: _____

BLANK = WITH PREBENT EARS, PLUG ONLY

I = WITHOUT EARS

COLOR: _____

BLANK = 94V-2; TRANSLUCENT NATURAL COLOR

AM=AMBER BK=BLACK BU=BLUE

BN=BROWN GY=GRAY GN=GREEN

OR=ORANGE RD=RED YW=YELLOW

MATERIAL: _____

BLANK = NYLON 6/6, U.L. 94V-2

NOTES:

- PART ACCEPTS A MAXIMUM .250/(6.35) INSULATION DIA.
- FOR USE WITH MOLEX .125/(3.17) DIAMETER SERIES TERMINALS EXCEPT THE I219/I220 SERIES.

REMOVE OBSOLETE EC NO: UCP2016-4886 DRWNS:APPELDORN 2016/06/29 CHKD:MK1PPER 2016/06/29 APPR:FSMITH 2016/07/06	QUALITY SYMBOLS	GENERAL TOLERANCES (UNLESS SPECIFIED)		DIMENSION STYLE	SCALE	DESIGN UNITS	THIRD ANGLE PROJECTION
	▽=0	mm	INCH	IN/MM	1:1	INCH	
	▽=0	4 PLACES ± ---	± ---	DRAWN BY	DATE	TITLE	
	▽=0	3 PLACES ± ---	± .007	GEP	1988/05/05	.125/(3.17) HOUSING PLUG AND RECEPTACLE 1 CIRCUIT	
		2 PLACES ± 0.18	± .010	CHECKED BY	DATE	molex SD-42179-1* SHEET NO. 3 OF 3	
		1 PLACE ± 0.25	± ---	RW	1988/05/05		
		0 PLACE ±	±	APPROVED BY	DATE		
		ANGULAR ±1/2°		MATERIAL NO.	DOCUMENT NO.		
		DRAFT WHERE APPLICABLE MUST REMAIN WITHIN DIMENSIONS		SEE CHART			
				SIZE	THIS DRAWING CONTAINS INFORMATION THAT IS PROPRIETARY TO MOLEX INCORPORATED AND SHOULD NOT BE USED WITHOUT WRITTEN PERMISSION		