

CUSTOMER PRINT

PART NUMBER: 17280-XPG-300(CHX)

- NOTES:
1. ALL PARTS TO BE BULK PACKED
 2. CONTACTS SUPPLIED UNASSEMBLED
 3. SEE DRAWING HPMUSTD FOR HOLE PATTERN
 4. ALL DIMENSIONS ARE REFERENCE EXCEPT THOSE WITH A TOLERANCE

ASS'Y P/N	HEX NUT COLOR
17280-XPG-300CH1	WHITE
17280-XPG-300CH2	RED
17280-XPG-300CH3	BLUE
17280-XPG-300CH4	LIGHT GREY
17280-XPG-300CH5	YELLOW
17280-XPG-300CH6	MAROON
17280-XPG-300CH7	GREEN

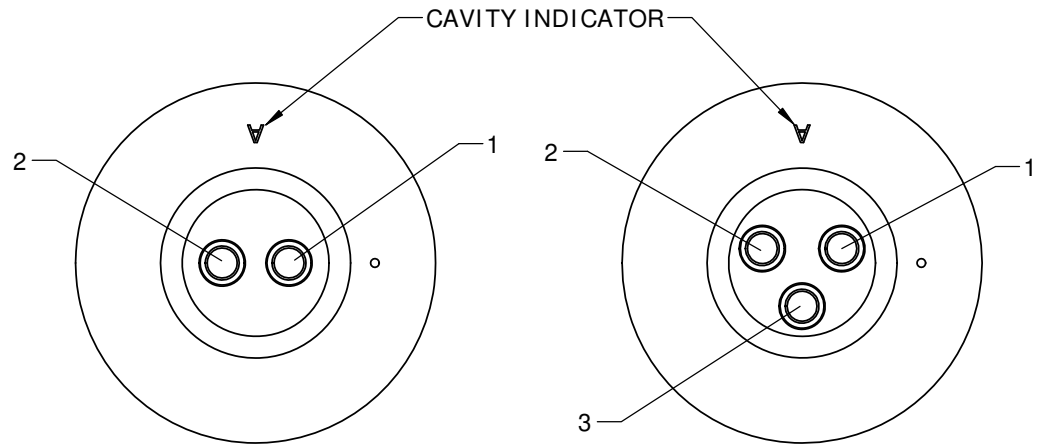
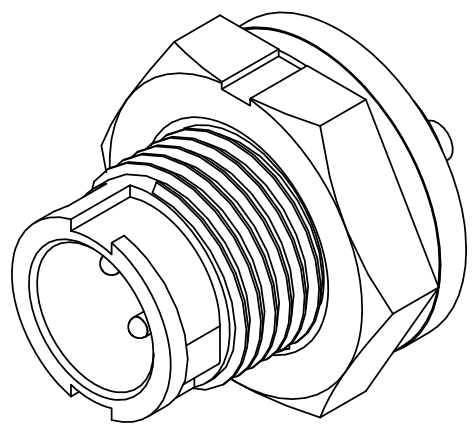
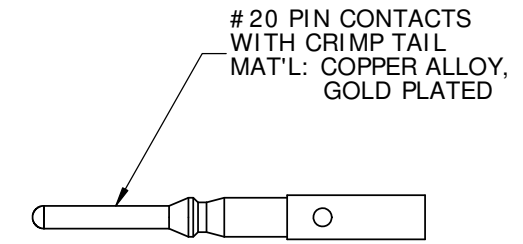
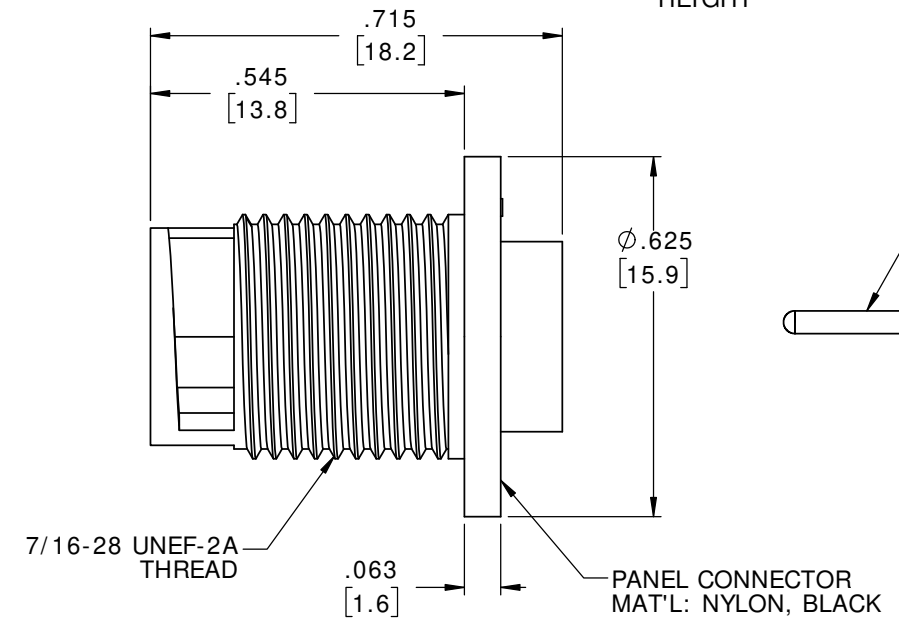
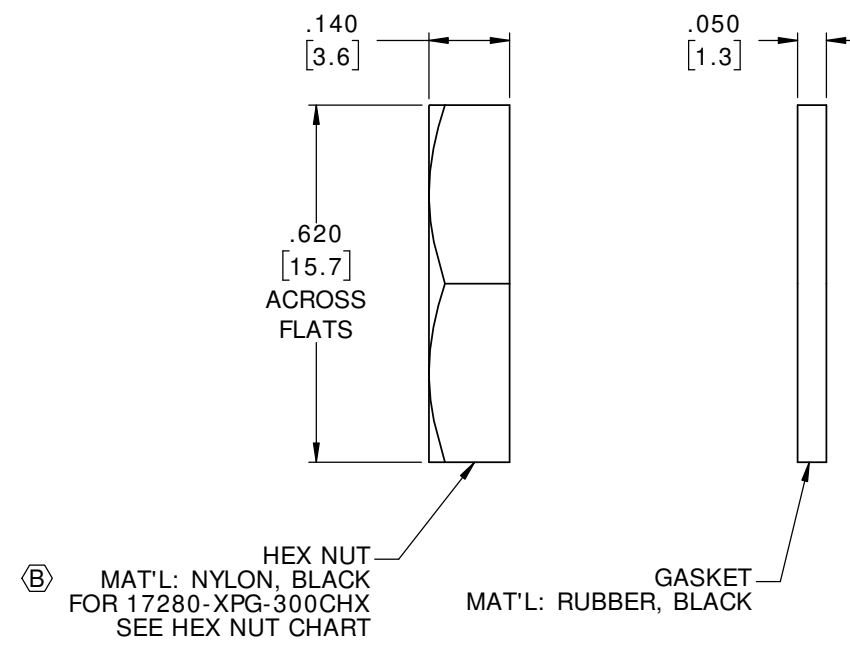
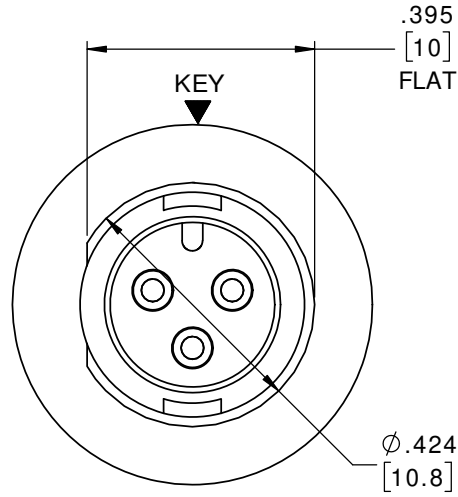
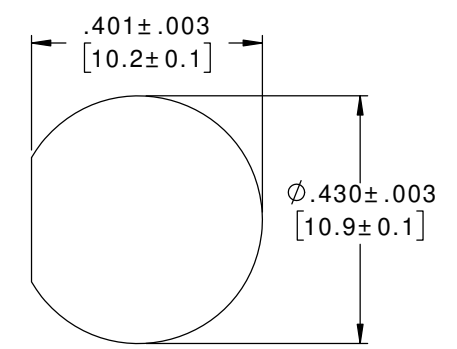
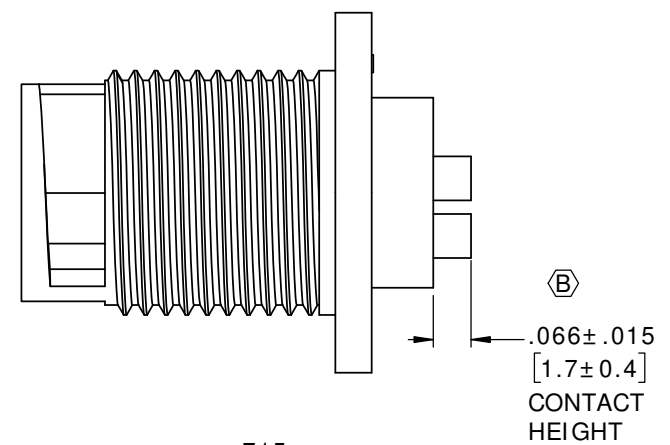
ASS'Y P/N	CONNECTOR P/N
17280-2PG-300	16285-2
17280-3PG-300	16285-3

CUSTOMER APPROVAL

THIS DOCUMENT CONTAINS CONFIDENTIAL INFORMATION PROPRIETARY TO CONXALL CORPORATION. ANY REPRODUCTION, DISCLOSURE, OR USE OF THIS DOCUMENT / INFORMATION IS EXPRESSLY PROHIBITED UNLESS AUTHORIZED IN WRITING BY CONXALL CORPORATION.

APPROVED BY: _____

DATE: _____



WIRE VIEW
17280-2PG-300

WIRE VIEW
17280-3PG-300

DIMENSIONS IN BRACKETS [] ARE IN MILLIMETERS UNLESS INDICATED

RoHS COMPLIANT

B	MA	04-17-20	ADDED HEX NUT CHART AND CONTACT HEIGHT. DRAWING P/N WAS 17280-XPG-300 PER DOR 20-E149SL-10
A	AN	07-28-11	DRAWING CREATED PER DOR 11-E149SL
REV.	INIT.	DATE	DESCRIPTION
	AN	07-28-11	ORIG. DRAWN BY: AN DATE: 07-28-11
			CHECKED BY:
			APPROVED BY:
			SCALE: NTS SIZE: B SHEET: 1 OF 1
			TITLE: PANEL CONNECTOR ASSEMBLY (2-3) #20 PIN CONTACTS, CRIMP TAIL MICRO-CON-X CUSTOMER: STANDARD PRODUCT
			FILE: 17280-XPG-300(CHX) DIRECTORY: SLW
			PART NUMBER: 17280-XPG-300(CHX) REV: B



ALL INFORMATION ILLUSTRATED IS THE PROPERTY OF CONXALL CORPORATION. UNAUTHORIZED DUPLICATION OR DISTRIBUTION OF THIS DOCUMENT IS PROHIBITED.

ALL UNITS ARE IN FEET, INCHES, FRACTION OF INCHES AND DECIMALS.