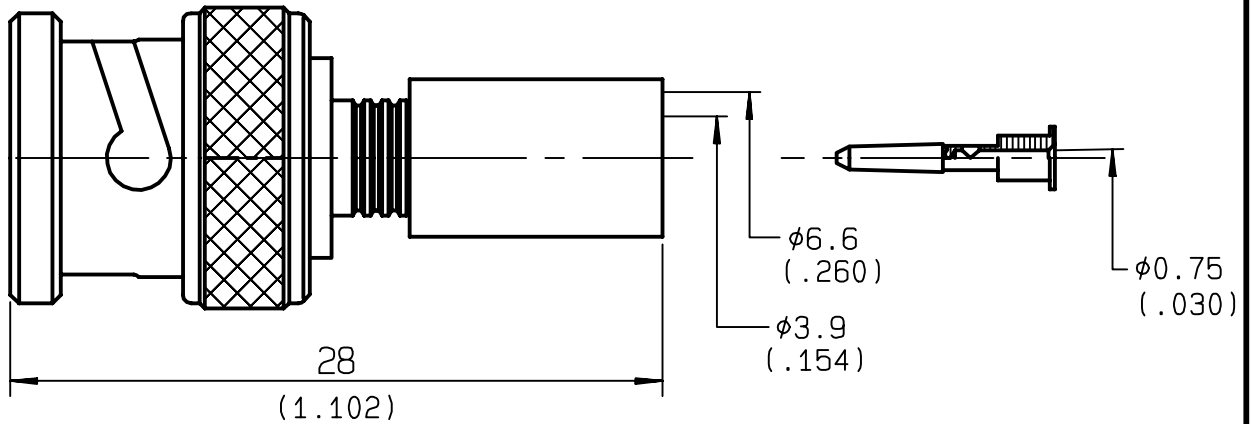


**STRAIGHT PLUG CRIMP TYPE  
CABLE 6/75+93**

**R142.085.000**  
**SERIES BNC 75**



NOMINAL IMPEDANCE	<b>75</b> Ω	CABLES : <b>KX 6A</b> <b>RG 59</b>
FREQUENCY RANGE	<b>0-1.5</b> GHz	
TEMPERATURE RATING	<b>-65/+165</b> °C	
V.S.W.R	<b>1.30</b> + <b>0</b> x F(GHz)Maxi	
RF INSERTION LOSS	<b>0.115</b> √F(GHz) dB Maxi	
VOLTAGE RATING	<b>500</b> Veff Maxi	
DIELECTRIC WITHSTANDING VOLTAGE	<b>1500</b> Veff Mini	
INSULATION RESISTANCE	<b>5000</b> MΩMini	
HERMETIC SEAL	<b>NA</b> Atm.cm <sup>3</sup> /s	
LEAKAGE (pressurized only)	<b>NA</b>	
MECHANICAL DURABILITY	<b>500</b> Cycles	OTHERS CHARACTERISTICS
WEIGHT	<b>9</b> gr	CABLE RETENTION <b>136</b> N Mini
SPECIFICATION	<b>537 686</b>	CENTER CONTACT RETENTION
		Axial force - mating end <b>27</b> N Mini
		Axial force - opposite end <b>27</b> N Mini
		Torque <b>NA</b> cm.N Mini
		RECOMMENDED TORQUES
		Mating <b>NA</b> cm.N
		Panel nut <b>NA</b> cm.N
		Clamp nut <b>NA</b> cm.N

CONNECTOR PARTS	MATERIALS	FINISH	(all values are given in micrometers)
BODY	BRASS	NICKEL 2	
OUTER CONTACT			
CENTER CONTACT	BRASS	GOLD 0.5 OVER NICKEL 2	
INSULATOR	PTFE	-	
GASKET	SILICONE RUBBER	-	
OTHERS PIECES	BRASS	NICKEL 2	

ISSUE	CREATION DATE	FILE PART-NUMBER	
<b>9904G00</b>			

TRIQUES

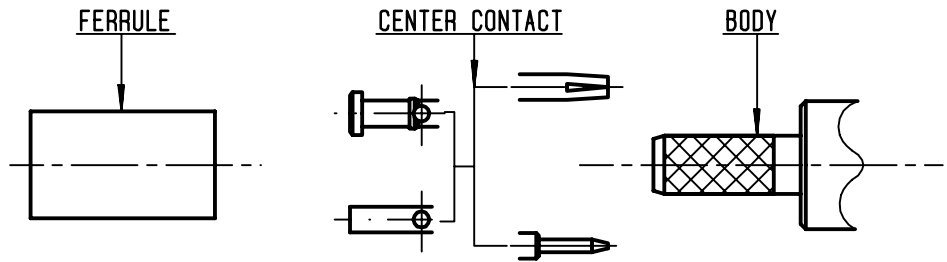
The information given here is subject to change without notice.  
Design changes may be in order to improve the product .

*Connect to the future*



**R142.085.000**

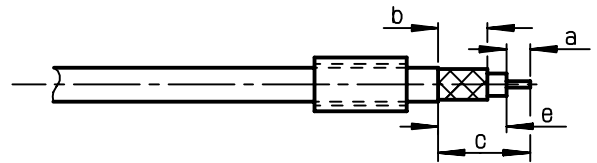
ISSUE 9904600 SERIES BNC 75



①

Slide ferrule onto cable  
Strip the cable .

-  
-



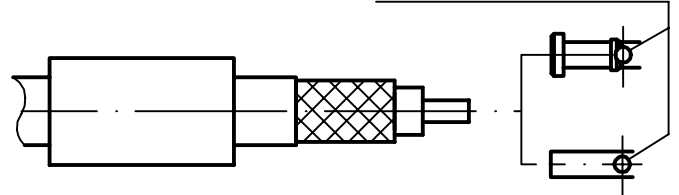
Stripping	a	b	c	d	e
inch	0.157	0.335	0.591	0	0
mm	4	8.5	15		

②

Slide center contact on until it bottoms against cable dielectric .  
Solder or crimp center contact .  
Crimping tool : R282 223 000 ( Hex. : 0.070 )  
or R282 293 000 ( M22520/5-01 )  
+ dies R282 235 013 ( M22520/5-13 ) .

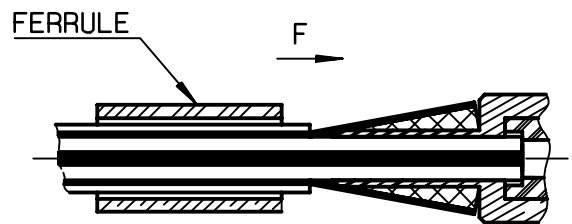
-

SOLDER / CRIMPING



③

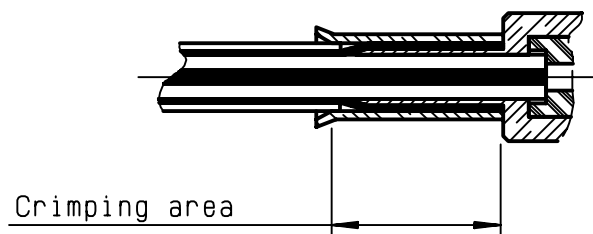
Fan the braid .  
Slide cable into the body until bottoms against insulator .  
Slide ferrule over the braid .  
(In direction F)



④

Crimp the ferrule with crimping tool R 282 223 000 ( Hex. : 0.255 ) or crimping tool R282 293 000 ( M22520/5-01 ) + dies R282 235 013 ( M22520/5-13 )  
Cut excess of braid if necessary .

-  
-  
-  
-



TRIQUES