

NOTES:

1. EACH BACKSHELL ASSEMBLY CONTAINS 2 SHELL HALVES AND HARDWARE ITEM SHOWN.
2. BACKSHELLS ARE SUITABLE FOR "D" SUBMINIATURE TYPE CONNECTORS IN SHELL SIZES 1,2 3 4 & 5.
3. MATERIALS-
SHELL HALVES- MOLDED COMPOSITE COMPOUND
FINISH-DOUBLE SIDED ELETROLESS NICKEL PLATING
INCLUDED HARDWARE- TRILOBULAR SELF-THREADING SCREWS, STAINLESS STEEL
4. ALL MATERIALS **RoHS** COMPLIANT.

ASSEMBLY INSTRUCTION:

1. TERMINATE WIRES TO CONNECTOR AND PREPARE CABLE SHEILD AS REQUIRED.
2. HOLD BACKSHELL HALVES TOGETHER MAKING SURE THE SHEILDING ENGAGES THE INTERNAL CABLE ENTRY EMI RIDGES, AND INSTALL BOTH SELF THREADING SCREWS. TAKE CARE TO NOT OVER TORQUE.

RT-BC0008-###CU STRAIGHT D-SUBMINIATURE COMPACTCOMPOSITE EMI BACKSHELL KIT

DASH #	Cable Entry(MM) Reference only	Cable O.D. Size (Inch)	Connector Size	Backshell Weight (lbs.)±.010 Ref. Only	A Max. Inches	B ± 0.005 Inches	C ± 0.020 Inches	D ± 0.020 Inches	E ± 0.010 Inches	F ± 0.010 Inches	G Max. Inches
-091CU ₁	9	.15-.36	1	.021 lbs	1.240	.984	.560	1.300	.480	.715	.750
-092CU ₂	9	.15-.36	2	.024 lbs	1.560	1.312	.590	1.300	.730	.807	1.010
-152CU ₂	15	.30-.58	2	.024 lbs	1.560	1.312	.590	1.300	.730	.807	1.010
-123CU ₂	12	.20-.48	3	.032 lbs	2.110	1.852	.590	1.300	1.155	.696	1.485
-163CU ₂	16	.40-.65	3	.032 lbs	2.110	1.852	.590	1.300	1.155	.696	1.485
-164CU ₂	16	.40-.65	4	.041 lbs	2.760	2.500	.590	1.300	1.625	.935	2.165
-165CU ₂	16	.40-.65	5	.048 lbs	2.660	2.406	.680	1.300	1.682	.807	2.125

TABULATION NOTES:

Refer To Dimension References A Through G.

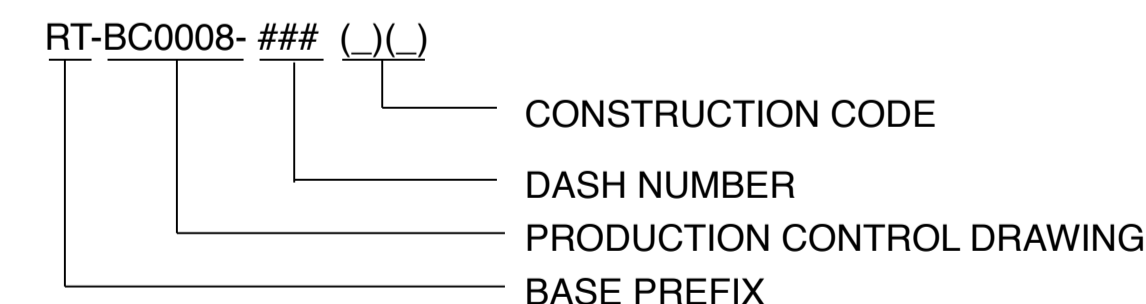
C = Denotes part is a compact design.

U = Denotes part is of Composite Construction.

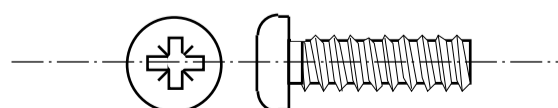
1 Alternate Side Mount Feature shall have thru holes that accommodate MS3367-4 miniature tie strap (hole shall be Ø 0 .115 inches).

2 Side Mount Feature shall have slots as shown that accommodate MS3367-1 tie strap (diameter shall be .225 x .115 inches).

RUSSTECH PART NUMBER EXPLANATION



INCLUDED HARDWARE



#4-20 X 3/8" PHILLIPS HEAD SCREW, STAINLESS STEEL, WITH 48-2 TRILOBULAR THREADS.

CONFIDENTIAL INFORMATION. THIS DOCUMENT AND CONTAINED INFORMATION ARE THE PROPERTY OF RUSSTECH ENGINEERING COMPANY, INC. THE RECIPIENT, BY RECEIPT AND RETENTION HEREOF, ACKNOWLEDGES THAT THE INFORMATION RECEIVED IS CONFIDENTIAL, DEVELOPED OVER TIME AT SIGNIFICANT EXPENSE, AND THAT DISCLOSURE THEREOF TO THIRD PARTIES WILL CAUSE IRREPARABLE HARM TO RUSSTECH. THE RECIPIENT, BY THE RECEIPT AND RETENTION OF SUCH INFORMATION, AGREES TO MAINTAIN SUCH INFORMATION IN CONFIDENCE, TO NOT DISCLOSE IT TO THIRD PARTIES, AND TO RETURN IT, AND ALL COPIES OR DERIVATIVES THEREOF, IN ANY FORM, TO RUSSTECH, UPON REQUEST.

WWW.RUSSTECHENGINEERING.COM

CAGE CODE 1EG24

TOLERANCES (UNLESS NOTED)

DECIMALS:
XX± .02
XXX± .005
ANGLES: ± 2°

CONCENTRICITY SAME AS ABOVE

SCALE: NONE

BY Don Fieberg
Released 6/13/2011



R U S S T E C H
Engineering Co., Inc.
16 TECHNOLOGY DRIVE 111
IRVINE, CA 92618

RT-BC0008-###CU STRAIGHT D-SUBMINIATURE COMPACT COMPOSITE EMI BACKSHELL

DRAWING NO. REV.

RC11065-S 9