

REV.	LOCAS	DESCRIPTION	DATE	DRAWN
05	△A	變更塑膠材質	2008.10.20	齊凡
06	△B	變更料號	2008.09.11	彭鳳城
07	△7	新增加端子角度尺寸控制	2010.05.11	沈松楨
08	△A	變更圖號修改注解并新增包裝選項	2011.03.30	黃明霞
H1	△H	加嚴端子角度尺寸控制(R-S211101)	2021.11.26	何東華

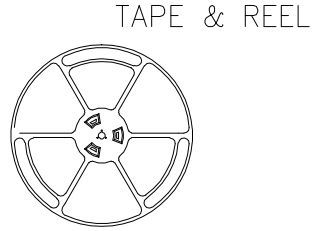
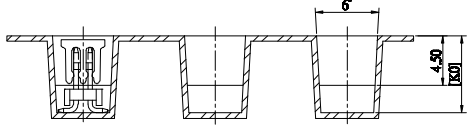
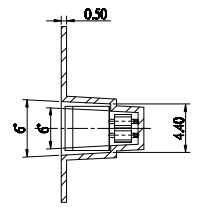
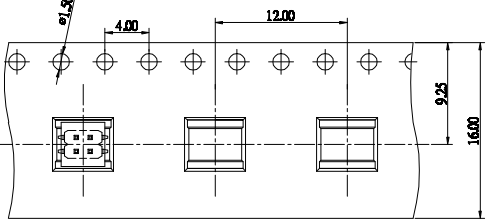
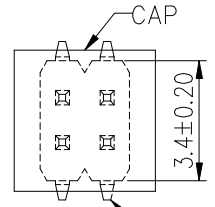
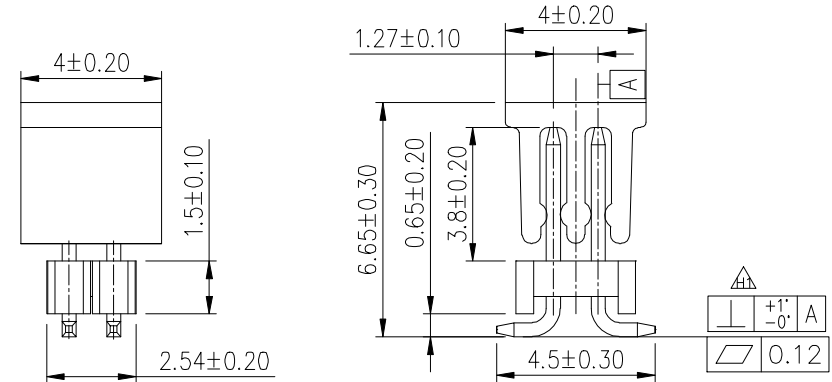
Recommended P.C.Board Layout
(Tolerance: ±0.05)

Specifications
 Current Rating: 1Amp
 Insulation Resistance: 1000MΩMin.
 Dielectric Withstanding: 300VAC
 Contact Resistance: 20mΩMax.
 Operating Temperature: -40°C to +105°C
 Materials
 Contact Material: Brass
 Insulator Material: High Temperature
 △ Thermoplastic, UL 94V-0 Nylon △△△△△
 or the equivalent material
 All materials must meet Greenconn
 requirement for environment protection.

Ordering Information △

G PEC209-02 XX A037 B 1 B X

Standard Plating Standard Packing
 02=Gold Flash C=Tube
 Selective Plating Selective Packing
 01=Tin D=Tape Reel
 05=Gold Flash/Tin △ F=Cap+Tape&Reel



Greenconn
 Website: www.greenconn.com
 E-mail: sales@greenconn.com

REV. H1	UNIT. mm	SCALE. 4:1
---------	----------	------------

3RD. ANG PROJ.

 PAGE. 1/1

GENERAL TOLERANCE	
X. ±5.0°	X. ±0.30
.X. ±3.0°	.X. ±0.25
.XX. ±2.0°	.XX. ±0.15
.XXX. ±1.0°	.XXX. ±0.10

DESIGNED: 何東華	DATE: 2021.11.26
CHECKED: 張春進	DATE: 2021.11.26
APPROVED: 林萬輝	DATE: 2021.11.26

DWG. NO. △	GPEC209-CA37BB
PART NO. △	GPEC209-02XXA037B1BX

TITLE.
 1.27 PIN HEADER
 DUAL ROWS SMT TYPE
 CONNECTOR