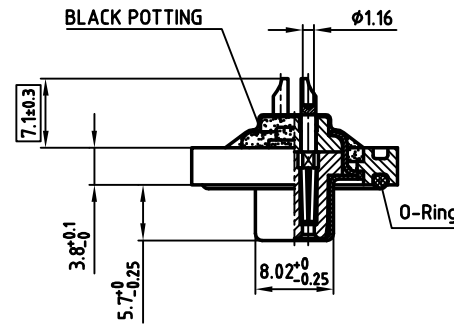
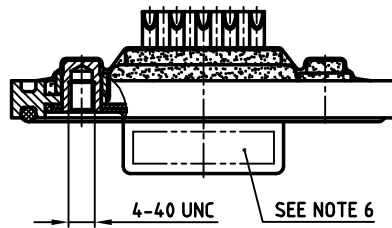
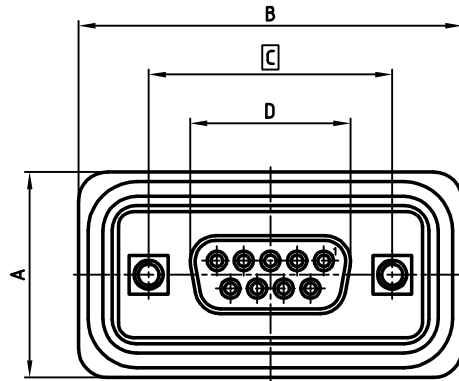


used for: D-SUB

| No. of pos. | A ^{+0.2} | B ^{+0.2} | C | D ^{-0.25} | PART NO. |
|-------------|-------------------|-------------------|---|--------------------|-----------------|
| 9 | 21.1 | 39.4 | 25.00 ^{+0.12} _{-0.13} | 16.46 | 4STD09SAM99B30X |
| 15 | 21.1 | 47.7 | 33.30 ^{+0.15} _{-0.1} | 24.79 | 4STD15SAM99B30X |
| 25 | 21.1 | 61.4 | 47.04 ^{+0.13} | 38.50 | 4STD25SAM99B30X |
| 37 | 21.1 | 77.9 | 63.50 ^{+0.13} | 54.96 | 4STD37SAM99B30X |



NOTES:

- METAL SHELLS: COPPER ALLOY; TIN PLATED
- INSULATORS: PBT GF; UL 94 V-0; BLACK
- CONTACTS: COPPER ALLOY
- PLATING: HARD GOLD OVER NICKEL
- MAXIMUM TORQUE VALUE FOR THREAD: 6" LBS
- CONNECTOR IS PART MARKED: PART-NO. CONEC Y/WW
- = CRITICAL DIMENSION: SPC

THIS DRAWING MAY NOT BE COPIED OR REPRODUCED IN ANY WAY, AND MAY NOT BE PASSED ON TO A THIRD PARTY WITHOUT WRITTEN PERMISSION. OWNERSHIP AND COPYRIGHT OF CONEC GMBH DO NOT ALTER CAD DRAWING BY HAND

| | | | | | | |
|-----------|-------------|--------------|---------------------------|---|--|--|
| tolerance | | | | scale: 2:1 | | |
| | | | | material: SEE NOTES | | |
| 1999 | date | name | | title: | | |
| drawn | 30.03. | Barcinski | | D-SUB FEMALE SOLDER CUP 9-37pos. WITH THREADED INSERT WATERTIGHT | | |
| appd. | 30.03. | Mickenbecker | | | | |
| norm | DIN 41652 | | dwg no: CAD/ REL.14 DIN-A | | | |
| d-old | | | 3 | | | |
| | | | | sh:2/2 | | |
| rev. | description | date | name | product no: SEE TABLE | | |