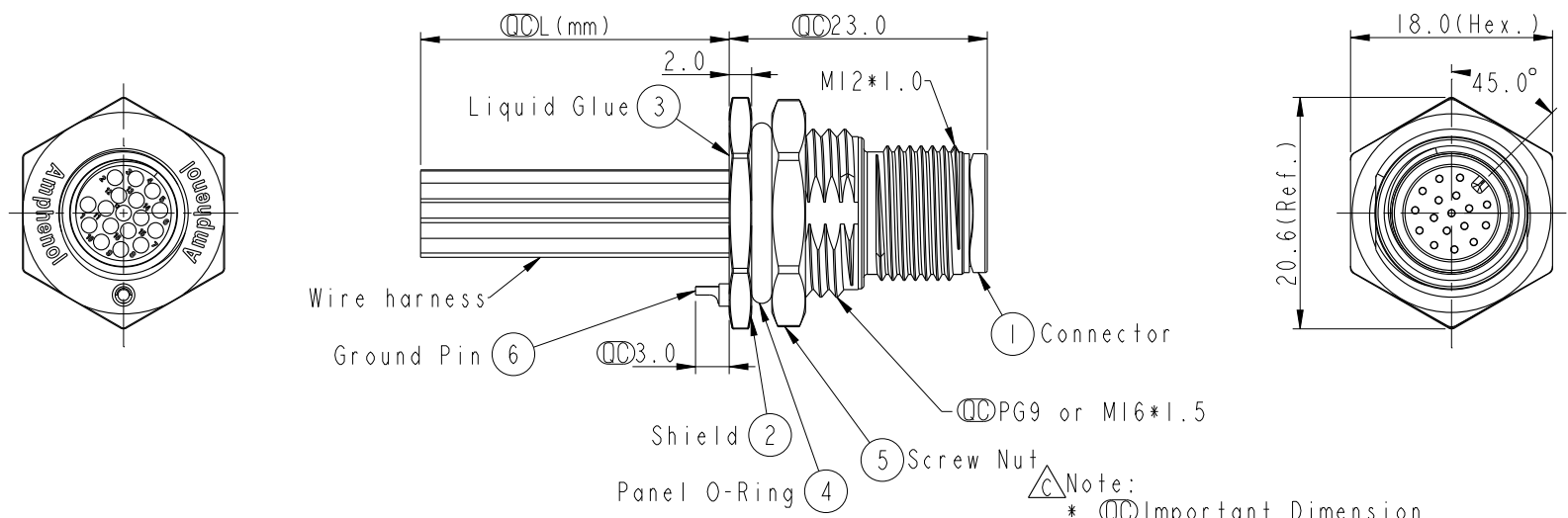
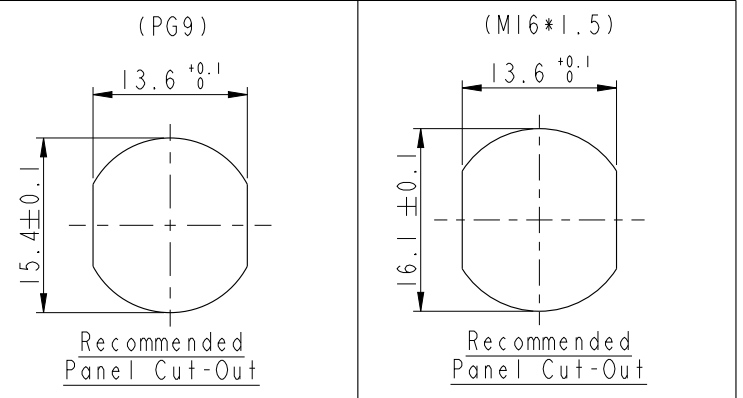


THIS DOCUMENT IS SUBJECT TO CHANGE WITHOUT NOTICE. IT IS CONFIDENTIAL AND A PROPERTY OF Amphenol LTW. DISCLOSURE TO THIRD PARTY HAS TO BE AUTHORIZED BY Amphenol LTW.

REV.	ECN NO.	DATE	SIGN	DESCRIPTION
A		2019/03/08	Allen Pan	
B	CI91681	2019/09/24	Vicky	Update Wire Tolerance
C	BOMR19110191	2019-11-27	Peng	$\triangle C$ X4



- $\triangle C$ Note:
- \*  $\text{CC}$  Important Dimension.
  - \* Waterproof Rate: IP68, IP69K.
  - \* Connector: Nylon+GF, Black.
  - \* Male Pin: Copper Alloy, Gold Plated.
  - \* Shield: Zinc Alloy, Nickel Plated.
  - \* Screw Nut: Zinc Alloy, Nickel Plated.
  - \* Panel O-Ring: Viton, Black.
  - \* Wire harness: ULI061
  - \* Rated Voltage: 3 & 4Pin 250V dc. or ac.  
5Pin 60V dc. or ac.  
6~12Pin, 17Pin 30V dc. or ac.
  - \* Rated Current: 3~5Pin 4A  
6~8Pin 2A  
10~12Pin, 17Pin 1.5A
  - \* Operating Temperature: -25~85°C
  - \* For Panel Thickness Max 4.5mm.
  - \* Nut Torque: 4-6 Kgf.cm.
  - \* Wire harness Tolerance: 150~300  $\pm 15$ mm  
301~1000  $\pm 20$ mm  
 $\triangle B$  Over1000 +50/-0mm

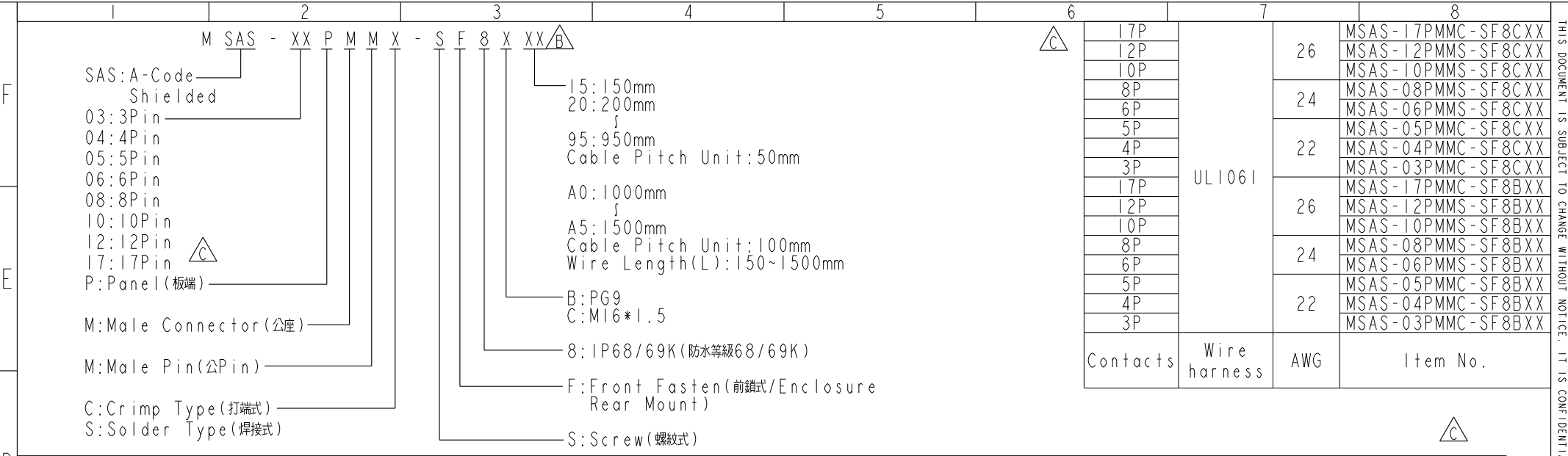


UNIT: mm			TITLE M12 A-Code Male Conn. Panel Front With Wire harness Shielded		
TOLERANCE .X $\pm 0.25$ .XX $\pm 0.1$ .XXX $\pm 0.05$ ANGLES $\pm 1^\circ$	SCALE 3:2	SIZE A4	SHEET 1 OF 2	REV. C	WC-REV. A.1
			$\text{CC}$ : Inspection item		

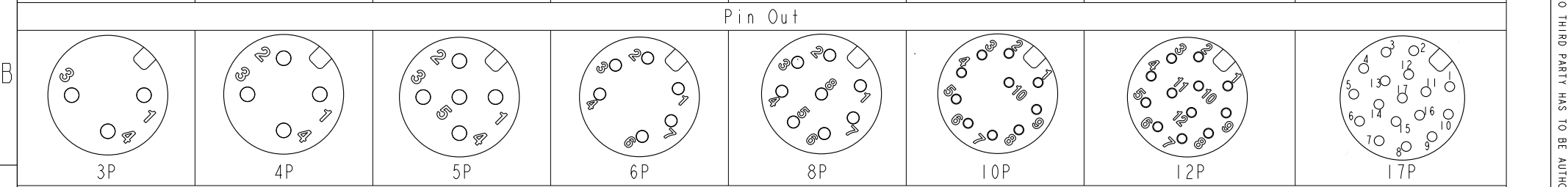
**Amphenol LTW**  
安費諾亮泰企業股份有限公司

ITEM NO	DRAWN BY Vicky	DATE 2019-09-24
DWG NO MSAS-XXPMMX-SF8XXX	CHECKED BY Rita	DATE 2019-09-24
CUSTOMER ALTW	APPROVED BY Max	DATE 2019-09-24

THIS DOCUMENT IS SUBJECT TO CHANGE WITHOUT NOTICE. IT IS CONFIDENTIAL AND A PROPERTY OF Amphenol LTW. DISCLOSURE TO THIRD PARTY HAS TO BE AUTHORIZED BY Amphenol LTW.



5	--	5	--	5	Gray	灰	5	--	5	Red	紅	5	Gray	灰	5	Red	紅	17	White/Gray	白/灰
4	Black	黑	4	Black	黑	4	Black	黑	4	Blue	藍	4	Black	黑	4	Yellow	黃	16	Yellow/Brown	黃/棕
3	Blue	藍	3	Blue	藍	3	Blue	藍	3	Pink	粉	3	Yellow	黃	3	Gray	灰	15	White/Yellow	白/黃
2	--	2	White	白	2	White	白	2	Green	綠	2	White	白	2	Green	綠	14	Brown/Green	棕/綠	
1	Brown	棕	1	Brown	棕	1	Brown	棕	1	Brown	棕	1	White	白	1	White	白	13	White/Green	白/綠
																		12	Red/Blue	紅/藍
																		11	Gray/Pink	灰/粉
																		10	Violet	紫
																		9	Black	黑
																		8	Red	紅
																		7	Blue	藍
																		6	Pink	粉
																		5	Gray	灰
																		4	Yellow	黃
																		3	Green	綠
																		2	Brown	棕
																		1	White	白
																		Pin #	Wire	Wire



Pin Assignments Front View

UNIT: mm  TOLERANCE .X ±0.25 .XX ±0.1 .XXX ±0.05 ANGLES ±1°	TITLE M12 A-Code Male Conn. Panel Front With Wire harness Shielded		<h1>Amphenol LTW</h1> <h2>安費諾亮泰企業股份有限公司</h2>		ITEM NO MSAS-XXPMX-SF8XXX	DRAWN BY Vicky	DATE 2019-09-24
	SCALE 3:2	SIZE A4			SHEET 2 OF 2	DWG NO MSAS-XXPMX-SF8XXX	CHECKED BY Rita
	REV. C	WC-REV. A.1	Inspection item	CUSTOMER ALTW	APPROVED BY Max	DATE 2019-09-24	