

PART NUMBER	"A"	"B"	"C"	"D"	LEAD "A" COLOR	LEAD "B" COLOR
FHAC0003ZXJA	89.3±5 (3.516)	89.3±5 (3.516)	6.35±2 (0.25)	6.35±2 (0.25)	RED	RED
FHAC0003ZXJB	89.3±5 (3.516)	89.3±5 (3.516)	6.35±2 (0.25)	6.35±2 (0.25)	RED WITH BLUE STRIPE	RED WITH BLUE STRIPE

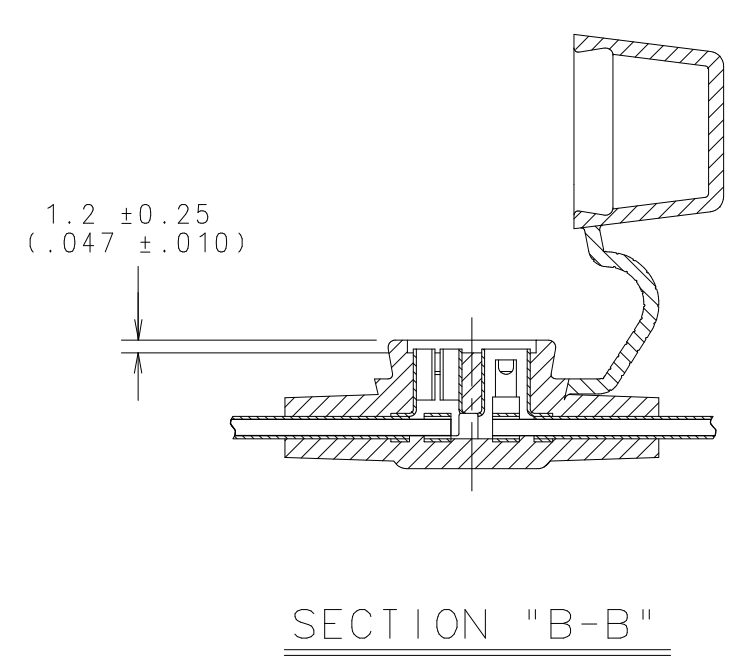
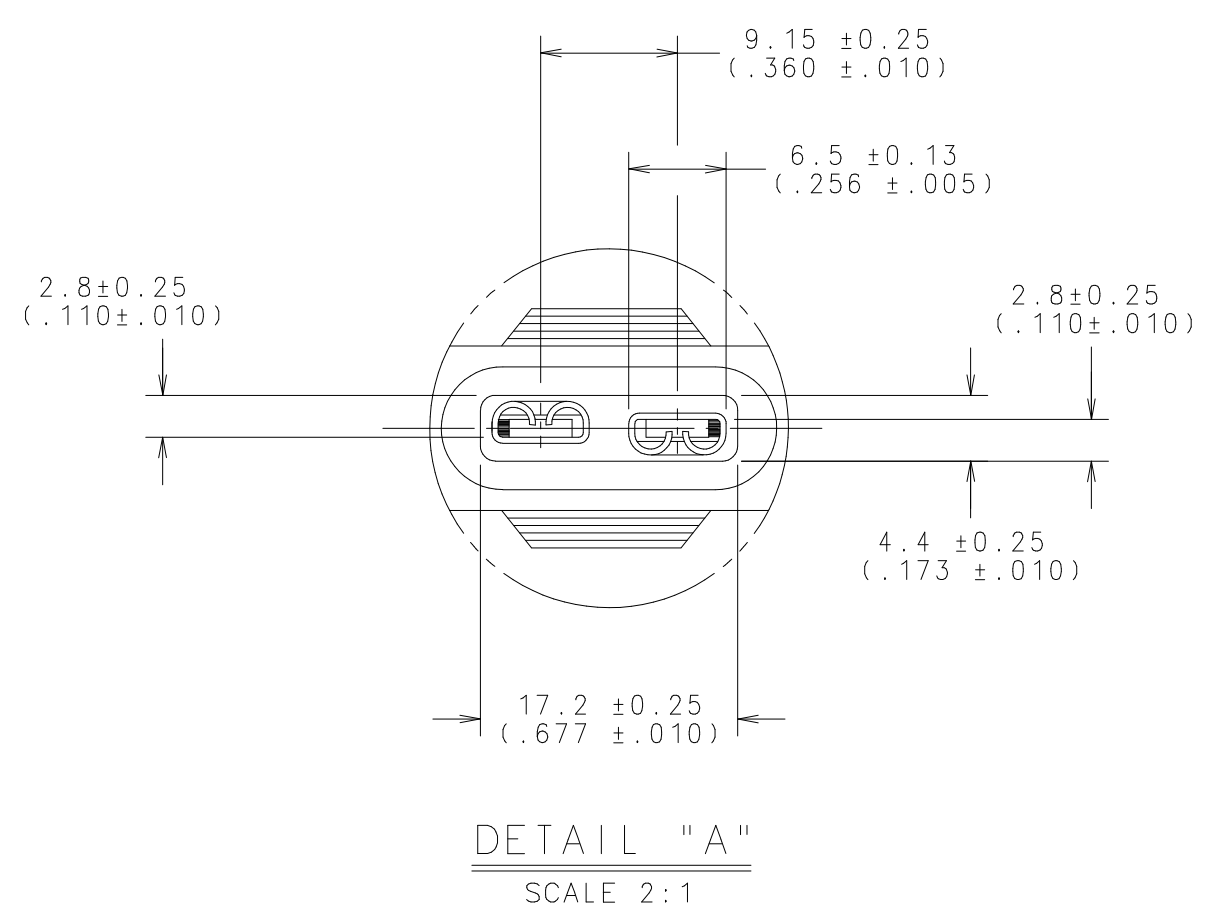
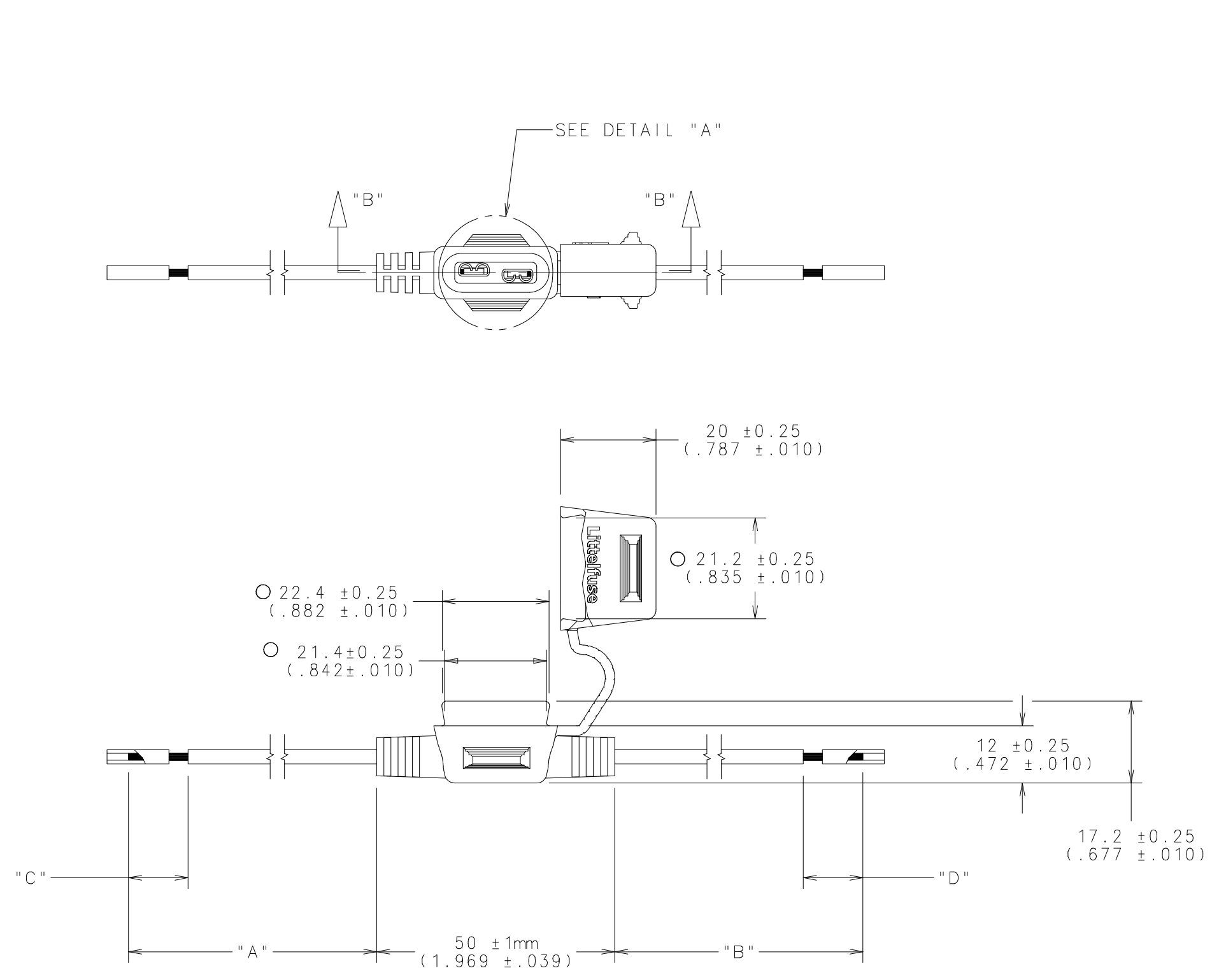
LTR	DATE	REVISION	CHK	APD
A	11/21/07	000218ER-RELEASE FHAC0003ZXJA AND FHAC0003ZXJB	DHM	

INSPECTION NOTES

- INSPECT STRIPPED WIRE FOR CUT STRANDS (NO CUT STRANDS ALLOWED)
- NO DAMAGE TO WIRE INSULATION
- NO SHORT SHOTS ON MOLDING
- FLASH OR GATING NOT TO EXCEED 0.13

NOTES

- HOLDER MATERIAL: BLACK TPV 251 80W232
- CONTACTS: C194 COPPER ALLOY: TIN-PLATED
- WIRE: 14 AWG STRANDED COPPER, 125°C RATED, OXL WIRE
- CRIMP: MUST MEET USCAR 21 STANDARD
- MAX. RATING: 20A, 32Vdc
- MAX. TEMPERATURE 105°C
- DATE CODE AND MOLD CAVITY NUMBER MARKED ON ALL UNITS



NO	COMPONENT NO	DESCRIPTION	QTY	U/M
BILL OF MATERIAL				
UNLESS OTHERWISE SPECIFIED, DIMENSIONS ARE IN MILLIMETERS. DIMENSIONS IN BRACKETS [] ARE INCHES.				
UNLESS OTHERWISE SPECIFIED, DIMENSIONS DO NOT INCLUDE PLATING.				
O	DENOTES CRITICAL CHARACTERISTICS.			
CPK	DENOTES CPK DIMENSIONS, MINIMUM CPK VALUE			
ST	DENOTES A CHARACTERISTIC THAT PROVIDES AN INDICATION OF PROCESS PERFORMANCE. PROCEDURE FOR MEASUREMENT AND TRACKING TO BE DEFINED IN UTILITY INSPECTION INSTRUCTIONS.			
CP	DENOTES CP DIMENSIONS, MINIMUM CP VALUE MUST BE WITHIN THE DIMENSIONAL LIMITATIONS SHOWN ON DRAWING AND INITIALLY LOCATED TO ALLOW FOR MAXIMUM TOOL LIFE.			
SEE NOTES				
COPIES TO				
1	9	18		
10	19	FINISH		
12	20	SCALE	FULL UNLESS NOTED	
13	21	DATE	SUPER DR	
14	23	CHK	DATE	
15	33	APPD	DATE	
16	43	B	FINISH GOOD WT GRAMS/PIECE	
17	53	TOLERANCE UNLESS OTHERWISE SPECIFIED		
TWO PLACE DEC			± .25 (.01) FRACTION ±	
THREE PLACE DEC			± .100 (.004) ANGULAR ± 1°	
3RD ANGLE PROJECTION				
TITLE ATO IN-LINE FUSEHOLDER				
UNION				
DES PLAINES, ILLINOIS 60016		REVISION	DRWG. NO.	FINAL SERIES
		A	FHAC0003ZXJ	

UNCONTROLLED DOCUMENT