



CABLE 377 RF: IPEX MHF I LK PLUG + RP SMA STRAIGHT BULKHEAD JACK WITH O-RING RATED TO IP67/68 + 1.37MM CABLE

SPECIFICATIONS:

1. I-PEX MHF I LK PLUG, P/N: 20670-001R-37 +3376-000.
2. ϕ 1.37MM COAXIAL CABLE, COLOR: BLACK.
3. RP SMA ST BULKHEAD JACK WITH O-RING RATED TO IP67/68, PN: RFCT-SMA008-F78, GOLD.

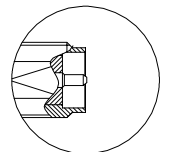
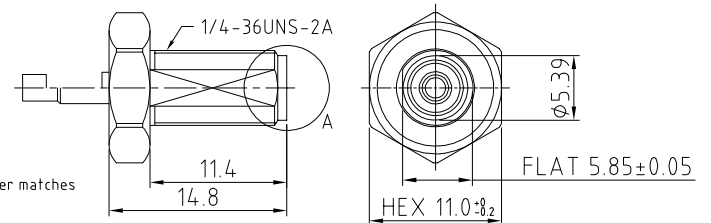
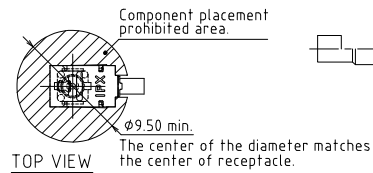
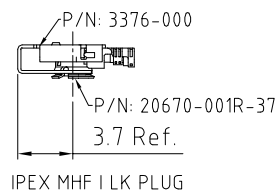
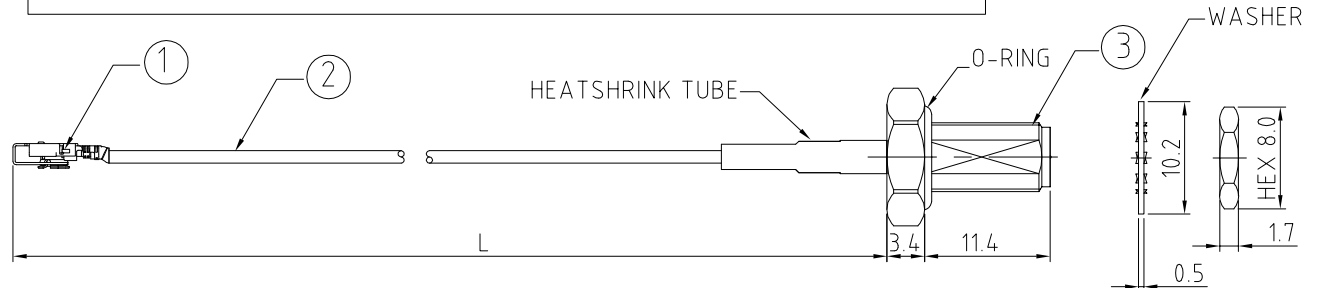
ENVIRONMENTAL:

- A. BULKHEAD MOUNTED CONNECTOR (RFCT-SMA008-F78) TESTED TO THE FOLLOWING SPECIFICATION:
- i. IP6X - DUST TIGHT - NO PARTICLE INGRESS.
 - ii. IPX7 WATERPROOF FOR 30 MINUTES UP TO 1M UNDERWATER.
 - iii. IPX8 WATERPROOF FOR 48 HOURS AT 1M UNDERWATER.
 - iv. IPX8 WATERPROOF FOR 12 HOURS AT 5M UNDERWATER.
 - v. PRESSURE TEST - 1 BAR FOR 10 SECONDS.

NOTES:

1. THE ORIENTATION OF CONNECTORS ON DRAWING IS FOR REFERENCE ONLY, IF THE ORDER IS LEFT BLANK THE CONNECTOR WILL NOT HAVE FIXED ORIENTATION.
2. FIXED ORIENTATION IS SUGGESTED FOR CABLE LENGTH 25MM TO 100MM. PLEASE SPECIFY THE FIXED ORIENTATIONS FROM THE ORDER CODE (F1, F2, ETC)
3. CONTACT GRAD CONN IF THE ORIENTATION YOU REQUIRE IS NOT SHOWN.
4. WORKING FREQUENCY RANGE: DC-3GHz.
5. OPERATING TEMPERATURE: -40°C~+85°C
6. IMPEDANCE: 50 OHM.

USAGE PRECAUTIONS: CABLES USING 'MICRO' COAX ARE DELICATE:
 (i) HANDLE WITH CARE.
 (ii) DO NOT TWIST; APPLY EXCESSIVE FORCES OR SHARP BENDS TO THE CABLE. DO NOT FORCEFULLY DEFORM WIRES.
 (iii) CONSULT CONNECTOR MANUFACTURER'S DATASHEETS FOR DETAILED NOTES ON HANDLING INSTRUCTIONS.



Detail A

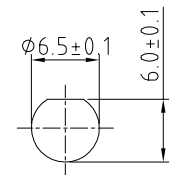
HOW TO ORDER
 CABLE 377 RF - X X X - X X - X - 1

"L" LENGTH IN MM:
 eg: 100MM = 100
 (MIN. 025-MAX.400)
 STANDARD = 100, 150, 200)
 Tolerance: <50mm : ±2mm.
 51-200mm: ±5mm.
 201-400mm: ±7mm.

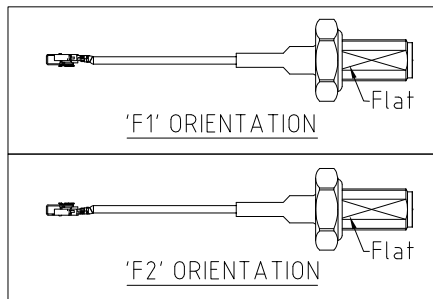
CABLE SIZE:
 1 = ϕ 1.37MM CABLE, COLOR: BLACK.

WASHER AND NUT OPTIONS:
 BLANK = SEPARATELY PACKED (STANDARD)
 A = ASSEMBLED WITH CONNECTOR

ORIENTATION OPTIONS:
 BLANK = DOES NOT HAVE A FIXED ORIENTATION
 F1 = MHF CONNECTION DOWN (L=25-100MM)
 F2 = MHF CONNECTION UP (L=25-100MM)
 (SEE NOTES 1, 2, 3 AND DIAGRAMS FOR MORE INFORMATION)



RECOMMENDED SMA MOUNTING HOLE



REV. DATE & DRN

10 20/07/20 - NYW RELEASE
 11 02/07/20
 12 07/07/20 - NYW
 13 30/09/20 - NYW
 14 04/12/20 - NYW

Scale: NTS	THIRD ANGLE	Unstated: X, .XX, .XXX, ANGLES	Tolerances: N/A, N/A, N/A, N/A
Drawn: CC			
App'd: XXX	Title: CABLE ASSEMBLY		
Date: 4 DEC '20	Revision: 1.4	Unit: mm	

IP67/68 Rated Cables

www.gradconn.com

Type: Cable 377 RF
CABLE 377 RF
Drawing Number:
Sheet 1 of 1
Drawing © E and O E