

4

3

2

1

THIS DRAWING IS UNPUBLISHED. RELEASED FOR PUBLICATION
 © COPYRIGHT ALL RIGHTS RESERVED.


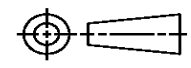
LOC		DIST		REVISIONS			
P	LTR	DESCRIPTION		DATE	DWN	APVD	
	K1	ECR-13-003552		26FEB2013	XZ	LZ	

Dimensioning and tolerancing per ASME Y14.5M-2009

REPLACED BY OCEAN STYLE APPLICATOR PART NUMBER 2151224-1

FOR REPLACEMENT PARTS FOR APPLICATOR 567336
 REFER TO ADDITIONAL PAGE(S). SPARE PARTS KIT (IF LISTED)
 WILL REMAIN AVAILABLE.

THE REPLACEMENT OCEAN STYLE APPLICATOR HAS THE
 SAME TERMINATOR/PRESS INTERFACE AS APPLICATOR
 567336

THIS DRAWING IS A CONTROLLED DOCUMENT.		DWN X. ZHAO	 TE Connectivity			
DIMENSIONS:		CHK L. ZHANG				
		APVD L. ZHANG	NAME MINIATURE QUICK CHANGE APPLICATOR SIDE FEED (MINI AMP-IN)			
TOLERANCES UNLESS OTHERWISE SPECIFIED:		PRODUCT SPEC	APPLICATION SPEC			
0 PLC ± 1 PLC ± 2 PLC ± 3 PLC ± 4 PLC ± ANGLES ±		WEIGHT	SIZE A3	CAGE CODE	DRAWING NO ©- 567336	RESTRICTED TO
MATERIAL		FINISH		SCALE	SHEET 1 OF 2	REV K1

Dimensioning and tolerancing per ASME Y14.5M-2009

8 7 6 5 4 3 2 1

THIS DRAWING IS UNPUBLISHED.		RELEASED FOR PUBLICATION	
COPYRIGHT BY TYCO ELECTRONICS CORPORATION. ALL RIGHTS RESERVED.			
PART NUMBER	REV	FIRST USED	
567336-1	K	-	
567336-2	K	-	
567336-3	K	-	
7-567336-7	J	-	

-1	LEADMAKER	MECH POST FEED
-2	BENCH MODEL K	MECH PRE FEED
-3	BENCH MODEL G	MECH PRE FEED
-77	-	SPARE TOOL KIT

LOC	DIST	REVISIONS			
A	66	REV	DESCRIPTION	DATE	BY
		K	ECR-07-000810	1-2007	MY GB

TERMINAL NAME:					
770565-1	CRIMPING DATA				
770565-2	PAD LTR	CRIMP HEIGHT	WIRE SIZE		
	A	.042 ± .002 [1.07 ± 0.05mm]	18		
	B	.036 ± .002 [0.91 ± 0.05mm]	20		
	C	.032 ± .002 [0.81 ± 0.05mm]	22		
	D	NOT	USED		
	CRIMP	SIZE	TYPE	RANGE	
	WIRE	.062	F	22-18	
	INSUL	.110	F	.060-.110	
WIRE STRIP LENGTH	TERM APPL SPEC	FEED	APPL INST	SET UP GAGE	LAYOUT
.135-.165	114-1016	.330	AI 8040	458637-1	L1343

-	2	2	2	-	5-354779-0	PIN, WIRE DISC (.3240)C	129
-	2	2	2	-	4-354779-2	PIN, WIRE DISC (.3200)B	127
-	2	2	2	-	3-354779-0	PIN, WIRE DISC (.3140)A	126
-	1	1	1	-	986950-1	WASHER, FLAT PRECISION	125
-	REF	REF	REF	-	21045-3	RING,RET "C"(.187φ)FEED FINGER PIN	124
							123
-	REF	REF	REF	-	5-21028-1	PIN,SLT SPR(.125φx.50)ADJ ROD	122
-	1	1	1	-	4-21028-0	PIN,SLT SPR(.093φx.75)ST GUIDE PL	121
-	REF	REF	REF	-	1-21030-1	PIN,DOWEL(.187φx.50)LEVER	120
-	REF	REF	REF	-	1-21030-6	PIN,DOWEL(.187φx1.25)HOUSING	119
							118
-	1	1	1	-	21024-5	WASHER,LOCK(NO.10)ADJ BLOCK	117
-	REF	REF	REF	-	21024-5	WASHER,LOCK(NO.10)ADJ PLATE	116
-	REF	REF	REF	-	21024-5	WASHER,LOCK(NO.10)FEED GUIDE ROD	115
-	2	2	2	-	21024-2	WASHER,LOCK(NO.4)FRONT STRIP GUIDE	114
							113
							112
-	2	2	2	-	21024-4	WASHER,LOCK(NO.8)STRIPPER	111
-	REF	REF	REF	-	21899-4	WASHER,FLAT(5/16 DIA)SCREW ADJ	110
							109
							108
-	REF	REF	REF	-	21018-5	NUT,HEX(6-32)FEED ADJ	107
							106
-	1	1	1	-	22353-8	SCR,SHLD(φ.188x.250) DRAG LEVER	105
							104
-	1	1	1	-	21009-2	SCR,SKT SET(1/4-20x.25LOC-WEL)RAM	103
-	2	2	2	-	21017-2	SCR,DRIVE(#2x.19)ID PLATE	102
-	REF	REF	REF	-	6-23715-5	SCR,PAN HD(6-32x1.50)FEED ADJ	101
							100
-	1	1	1	-	461264-1	PLATE, IDENTIFICATION	99
-	2	2	2	-	5-21006-6	SCR,SET(10-32x.75)DRAG	98
-	1	1	1	-	22733-8	SCR,BHC(8-32x.38LOC-WEL)ANVIL	97
-	REF	REF	REF	-	2-21002-9	SCR,BHC(10-32x.75)CAP	96
-	REF	REF	REF	-	2-22733-8	SCR,BHC(1/4-20x.62)HOUSING	95
-	REF	REF	REF	-	2-21002-7	SCR,BHC(10-32x.50)SG ADJ BLOCK	94
-	6	6	6	-	2-21002-2	SCR,BHC(8-32x.50)SHEAR	93
							92
							91
-	1	1	1	-	1-21002-7	SCR,BHC(6-32x.38)CAM	90
							89
							88
							87
-	1	1	1	-	2-22603-0	SCR,HEX HEAD(8-32x.31)FEED FINGER	86
-	2	2	2	-	1-21000-3	SCR,SKT CAP(4-40x.25)F STRIP GUIDE	85
-	1	1	1	-	2-21000-7	SCR,SKT CAP(8-32x.50)STRIPPER	84
-	REF	REF	REF	-	3-21000-7	SCR,SKT CAP(10-32x.75)FEED ROD GD	83
-	REF	REF	REF	-	3-21000-6	SCR,SKT CAP(10-32x.62)FEED ADJ BLK	82
-	1	1	1	-	3-21000-4	SCR,SKT CAP(10-32x.38)SG ADJ BL	81
-	REF	REF	REF	-	3-21000-4	SCR,SKT CAP(10-32x.38)PIVOT BLOCK	80
-	REF	REF	REF	-	455755-1	GUARD ASSY	79
-	REF	REF	REF	-	679532-1	INSERT GUARD	78
							77
							76
							75
-	1	1	1	-	690603-1	SPRING, ASSIST	74
-	1	1	1	-	23030-1	SCR,SKT CAP(6-32x.25)CP DISC	73
-	REF	REF	REF	-	458109-1	WASHER, SPECIAL	72
-	REF	REF	REF	-	690517-1	SPACER	71
-77	-3	-2	-1	U/M	PART NO	DESCRIPTION	ITEM NO

-	REF	REF	REF	-	22594-8	NUT, HEX	70
-	REF	REF	REF	-	240628-1	PLATE, ADJUSTMENT	69
-	REF	REF	REF	-	240626-1	SHAFT, PIVOT	68
-	REF	REF	REF	-	240633-1	BUSHING	67
-	REF	REF	REF	-	455680-1	LEVER, INTERMEDIATE	66
-	REF	REF	REF	-	240629-1	BLOCK, PIVOT	65
-	REF	REF	REF	-	240632-2	SCREW, ADJUSTMENT FEED ROD	64
-	REF	REF	REF	-	240659-3	PIN, CAM ROLLER	63
-	REF	REF	REF	-	240658-1	ROLLER, CAM	62
-	REF	REF	REF	-	454398-2	ROD, FEED	61
-	REF	REF	REF	-	454178-1	GUIDE, FEED ROD	60
-	REF	REF	REF	-	454220-1	CAP, HOUSING	59
-	REF	REF	REF	-	454485-1	HOUSING	58
							57
-	1	1	1	-	458537-2	PAWL, FEED	56
-	REF	REF	REF	-	240624-1	PIN, FEED FINGER	55
-	REF	REF	REF	-	691499-1	SPRING, FEED FINGER	54
-	REF	REF	REF	-	690541-1	FINGER, FEED	53
-	REF	REF	REF	-	455679-1	LEVER, TERMINAL FEED ARM	52
							51
							50
-	1	-	-	-	690602-6	CAM, PRE-FEED 1 5/8 STROKE	49
-	-	1	-	-	690602-5	CAM, PRE-FEED 1 1/8 STROKE	48
-	-	-	1	-	690501-4	CAM, POST-FEED 1 5/8 STROKE	47
-	1	1	1	-	459456-1	APPLICATOR, BASIC (SUBASSY)	46
-	1	1	1	-	690191-1	PLUG, NYLON	45
-	1	1	1	-	455673-1	RAM	44
-	1	1	1	-	690125-1	WASHER, LAMINATED	43
-	1	1	1	-	690124-1	WASHER, RAM	42
-	1	1	1	-	7-21002-9	BOLT, CRIMPER (5/16 X 1.00)	41
-	1	1	1	-	23241-6	BALL, STEEL	40
-	1	1	1	-	690170-1	SPRING, COMPRESSION	39
-	1	1	1	-	690142-1	DISC, INSULATION	38
-	1	1	1	-	354777-1	DISC, WIRE	37
-	1	1	1	-	22480-5	WASHER, SPRING	36
-	1	1	1	-	690212-1	POST, RAM	35
-	1	1	1	-	469465-1	STOP, WIRE	34
-	REF	REF	REF	-	455675-1	PLATE, BASE	33
-	1	1	1	-	690432-3	SCREW, ADJUSTMENT	32
							31
-	REF	REF	REF	-	455689-1	BLOCK, STRIP GUIDE ADJ	30
-	1	1	1	-	843869-1	PLATE, STRIP GUIDE FENCE LOC DIM .09	29
-	1	1	1	-	1-455888-0	SPACER, FRONT SHEAR DEP	28
-	2	2	2	-	1-22284-0	SPRING, DRAG	27
-	1	1	1	-	356835-1	LEVER, DRAG RELEASE	26
-	1	1	1	-	240792-1	DRAG, STOCK	25
-	1	1	1	-	6-690504-8	GUIDE, STRIP (REAR)	24
-	1	1	1	-	690438-1	GUIDE, STRIP (FRONT)	23
							22
-	REF	REF	REF	-	4-22284-9	SPRING, FEED RETURN	21
							20
-	1	1	1	-	1-690472-4	STRIPPER	19
							18
							17
-	1	1	1	-	691667-1	GUARD, CHIP (FRONT)	16
							15
							14
							13
-	1	1	1	-	3-22280-3	SPRING, SHEAR	12
-	1	1	1	-	690461-1	STOP, SHEAR	11
-	1	1	1	-	690459-1	HOLDER, SHEAR (FRONT)	10
-	1	1	1	-	454276-1	SHEAR, FLOAT (FRONT)	9
1	1	1	1	-	1-464962-0	ANVIL	8
							7
							6
-	1	1	1	-	455889-9	DEPRESSOR, SHEAR (FRONT)	5
-	1	1	1	-	2-238011-5	SPACER, TUBULAR	4
1	1	1	1	-	3-683453-8	CRIMPER, INSULATION	3
-	1	1	1	-	455888-1	SPACER, CRIMPER	2
1	1	1	1	-	3-456403-3	CRIMPER, WIRE	1
-77	-3	-2	-1	U/M	PART NO	DESCRIPTION	ITEM NO

- ⚠️ RECOMMENDED SPARE PARTS.
- ⚠️ GREASE LIGHTLY.
- ⚠️ LUBRICATE DAILY USING NO. 20 MACHINE OIL.
- ⚠️ GUARD MUST BE IN PLACE WHEN OPERATING APPLICATOR.

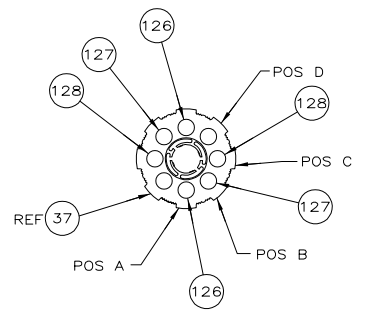
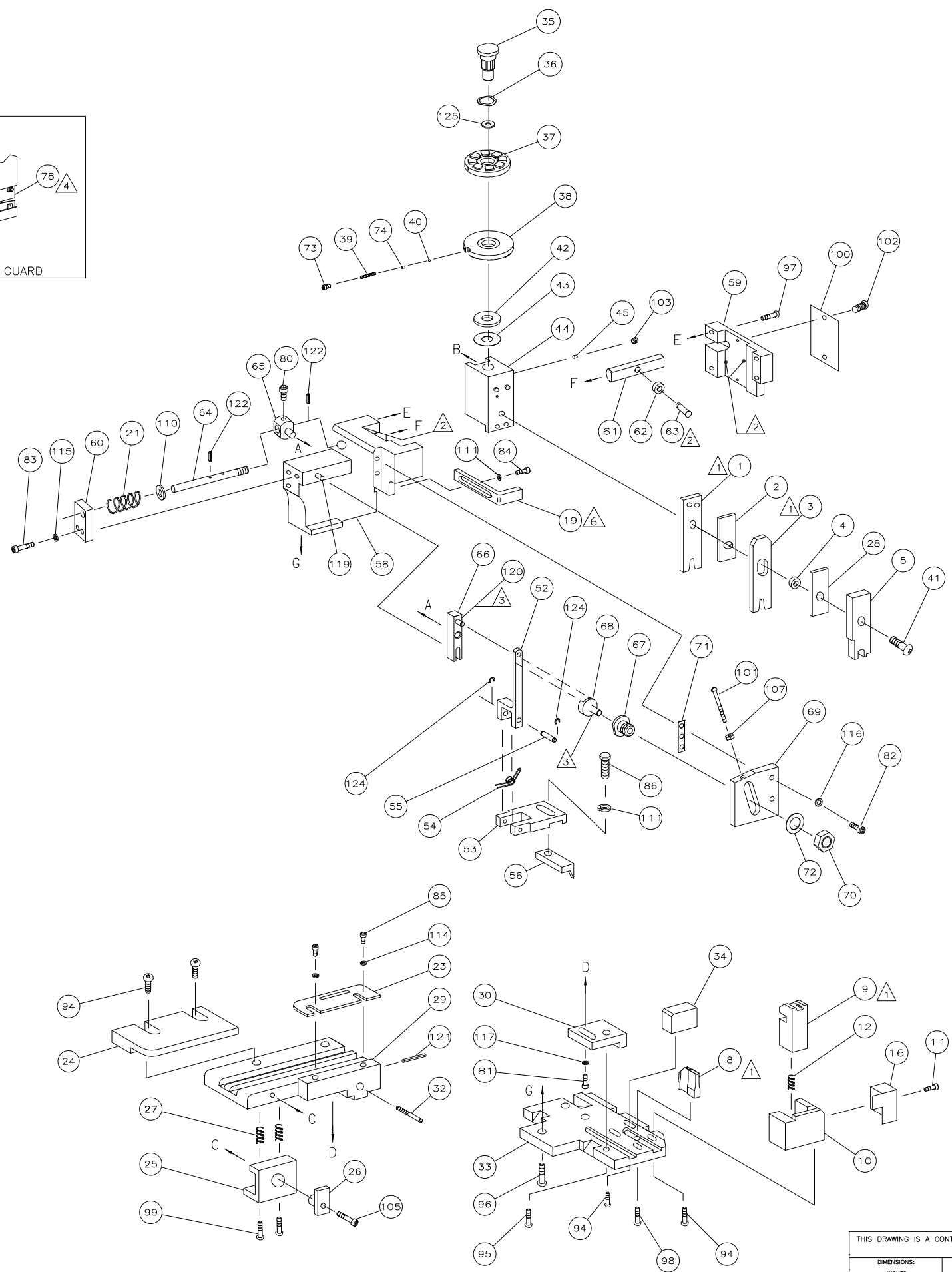
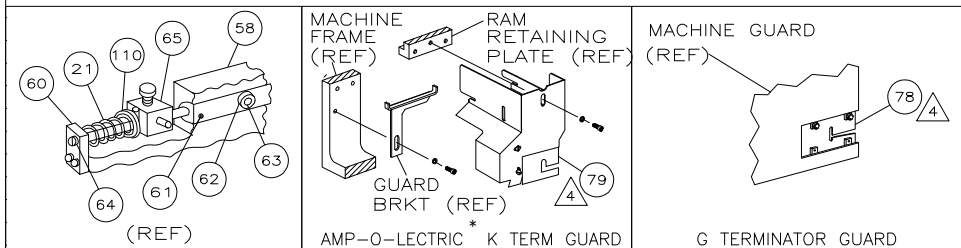
5. ITEMS WITH QTY OF REF SPECIFIED (EXCEPT ITEMS 78 & 79) ARE USED ON ITEM 46.

- ⚠️ MOUNT STRIPPER BETWEEN INSULATION CRIMPER AND SHEAR DEPRESSOR.

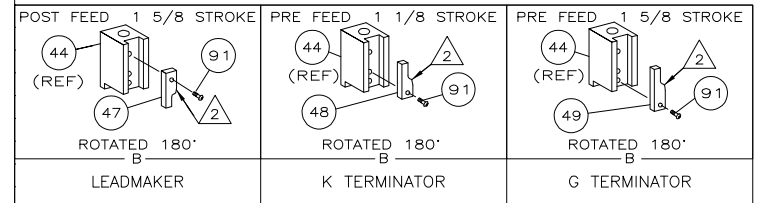
Dimensioning and tolerancing per ASME Y14.5M-2009

THIS DRAWING IS UNPUBLISHED. RELEASED FOR PUBLICATION
 © COPYRIGHT BY TYCO ELECTRONICS CORPORATION. ALL RIGHTS RESERVED.

LOC	DIST	REVISIONS			
A	66	REV	DATE	BY	APPD
		1			
		SEE SHEET 1			



* Trademark of AMP Incorporated



AMP 4805 REV 31MAR2000
 11JAN2007 10:50am

THIS DRAWING IS A CONTROLLED DOCUMENT.		OWN: M. YOUNGER	08NOV2006	Tyco Electronics Corporation Harrisburg, PA 17105-3608	
DIMENSIONS: INCHES		TOLERANCES UNLESS OTHERWISE SPECIFIED:		NAME: MINIATURE QUICK CHANGE APPLICATOR SIDE FEED (MINI AMP-IN)	
0 PLC ± .005		1 PLC ± .003		SIZE: A1	
2 PLC ± .002		3 PLC ± .001		CAGE CODE: 567336	
4 PLC ± .001		ANGLES: ± .5°		DRAWING NO: 567336	
MATERIAL: -		FINISH: -		RESTRICTED TO: -	
CUSTOMER DRAWING		SCALE: 1:1		SHEET 2 OF 2	