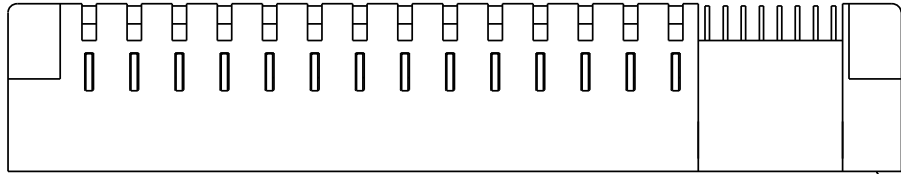


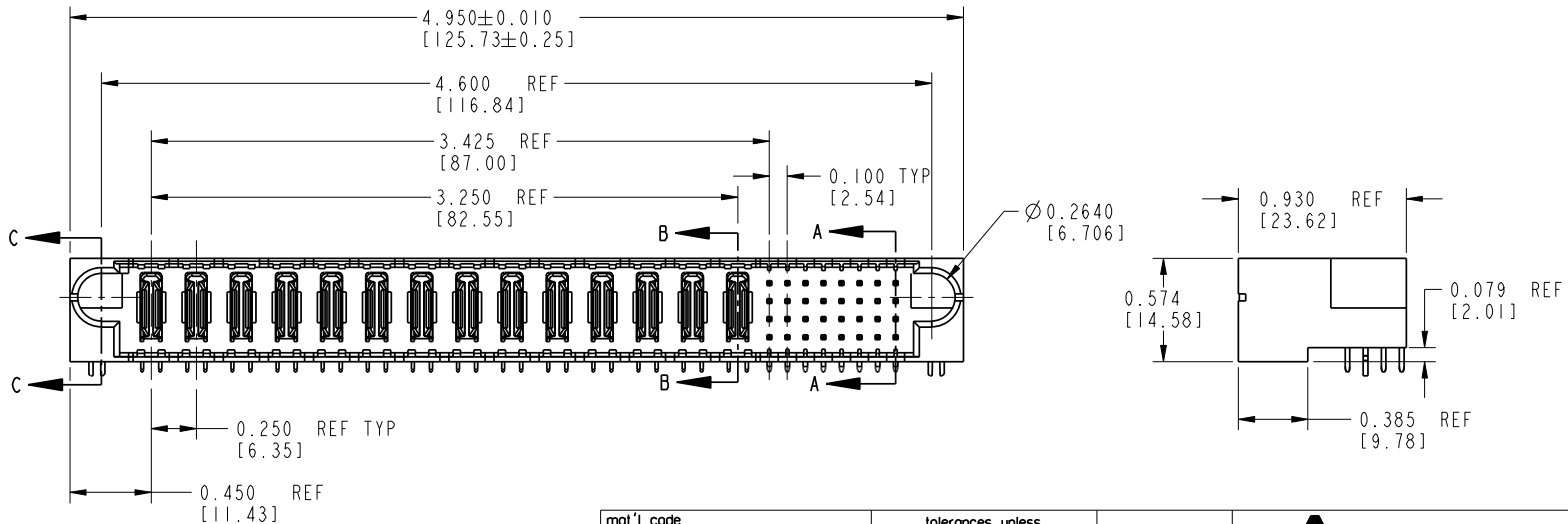
Tous droits strictement reserves. Reproduction ou communication a des tiers interdite sous quelque forme que ce soit sans autorisation ecrite du proprietaire. Propriete de c FCI. Droits de reproduction FCI.

All rights strictly reserved. Reproduction or issue to third parties in any form without written authority from the proprietor. Property of FCI. Copyright FCI.

PRODUCT NUMBER
SEE SHEET 3



SEE NOTE 7



mat'l code SEE NOTE 6				tolerances unless otherwise specified		CUSTOMER COPY	 www.fciconnect.com
lir	ecn no.	dr	date	linear	projection	title	
J	DG05-0363	GUOJM	09/28/05	.XX±.01/.X±.3	 INCH / MM scale 1:1	14P + 32S RIGHT ANGLE SOLDER HEADER	
K	DG05-0563	RYAN	12/29/05	.XXX±.005/.X±.13 XXXX±.0020/.XXX±.05		product family PWRBLADE code 213	
				angles 0° ± 2°	size		SHEET 1 OF 3
				dr C. BAROT 12-30-98	dwg no 51401		
				enrg J. BROWN 12-30-98	A		
				chr J. BROWN 12-30-98			
				appd J. BROWN 12-30-98			
sheet index	revision sheet	K 1	K 2	K 3			

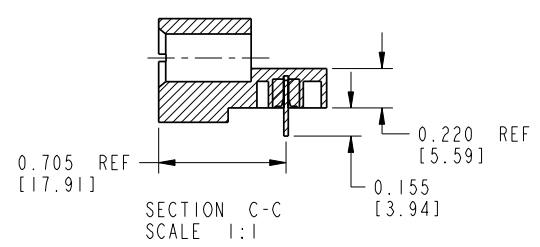
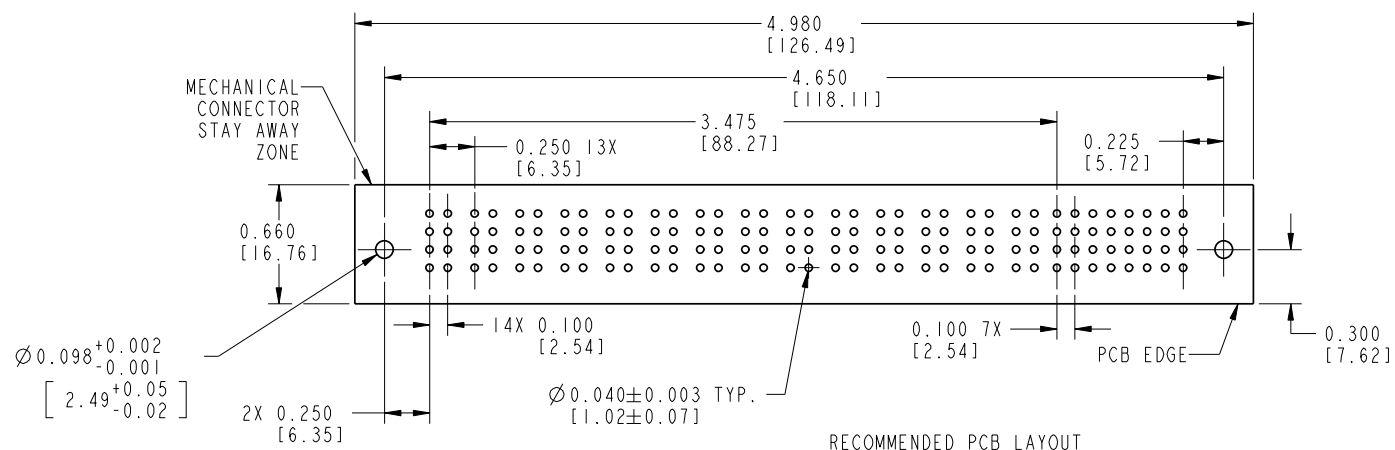
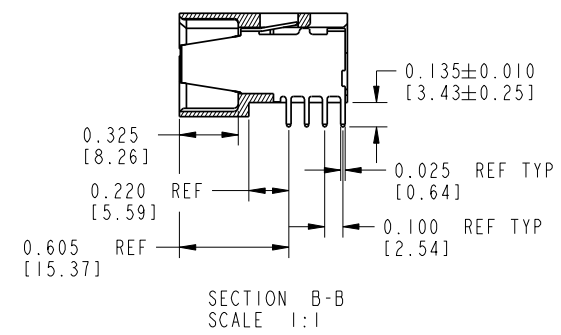
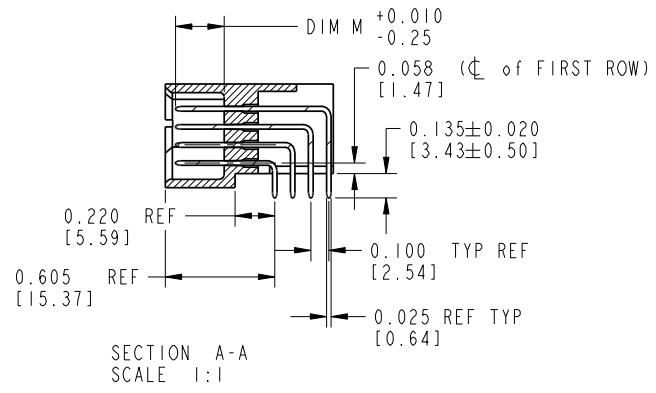
form no. 7530-001-103

cage code 22526

Tous droits strictement réservés. Reproduction ou communication o des tiers interdite sous quelque forme que ce soit sans autorisation écrite du propriétaire. Propriété de c FCI. Droits de reproduction FCI.

All rights strictly reserved. Reproduction or issue to third parties in any form without written authority from the proprietor. Property of FCI. Copyright FCI.

PRODUCT NUMBER
SEE SHEET 3



mat'l code				tolerances unless otherwise specified		CUSTOMER COPY		 www.fciconnect.com	
lfr	ecn no.	dr	date	linear	.XX±.01/.X±.3	projection		title	
K				angles	.XXX±.005/.X±.13			14P + 32S	
				dr	XXX±.0020/.XXX±.05	INCH / MM		RIGHT ANGLE SOLDER HEADER	
				enrg		scale		product family	code
				chr	C. BAROT 12-30-98	1:1		PWRBLADE	213
				appd	J. BROWN 12-30-98			size	SHEET
					J. BROWN 12-30-98			dwg no	2 OF 3
sheet index	revision sheet						A		51401

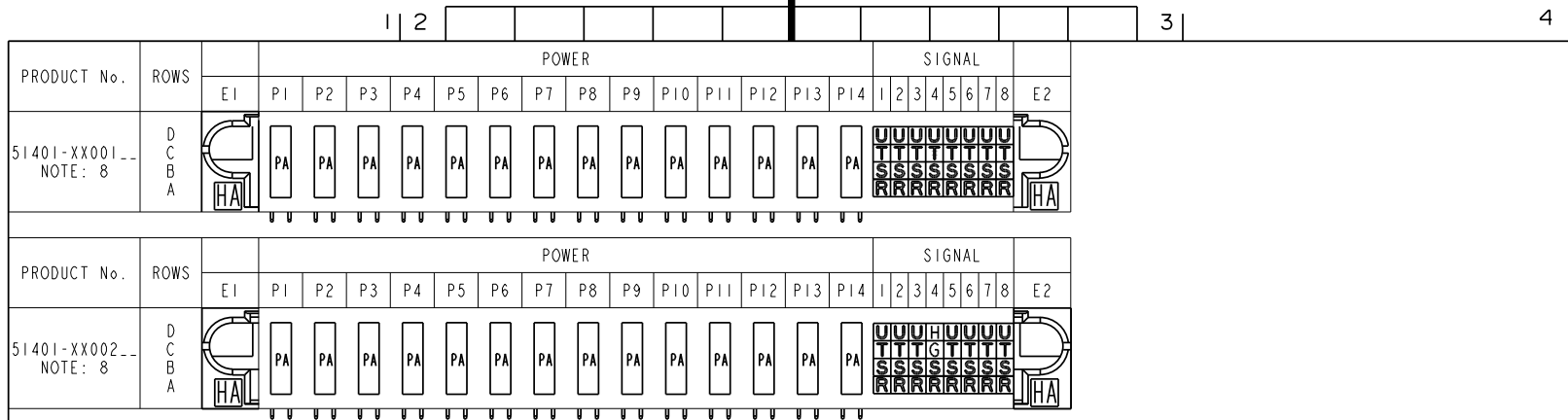
form no. 7530-001-I03

cage code 22526

Tous droits strictement reserves. Reproduction ou communication o des tiers interdite sous quelque forme que ce soit sans autorisation ecrite du propriétaire. Propriete de c FCI. Droits de reproduction FCI.



All rights strictly reserved. Reproduction or issue to third parties in any form whatever is not permitted without written authority from the proprietor. Property of FCI. Copyright FCI.



PCB - NOTES

1. ALL DIMENSIONS ARE BASIC UNLESS OTHERWISE SPECIFIED.
2. ALL THROUGH HOLES ARE LOCATED WITH A TRUE POSITION OF .004
3. ALL HOLE DIAMETERS ARE FINISHED HOLE SIZE
4. $\varnothing 0.098/2.49$ THROUGH HOLES ARE UNPLATED
5. $\varnothing 0.0453/1.151$ DRILLED HOLES PLATED WITH .0003/.007 MIN SnPb OVER .001/1.03 to .003/.08 PLATING TO ACHIEVE A $.080 \pm .003/1.02 \pm .08$ HOLE

CONNECTORS - NOTES

6. HOUSING MATERIAL: UL94V-0 GLASS-FILLED HIGH TEMP THERMOPLASTIC
SIGNAL PIN MATERIAL: COPPER ALLOY
POWER CONTACT MATERIAL: COPPER ALLOY
7. "MANUFACTURER" NAME, P/N, AND DATE CODE TO APPEAR ON THIS SURFACE
8. PLATING:

51401-XXYYY: SIGNAL PIN: 30u"/0.76um Au OVER 50u"/1.27um Ni ON THE CONTACT AREA AND 100u"/2.54um SnPb OVER 50u"/1.27um Ni ON THE TERMINATION AREA
POWER PIN: 30u"/0.76um Au OVER 50u"/1.27um Ni ON THE CONTACT AREA AND 100u"/2.54um SnPb OVER 50u"/1.27um Ni ON THE TERMINATION AREA

51401-XXYYLFF: SIGNAL PIN: 30u"/0.76um Au OVER 50u"/1.27um Ni ON THE CONTACT AREA AND 78u"/2.00um Sn OVER 50u"/1.27um Ni ON THE TERMINATION AREA
POWER PIN: 30u"/0.76um Au OVER 50u"/1.27um Ni ON THE CONTACT AREA AND 78u"/2.00um Sn OVER 50u"/1.27um Ni ON THE TERMINATION AREA

PART NUMBER 51401-XXYYLFF MEETS EUROPEAN UNION DIRECTIVE AND OTHER COUNTRY REGULATIONS AS DESCRIBED IN GS-22-008.

THE HOUSING WILL WITHSTAND EXPOSURE TO 260° PEAK TEMPERATURE FOR 10 SECONDS IN A WAVE SOLDER APPLICATION WITH A CIRCUIT BOARD.

CODE	DIM "M" MATING LENGTH	CONTACT TYPE
G	0.220 [5.59]	SIGNAL
H	0.220 [5.59]	SIGNAL
R	0.270 [6.86]	SIGNAL
S	0.270 [6.86]	SIGNAL
T	0.270 [6.86]	SIGNAL
U	0.270 [6.86]	SIGNAL
PA	N/A [N/A]	POWER
HA	N/A [N/A]	HOLD-DOWN

mat'l code				tolerances unless otherwise specified		CUSTOMER COPY		 www.fciconnect.com	
lfr	ecn no.	dr	date	linear	.XX±.01/.X±.3	projection	title	14P + 32S	
K					.XXX±.005/.X±.13	 INCH / MM	RIGHT ANGLE SOLDER HEADER		
				angles	XXX±.0020/.XXX±.05		product family	PWRBLADE	code
				dr	C. BAROT 12-30-98	scale	size	dwg no	51401
				enrg	J. BROWN 12-30-98	1:1	A	SHEET 3 OF 3	
				chr	J. BROWN 12-30-98				
				appd	J. BROWN 12-30-98				
sheet index	revision	sheet							

form no. 7530-001-I03

code 22526