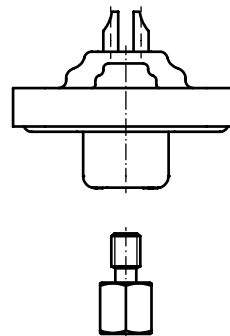
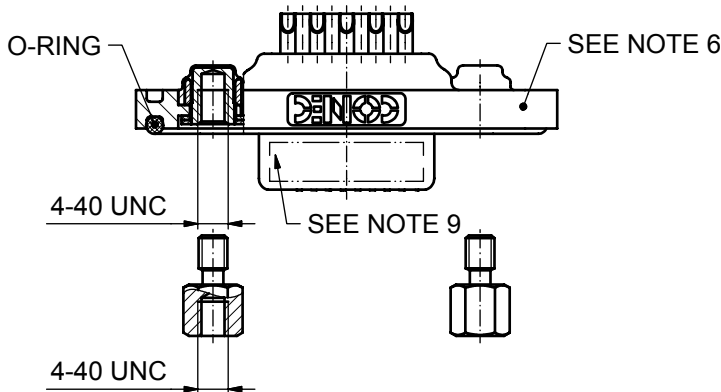


AT ALL TIMES WATER RESISTANT CONNECTORS NOT IN USE SHOULD BE COVERED WITH A CONEC WATER RESISTANT CAP OR WATER TIGHT HOOD.



NOTES:

1. METAL SHELLS: STAINLESS STEEL
2. INSULATORS: PBT GF UL 94 V-0, BLACK
3. CONTACTS: COPPER ALLOY
PLATING: 30µm HARD GOLD over min. 50µm NICKEL
SOLDER CUP ACCEPTS CABLE AWG 20
4. THREADED INSERT: COPPER ALLOY; min. 200µm TIN over 80µm NICKEL
5. COLLAR: COPPER ALLOY; min. 200µm TIN over 80µm NICKEL
6. FRAME: ZINC DIE CAST; NICKEL PLATED
7. HEXLOCKING SCREW: STAINLESS STEEL
8. RECOMMENDED TORQUE FOR MOUNTING SCREW 35Ncm (3.1 in.LB) / max.40Ncm (3.5 in.LB)
9. CONNECTOR IS PART MARKED: 8STD09SCM99B30X CONEC ABC

Directive 2002/95/EC
"RoHS"
Compliant

APPROVAL # FREIGABE # DEBLOCAGE # AUTORIZACION # APPROVAL	
CUSTOMER APPROVAL DATE:	
NAME:	TITLE:
COMPANY NAME:	
APPROVAL # FREIGABE # DEBLOCAGE # AUTORIZACION # APPROVAL	

THIS DRAWING MAY NOT BE COPIED OR REPRODUCED IN ANY WAY, AND MAY NOT BE PASSED ON TO A THIRD PARTY WITHOUT WRITTEN PERMISSION. OWNERSHIP AND COPYRIGHT OF CONEC GmbH				tolerance		dim. in mm	scale: 2:1 (5:1)	
				date			material: SEE NOTES	
DO NOT ALTER CAD DRAWING BY HAND				drawn	27.06.08	Lehmenkühler	title: D-SUB FEMALE 9pos. SOLDER CUP with threaded insert and hexlocking screw	
				appd.	27.06.08	Mickenbecker		
				norm				
				d-old				
a	Origin			CONEC		dwg no: Inventor 10		DIN-A3
rev.	description	date	name			15K1A240		sh: 1
							part no: 8STD09SCM99B30X	