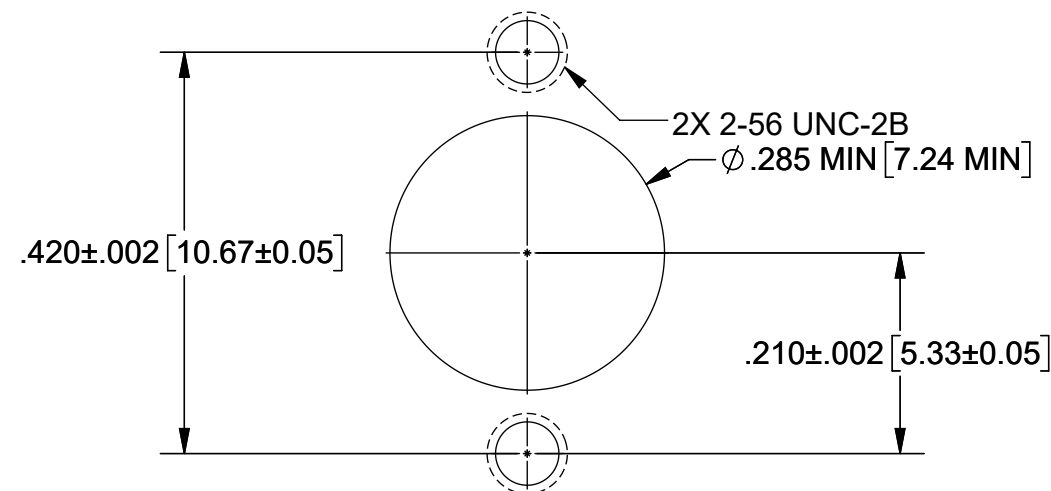
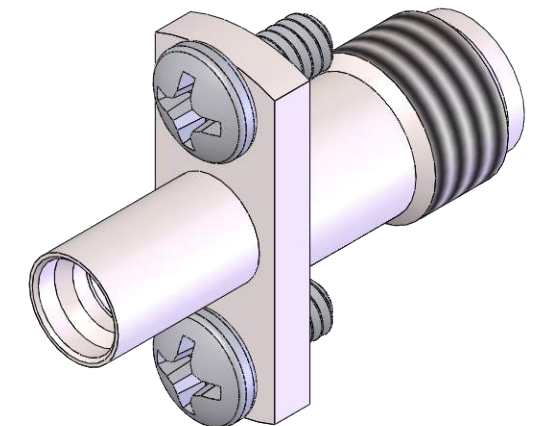
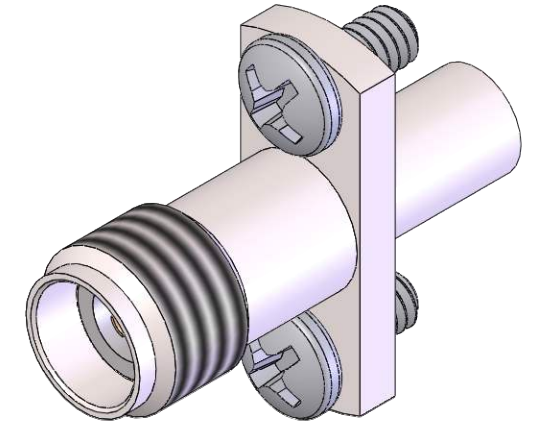
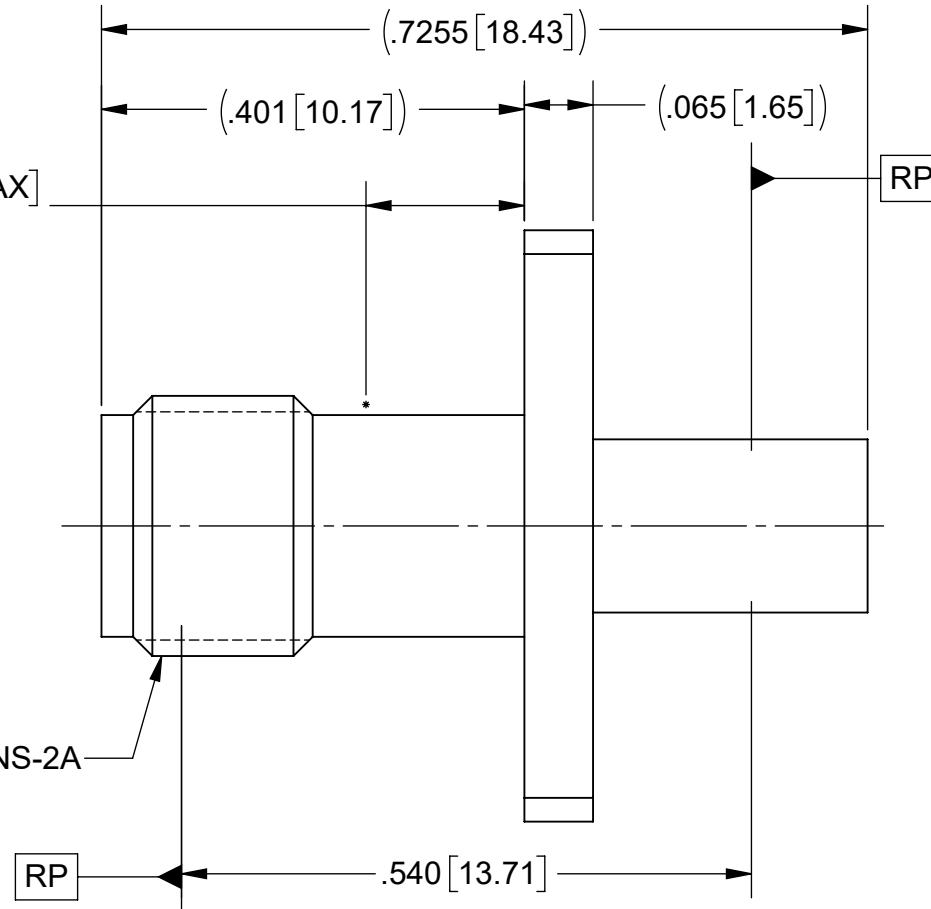
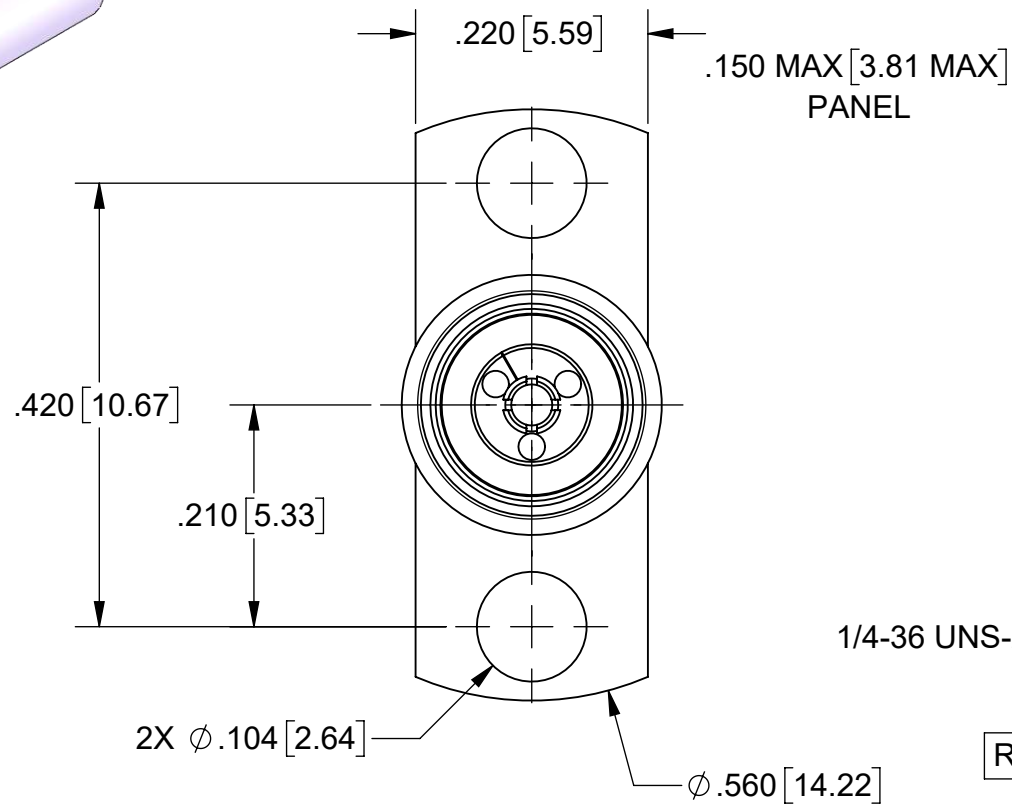
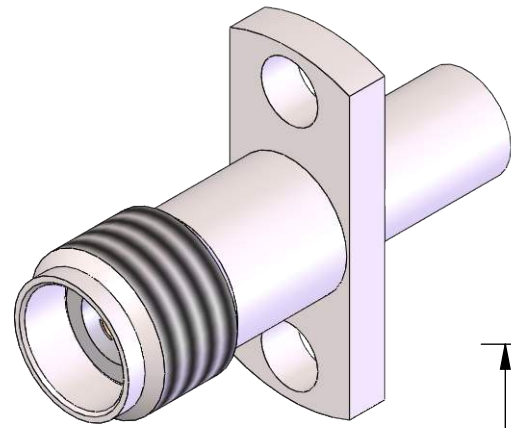


PRODUCT DATA DRAWING

| REVISION HISTORY | | | |
|------------------|-------------|-------|----------|
| REV | DESCRIPTION | DATE | APPROVED |
| - | NRN 45639 | 03/21 | SEE PDM |
| | | | |



MATERIAL:

BODY & SLEEVE:

STAINLESS STEEL PER AMS-5640,
ALLOY UNS S30300, TYPE 1
OR ASTM A582, TYPE 303, COND. A

CONTACT:

BERYLLIUM COPPER PER ASTM B196,
ALLOY No. UNS C17300, TD04

INSULATOR:

PTFE PER ASTM D1710, TYPE I,
GRADE 1, CLASS B

BEAD:

ULTEM 1000 PER ASTM D5205

SCREWS:

18-8 STAINLESS STEEL

FINISH:

BODY & SLEEVE:

PASSIVATED PER AMS-2700

CONTACT:

GOLD PER ASTM B488, TYPE II, CODE
C, CLASS 1.27, OVER NICKEL PER
AMS-QQ-N-290, CLASS 1, .00005" MIN.

SCREWS:

PASSIVATED

PERFORMANCE:

IMPEDANCE:


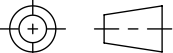
50 OHMS

FREQ. RANGE:

DC TO 40.0 GHz

RECOMMENDED MOUNTING HOLE

| SV P/N | INTERFACE |
|-----------|-----------|
| 1115-6124 | FD |
| 1115-6125 | SB |

| | | | |
|---|--|--|---|
| MATERIAL: SEE NOTES | DIMENSIONS ARE IN INCHES TOLERANCES: FRACTIONAL: $\pm 1/64$ ANGULAR: X° $\pm 1^{\circ}0'$ X'X' $\pm 15'$ | UNLESS OTHERWISE SPECIFIED 1) ALL DIMENSIONS ARE IN INCHES (MILLIMETERS) 2) ALL DIMENSIONS ARE AFTER PLATING. 3) BREAK CORNERS & EDGES .005 R. MAX. 4) CHAM. 1ST & LAST THREADS. 5) SURFACE ROUGHNESS 63-MIL-STD-10. 6) DIA: 'S ON COMMON CENTERS TO BE CONCENTRIC WITHIN .005 T.I.R. 7) REMOVE ALL BURRS |  www.svmicrowave.com TITLE: SMP MALE TO 2.92mm FEMALE STRAIGHT 2 HOLE FLANGE ADAPTER |
| FINISH: SEE NOTES | DECIMAL: X $\pm .030$.XX $\pm .010$.XXX $\pm .005$ | | |
| SURFACE AREA: N/A | INTERPRET DIMENSIONS AND TOLERANCES PER ASME Y14.5M - 1994 | DRAWN: JLP 03/02/21 | SIZE DWG. NO. B |
| PROPRIETARY THE INFORMATION CONTAINED IN THIS DRAWING IS THE SOLE PROPERTY OF SV MICROWAVE, INC. ANY REPRODUCTION IN PART OR AS A WHOLE WITHOUT THE WRITTEN PERMISSION OF SV MICROWAVE, INC IS PROHIBITED. | THIRD ANGLE PROJECTION | CHECKED: SEE PDM | 1115-6124-6125 |
| |  | APPROVED: SEE PDM | SCALE: 5.5:1 |