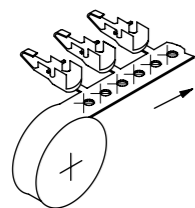


NOTE: INTER LEAF PAPER
BETWEEN LAYERS

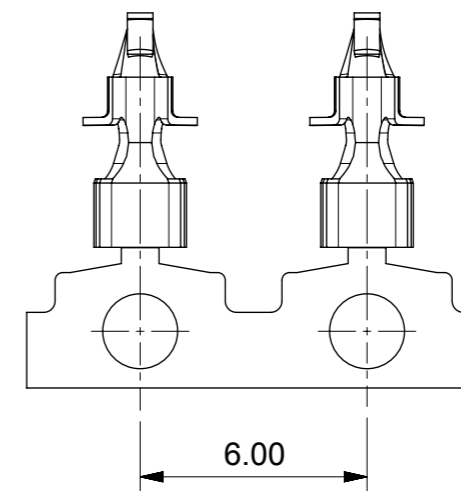
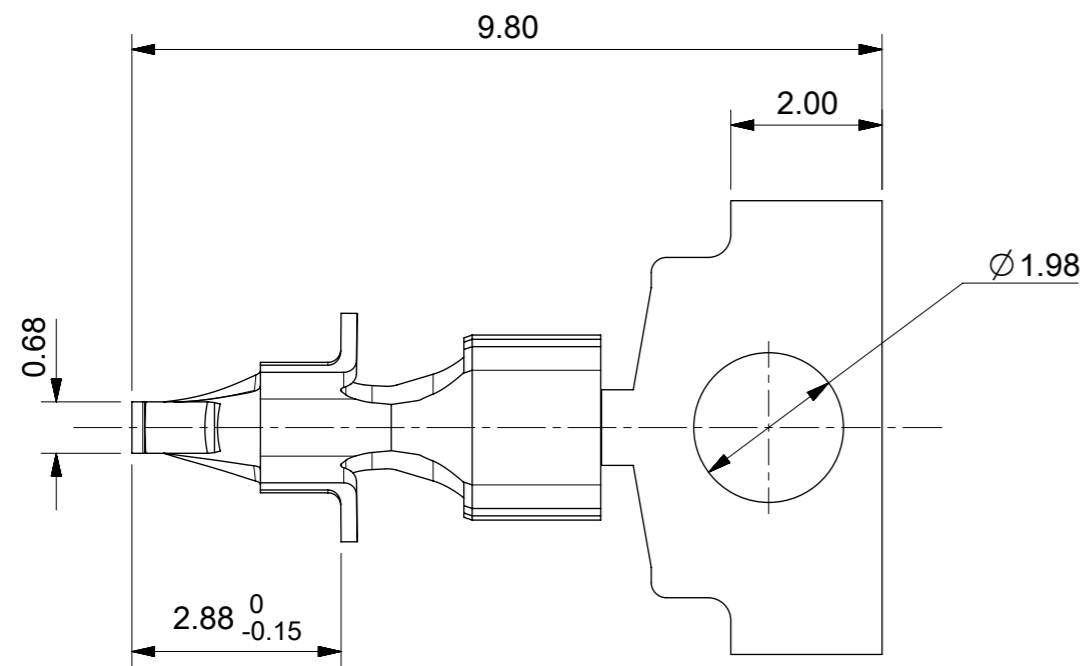


UNREELING DIRECTION
TO CUSTOMER

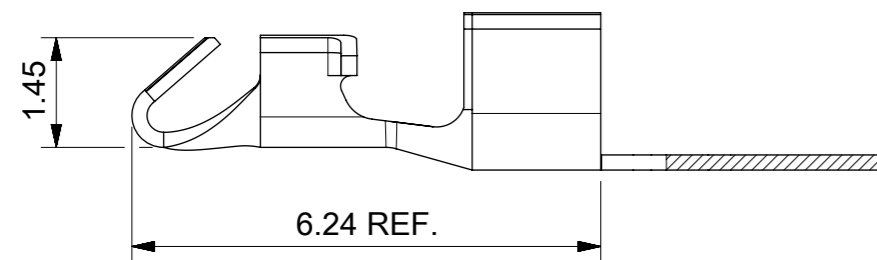
NOTES:

1. MATERIAL: 0.20 PHOS.BR. PER E.S. 99001-0545.
2. PLATING: HOT TIN DIP 1.0 μ m - 2.5 μ m
3. TERMINAL WILL ACCOMODATE
22 AWG SOLID OR FUSED WIRE
24 AND 26 AWG SOLID, STRANDED OR FUSED WIRE
WIRE 1.52 MAX. INSULATION DIA.
4. P.C.B. MOUNTING HOLE:
22 AWG DIA 1.23/1.30
24 AND 26 AWG DIA 1.17/1.25
5. MAX. PCB THICKNESS 1.57 \pm 0.20

THIS DRAWING CONTAINS INFORMATION THAT IS PROPRIETARY TO MOLEX ELECTRONIC TECHNOLOGIES, LLC AND SHOULD NOT BE USED WITHOUT WRITTEN PERMISSION											
SYMBOLS	DIMENSION UNITS	SCALE	CURRENT REV DESC: CAD MIGRATIONREMASTER MODELS AND DRAWINGS			molex					
$\nabla = 0$	mm	10:1	EC NO: 635385 DRWN: CRAODOREMS 2019/12/19 CHK'D: CRAODOREMS 2020/04/07 APPR: JKLECHA 2020/04/20			PCM CRIM TERM BRD-IN STAND ALONE 1TNL					
$\nabla = 0$	GENERAL TOLERANCES (UNLESS SPECIFIED)					PRODUCT CUSTOMER DRAWING					
$\nabla = 0$	ANGULAR TOL $\pm 0.5^\circ$					INITIAL REVISION:		DOCUMENT NUMBER	DOC TYPE	DOC PART	REVISION
$\nabla = 0$	4 PLACES	\pm				DRWN: MC	1988/10/03	SD-90198	PSD	001	N1
$\nabla = 0$	3 PLACES	\pm				APPR: MWILHITE	1996/07/22				
$\nabla = 0$	2 PLACES	± 0.2									
$\nabla = 0$	1 PLACE	± 0.38									
$\nabla = 0$	0 PLACES	\pm									
$\square = 0$	DRAFT WHERE APPLICABLE MUST REMAIN WITHIN DIMENSIONS		THIRD ANGLE PROJECTION	DRAWING	SERIES	MATERIAL NUMBER	CUSTOMER	SHEET NUMBER			
$\nabla = 0$				A3-SIZE	90198	901980001	GENERAL MARKET	1 OF 2			



SCALE 5:1



NOTES:

1. MATERIAL: 0.20 PHOSPHOR BRONZE
2. PLATING: HOT TIN DIP
3. TERMINAL WILL ACCOMODATE
22 AWG SOLID OR FUSED WIRE
24 AND 26 AWG SOLID, STRANDED OR FUSED WIRE
WIRE 1.52 MAX. INSULATION DIA.
4. P.C.B. MOUNTING HOLE:
22 AWG DIA 1.23/1.30
24 AND 26 AWG DIA 1.17/1.25
5. MAX. PCB THICKNESS 1.19±0.20

SYMBOLS	THIS DRAWING CONTAINS INFORMATION THAT IS PROPRIETARY TO MOLEX ELECTRONIC TECHNOLOGIES, LLC AND SHOULD NOT BE USED WITHOUT WRITTEN PERMISSION				
	DIMENSION UNITS	SCALE	CURRENT REV DESC: CAD MIGRATIONREMASTER MODELS AND DRAWINGS		
▽ = 0	mm	10:1	EC NO: 635385 DRWN: CRAODOREMS 2019/12/19 CHK'D: CRAODOREMS 2020/04/07 APPR: JKLECHA 2020/04/20		
▽ = 0	GENERAL TOLERANCES (UNLESS SPECIFIED)				
▽ = 0	ANGULAR TOL ± 0.5°		INITIAL REVISION: DRWN: CTOBIN 1998/07/06 APPR: MWILHITE 1998/07/06		
▽ = 0	4 PLACES	±			
▽ = 0	3 PLACES	±	DOCUMENT NUMBER SD-90198		
▽ = 0	2 PLACES	± 0.2			
▽ = 0	1 PLACE	± 0.38	DOC TYPE PSD		
▽ = 0	0 PLACES	±			
□ = 0	DRAFT WHERE APPLICABLE MUST REMAIN WITHIN DIMENSIONS	THIRD ANGLE PROJECTION	SERIES A3-SIZE		
▽ = 0					
DRAWING		SHEET NUMBER	MATERIAL NUMBER	CUSTOMER	REVISION
A3-SIZE		90198	901980002	GENERAL MARKET	001 N1
SHEET NUMBER		2 OF 2			