

Type BLM-310

Fuse Block

10 Pole – Miniature Auto Blade

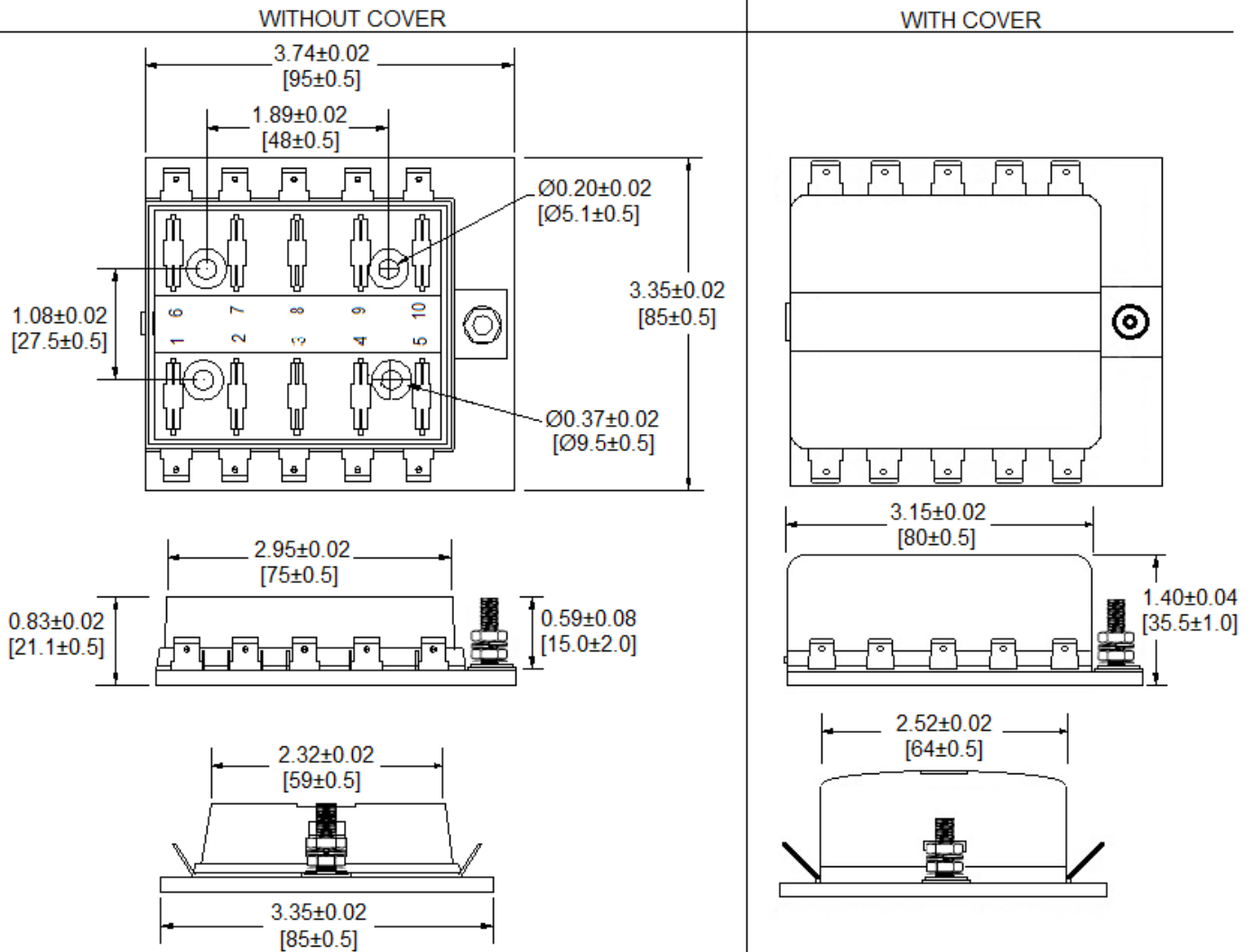


www.optifuse.com (619) 593-5050

Specifications:

- Max Current Rating:** 30A per Circuit - 100A Max Input
- Fuse Type:** Miniature Auto Blade – APM, ANM Series
- Base:** PBT (UL-Flame 94V-0)
- Cover:** PC (UL-Flame 94V-2)
- Terminals:** Tin Plated Brass - 0.250” Quick Connect Terminals
- Temperature Rating:** -20° C ~ +85° C

Mechanical Dimensions: Inches [mm]



	<p>Warning: -Operation beyond the specified maximum ratings or improper use may result in damage and possible electrical arcing and/or flame.</p>
	<p>-Avoid contact of device with chemical solvent. Prolonged contact may damage the device performance.</p>

Note: All specifications subject to change without notice.