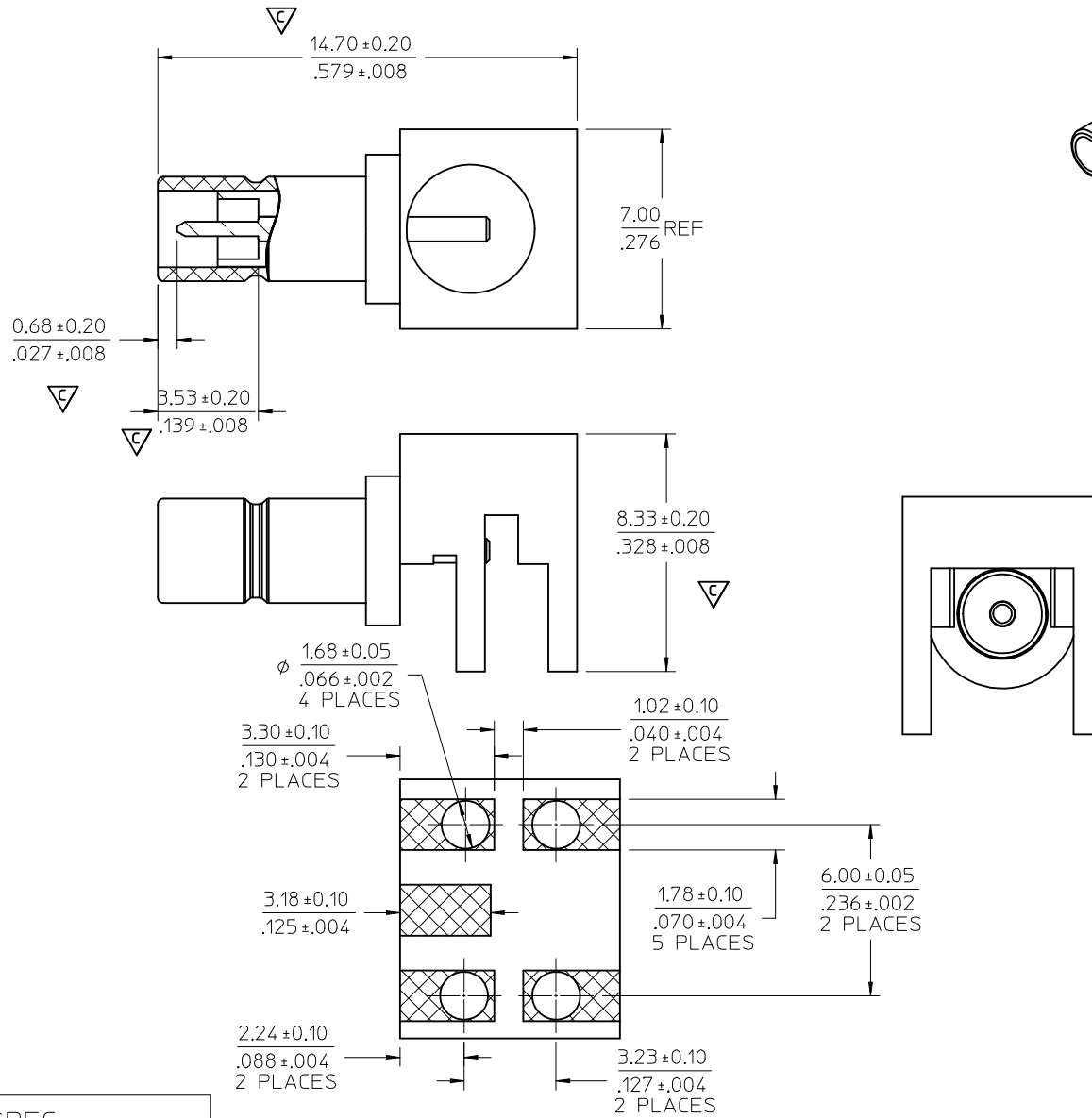
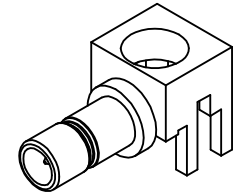


MATERIALS AND FINISHES

- BODY ZINC ALLOY  
PLATED TIN
- CENTER CONTACT BRASS  
PLATED GOLD
- INSULATOR TEFLON
- PACKAGING BY TRAY



PART # 73396-0420

RECOMMENDED PCB LAYOUT

PS-73598-0099	PRODUCT SPEC
SPECIFICATION	DESCRIPTION

CHG: REDREW TO SHOW REVISED COMPONENTS	EC NO: URF2007-0502 DRWN: FLAHERTY 2007/06/11 CHKD: SHAH 2007/06/11 APPR: WIENER 2007/06/11	DESCRIPTION	QUALITY SYMBOLS =0 =0	GENERAL TOLERANCES (UNLESS SPECIFIED)		DIMENSION STYLE MM/IN		SCALE	DESIGN UNITS METRIC	THIRD ANGLE PROJECTION
				4 PLACES ± --- ± ---	3 PLACES ± --- ± ---	2 PLACES ± 0.13 ± ---	1 PLACE ± 0.25 ± ---	ANGULAR ± 2 °	DRAWN BY EVITA	DATE 2005/09/02
B3	REV	DRAFT WHERE APPLICABLE MUST REMAIN WITHIN DIMENSIONS	MATERIAL NO. 733960420	SIZE C	APPROVED BY MI SEN	DATE 2005/09/02	MATERIAL NO. 733960420	DOCUMENT NO. SD-73396-042	SHEET NO. 1 OF 1	MOLEX INCORPORATED