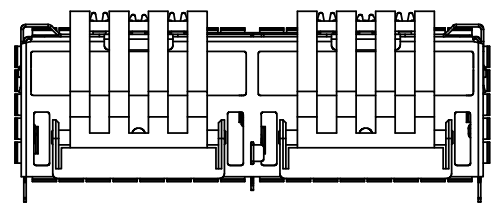
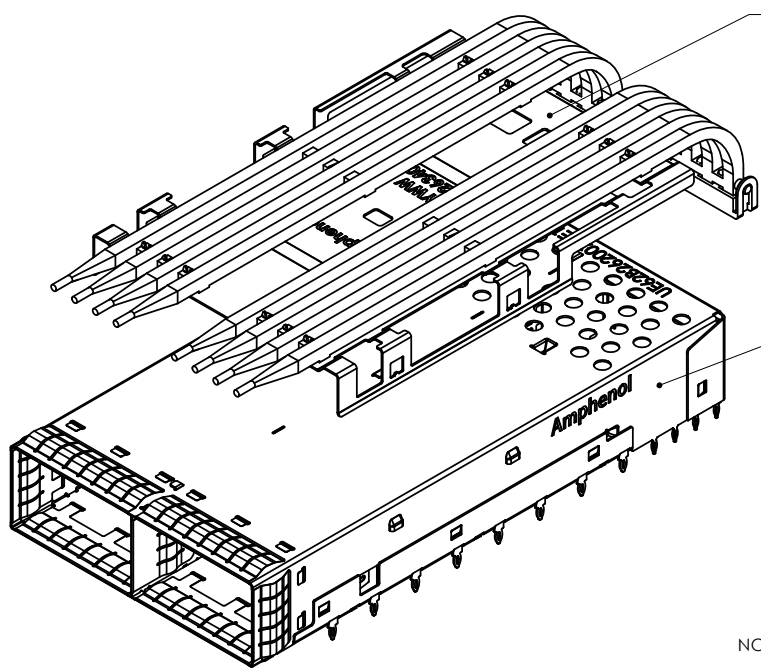
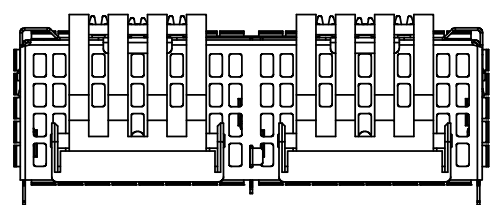


REVISIONS				
REV.	ECN	DESCRIPTION	DATE	APPROVED
A		PROPOSAL	02-MAR-20	J.SI



UE62-C2624-020E1



UE62-C2624-021E1

- NOTES:
- MATERIAL:  
 CAGE: COPPER ALLOY.  
 PLATING: 2.54 µm MIN. NICKEL.  
 LIGHT PIPE: CLEAR POLYCARBONATE  
 LIGHT PIPE COVER: HIGH TEMP PLASTIC UL94-V0  
 LIGHT PIPE BRACKET: CLIP: STAINLESS STEEL
  - PACKAGING: TRAY PACKAGING.
  - COMPLIES WITH OSFP MSA
  - AMPHENOL PART NUMBER:  
 SEE PART NUMBER CONFIGURATION



AMPHENOL PART NUMBER CONFIGURATION

UE62-C2624-02XE1

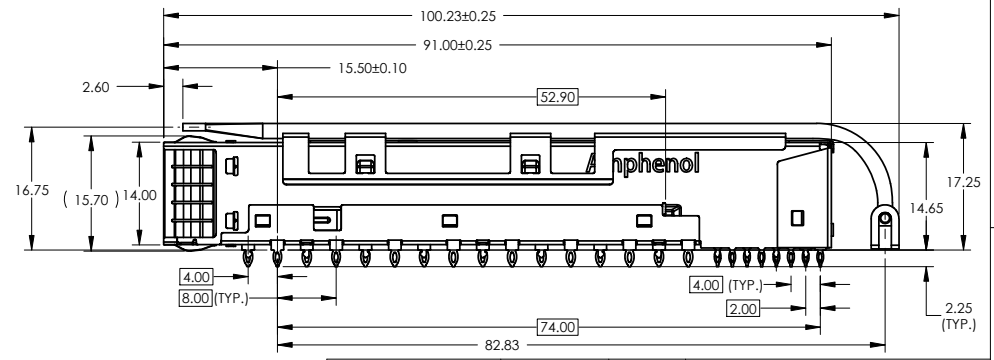
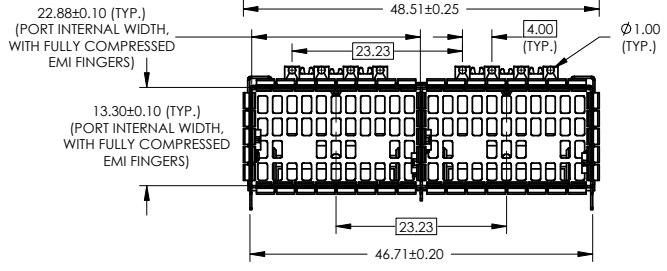
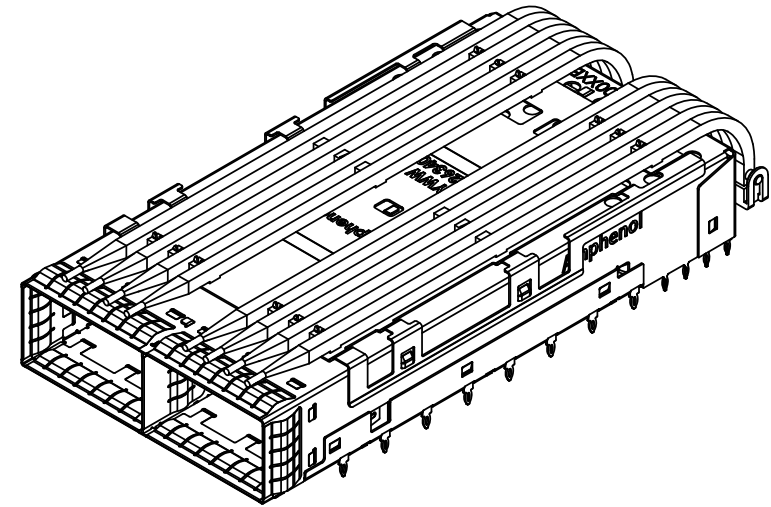
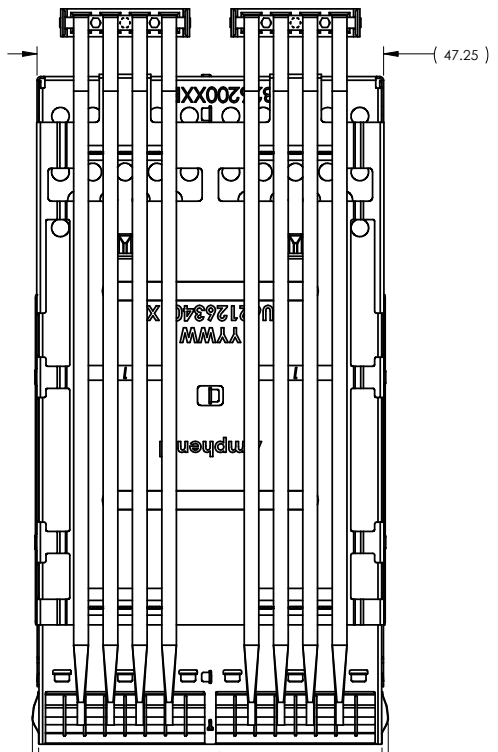
- PACKAGING  
 1 = TRAY PACKAGING
- CAGE BACK VENT HOLE CONFIGURATION  
 0 = LARGE HOLE  
 1 = STANDARD

DO NOT SCALE DRAWING

THIS DOCUMENT CONTAINS PROPRIETARY INFORMATION AND SUCH INFORMATION MAY NOT BE DISCLOSED TO OTHERS FOR ANY PURPOSE OR USED FOR MANUFACTURING PURPOSES WITHOUT PERMISSION FROM AMPHENOL CANADA CORP.

UNLESS OTHERWISE SPECIFIED DIMENSIONS ARE IN MILLIMETERS TOLERANCES ARE: DECIMALS: XX ± 0.25 XXX ± 0.15 ANGLES: ± 0.5°	APPROVALS	DATE	Amphenol High Speed Interconnects <small>A Division of Amphenol Corp. www.amphenol-hispeed.com</small>	
	DRAWN: Galen.L	02-MAR-20	TITLE	1X2 OSFP CAGE ASSEMBLY WITH LIGHT PIPE FORWARD STOP IMPROVEMENT
MATERIAL AND FINISH SEE NOTE 1	CHECKED: Chigow.X	02-MAR-20	GA APPD	
REF.	E APPD		SIZE: A3	DWG. NO.: P-UE62-C2624-02XE1
CODE IDENT. NO.: 03554	DWG APPD: J.SI	02-MAR-20	SCALE: 1:1	PROJECT: UE62 SHEET: 1 OF 6

REVISIONS				
REV.	ECN	DESCRIPTION	DATE	APPROVED
A		PROPOSAL	02-MAR-20	J.SI

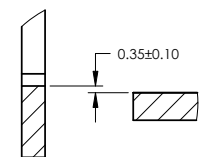
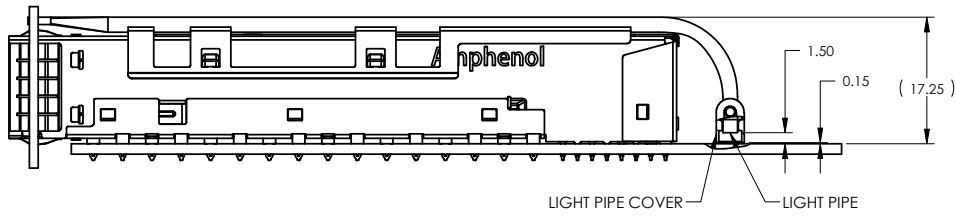


DO NOT SCALE DRAWING

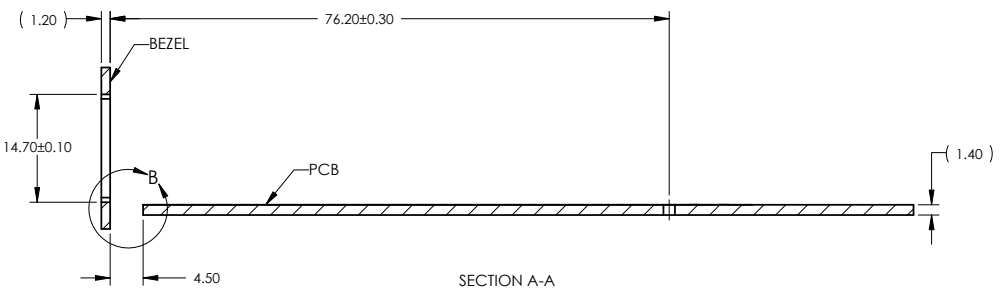
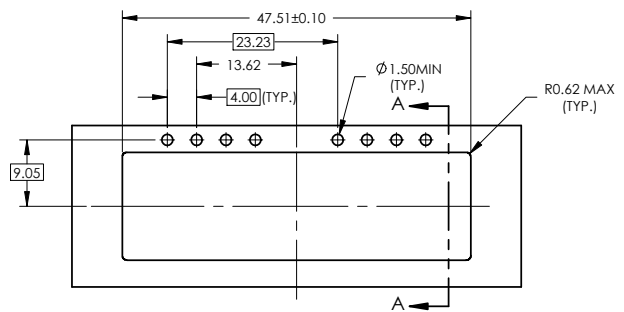
THIS DOCUMENT CONTAINS PROPRIETARY INFORMATION AND SUCH INFORMATION MAY NOT BE DISCLOSED TO OTHERS FOR ANY PURPOSE OR USED FOR MANUFACTURING PURPOSES WITHOUT PERMISSION FROM AMPHENOL CANADA CORP.

UNLESS OTHERWISE SPECIFIED DIMENSIONS ARE IN MILLIMETERS TOLERANCES ARE:		APPROVALS		DATE		Amphenol High Speed Interconnects A Division of Amphenol Corp. www.amphenol-highspeed.com	
DECIMALS	ANGLES	DRAWN	Galen.L	DESIGNED	02-MAR-20	TITLE	
X.X ± 0.25	± 0.5°	CHECKED	Chigow.X	QA APPD	02-MAR-20	1X2 OSFP CAGE ASSEMBLY WITH LIGHT PIPE FORWARD STOP IMPROVEMENT	
MATERIAL AND FINISH		SEE NOTE 1		SIZE		REV.	
				A3		P-UE62-C2624-02XE1 A	
REF.	E APPD	DWG APPD	J.SI	SCALE	1:1	PROJECT	UE62 SHEET 2 OF 6
CODE IDENT. NO.	03554	02-MAR-20		1		1	

REVISIONS				
REV.	ECN	DESCRIPTION	DATE	APPROVED
A		PROPOSAL	02-MAR-20	J.SI

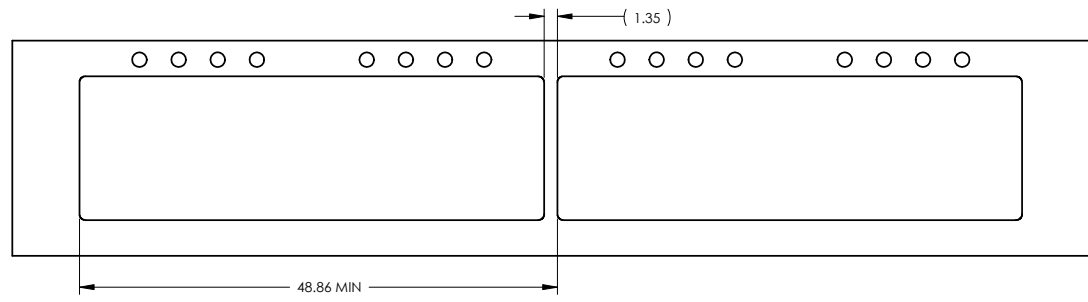


DETAIL B  
SCALE 4 : 1



SECTION A-A  
SCALE 1.5 : 1

RECOMMENDED BEZE DESIGN  
FOR SINGLE SAID MOUNTING

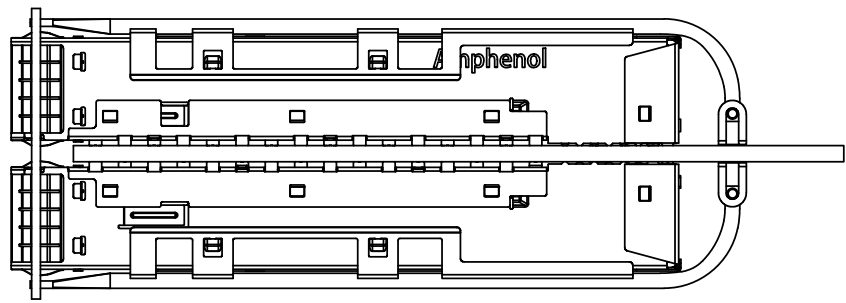


DO NOT SCALE DRAWING

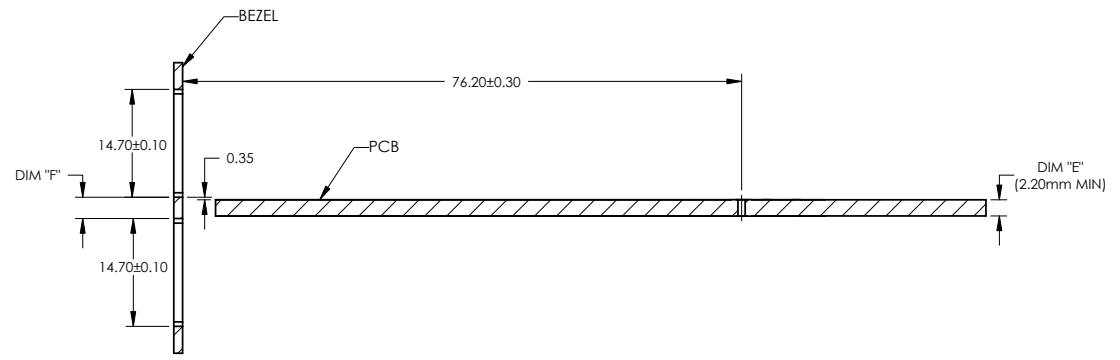
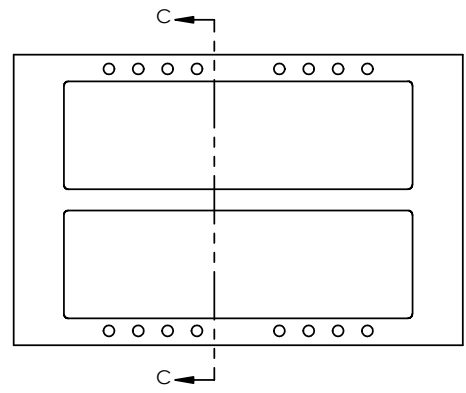
THIS DOCUMENT CONTAINS PROPRIETARY INFORMATION AND SUCH INFORMATION MAY NOT BE DISCLOSED TO OTHERS FOR ANY PURPOSE OR USED FOR MANUFACTURING PURPOSES WITHOUT PERMISSION FROM AMPHENOL CANADA CORP.

UNLESS OTHERWISE SPECIFIED DIMENSIONS ARE IN MILLIMETERS TOLERANCES ARE: DECIMALS      ANGLES X.X ± 0.25      ± 0.5° X.XX ± 0.15	APPROVALS	DATE	Amphenol High Speed Interconnects	
	DRAWN Galen.L	02-MAR-20	A Division of Amphenol Corp. www.amphenol-highspeed.com	
	DESIGNED		TITLE	
	CHECKED Chigow.X	02-MAR-20	1X2 OSFP CAGE ASSEMBLY WITH LIGHT PIPE FORWARD STOP IMPROVEMENT	
MATERIAL AND FINISH	SEE NOTE 1	QA APPD		
REF.		E APPD	SIZE A3	DWG. NO. P-UE62-C2624-02XE1
CODE IDENT. NO. 03554	DWG APPD J.SI	02-MAR-20	SCALE 1:1	PROJECT UE62 SHEET 3 OF 6

REVISIONS				
REV.	ECN	DESCRIPTION	DATE	APPROVED
A		PROPOSAL	02-MAR-20	J.SI



NOTE:  
 PANEL CUTOUT SIZES PER OSFP MSA SPEC. FOR BELLY TO BELLY MOUNTING, DIM "E" (PCB THICKNESS) IS 2.20 mm MIN. DIM "F" RELATED TO DIM "E". FOR DIM "F" = DIM "E" + 0.70 mm. THE PANEL CUTOUT 14.70 mm MIGHT BE INCREASED UP TO 15.10 mm IN ORDER TO ACCOMODATE PCB TOLERANCE.



SECTION C-C  
 SCALE 1.5 : 1

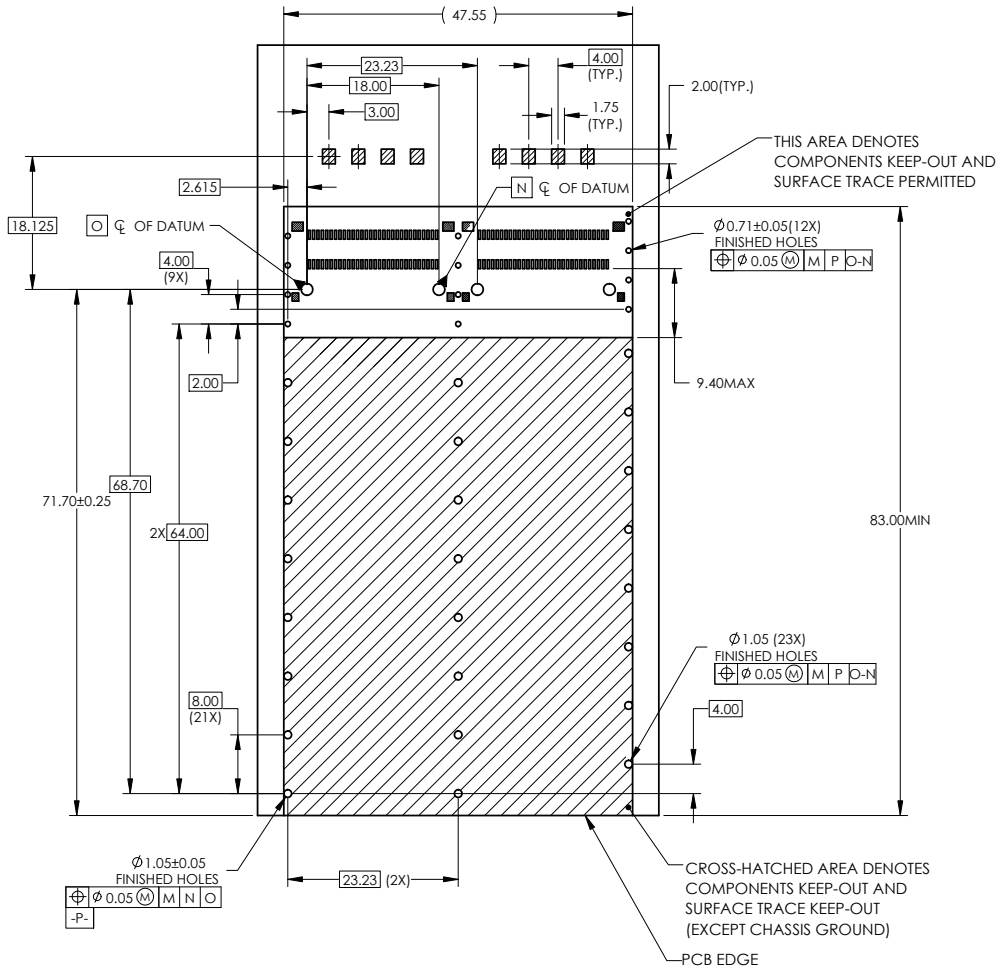
RECOMMENDED BEZE DESIGN  
 (BELLY TO BELLY CAGE MOUNTING)

DO NOT SCALE DRAWING

THIS DOCUMENT CONTAINS PROPRIETARY INFORMATION AND SUCH INFORMATION MAY NOT BE DISCLOSED TO OTHERS FOR ANY PURPOSE OR USED FOR MANUFACTURING PUPOSES WITHOUT PERMISSION FROM AMPHENOL CANADA CORP.

UNLESS OTHERWISE SPECIFIED DIMENSIONS ARE IN MILLIMETERS TOLERANCES ARE: DECIMALS: X.X ± 0.25 X.XX ± 0.15 ANGLES: ± 0.5° MATERIAL AND FINISH: SEE NOTE 1	APPROVALS	DATE	Amphenol High Speed Interconnects <small>A Division of Amphenol Corp. www.amphenol-highspeed.com</small>	
	DRAWN: Galen.L	02-MAR-20	TITLE	1X2 OSFP CAGE ASSEMBLY WITH LIGHT PIPE FORWARD STOP IMPROVEMENT
	DESIGNED:			
	CHECKED: Chigow.X	02-MAR-20	GA APPD:	
REF:	E APPD:		SIZE: A3	DWG. NO.: P-UE62-C2624-02XE1
CODE IDENT. NO.: 03554	DWG APPD: J.SI	02-MAR-20	SCALE: 1:1	PROJECT: UE62 SHEET: 4 OF 6

REVISIONS				
REV.	ECN	DESCRIPTION	DATE	APPROVED
A		PROPOSAL	02-MAR-20	J.SI



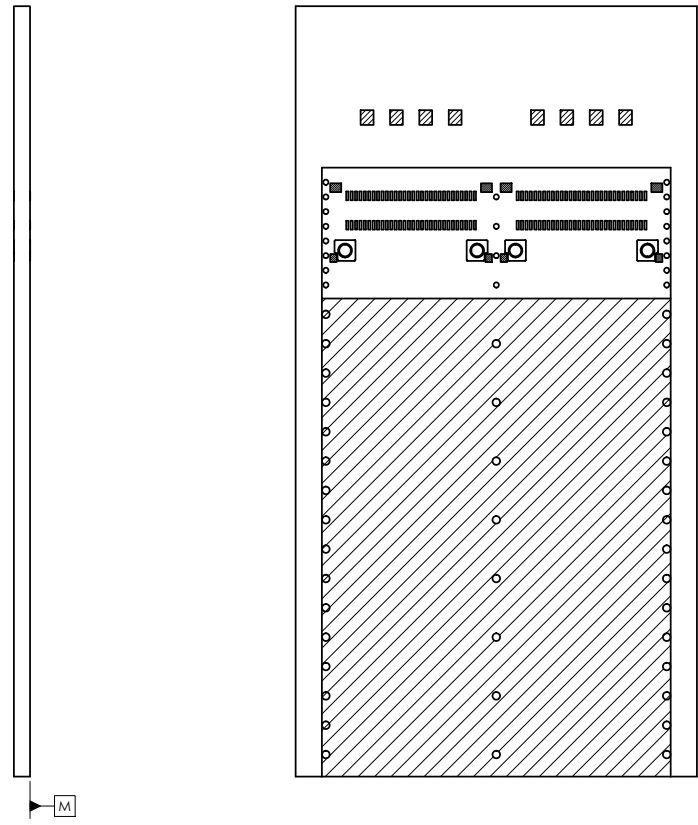
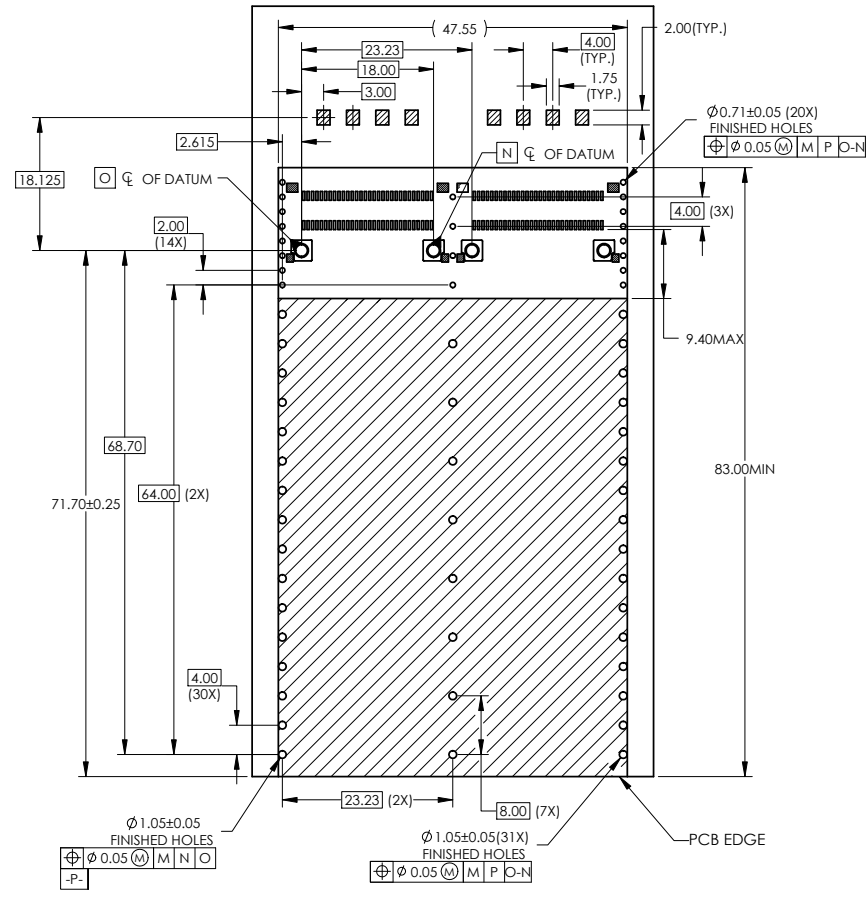
RECOMMENDED PCB DESIGN  
FOR SINGLE MOUNTING

DO NOT SCALE DRAWING

THIS DOCUMENT CONTAINS PROPRIETARY INFORMATION AND SUCH INFORMATION MAY NOT BE DISCLOSED TO OTHERS FOR ANY PURPOSE OR USED FOR MANUFACTURING PURPOSES WITHOUT PERMISSION FROM AMPHENOL CANADA CORP.

UNLESS OTHERWISE SPECIFIED DIMENSIONS ARE IN MILLIMETERS TOLERANCES ARE: DECIMALS ANGLES X.X ± 0.25 ± 0.5° X.XX ± 0.15	APPROVALS	DATE	Amphenol High Speed Interconnects A Division of Amphenol Corp. www.amphenol-highspeed.com	
	DRAWN Galen.L	02-MAR-20	TITLE	
	DESIGNED		1X2 OSFP CAGE ASSEMBLY WITH LIGHT PIPE FORWARD STOP IMPROVEMENT	
	CHECKED Chigow.X	02-MAR-20		
MATERIAL AND FINISH	QA APPD		SIZE A3	DWG. NO. P-UE62-C2624-02XE1
SEE NOTE 1			SCALE 1:1	PROJECT UE62
REF.	E APPD			REV. A
CODE IDENT. NO. 03554	DWG APPD J.SI	02-MAR-20		SHEET 5 OF 6

REVISIONS				
REV.	ECN	DESCRIPTION	DATE	APPROVED
A		PROPOSAL	02-MAR-20	J.SI



**RECOMMENDED PCB DESIGN  
FOR BELLY TO BELLY MOUNTING**

**DO NOT SCALE DRAWING**

THIS DOCUMENT CONTAINS PROPRIETARY INFORMATION AND SUCH INFORMATION MAY NOT BE DISCLOSED TO OTHERS FOR ANY PURPOSE OR USED FOR MANUFACTURING PURPOSES WITHOUT PERMISSION FROM AMPHENOL CANADA CORP.

UNLESS OTHERWISE SPECIFIED DIMENSIONS ARE IN MILLIMETERS TOLERANCES ARE:		APPROVALS		DATE		Amphenol High Speed Interconnects <small>A Division of Amphenol Corp. www.amphenol-highspeed.com</small>	
DECIMALS X.X ± 0.25 X.XX ± 0.15		DRAWN Galen.L		DESIGNED 02-MAR-20		TITLE	
ANGLES ± 0.5°		CHECKED Chigow.X		QA APPD 02-MAR-20		1X2 OSFP CAGE ASSEMBLY WITH LIGHT PIPE FORWARD STOP IMPROVEMENT	
MATERIAL AND FINISH SEE NOTE 1		E APPD		SCALE 1:1		PROJECT P-UE62-C2624-02XE1	
REF.		DWG APPD J.SI		DATE 02-MAR-20		REV. A	
CODE IDENT. NO. 03554		SCALE 1:1		PROJECT UE62		SHEET 6 OF 6	