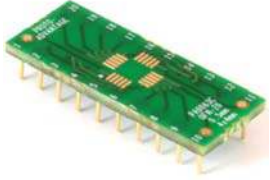


PA0063C *Proto Advantage*

Datasheet revision 1.0

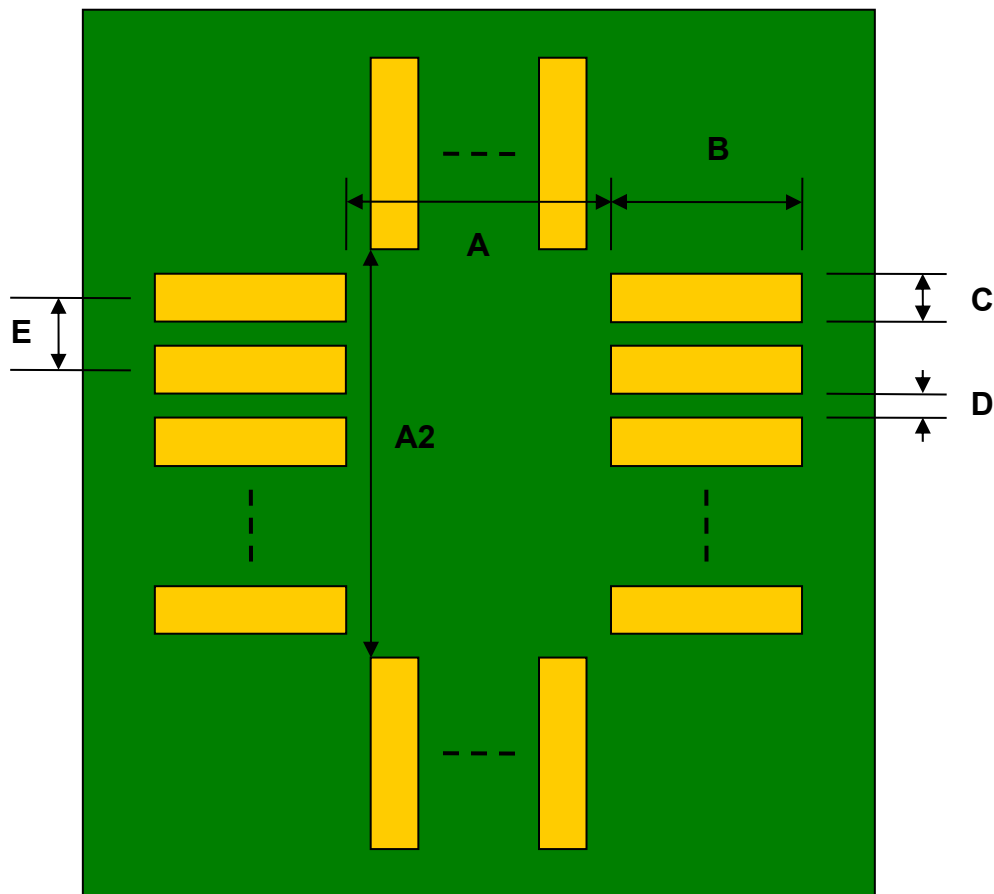
www.Proto-Advantage.com

QFN-20 to DIP-20 SMT Adapter (0.5 mm pitch, 4 x 4 mm body) *Compact Series*



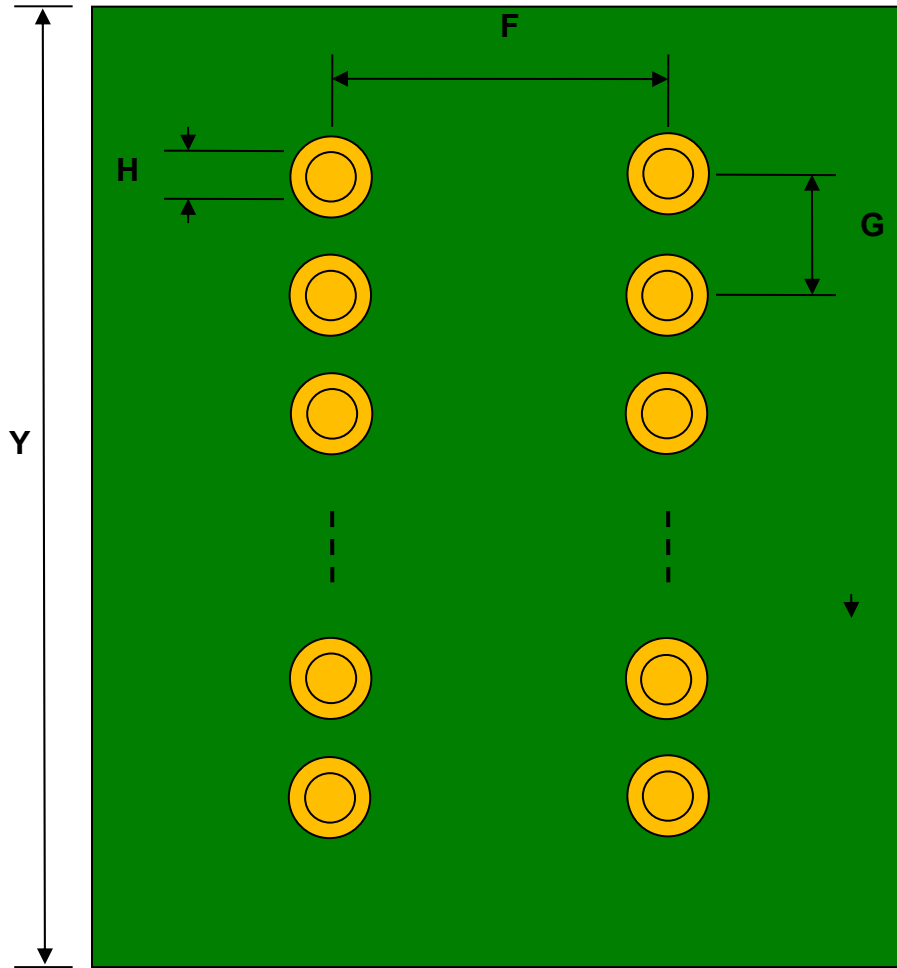
REF.	DIMENSIONS					
	mm			inches		
	MIN.	TYP.	MAX.	MIN.	TYP.	MAX.
A		3.00				
A2		3.00				
B		1.50				
C		0.30				
D		0.20				
E		0.50				
F					0.300	
G					0.100	
H		0.46				
X					0.400	
Y					1.000	

Top View (SMT Footprint)



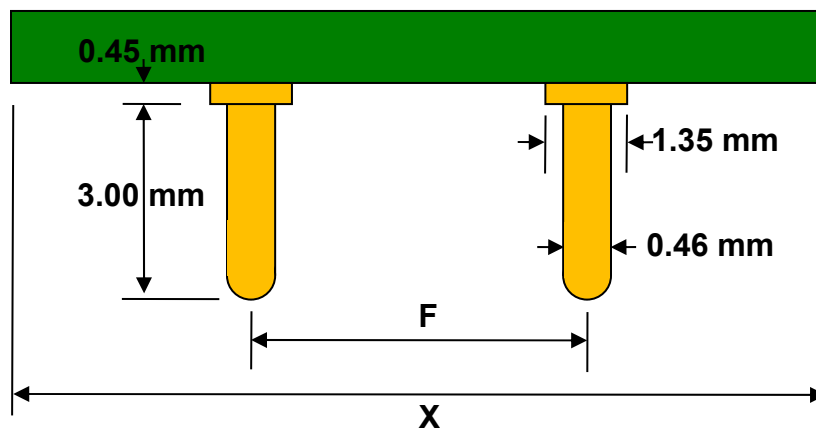
(Representative drawing only - not to scale)

Bottom View (DIP Pins)



(Representative drawing only - not to scale)

Side View (DIP Pins)



(Representative drawing only - not to scale)