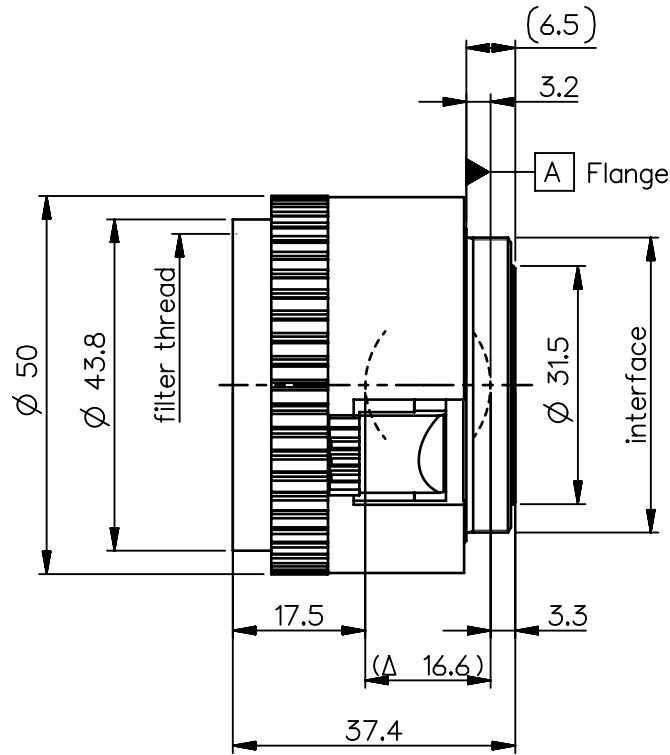
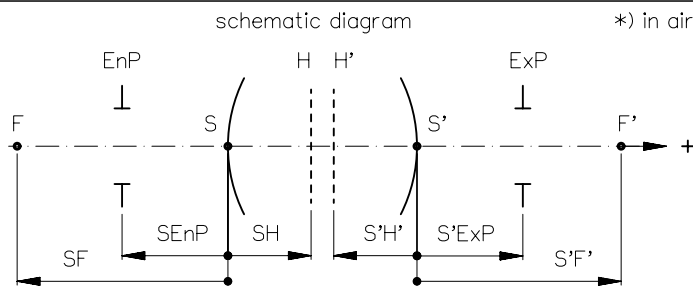


order number	lens name
0701-401-000-40	Rodagon 4/35



Specification		ON	7404-9001
image circle max. (mm)	40	working distance (mm)	184 - 1178
focal length f' (mm) *	35.1	interface	M39 x1/26" (Leica)
magnification β' [range]	-0.2 ... -0.03	filter thread	M40.5 x0.5
spectral range λ (nm)	400 - 750	weight (g)	85

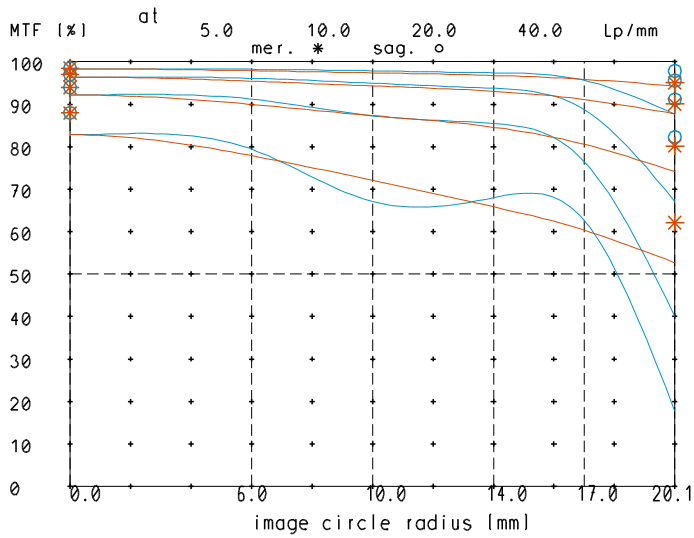


design includes CCD cover glass:		no		
SF (mm)	-26.5	f-stop	Ø EnP	Ø Exp
S'F' (mm) *	27.2	4	8.8	9.0
HH' (mm) *	0.11	5.6	6.3	6.4
SH (mm)	8.6	8	4.4	4.5
S'H' (mm) *	-7.9	11	3.2	3.3
SEnP (mm)	7.7	16	2.2	2.3
S'Exp (mm) *	-8.8			

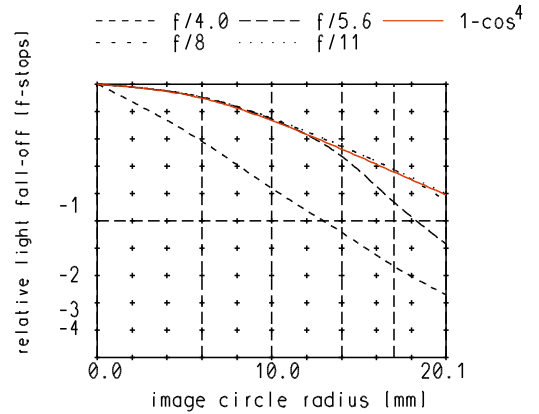
NX PROTECTIVE NOTE "DIN ISO 16016" TO BE OBSERVED	EU-D	AL-T1A	US-D	US-ML	not export controlled	
	REV	ECC	DATE	APPROVED	PDM Status	
	a	Neuausg	08.06.15	K-Jancec	Freigabe	Q Internal Use
					SCALE 1:1	
			GENERAL TOLERANCE OF DIMENSION, FORM, POS. ISO 2768-mH	MATERIAL		
			BASIC TOLERANCING PRINCIPLE ISO 8015	TITLE		
			FIRST ISSUE	Rodagon 4/35		
			DATE			
			NAME			
			ISSUE	08.06.15 K-Jancec		
			CHKD	08.06.15 Stauder		
				DRAWING NO.	SHEET 1	
DIN A 4	ALL DIMENSIONS ARE IN MM AND INCLUDE SURFACE TREATMENT			0701-401-100-40-0001a	OF 1	
				REPLACES		

Rodagon_4/35

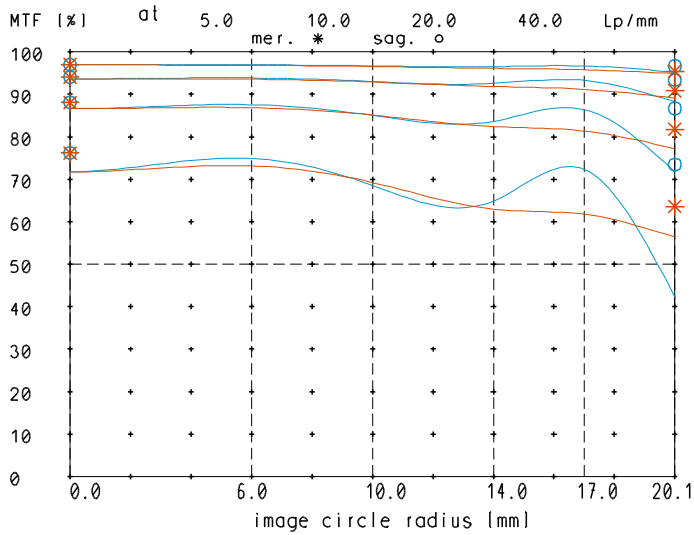
MTF at ratio -0.05 f/ 4.0



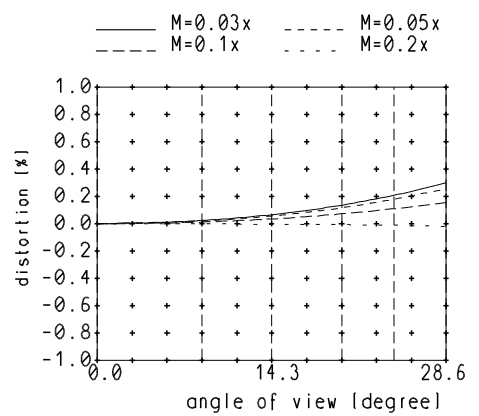
relative light fall-off at ratio -0.05



MTF at ratio -0.05 f/ 8

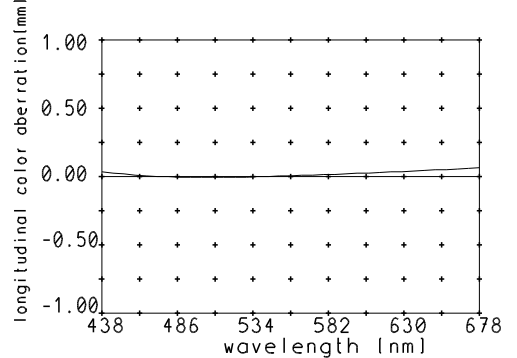


Distortion at ratio 0.03x to 0.2x



— sagittal. o Diffraction limited value
 — meridional * Diffraction limited value

Longitudinal color aberration at ratio -0.05



Named frequencies (line pairs/mm) in modular transfer function (MTF) as well as diagrams of relative light fall-off, distortion and longitudinal color aberration refer to film plane.