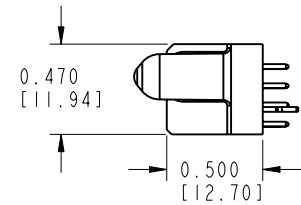
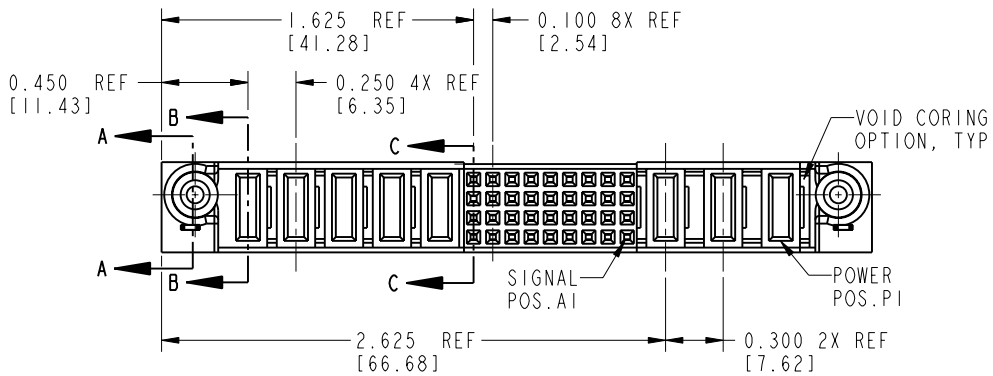
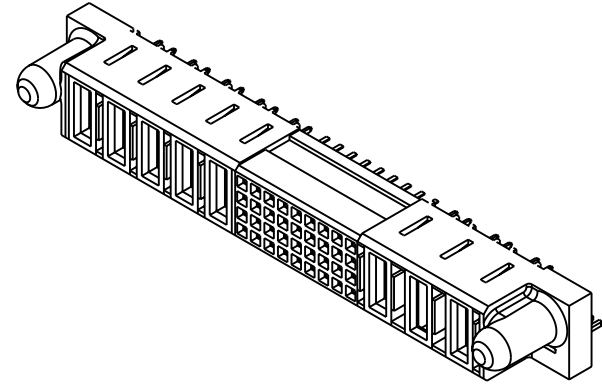
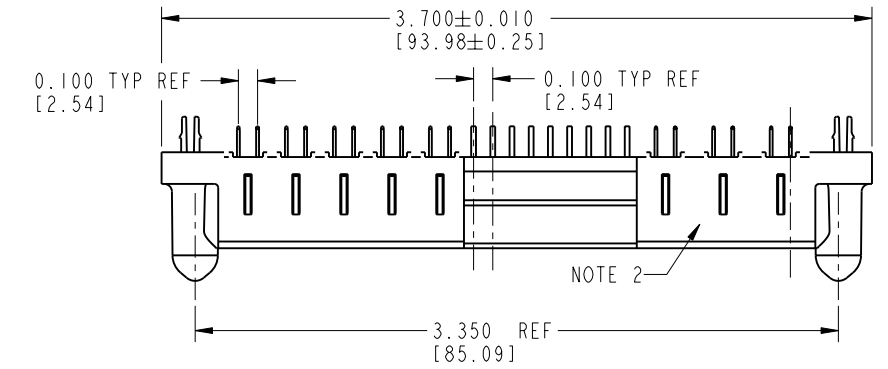


Tous droits strictement réservés. Reproduction ou communication o des liers interdite sous quelque forme que ce soit sans autorisation écrite du propriétaire. Propriété de c FCI. Droits de reproduction FCI.

All rights strictly reserved. Reproduction or issue to third parties in any form, whatever is not permitted without written authority from the proprietor. Property of FCI. Copyright FCI.

PRODUCT NUMBER  
51673-001--  
NOTE: 3



mat'l code		NOTE 1		tolerances unless otherwise specified		CUSTOMER		 www.fciconnect.com			
lfr	ecn no.	dr	date	linear	.XX±.01/0.X±0.3	COPY					
A	V02392	JRW	10-09-00		.XXX±.005/0.XX±0.13	projection		title 3ACP + 36S + 5P VERTICAL SOLDER RECEPTACLE			
B	DG05-0375	GuoJM	10/07/05	angles	.XXX±.0020/.XXX±.051						
				dr	C. BAROT 12-09-99	INCH/MM		product family	PWRBLADE	code	213
				engr	J. BROWN 12-09-99	scale		size	dwg no	sheet	1 of 3
				chr	J. BROWN 12-09-99	1:1		A	51673		
				appd	J. BROWN 12-09-99						
sheet index	revision sheet	B	B	B							
		1	2	3							

Pro/E

cage code 22526

PDM: Rev:B

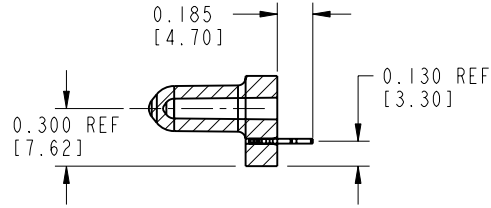
STATUS: Released

Printed: Dec 20, 2010

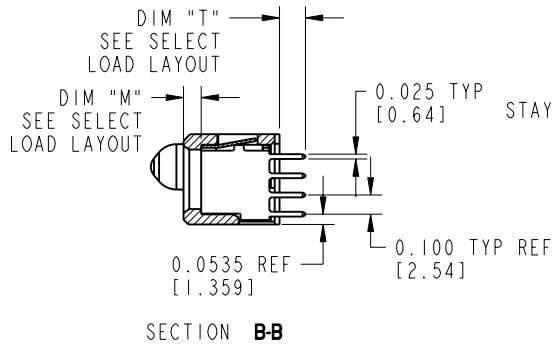
Tous droits strictement réservés. Reproduction ou communication o des liers interdite sous quelque forme que ce soit sans autorisation écrite du propriétaire. Propriété de c FCI. Droits de reproduction FCI.

All rights strictly reserved. Reproduction or issue to third parties in any form, whatever is not permitted without written authority from the proprietor. Property of FCI. Copyright FCI.

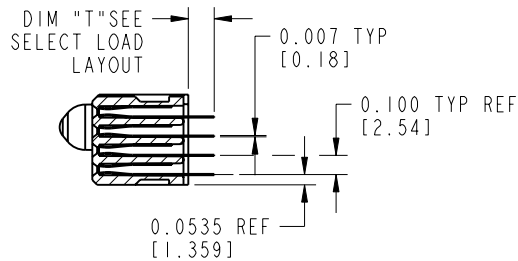
PRODUCT NUMBER  
51673-001--  
NOTE: 3



SECTION A-A

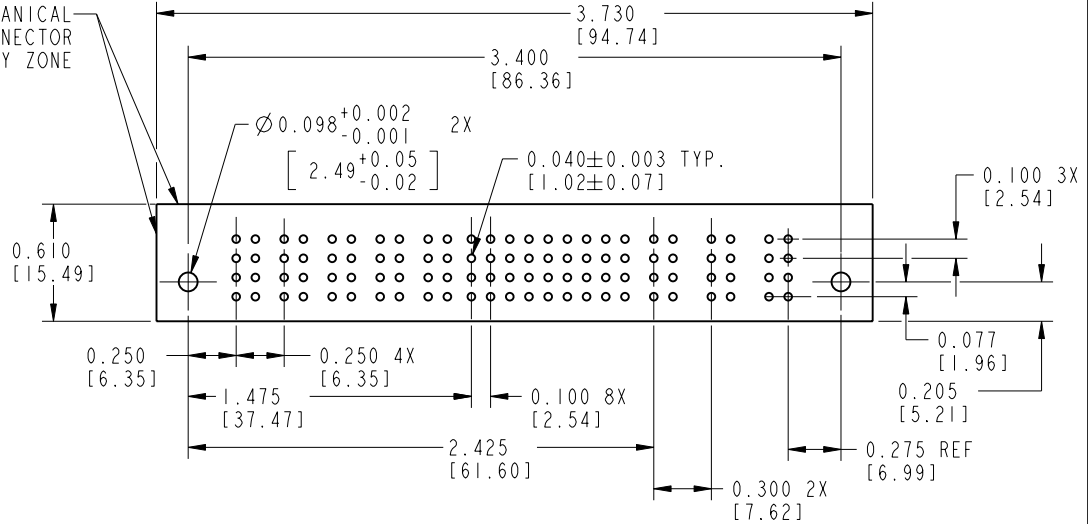


SECTION B-B



SECTION C-C

MECHANICAL CONNECTOR STAY-AWAY ZONE



RECOMMENDED PCB LAYOUT

mat'l code				tolerances unless otherwise specified		CUSTOMER	<b>FCI</b> www.fciconnect.com	
lfr	ecn no.	dr	date	linear	.XX±.01/0.X±0.3	COPY	title	3ACP + 36S + 5P
B				linear	.XXX±.005/0.XX±0.13	projection	VERTICAL SOLDER RECEPTACLE	
				angles	.XXX±.0020/.XXX±.051		product family	PWRBLADE
				dr	C. BAROT 12-09-99	INCH/MM	size	dwg no
				engr	J. BROWN 12-09-99	scale	A	51673
				chr	J. BROWN 12-09-99	1:1	code	213
				appd	J. BROWN 12-09-99		sheet	2
sheet index	revision sheet							

Pro/E

cage code 22526

PDM: Rev:B

STATUS: Released

Printed: Dec 20, 2010

Tous droits strictement réservés. Reproduction ou communication o des liens interdite sous quelque forme que ce soit sans autorisation écrite du propriétaire. Propriété de c FCI. Droits de reproduction FCI.

All rights strictly reserved. Reproduction or issue to third parties in any form, whatever is not permitted without written authority from the proprietor. Property of FCI. Copyright FCI.

PRODUCT No.	ROWS	POWER					SIGNAL									POWER			ITEM NO.	QTY	DIM "M" MATING LENGTH ±.010 [0.25]	DIM "T" TAIL LENGTH ±.010 [0.25]	CONTACT TYPE	PLATING FOR MATING	PLATING FOR TAIL		
		E2	P8	P7	P6	P5	P4	9	8	7	6	5	4	3	2	1	P3	P2								P1	E1
51673-001-- NOTE: 3	D C B A	HA	PD	PD	PD	PD	PD	EEEEEEEEEEEE	EEEEEEEEEEEE	EEEEEEEEEEEE	EEEEEEEEEEEE	EEEEEEEEEEEE	EEEEEEEEEEEE	EEEEEEEEEEEE	EEEEEEEEEEEE	EEEEEEEEEEEE	PD	PA	PD	HA	E	36	N/A [N/A]	0.135 [3.43]	SIGNAL	30 u'' [.76um] Au	SnPb
																					PD	7	0.092 [2.34]	0.135 [3.43]	POWER	30 u'' [.76um] Au	SnPb
																					PA	1	0.042 [1.07]	0.135 [3.43]	POWER	30 u'' [.76um] Au	SnPb
																					HA	2	N/A [N/A]	N/A [N/A]	HOLD-DOWN	N/A [N/A]	SnPb

CONNECTORS - NOTES:

1. HOUSING MATERIAL: GLASS FILLED HIGH TEMP.THERMOPLASTIC FLAME RETARDANT PER UL94 V-0.  
SIGNAL PIN MATERIAL: COPPER ALLOY  
POWER CONTACT MATERIAL: COPPER ALLOY

2. "MANUFACTURER" NAME, P/N, AND DATE CODE TO APPEAR ON THIS SURFACE

3. PLATING:  
51673-001 Singal Pin:30u"/0.76um Au OVER 50u"/1.27um Ni ON }THE CONTACT AREA,  
AND 100u"/2.54um SnPb PLATING OVER 50u"/1.27um Ni ON THE TERMINATION SECTION.  
Power Pin:30u"/0.76um Au OVER 50u"/1.27um Ni ON THE CONTACT AREA,  
AND 100u"/2.54um SnPb PLATING OVER 50u"/1.27um Ni ON THE TERMINATION SECTION.

51673-001LF Singal Pin:30u"/0.76um Au OVER 50u"/1.27um Ni ON }THE CONTACT AREA,  
AND 78u"/2.00um Sn PLATING OVER 50u"/1.27um Ni ON THE TERMINATION SECTION.  
Power Pin:30u"/0.76um Au OVER 50u"/1.27um Ni ON THE CONTACT AREA,  
AND 78u"/2.00um Sn PLATING OVER 50u"/1.27um Ni ON THE TERMINATION SECTION.

PART NUMBER 51673-001LF MEETS EUROPEAN UNION DIRECTIVE AND }OTHER COUNTRY REGULATIONS AS DESCRIBED IN GS-22-008.

THE HOUSING WILL WITHSTAND EXPOSURE TO 260° PEAK TEMPERATURE FOR 10 SECONDS IN A WAVE SOLDER APPLICATION WITH A CIRCUIT BOARD.

PCB - NOTES:

- ALL DIMENSIONS ARE BASIC UNLESS OTHERWISE SPECIFIED.
- ALL THROUGH HOLES ARE LOCATED WITH A TRUE POSITION OF .004
- ALL HOLE DIAMETERS ARE FINISHED HOLE SIZE
- Ø0.098 THROUGH HOLES ARE UNPLATED
- Ø.0453/1.151 DRILLED HOLES PLATED WITH .0003/.007 MIN SnPb OVER .001/1.03 to .003/.08 Cu PLATING TO ACHIEVE A .080±.003/1.02±.08 HOLE

mat'l code				tolerances unless otherwise specified				CUSTOMER		<b>FCI</b> www.fciconnect.com			
lfr	ecr no.	dr	date	linear	.XX±.01/0.X±0.3			projection	COPY		title		
B					.XXX±.005/0.XX±0.13				INCH/MM		3ACP + 36S + 5P VERTICAL SOLDER RECEPTACLE		
					.XXX±.0020/.XXX±.051				scale		product family		
				angles	0°±2°			1:1		PWRBLADE			
				dr	C. BAROT	12-09-99		A		code			
				engr	J. BROWN	12-09-99				213			
				chr	J. BROWN	12-09-99				sheet			
				oppd	J. BROWN	12-09-99				3			
sheet index	revision sheet												

1 | 2

Pro/E

3 |

coge code 22526

4